

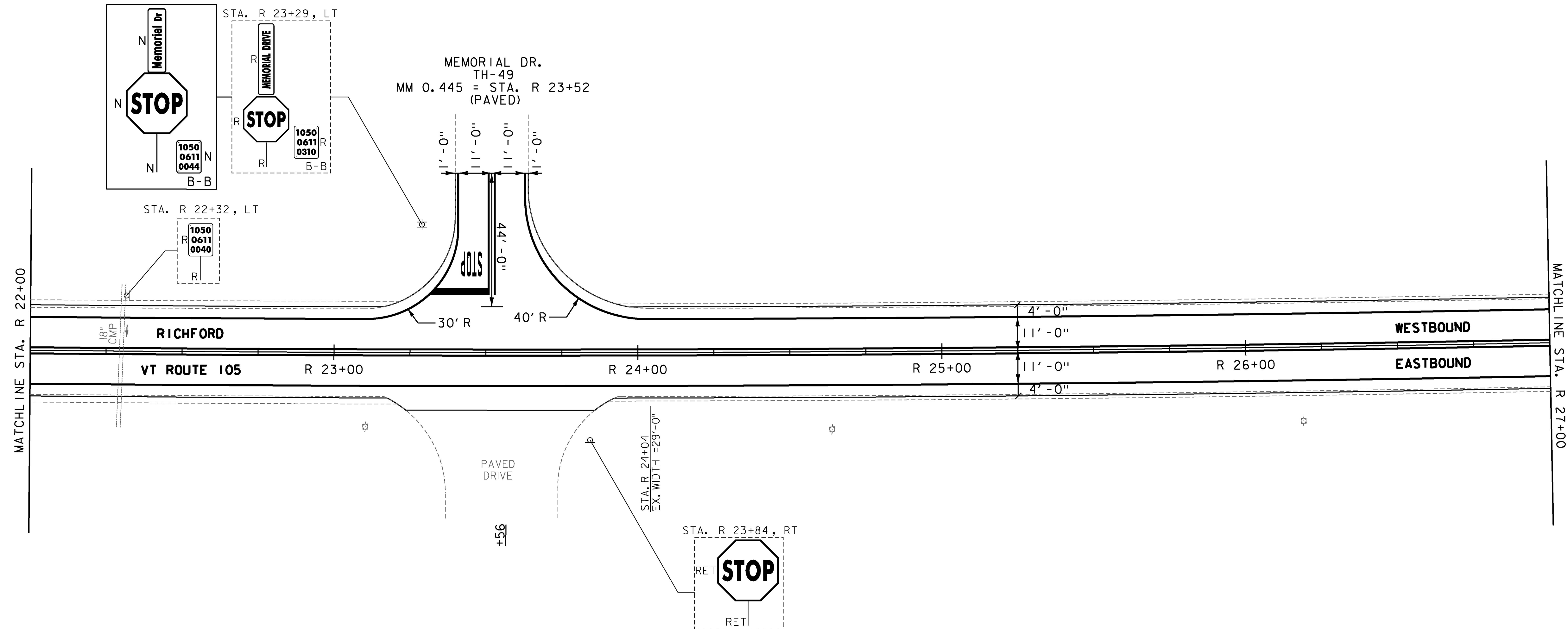
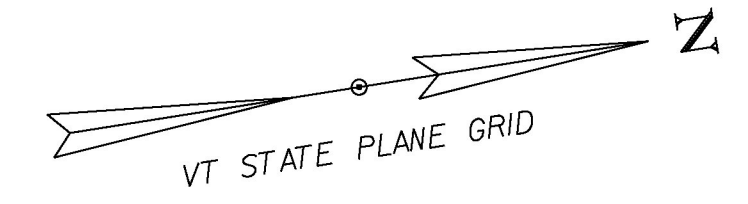
MILLED RUMBLE STRIPS (CENTERLINE)
 STA. R 22+00 TO R 23+32, CL
 STA. R 23+72 TO R 27+00, CL

DURABLE 4 INCH WHITE LINE, (OPTION CC BID ITEMS)
 TEMPORARY 4 INCH WHITE LINE, PAINT
 (ALL LINES WILL INCLUDE EDGE LINE BREAKS
 AND RADII FOR SIDE ROADS)
 STA. R 22+00 TO R 27+00, SOLID LT & RT
 STA. R 23+52, SOLID LT (EDGE LINES, MEMORIAL DR. TH-49)

DURABLE 24 INCH STOP BAR, (OPTION FF BID ITEMS)
 TEMPORARY 24 INCH STOP BAR, PAINT
 STA. R 23+52, LT (MEMORIAL DR. TH-49)

DURABLE LETTER OR SYMBOL, (OPTION GG BID ITEMS)
 TEMPORARY LETTER OR SYMBOL, PAINT
 STA. R 23+52, LT "STOP" (MEMORIAL DR. TH-49)

REMOVING SIGNS
 AS SHOWN - 4



NOTES:

1. FOR LEGENDS, SEE SHEETS 3 & 3I.
2. ALL EXISTING SIGNS NOT SHOWN ON THE PLANS SHALL BE RETAINED.
3. ALL UTILITY LOCATIONS SHOWN ARE APPROXIMATE AND SHOULD BE VERIFIED PRIOR TO ANY WORK COMMENCING.



PROJECT NAME:	ENOSBURGH-RICHFORD
PROJECT NUMBER:	STP 2969(I)
FILE NAME:	z16vi04bdr.dgn
PROJECT LEADER:	G. EDWARDS
DESIGNED BY:	G. BURGMEIER
PLAN SHEET 84	
PLOT DATE:	4/2/2018
DRAWN BY:	G. BURGMEIER
CHECKED BY:	J. LITTLE
SHEET 114	OF 222

