

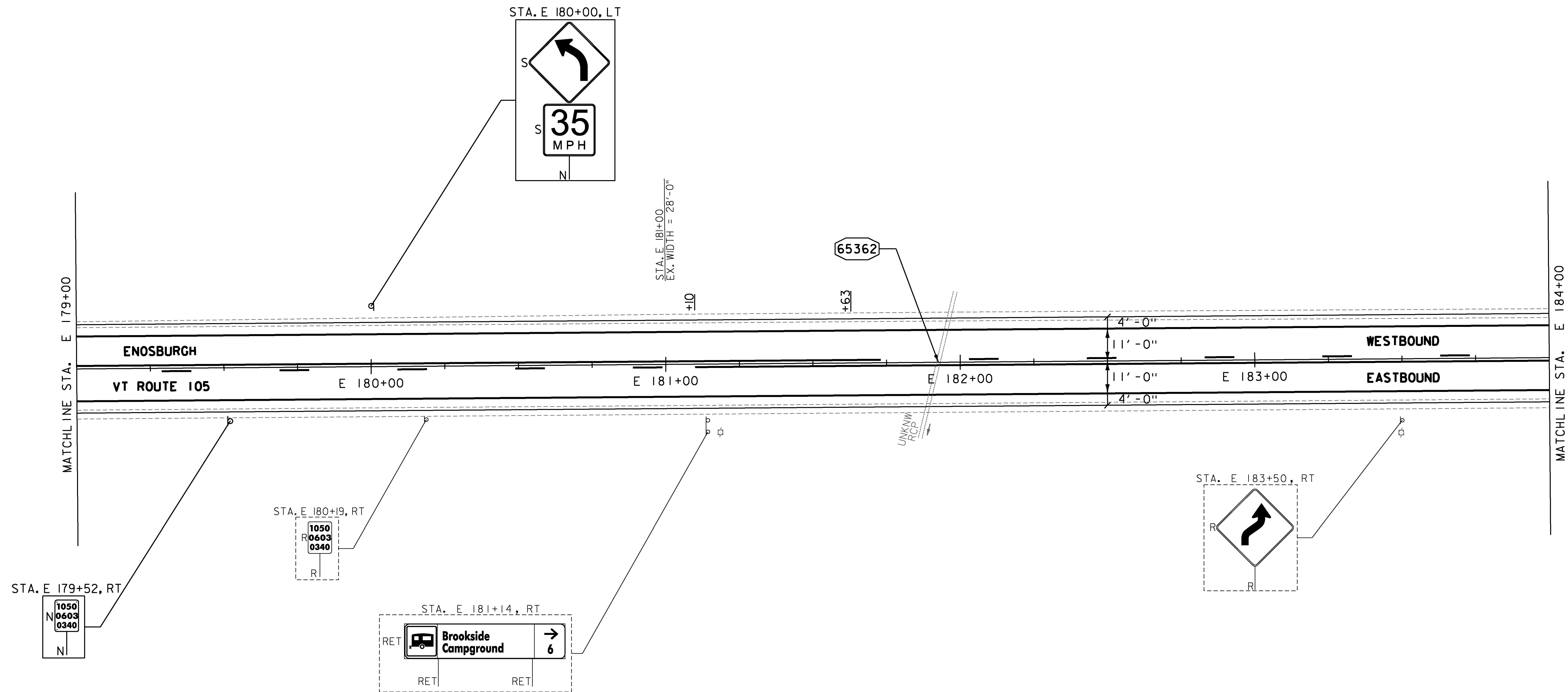
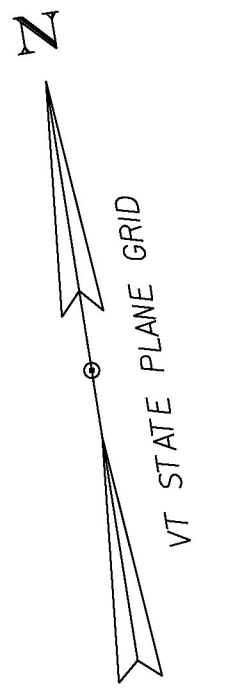
MILLED RUMBLE STRIPS (CENTERLINE)
STA. E 179+00 TO E 184+00, CL

DURABLE 4 INCH WHITE LINE, (OPTION CC BID ITEMS)
TEMPORARY 4 INCH WHITE LINE, PAINT
(ALL LINES WILL INCLUDE EDGE LINE BREAKS
AND RADII FOR SIDE ROADS)
STA. E 179+00 TO E 184+00, SOLID LT & RT

DURABLE 4 INCH YELLOW LINE, (OPTION DD BID ITEMS)
TEMPORARY 4 INCH YELLOW LINE, PAINT
(ALL LINES WILL INCLUDE ϕ BREAKS FOR SIDE ROADS)
STA. E 179+00 TO E 181+10, SOLID LT, DASHED RT
STA. E 181+10 TO E 181+63, SOLID LT & RT
STA. E 181+63 TO E 184+00, DASHED LT, SOLID RT

REMOVING SIGNS
AS SHOWN - 2

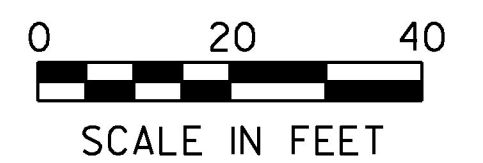
ERECTING SALVAGED SIGNS
AS SHOWN - 2



NOTES:

1. FOR LEGENDS, SEE SHEETS 3 & 3I.
2. ALL EXISTING SIGNS NOT SHOWN ON THE PLANS SHALL BE RETAINED.
3. ALL UTILITY LOCATIONS SHOWN ARE APPROXIMATE AND SHOULD BE VERIFIED PRIOR TO ANY WORK COMMENCING.
4. SEE SHEET 29 FOR CULVERT INFORMATION.

65362 CLEANING CULV. PIPE, IN-PLACE (0 TO 24 IN., INCL.)
STA. E 181+93, 51LF



PROJECT NAME:	ENOSBURGH-RICHFORD
PROJECT NUMBER:	STP 2969(I)
FILE NAME:	z16vi04bdr.dgn
PROJECT LEADER:	G. EDWARDS
DESIGNED BY:	G. BURGMEIER
PLAN SHEET 21	
PLOT DATE:	4/2/2018
DRAWN BY:	G. BURGMEIER
CHECKED BY:	J. LITTLE
SHEET	51 OF 222

