

MILLED RUMBLE STRIPS (CENTERLINE)
STA. E 174+00 TO E 179+00, CL

STONE FILL, TYPE I
SLOPE EROSION PREVENTION WITH GUARDRAIL:
STA. E 175+42 TO E 176+80, RT
STA. E 175+90 TO E 176+90, LT
(SEE SHEET 19)

STEEL BEAM GUARDRAIL, GALVANIZED
STA. E 175+90.0 TO E 176+90.0, LT

ANCHOR FOR STEEL BEAM RAIL
STA. E 175+42.5, RT
STA. E 175+90.0, LT
STA. E 176+80.0, RT
STA. E 176+90.0, LT

REMOVAL AND DISPOSAL OF GUARDRAIL
STA. E 175+42.5 TO E 176+80.0, RT
STA. E 175+90.0 TO E 176+90.0, LT

ALTERNATES ZAI & ZA2 BID ITEMS
S.P. (GREGORY MINI SPACER G.R.)(GMS)
S.P. (NON-BLOCKED MIDWEST G.R. SYSTEM)(MGS)
STA. E 175+42.5 TO E 176+80.0, RT

DURABLE 4 INCH WHITE LINE, (OPTION CC BID ITEMS)
TEMPORARY 4 INCH WHITE LINE, PAINT
(ALL LINES WILL INCLUDE EDGE LINE BREAKS
AND RADII FOR SIDE ROADS)
STA. E 174+00 TO E 179+00, SOLID LT & RT

DURABLE 4 INCH YELLOW LINE, (OPTION DD BID ITEMS)
(ALL LINES WILL INCLUDE C BREAKS FOR SIDE ROADS)
STA. E 174+00 TO E 174+77, SOLID LT & RT
STA. E 174+77 TO E 179+00, SOLID LT, DASHED RT
STA. E 175+03 TO E 175+13, RT (RAIL TRAIL CENTERLINE)
STA. E 175+61 TO E 175+68, LT (RAIL TRAIL CENTERLINE)

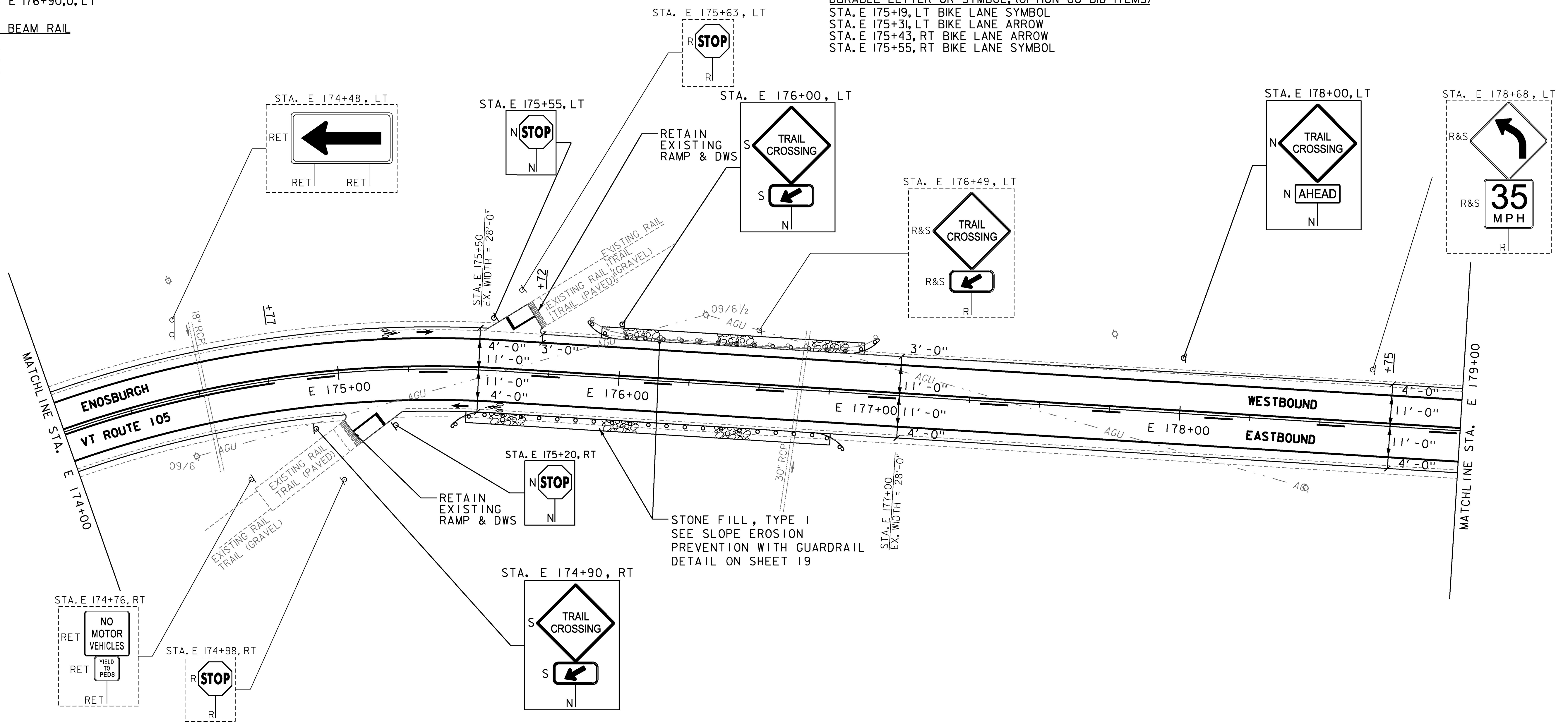
TEMPORARY 4 INCH YELLOW LINE, PAINT
(ALL LINES WILL INCLUDE C BREAKS FOR SIDE ROADS)
STA. E 174+00 TO E 174+77, SOLID LT & RT
STA. E 174+77 TO E 179+00, SOLID LT, DASHED RT

REMOVING SIGNS
AS SHOWN - 6

ERECTING SALVAGED SIGNS
AS SHOWN - 4

DURABLE 12 INCH WHITE LINE, (OPTION EE BID ITEMS)
STA. E 175+13 TO E 175+16, RT (RAIL TRAIL STOP BAR)
STA. E 175+58 TO E 175+61, LT (RAIL TRAIL STOP BAR)

DURABLE LETTER OR SYMBOL, (OPTION GG BID ITEMS)
STA. E 175+19, LT BIKE LANE SYMBOL
STA. E 175+31, LT BIKE LANE ARROW
STA. E 175+43, RT BIKE LANE ARROW
STA. E 175+55, RT BIKE LANE SYMBOL



- NOTES:
- FOR LEGENDS, SEE SHEETS 3 & 3I.
 - ALL EXISTING SIGNS NOT SHOWN ON THE PLANS SHALL BE RETAINED.
 - ALL UTILITY LOCATIONS SHOWN ARE APPROXIMATE AND SHOULD BE VERIFIED PRIOR TO ANY WORK COMMENCING.
 - SEE SHEETS 11 & 21 FOR RAIL TRAIL PAVEMENT MARKING & PAVEMENT HANDWORK DETAILS.



PROJECT NAME:	ENOSBURGH-RICHFORD
PROJECT NUMBER:	STP 2969(1)
FILE NAME:	z16vi04bdr.dgn
PROJECT LEADER:	G. EDWARDS
DESIGNED BY:	G. BURGMEIER
PLAN SHEET 20	
PLOT DATE:	4/2/2018
DRAWN BY:	G. BURGMEIER
CHECKED BY:	J. LITTLE
SHEET 50 OF 222	

