

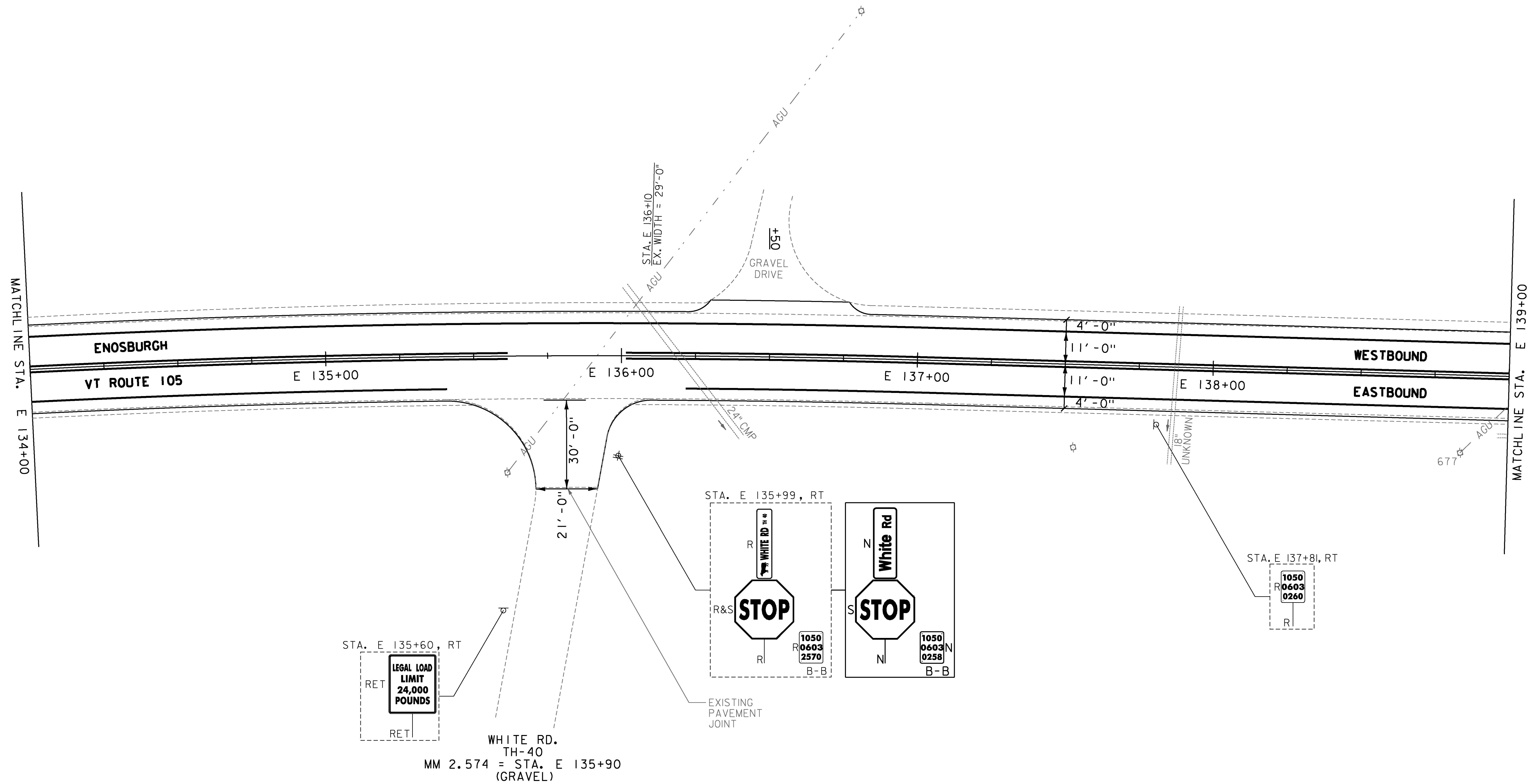
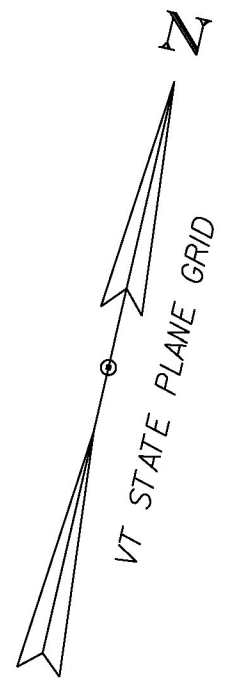
MILLED RUMBLE STRIPS (CENTERLINE)  
 STA. E 134+00 TO E 135+61, CL  
 STA. E 136+01 TO E 139+00, CL

DURABLE 4 INCH WHITE LINE, (OPTION CC BID ITEMS)  
 TEMPORARY 4 INCH WHITE LINE, PAINT  
 (ALL LINES WILL INCLUDE EDGE LINE BREAKS  
 AND RADII FOR SIDE ROADS)  
 STA. E 134+00 TO E 139+00, SOLID LT & RT

DURABLE 4 INCH YELLOW LINE, (OPTION DD BID ITEMS)  
 TEMPORARY 4 INCH YELLOW LINE, PAINT  
 (ALL LINES WILL INCLUDE  $\phi$  BREAKS FOR SIDE ROADS)  
 STA. E 134+00 TO E 135+61, SOLID LT & RT  
 STA. E 136+01 TO E 139+00, SOLID LT & RT

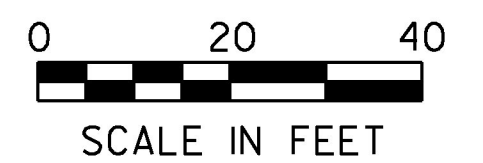
REMOVING SIGNS  
 AS SHOWN - 4

ERECTING SALVAGED SIGNS  
 AS SHOWN - 1



NOTES:

1. FOR LEGENDS, SEE SHEETS 3 & 3I.
2. ALL EXISTING SIGNS NOT SHOWN ON THE PLANS SHALL BE RETAINED.
3. ALL UTILITY LOCATIONS SHOWN ARE APPROXIMATE AND SHOULD BE VERIFIED PRIOR TO ANY WORK COMMENCING.



PROJECT NAME:	ENOSBURGH-RICHFORD
PROJECT NUMBER:	STP 2969(I)
FILE NAME:	z16vi04bdr.dgn
PROJECT LEADER:	G. EDWARDS
DESIGNED BY:	G. BURGMEIER
PLAN SHEET 12	
PLOT DATE:	4/2/2018
DRAWN BY:	G. BURGMEIER
CHECKED BY:	J. LITTLE
SHEET	42 OF 222

