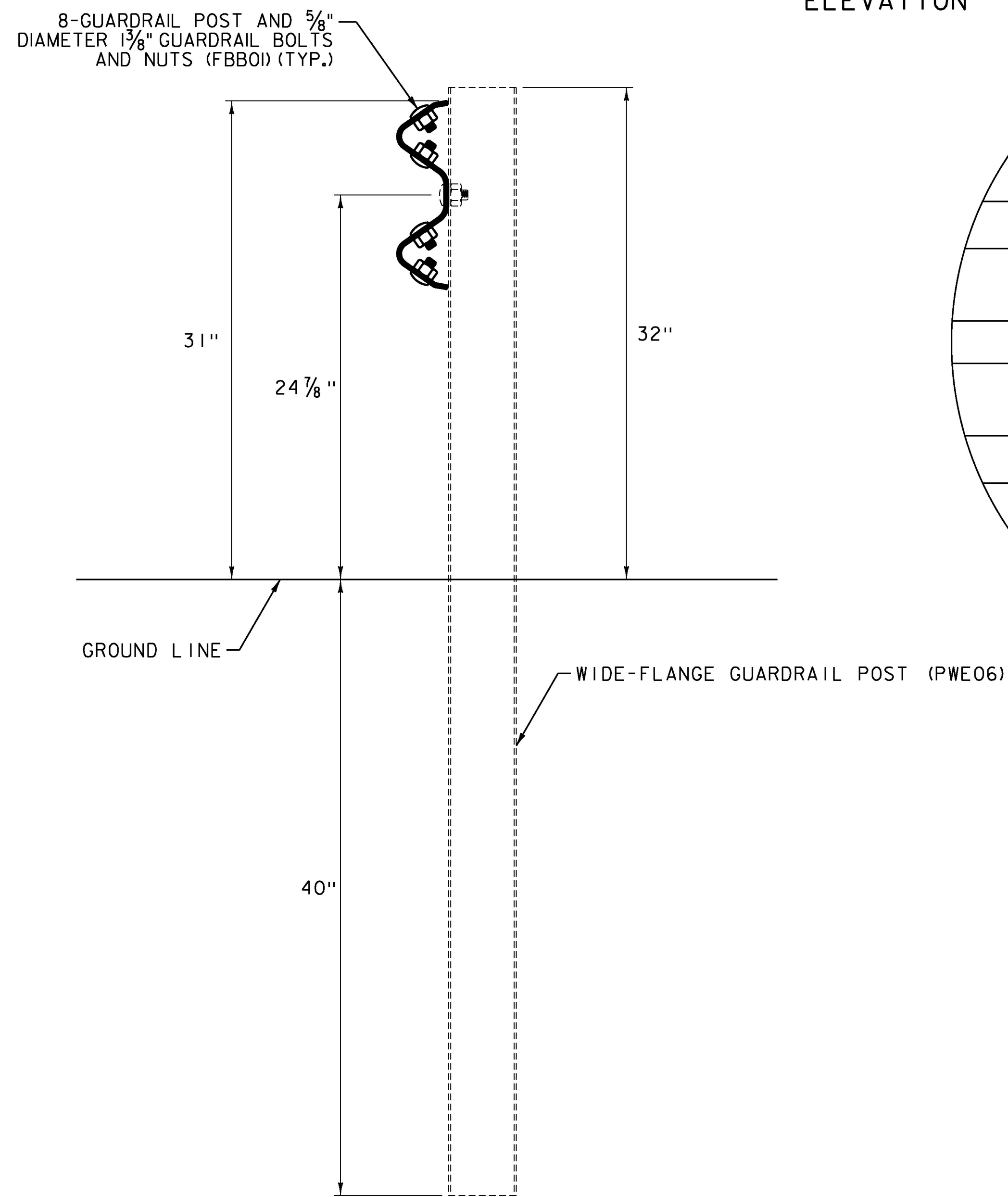
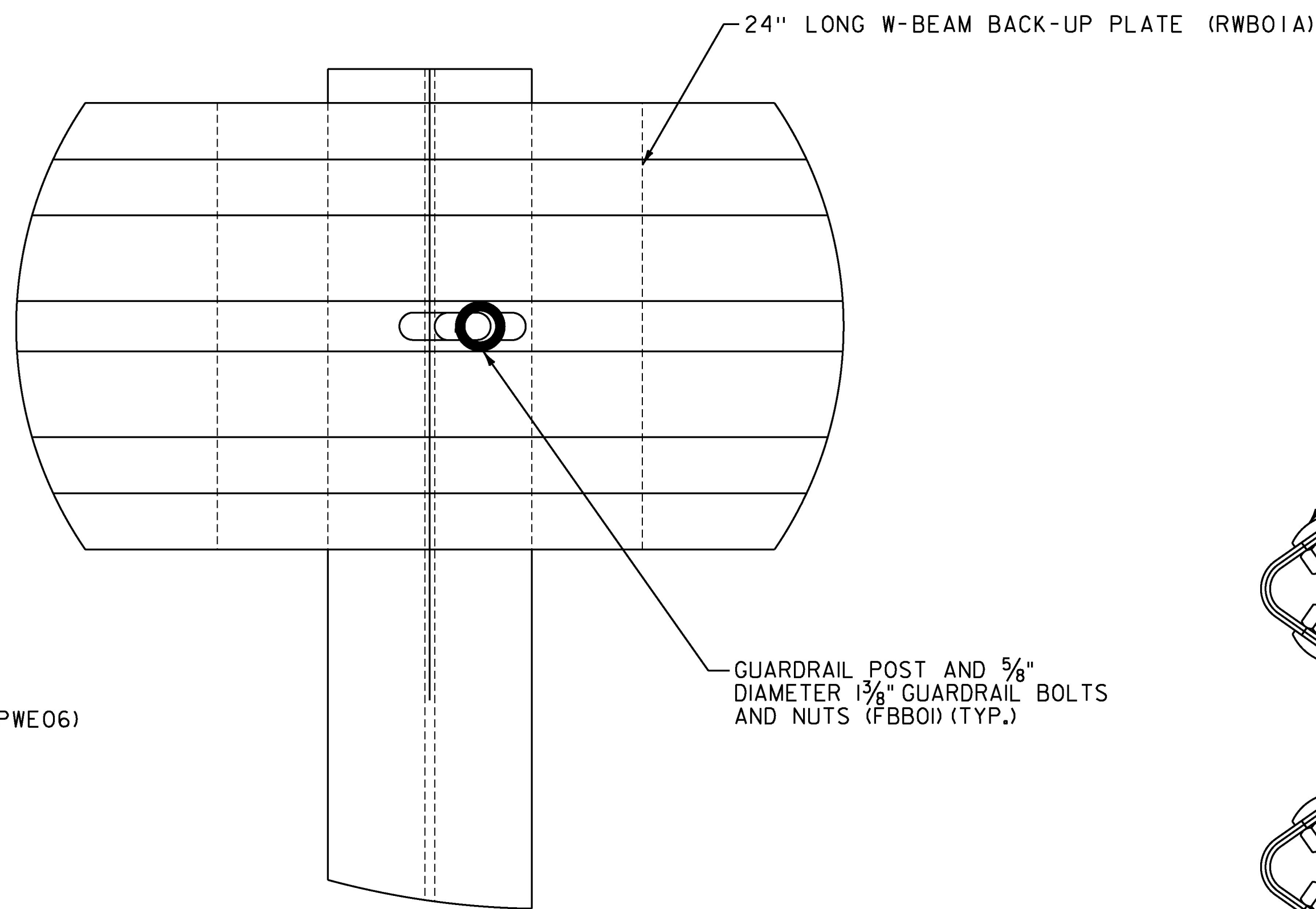


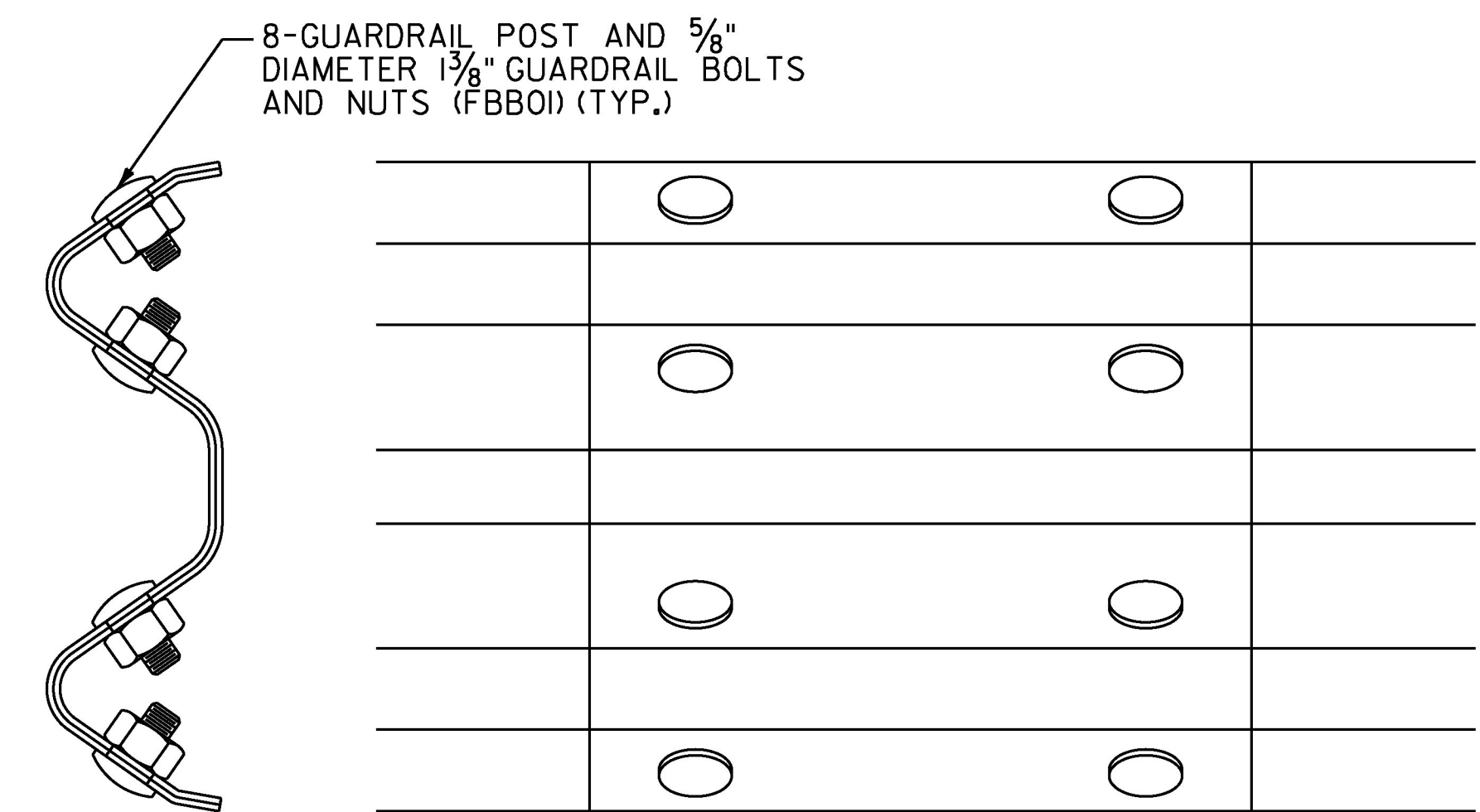
ELEVATION



SECTION A-A



POST DETAIL



SPLICE DETAIL

NOTES:

- SEE THE FEDERAL HIGHWAY DIVISION'S LETTER DATED SEPTEMBER 6, 2013 CONFIRMING ELIGIBILITY OF THE 31-INCH NON-BLOCKED MIDWEST GUARDRAIL SYSTEM (MGS) UNDER THE FEDERAL-AID HIGHWAY PROGRAM, AS OUTLINED IN THE SPECIAL PROVISIONS.
- FOR LOCATIONS, SEE ITEM DETAIL SUMMARY SHEETS (SHEETS 26-27)

NOT TO SCALE

PROJECT NAME: ENOSBURGH-RICHFORD  
PROJECT NUMBER: STP 2969(I)

FILE NAME: z16vi04detail.dgn  
PROJECT LEADER: G. EDWARDS  
DESIGNED BY: D. BARNES  
GUARDRAIL DETAIL SHEET 4

PLOT DATE: 4/2/2018  
DRAWN BY: D. BARNES  
CHECKED BY: J. LITTLE  
SHEET 16 OF 222

