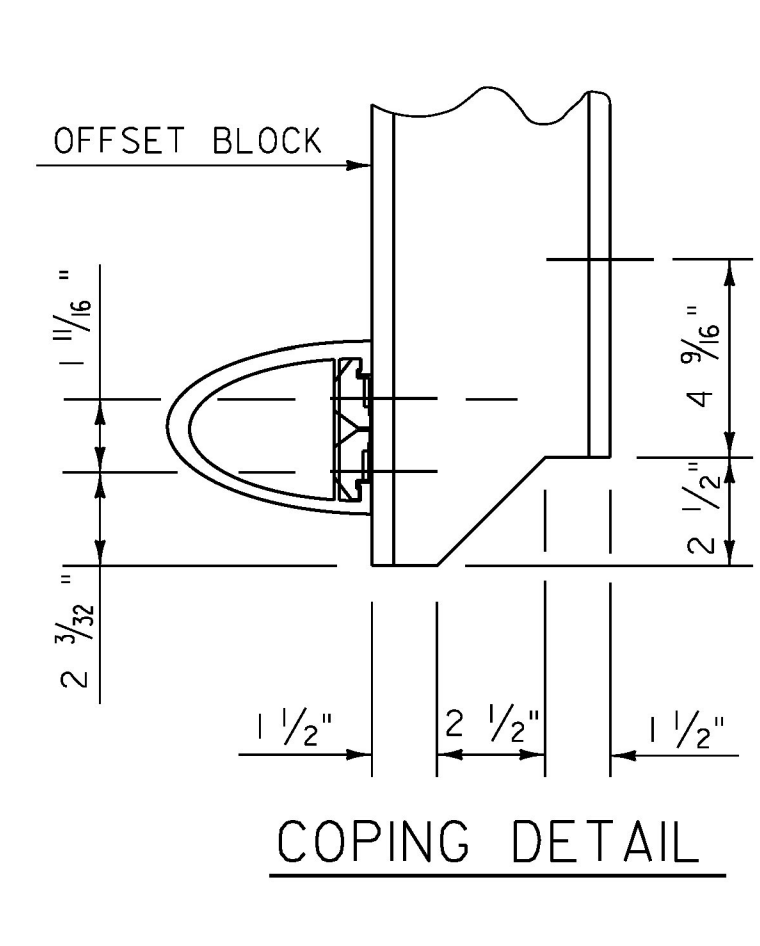
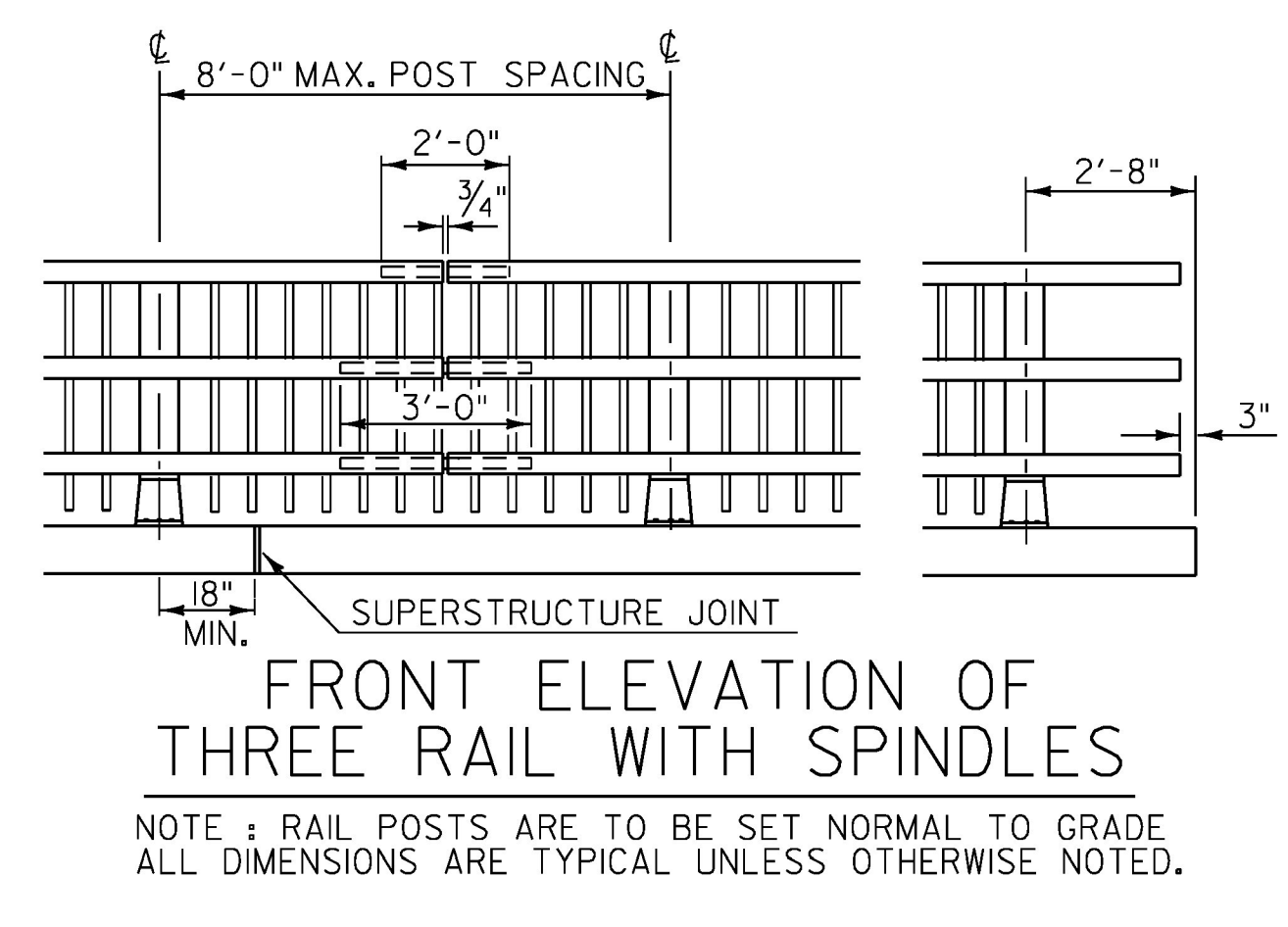


POST SIDE VIEW

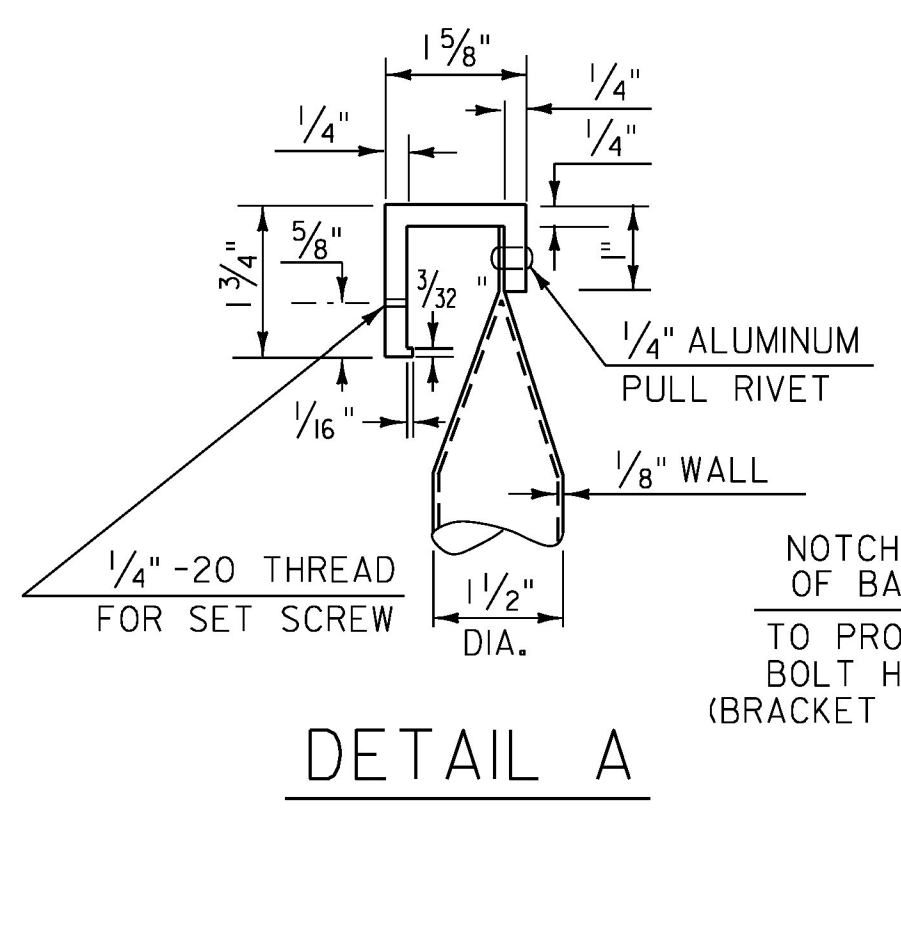


COPING DETAIL

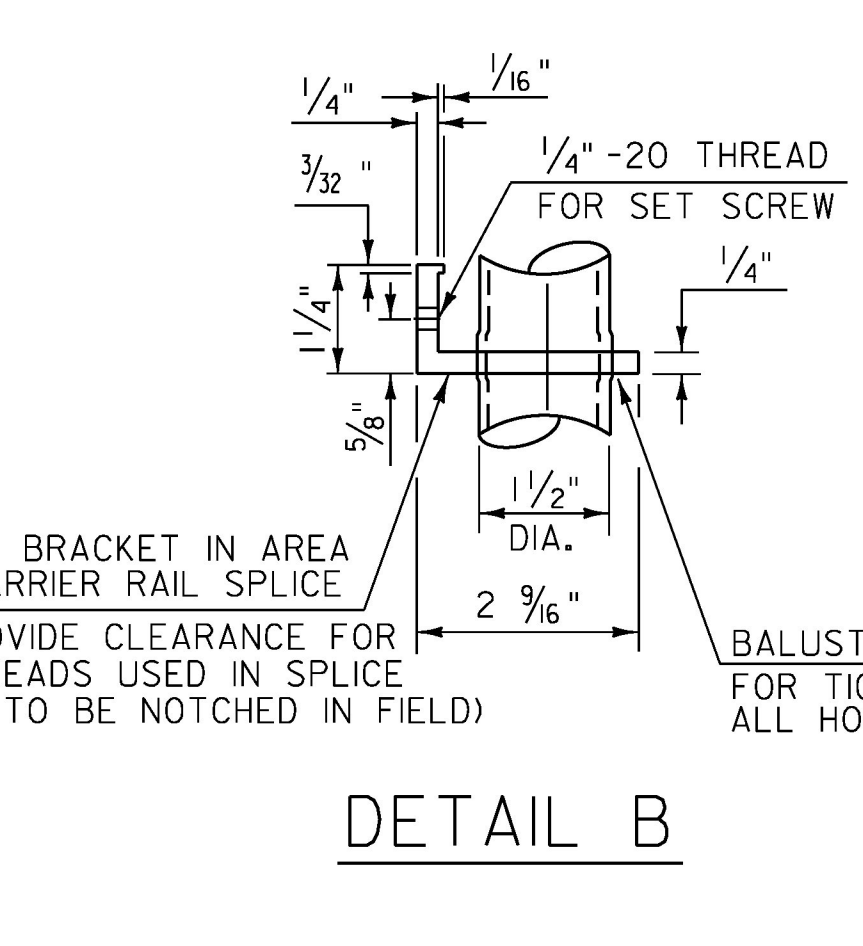


FRONT ELEVATION OF THREE RAIL WITH SPINDLES

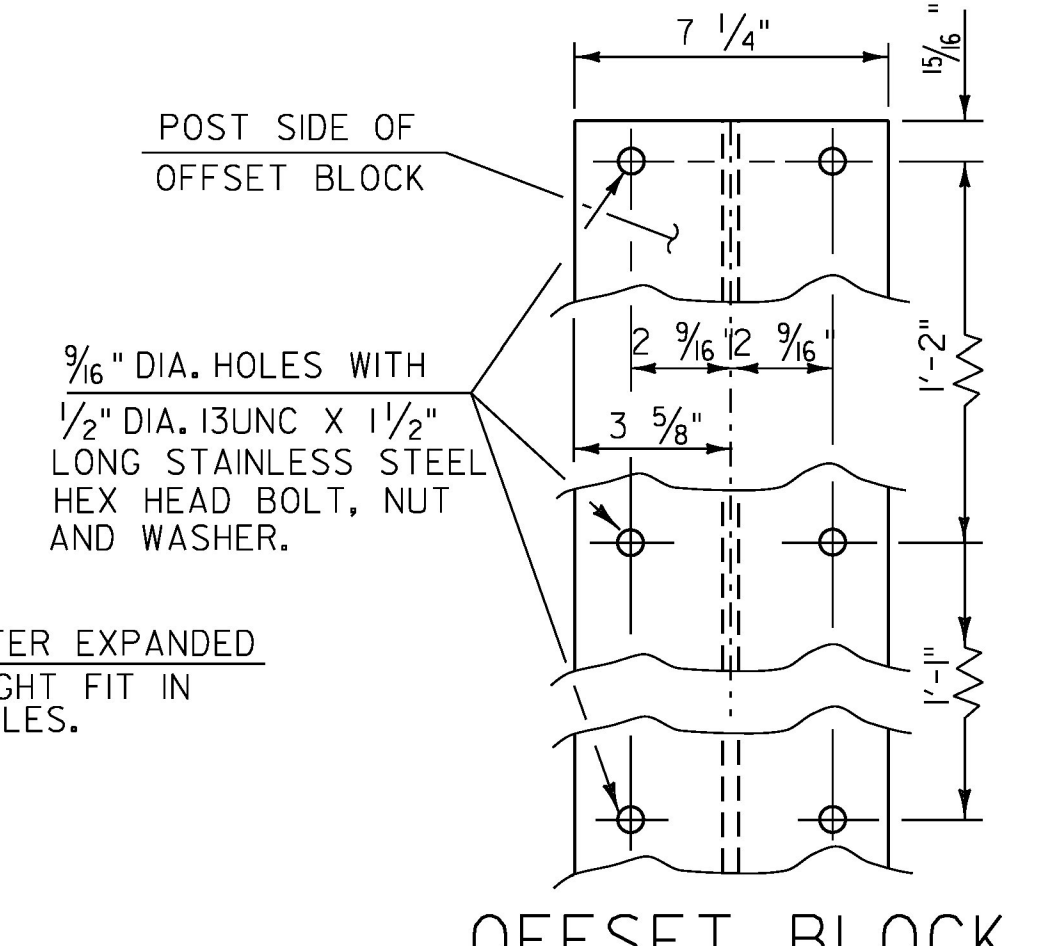
NOTE: RAIL POSTS ARE TO BE SET NORMAL TO GRADE
ALL DIMENSIONS ARE TYPICAL UNLESS OTHERWISE NOTED.



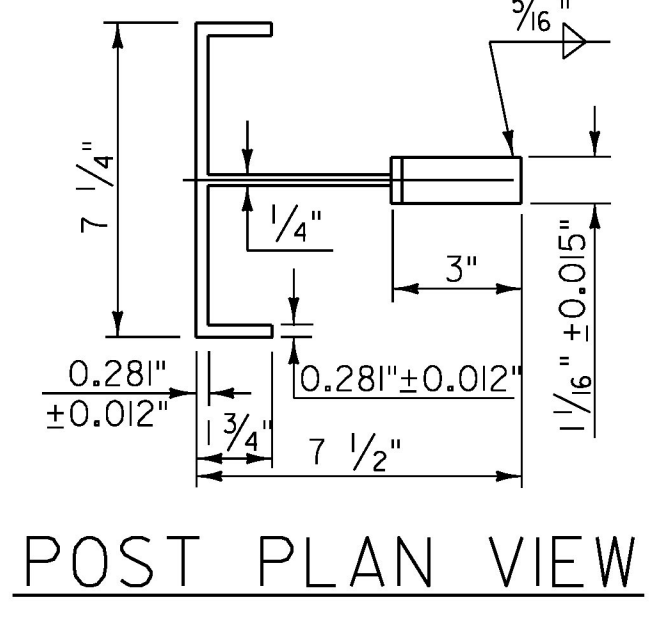
DETAIL A



DETAIL B

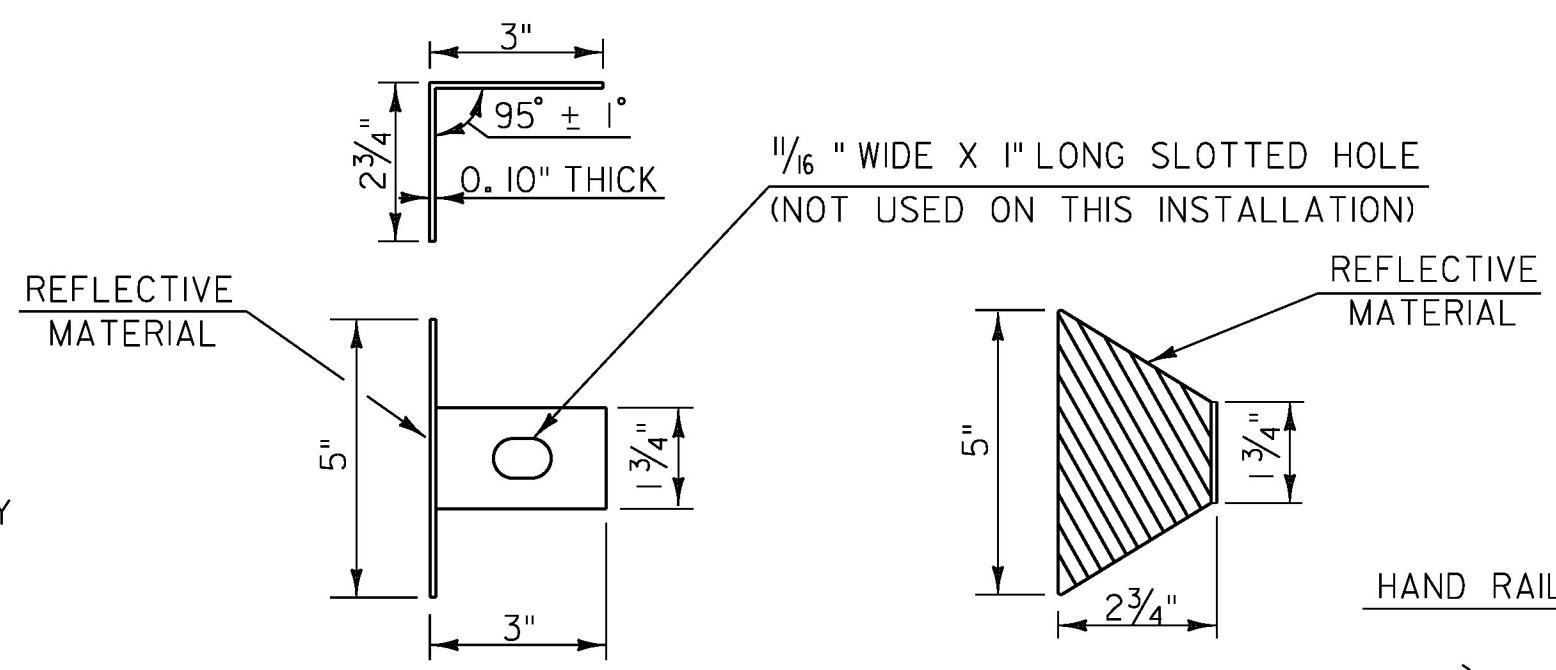


OFFSET BLOCK CONNECTION



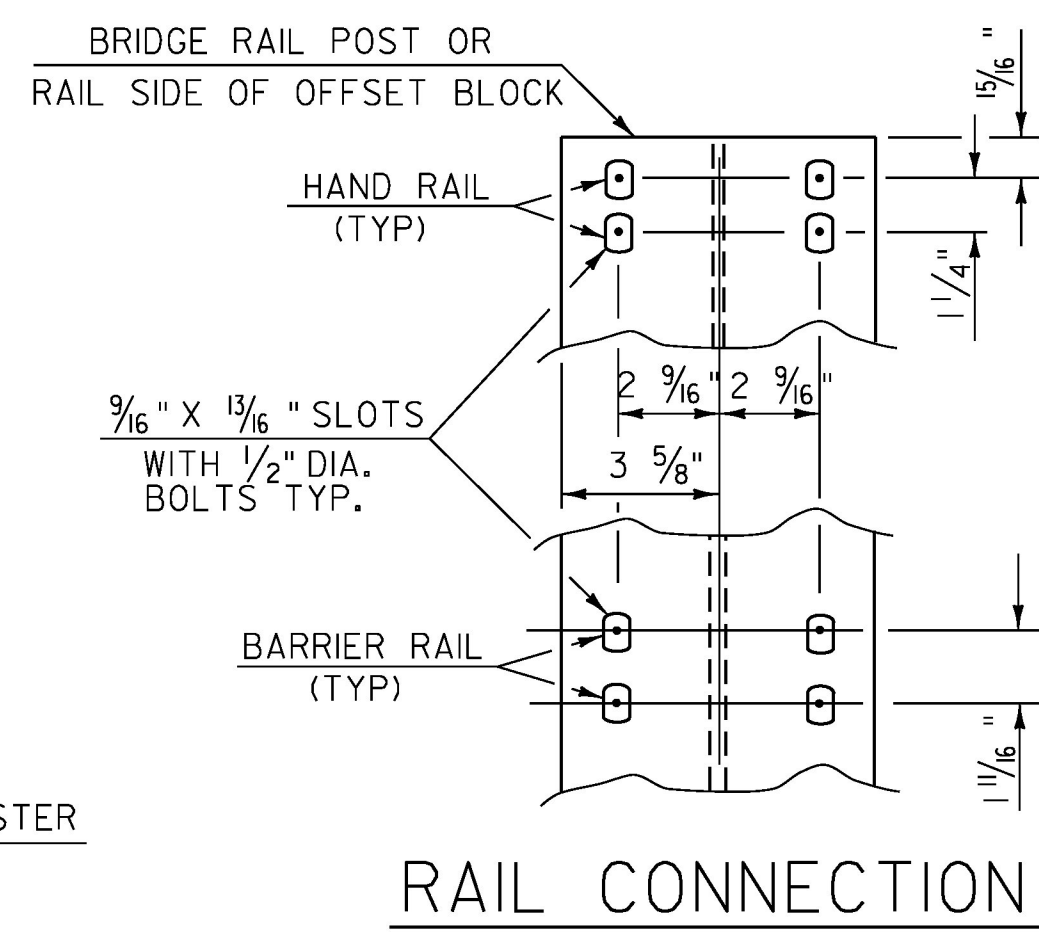
POST PLAN VIEW

THIS REFLECTORIZED ALUMINUM DELINEATOR IS TO BE ERECTED EVERY 30 FEET (OR CLOSEST POST) WITH 2 NO. 8 X 3/4" SELF-TAPPING SCREWS.
DELINEATORS SHALL MEET SPECIFICATION REQUIREMENTS FOR ASTM B209 ALLOY 5052-H32.
REFLECTIVE MATERIAL SHALL MEET THE REQUIREMENTS OF SUBSECTION 750.08b AND SHALL BE REFLECTIVE SHEETING YELLOW OR WHITE. YELLOW IS TO BE INSTALLED ON THE DRIVER'S LEFT AND WHITE ON THEIR RIGHT.
ON BRIDGES WITH A SIDEWALK, DELINEATORS ARE NOT TO BE INSTALLED ON THE SIDEWALK SIDE OF THE BRIDGE (I.E. DELINEATORS INSTALLED ONLY ON THE CURB SIDE AND ON THE APPROACH RAIL ON THE CURB SIDE) PAYMENT SHALL BE INCIDENTAL TO ALL OTHER ITEMS.

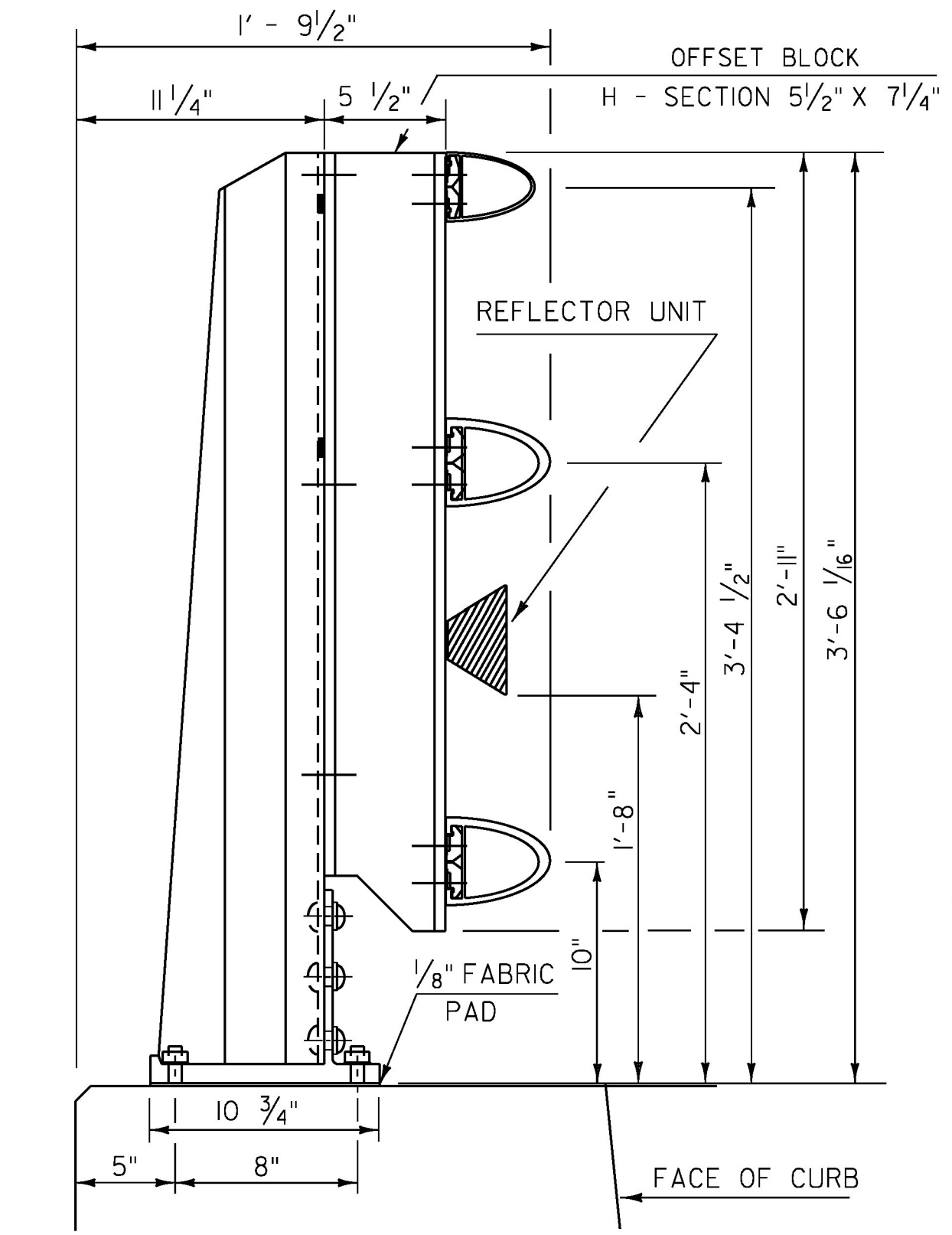


REFLECTOR DETAILS

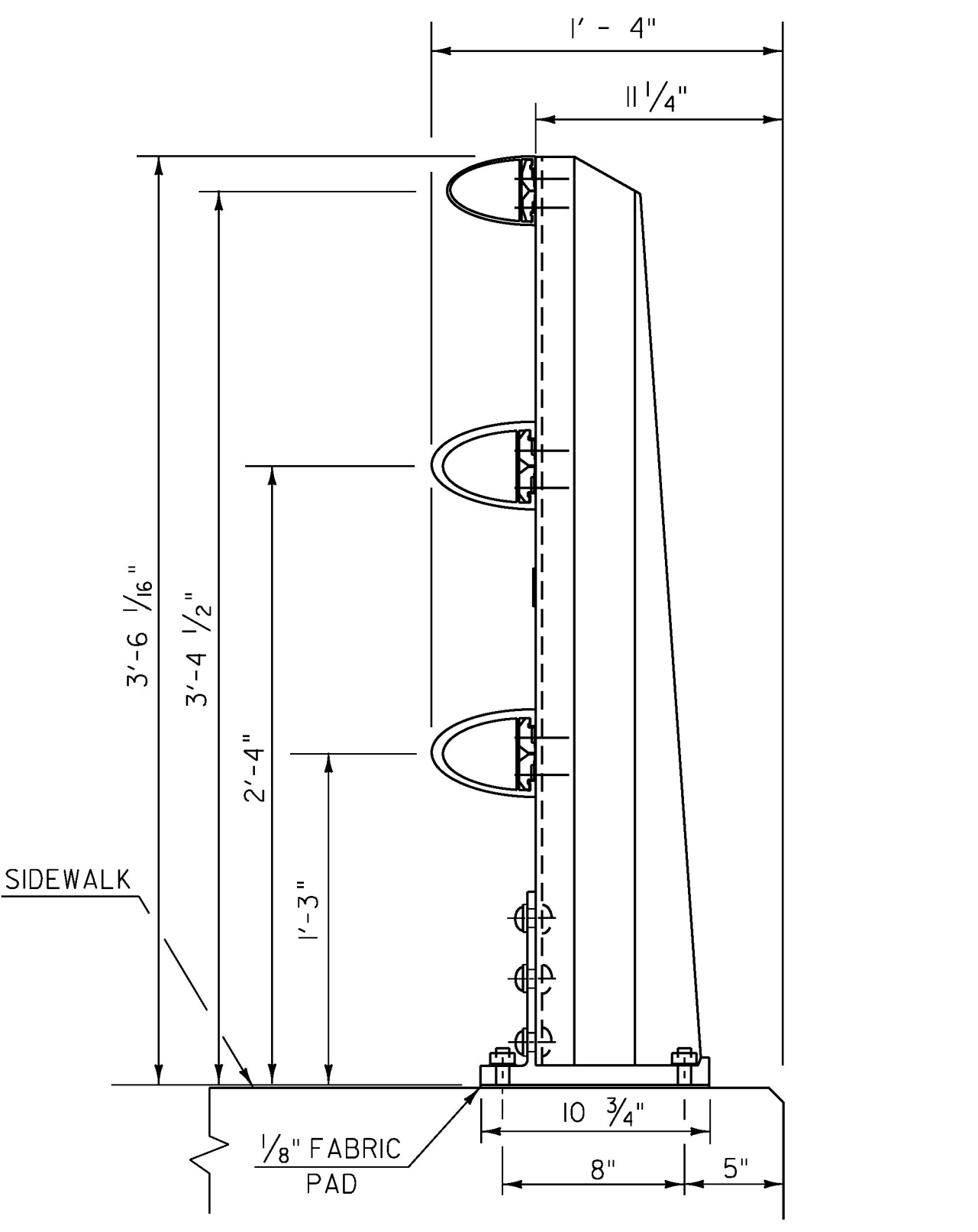
ALLOWABLE STRESSES:
RAILING : 21,000 PSI TENSION
22,000 PSI COMPRESSION
POSTS : 17,000 PSI TENSION
19,000 PSI COMPRESSION



RAIL CONNECTION

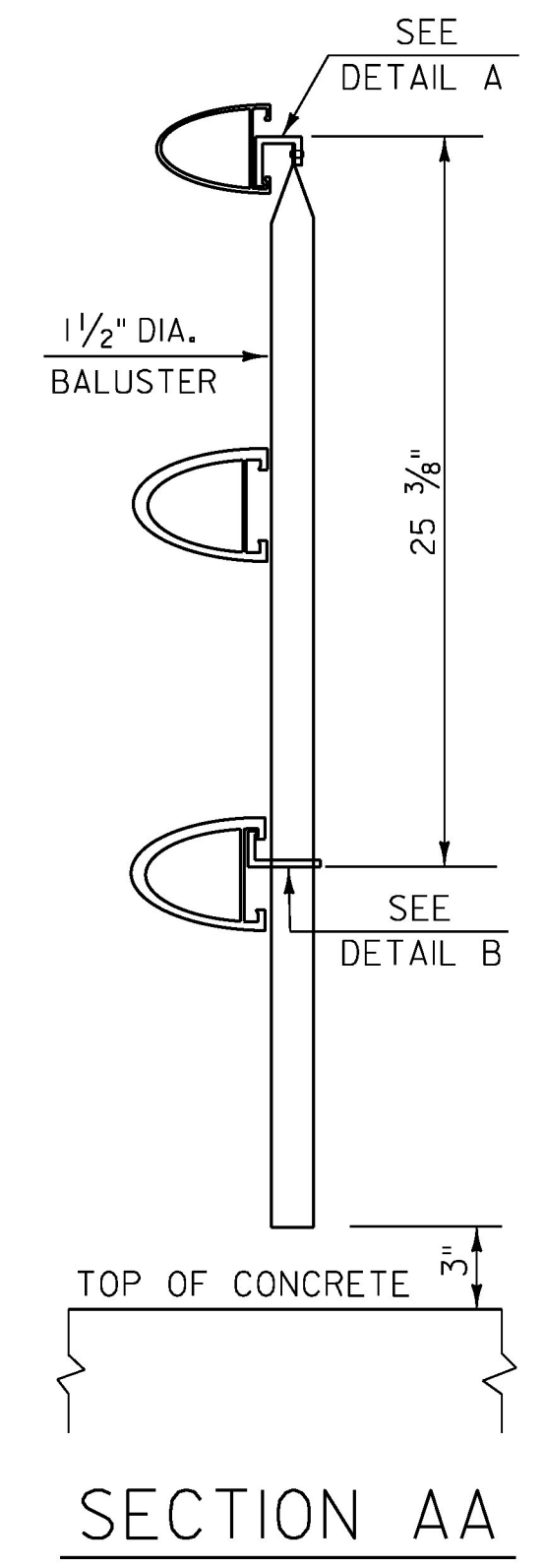


SIDE ELEVATION OF THREE RAIL TO BE USED ON CURB SIDE



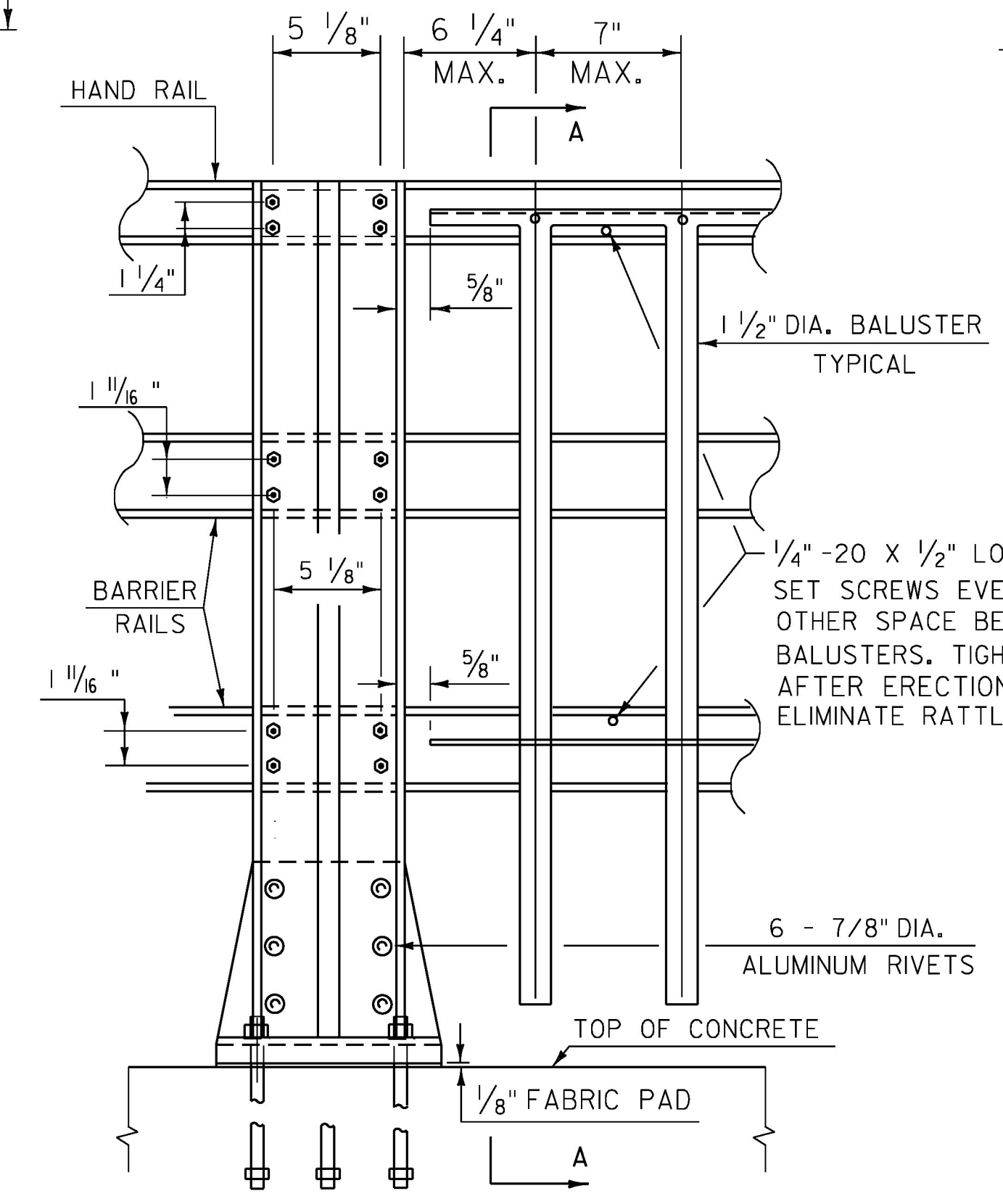
SIDE ELEVATION OF THREE RAIL TO BE USED ON SIDEWALK SIDE

RAIL POST DETAILS ON SUPERSTRUCTURE

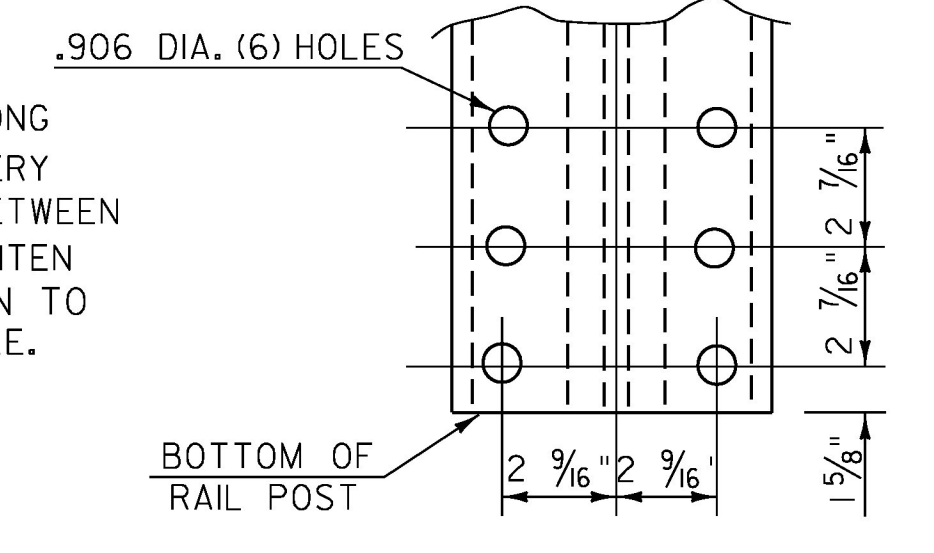


SECTION AA

DETAILS OF SPINDLES FOR ALUMINUM RAILING



OUTSIDE ELEVATION OF THREE RAIL POST & SPINDLES



POST BASE BOLT HOLE DETAILS

PROJECT NAME: MONTPELIER-WATERBURY	PLOT DATE: 20-MAR-2018
PROJECT NUMBER: IM SURF(59)	DRAWN BY: N.PAPPAS
FILE NAME: pl6v098 Montpelier-Water.dgn	CHECKED BY: M. BOGACZYK
PROJECT LEADER: M. BOGACZYK	DESIGNED BY: N. PAPPAS
BRIDGE DETAIL SHEET 7	SHEET 25 OF 34