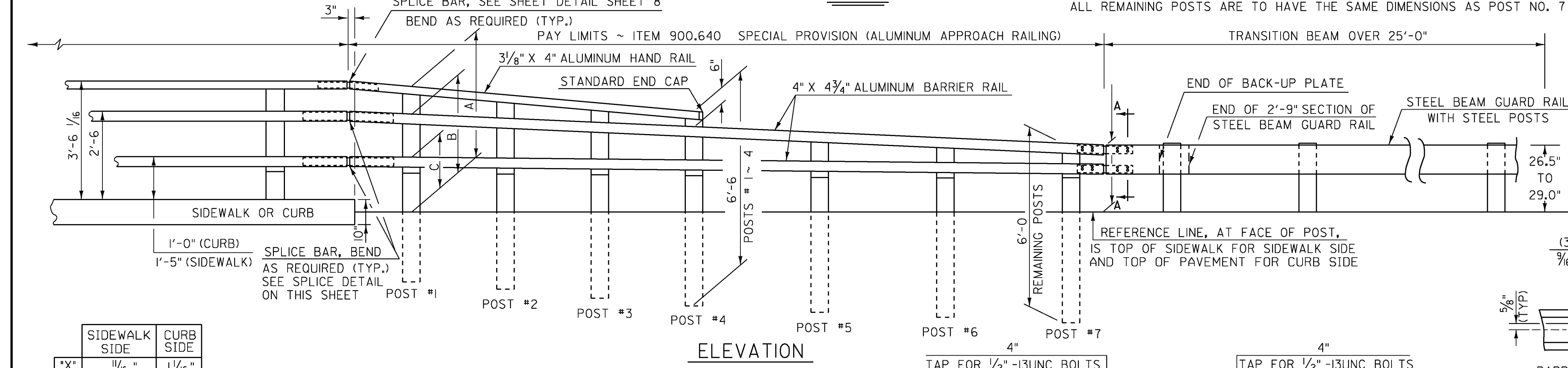
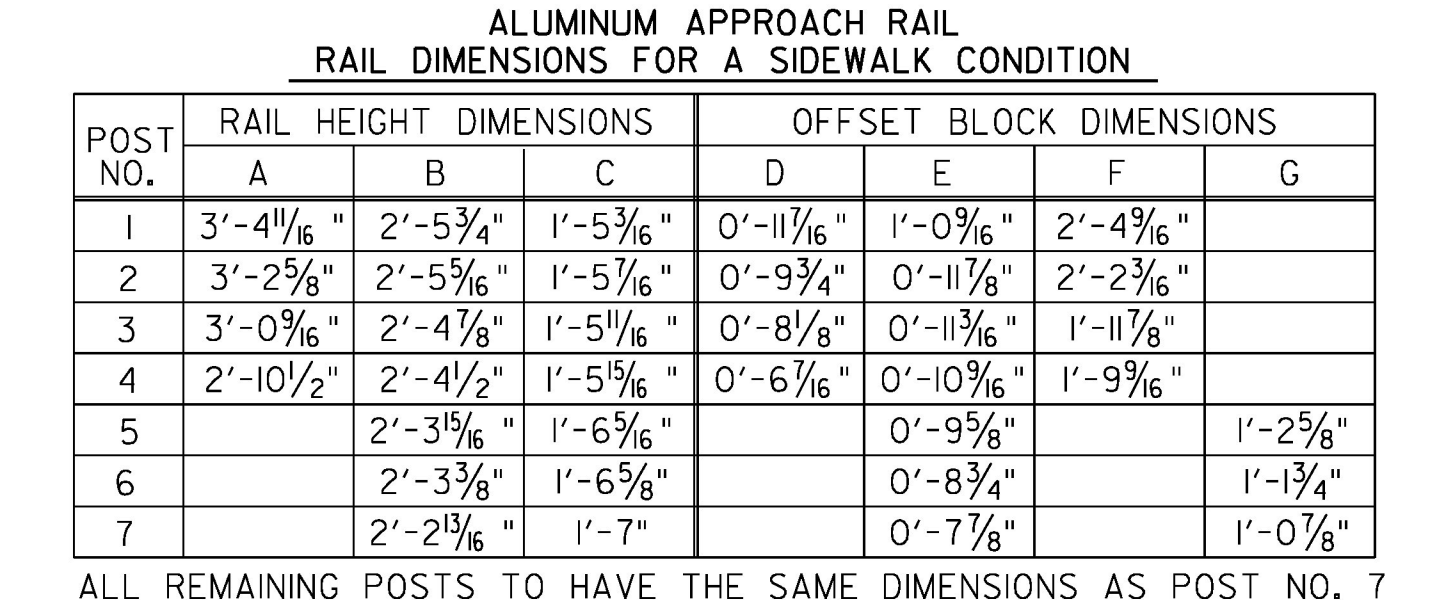
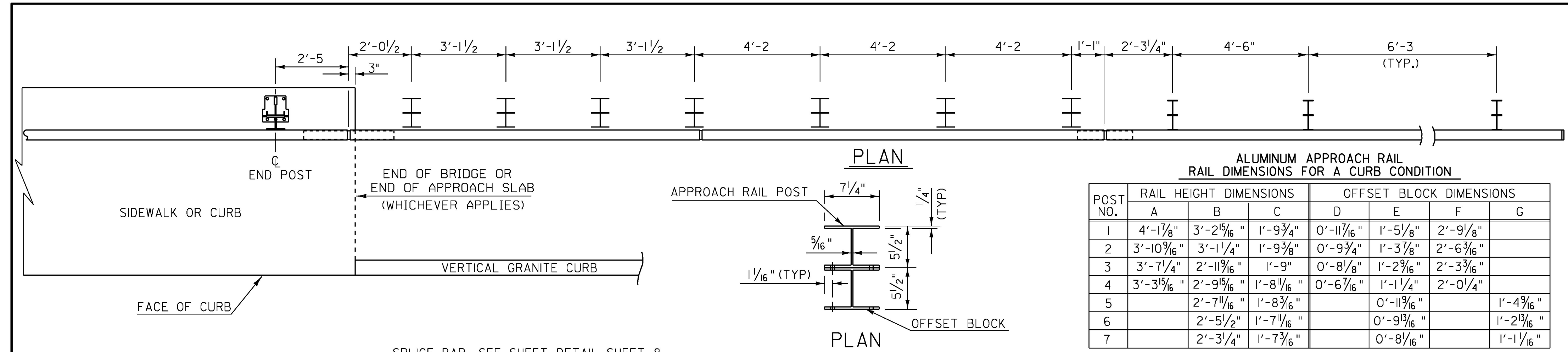
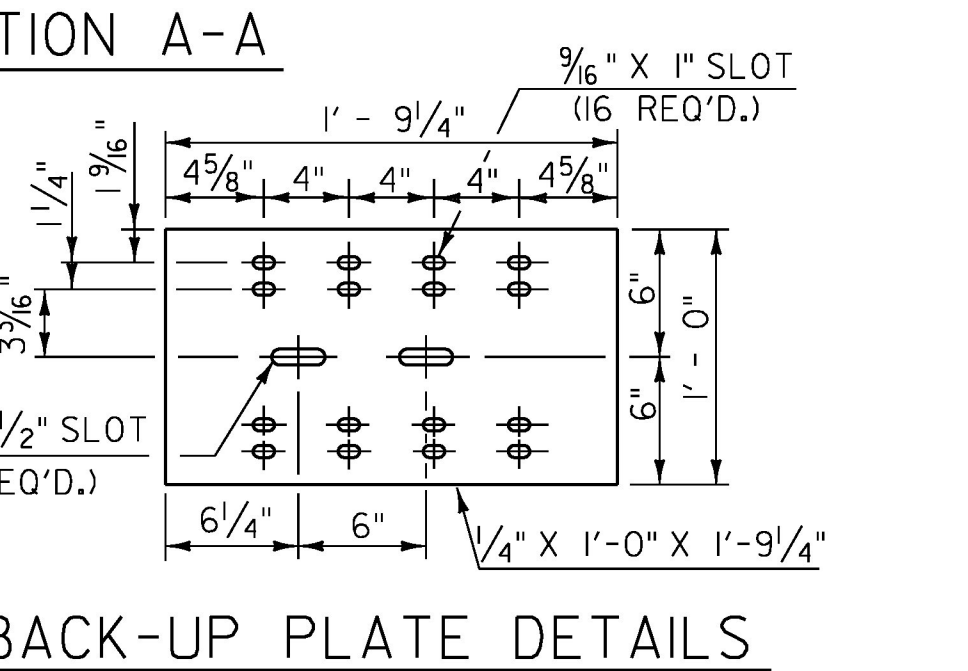
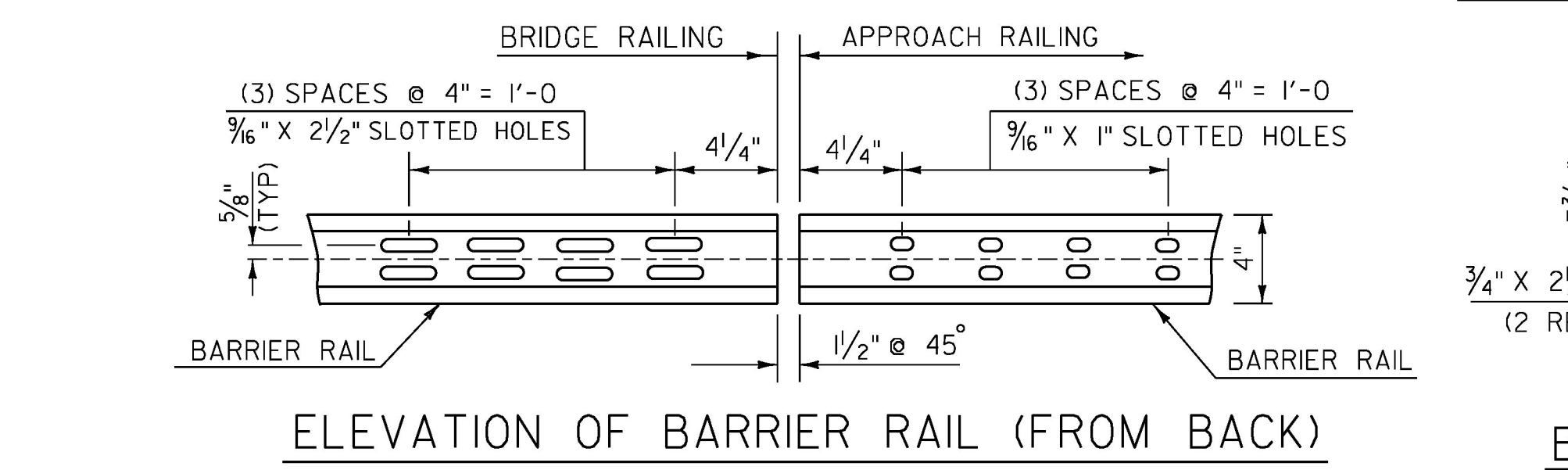
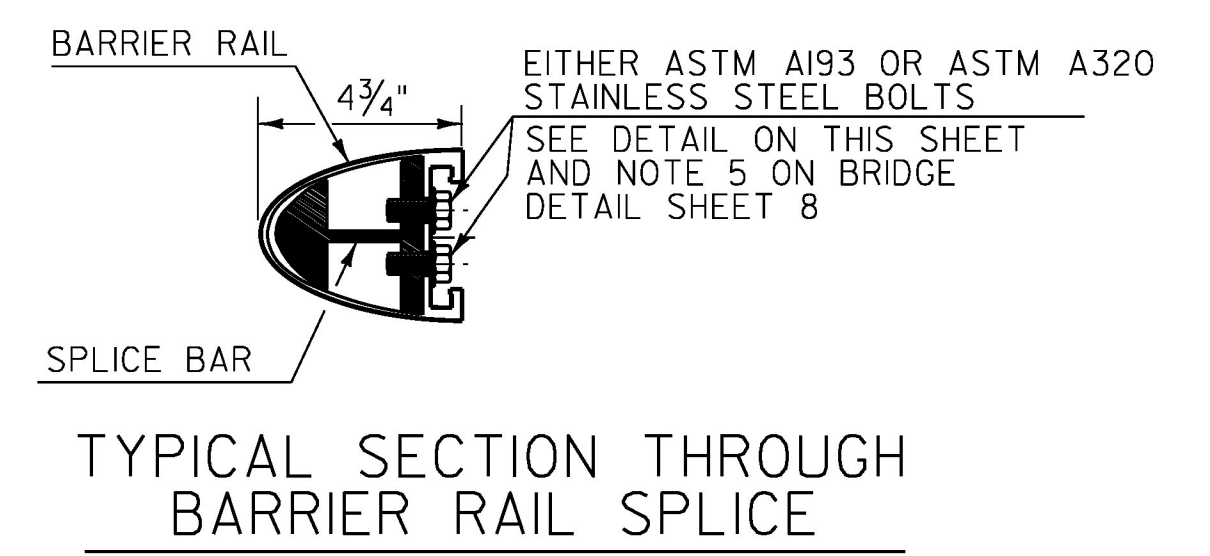
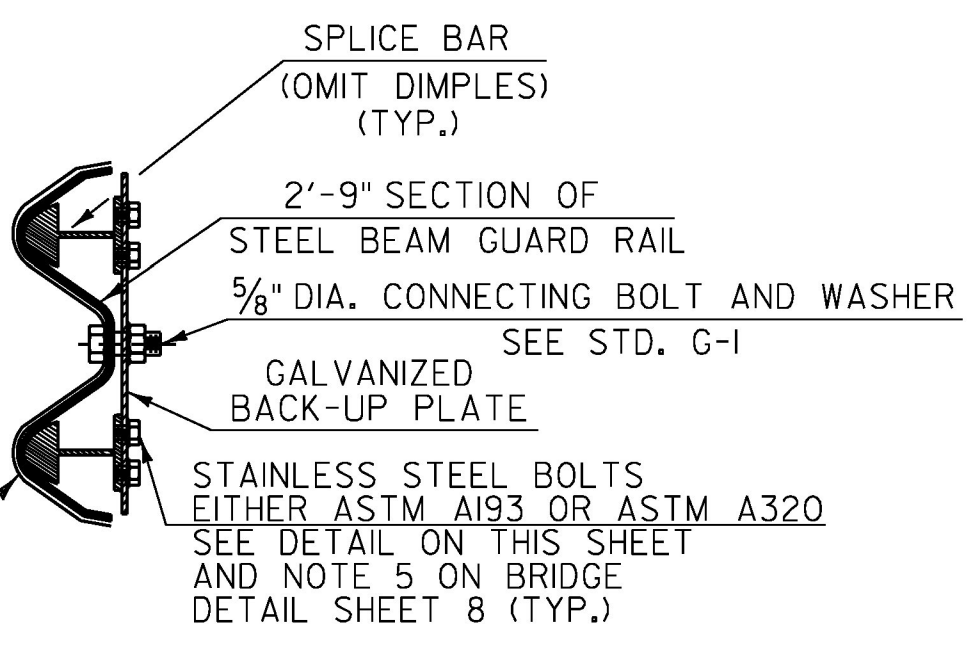
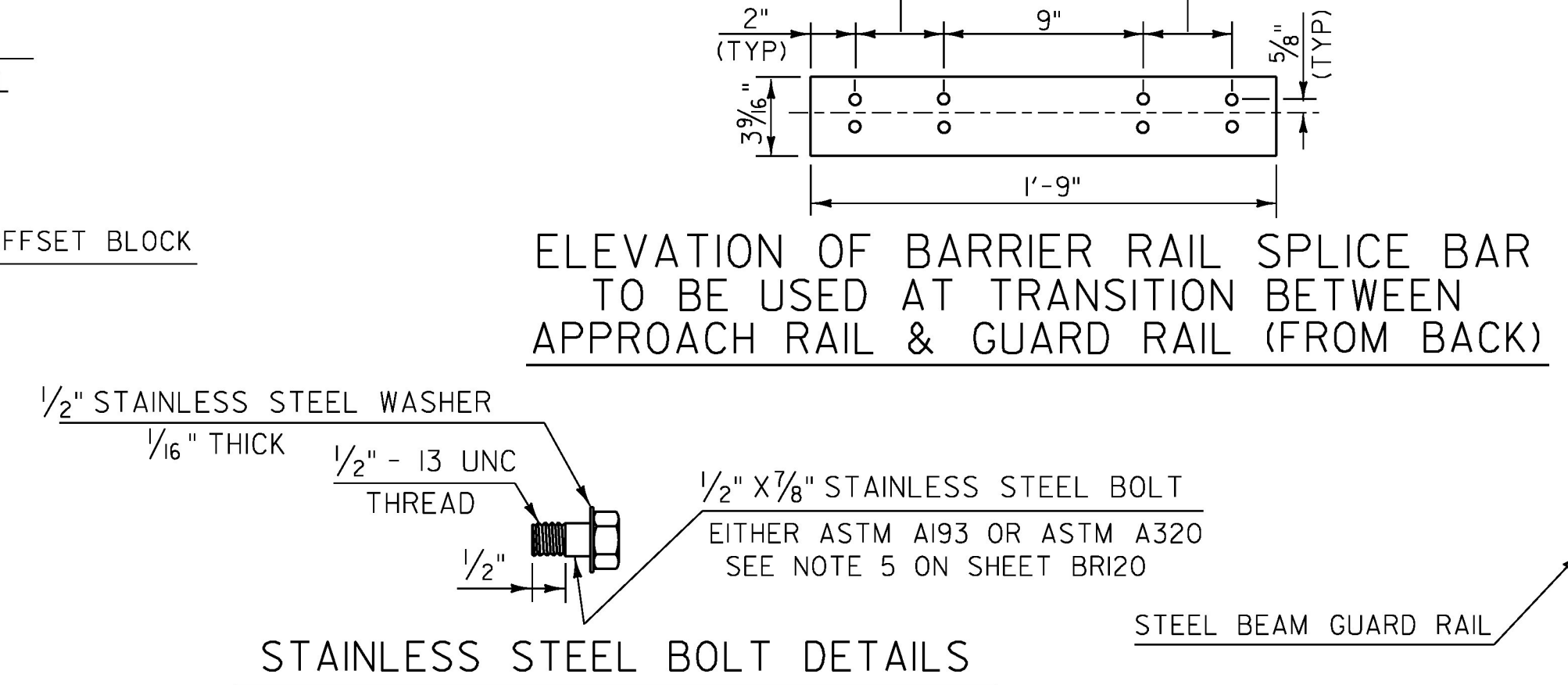
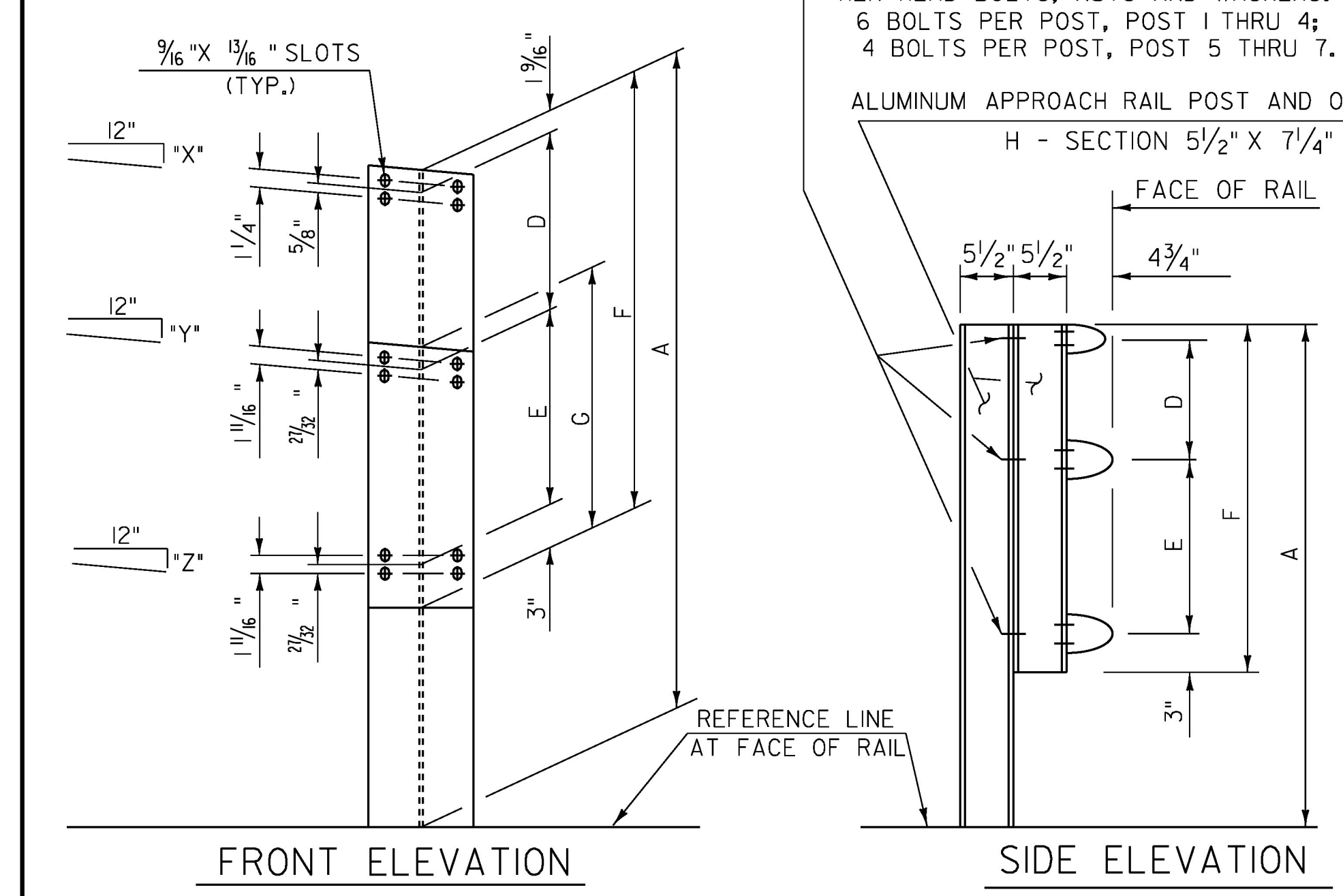


NOTES

- POST 1 THROUGH 7 SHALL BE EXTRUDED ALUMINUM.
- ALL STRUCTURAL STEEL SHALL BE AASHTO M270 GRADE 36 GALVANIZED AFTER FABRICATION.
- ALL ITEMS NOT OTHERWISE INDICATED SHALL MEET THE SPECIFICATION REQUIREMENTS OF THE STANDARD SHEETS ON WHICH THEY ARE DETAILED.
- SEE STANDARD G-1 FOR STEEL BEAM GUARDRAIL DETAILS. SEE BRIDGE DETAIL SHEET 7 AND 8.
- THE COST OF ALL MATERIALS AND LABOR FOR THE SPLICE BETWEEN THE ALUMINUM APPROACH RAILING AND THE STEEL BEAM GUARDRAIL SHALL BE INCIDENTAL TO ITEM 900.640 SPECIAL PROVISION (ALUMINUM APPROACH RAILING).
- DETAILS ARE SHOWN FOR TRANSITION TO A 3 RAIL ALUMINUM BRIDGE RAILING.
- DIMENSIONS SHOWN ARE FROM A REFERENCE LINE AT THE FACE OF POST FOR A NORMAL CROWNED SECTION. APPROPRIATE CORRECTIONS SHALL BE MADE FOR CROSS SLOPES OTHER THAN A NORMAL SECTION.



	SIDEWALK SIDE	CURB SIDE
*X"	1/16"	1/16"
*Y"	1/8"	9/16"
*Z"	1/16"	1/8"



PROJECT NAME: MONTPELIER-WATERBURY
 PROJECT NUMBER: IM SURF(59)
 FILE NAME: pl6v098 Montpelier-Water.dgn PLOT DATE: 20-MAR-2018
 PROJECT LEADER: M. BOGACZYK DRAWN BY: N. PAPPAS
 DESIGNED BY: N. PAPPAS CHECKED BY: M. BOGACZYK
 BRIDGE DETAIL SHEET 6 SHEET 24 OF 34