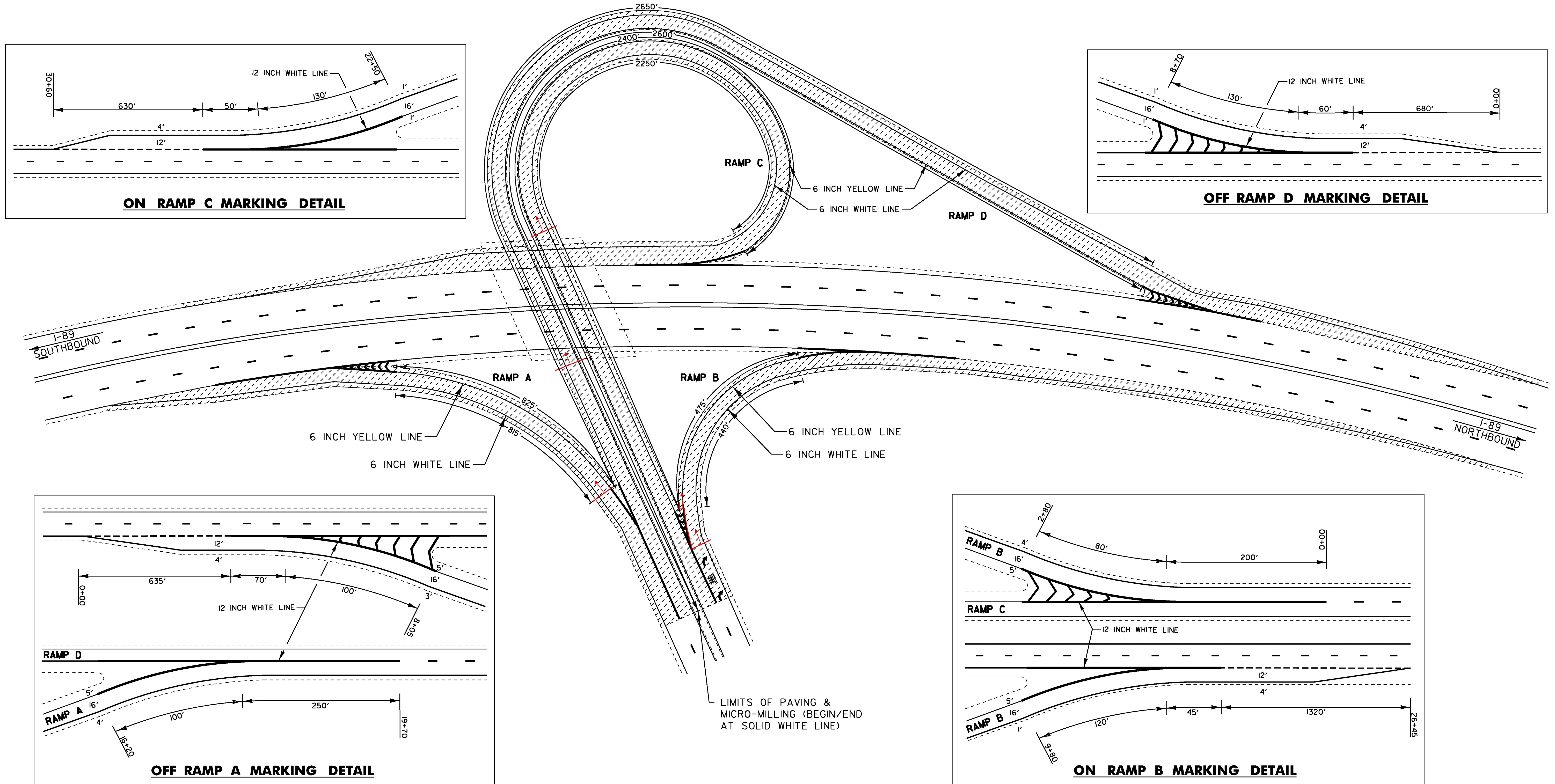


TEMPORARY 6 INCH WHITE LINE &
DURABLE 6 INCH WHITE LINE, (SEE OPTION ITEM)
RAMP A - SOLID RT (1165')
RAMP A - DOTTED (635')
RAMP B - SOLID RT (720')
RAMP B - DOTTED (1320')
RAMP C - SOLID RT (2250')
RAMP D - SOLID RT (2650')
RAMP D - DOTTED (630')

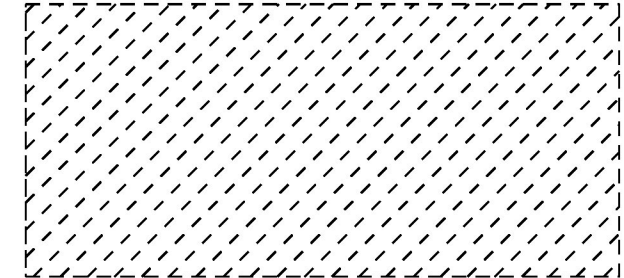
TEMPORARY 6 INCH YELLOW LINE &
DURABLE 6 INCH YELLOW LINE, (SEE OPTION ITEM)
RAMP A - SOLID LT (825')
RAMP B - SOLID LT (475')
RAMP C - SOLID LT (2600')
RAMP D - SOLID LT (2400')

TEMPORARY 12 INCH WHITE LINE &
DURABLE 12 INCH WHITE LINE, (SEE OPTION ITEM)
RAMP A - GORE AREA (~~800~~) 348'
RAMP B - GORE AREA (~~700~~) 329'
RAMP C - GORE AREA (~~260~~) 301'
RAMP D - GORE AREA (~~450~~) 416'

TEMPORARY LETTER OR SYMBOL, PAINT &
DURABLE LETTER OR SYMBOL (OPTION BID ITEM)
RAMP B - "R" (1 EACH)
RAMP B - "ONLY" (4 EACH)
RAMP B - "R" (1 EACH)



LEGEND: MICRO-MILLING AREA FOR RAMPS



= LIMITS OF MICRO-MILLING AND PPST

EXIT 8 RAMP DETAILS

NOTE: SEE PAVEMENT MARKING DETAIL SHEET 4 FOR ADDITIONAL MARKING DETAILS

NOT TO SCALE

PROJECT NAME:	MONTPELIER-WATERBURY
PROJECT NUMBER:	IM SURF(59)
FILE NAME: pl6v098 Montpelier-Water.dgn	PLOT DATE: 20-MAR-2018
PROJECT LEADER: M. BOGACZYK	DRAWN BY: N. PAPPAS
DESIGNED BY: N. PAPPAS	CHECKED BY: M. BOGACZYK
PAVEMENT MARKING DETAIL SHEET 2	SHEET 16 OF 34