

TEMPORARY 4 INCH WHITE LINE, PAINT
 4 INCH WHITE LINE, WATERBORNE PAINT
 (ALL LINES WILL INCLUDE EDGE LINE
 BREAKS AND RADII FOR SIDE ROADS)
 75+00 TO N 25+00 LT & RT (SOLID)

TEMPORARY 4 INCH YELLOW LINE, PAINT
 4 INCH YELLOW LINE, WATERBORNE PAINT
 (ALL LINES WILL INCLUDE C
 BREAKS FOR SIDE ROADS)
 75+00 TO N 25+00 LT & RT (SOLID)

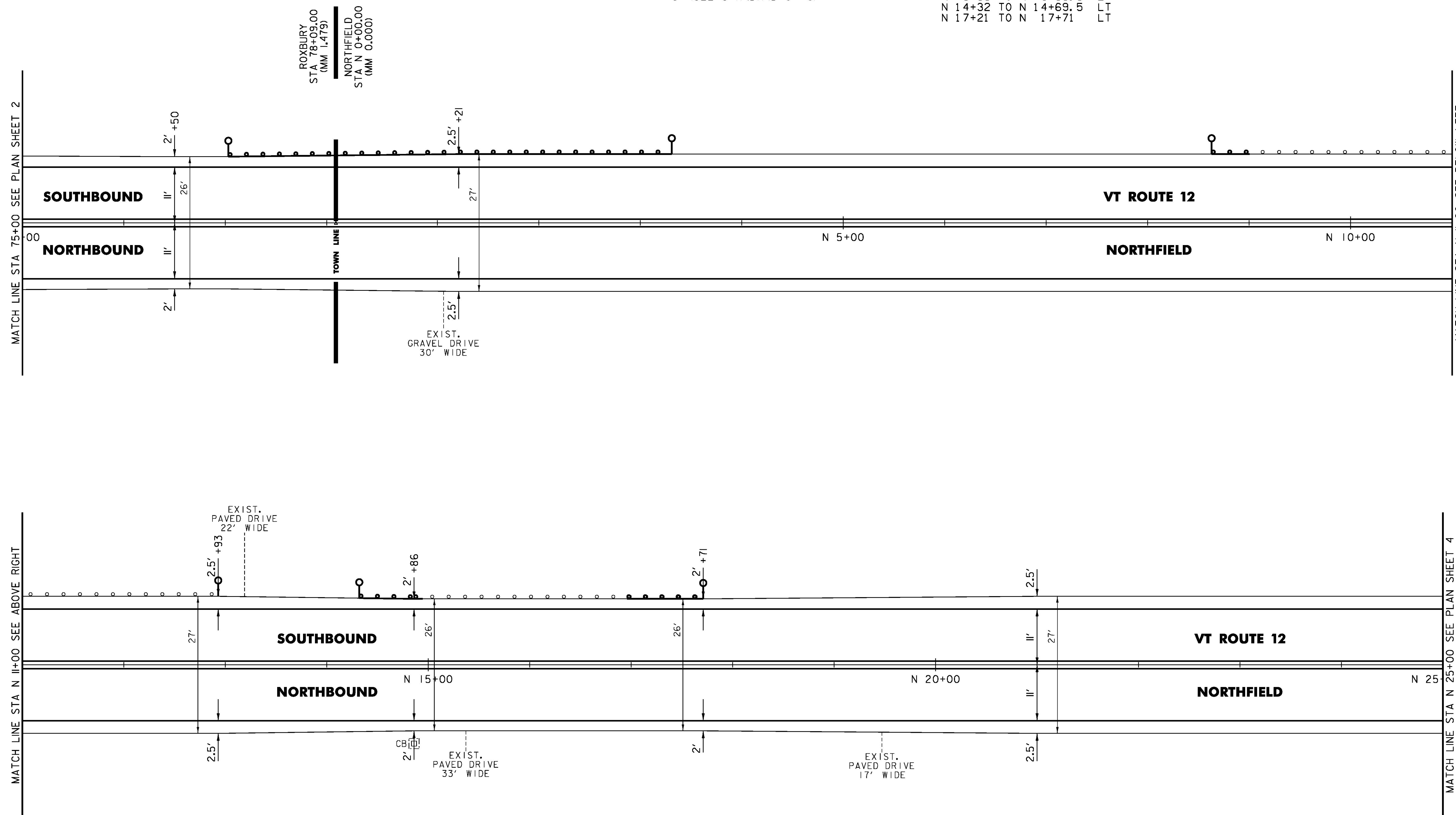
STEEL BEAM GUARDRAIL, GALVANIZED
 77+03 TO 77+40.5 LT
 N 2+81 TO N 3+31 LT
 N 8+63 TO N 9+00.5 LT
 N 14+32 TO N 14+69.5 LT
 N 17+21 TO N 17+71 LT

ANCHOR FOR STEEL BEAM RAIL
 5 (SEE STANDARD G-1d)

REMOVE AND RESET GUARDRAIL
 77+40.5 TO N 2+81 LT
 N 14+69.5 TO N 14+94.5 LT
 N 16+96 TO N 17+21 LT

REMOVAL AND DISPOSAL OF GUARDRAIL
 77+03 TO 77+40.5 LT
 N 2+81 TO N 3+31 LT
 N 8+63 TO N 9+00.5 LT
 N 14+32 TO N 14+69.5 LT
 N 17+21 TO N 17+71 LT

DELINEATOR WITH STEEL POST
 77+03 LT
 N 3+31 LT
 N 8+63 LT
 N 12+93 LT
 N 14+32 LT
 N 17+71 LT



NOT TO SCALE

PROJECT NAME: ROXBURY-NORTHFIELD	
PROJECT NUMBER: STP FPAV(6)	
FILE NAME: z16v027bdr.dgn	PLOT DATE: 2/8/2017
PROJECT LEADER: P. SHEDD	DRAWN BY: S. GOODWIN
DESIGNED BY: N. LEMAY	CHECKED BY: P. SHEDD
PLAN SHEET 3	SHEET 16 OF 21