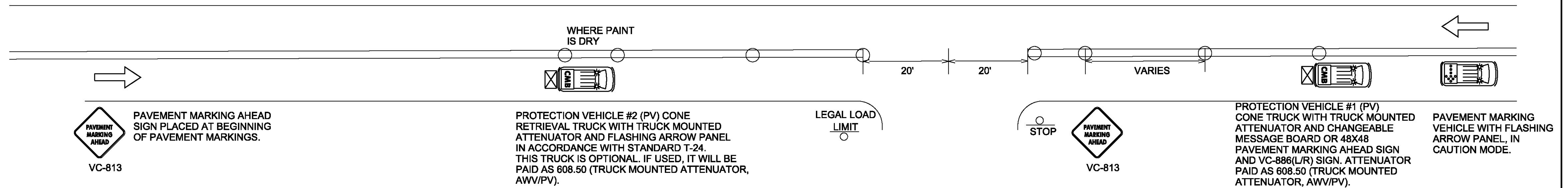


TRAFFIC CONTROL PLAN



NOTES

1. ALL WORK VEHICLES USED SHALL DISPLAY HIGH-INTENSITY ROTATING, FLASHING, OSCILLATING OR STROBE LIGHTS.
2. ALL PROTECTION VEHICLES SHALL BE EQUIPPED WITH A TRUCK MOUNTED ATTENUATOR WITH A VC-866(L/R) SIGN IN ACCORDANCE WITH STANDARD T-29 ATTACHED AND A FLASHING ARROW PANEL IN ACCORDANCE WITH STANDARD T-24. PAYMENT WILL BE MADE UNDER ITEM 608.50 (TRUCK MOUNTED ATTENUATOR, AWW/PV).
3. FLASHING ARROW PANELS MOUNTED TO VEHICLES WILL NOT BE PAID FOR DIRECTLY, BUT WILL BE CONSIDERED INCIDENTAL TO ITEM 641.10 (TRAFFIC CONTROL). FLASHING ARROW PANELS SHALL BE USED IN CAUTION MODE WHEN VEHICLE IS IN TRAVEL LANE.
4. PROTECTION VEHICLE #1 SHALL TRAVEL AT A VARYING DISTANCE FROM PAVEMENT MARKING VEHICLE WHILE SETTING CONES ON THE WET PAINT TO ENSURE ADEQUATE SIGHT DISTANCE FOR TRAFFIC APPROACHING FROM THE REAR.
5. UNIFORMED TRAFFIC OFFICER (UTO) REQUIRED FOR NIGHT WORK, AND AT OTHER TIMES AS DIRECTED BY THE ENGINEER. UNIFORMED TRAFFIC OFFICERS WILL BE PAID UNDER ITEM 630.10 (UNIFORMED TRAFFIC OFFICERS).
6. THE NUMBER OF CHANNELIZING DEVICES AND OTHER TRAFFIC CONTROL DEVICES SHOWN ON THIS SHEET ARE FOR ILLUSTRATIVE PURPOSES ONLY. THE ACTUAL NUMBER REQUIRED IS TO BE DETERMINED BY THE CONTRACTOR IN ACCORDANCE WITH THE MUTCD AND STANDARD T-24 BASED ON FIELD CONDITIONS OR AS DIRECTED BY THE ENGINEER.
7. CONE VEHICLES SHALL HAVE PROTECTIVE CAGES TO PROTECT THE PERSON PLACING AND RETRIEVING CONES.
8. PAVEMENT MARKING AHEAD SIGNS IN ACCORDANCE WITH STANDARD T-28 SHALL BE PLACED AT THE BEGINNING OF PAVEMENT MARKING OPERATION AND AT A MINIMUM OF EVERY 3 MILES. THEY SHALL ALSO BE PLACED AFTER EVERY NUMBERED STATE HIGHWAY OR MAJOR INTERSECTION INCLUDING COMMERCIAL DRIVES.
9. WORK VEHICLES SHALL PULL OVER TO ALLOW VEHICLES TO PASS AT REASONABLE INTERVALS TO AVOID EXCESSIVE QUEUING AND DELAYS.
10. CONE PICK-UP MAY BE ACCOMPLISHED USING DEDICATED VEHICLE (PV#2) OR BY PROTECTION VEHICLE #1 WHEN PAINT TRUCK IS NOT OPERATING AND PAINT IS DRY. QUANTITY OF 608.50 (TRUCK MOUNTED ATTENUATOR, AWW/PV) SHALL BE MEASURED AS THE NUMBER OF VEHICLE HOURS USED.
11. CONES SHALL BE LEFT IN PLACE UNTIL PAINT IS DRY AND NOT TRACKING.
12. ALL TRAFFIC CONTROL ITEMS WILL BE PAID UNDER PAY ITEM 641.10 UNLESS OTHERWISE SPECIFIED.

LEGEND

- INDICATES TRAFFIC FLOW
- FLASHING ARROW PANEL
- TRUCK MOUNTED ATTENUATOR
- CHANGEABLE MESSAGE BOARD
- 28" RETROREFLECTORIZED CONE
- MARKING OPERATIONS VEHICLE

PROJECT NAME:	STATEWIDE NORTHEAST REGION
PROJECT NUMBER:	STPG MARK(306)
FILE NAME:	z16t085frrm.dgn
PROJECT LEADER:	C. LATHROP
DESIGNED BY:	P. DAY
TRAFFIC CONTROL PLAN	CHECKED BY: C. LATHROP
	PLOT DATE: 2/9/2017
	DRAWN BY: P. DAY
	SHEET 3 OF 18

NOT TO SCALE