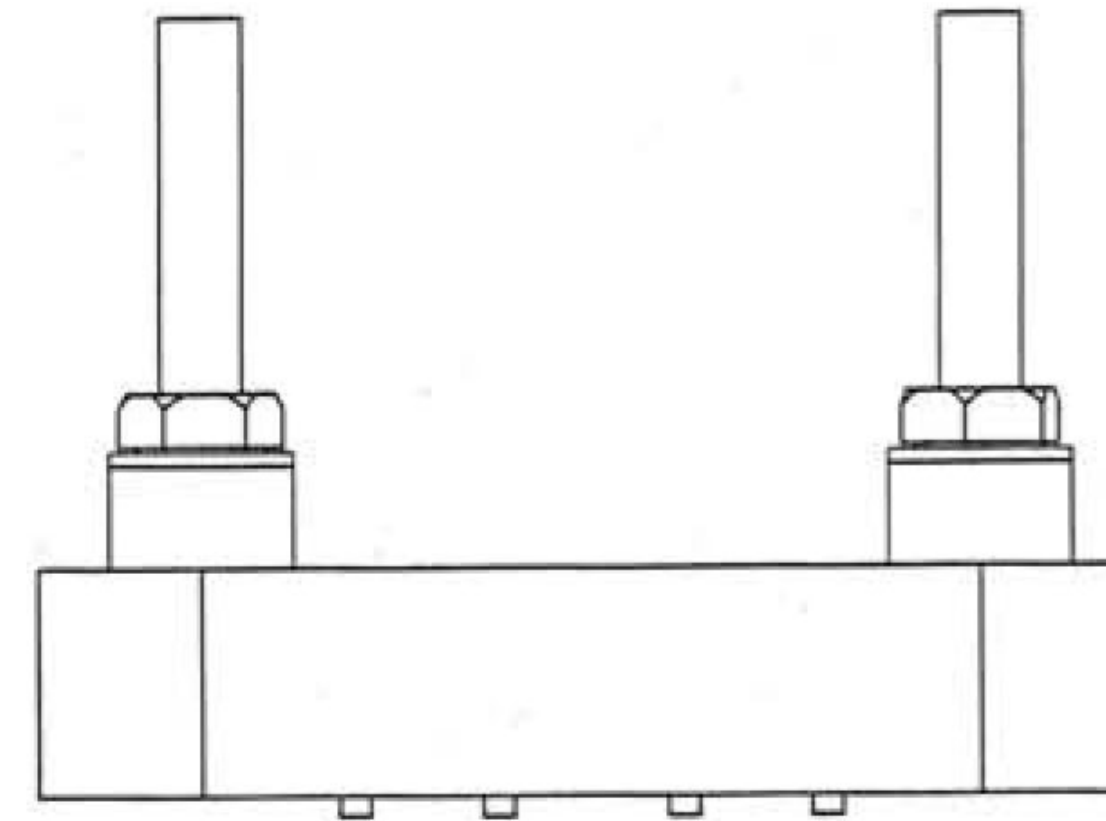
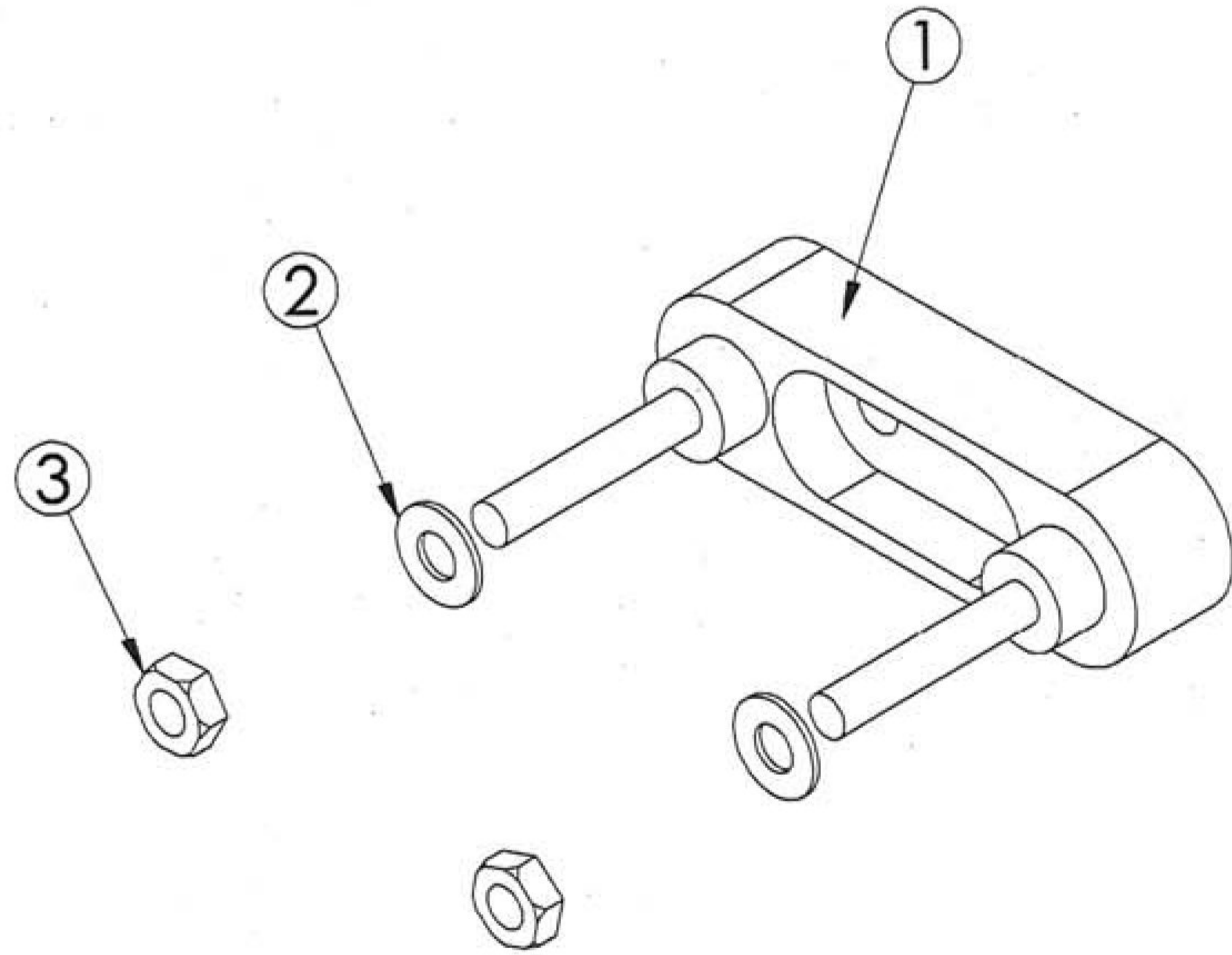



This Drawing, which contains proprietary information is the property of General Electric Company. It shall not be reproduced in any manner nor disclosed to third parties without written permission of General Electric Company



NOTE:
TORQUE NUT TO 60 IN/LBS. ±5%.

		H. P. N.		DESCRIPTION		DIN		
SLT	APPRV	ENGINEER S. TRIMBLE		SCALE 1:1		 HARMON INDUSTRIES, INC. ARGO & DILLINGHAM ROADS GRAIN VALLEY, MO 64029 (800) 825-3178		
SLT	BY	DRAWN BY S. TRIMBLE		DATE 4-14-00				
4/00	DATE	MATERIAL N/A		FINISH N/A		TITLE: ASSY, 2-WAY TERM BLK W/AAR HARD		
90027550	ECRN	TOLERANCE UNLESS NOTED						
AA0	REV	DECIMALS XX ± XXX ±	FRACTIONS + -	ANGLES + -	FILE TYPE SLDWRKS	DRAWING NO 202810-000	SHEET 1 OF 1	SIZE B