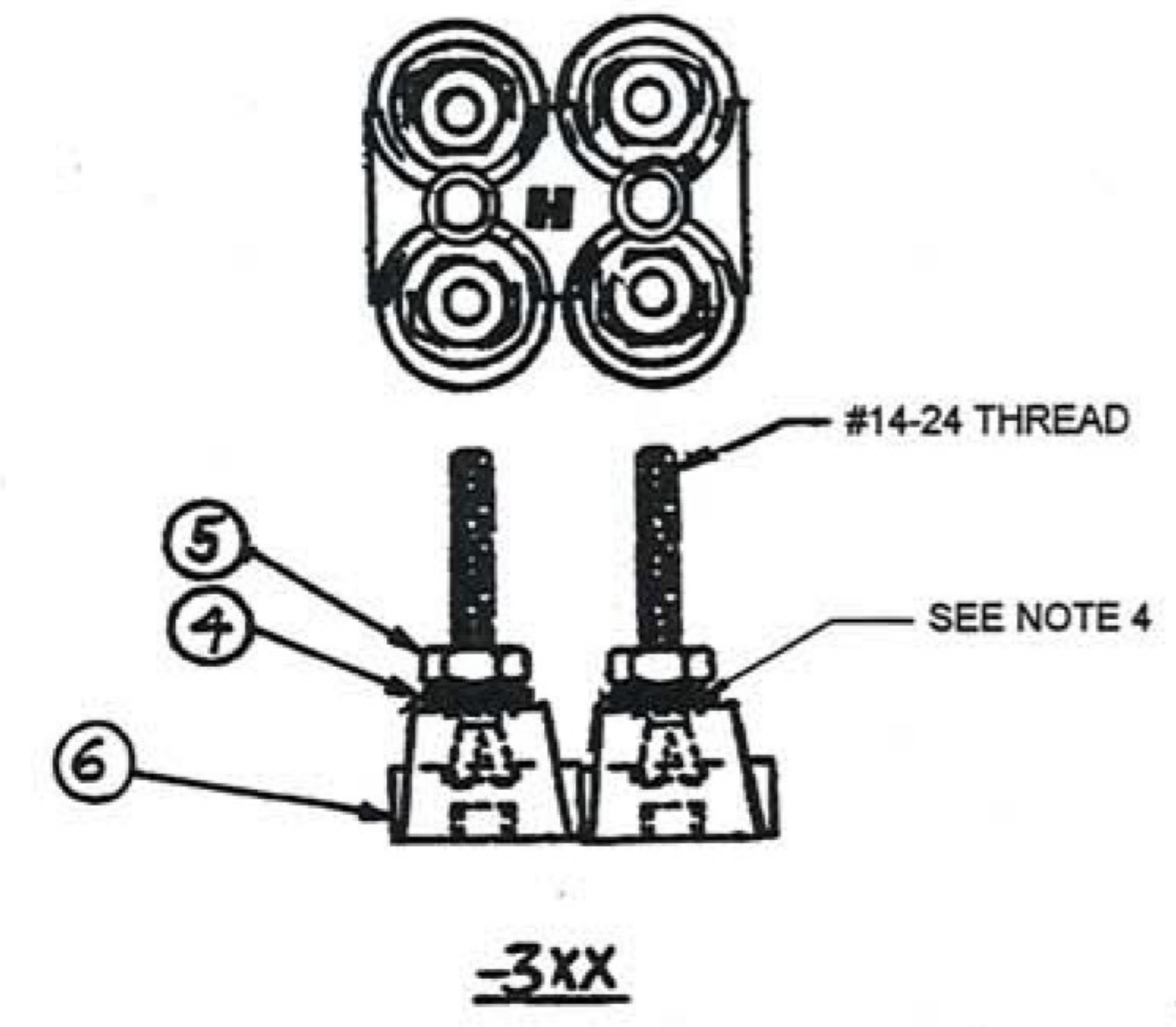
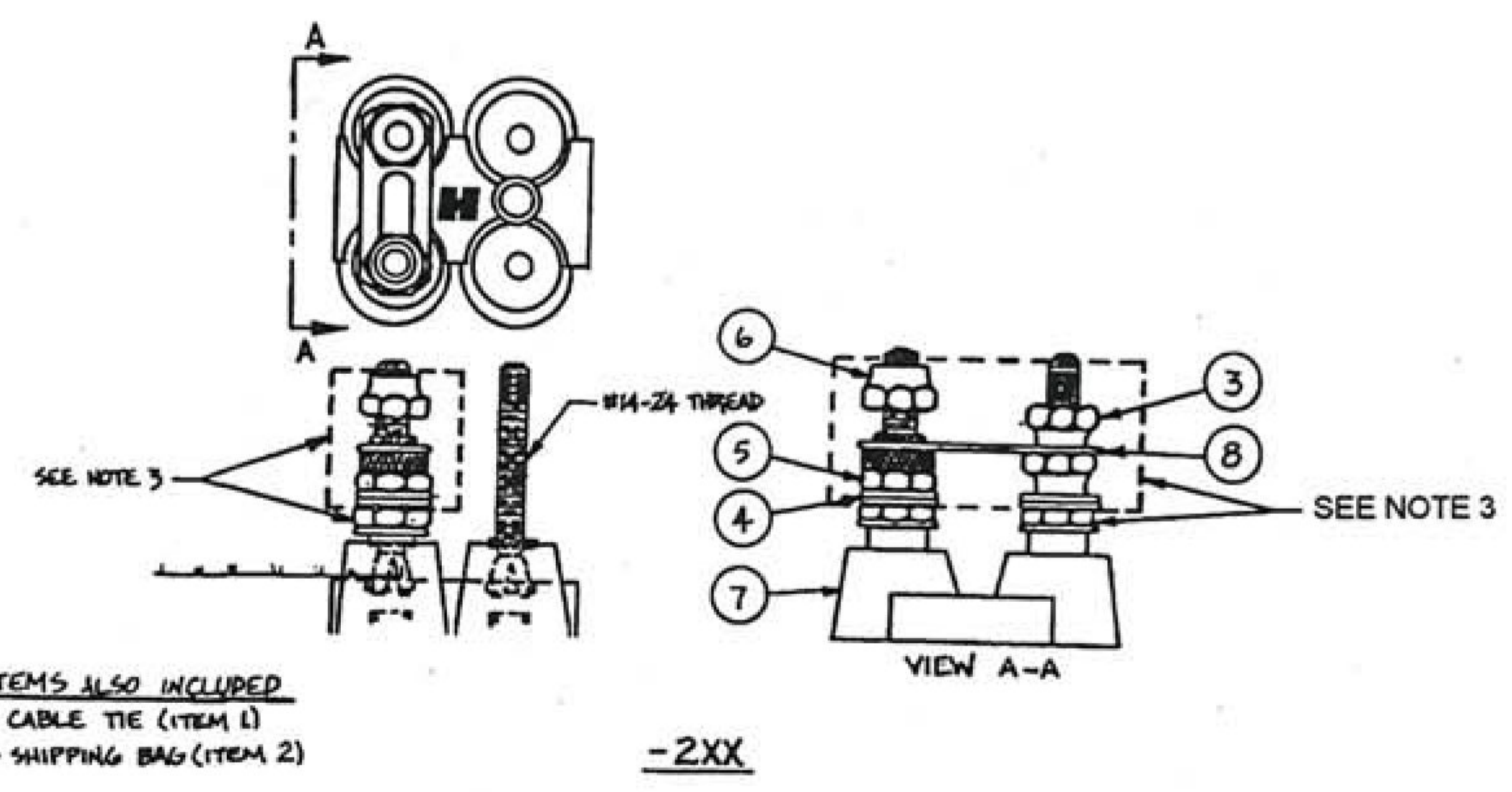
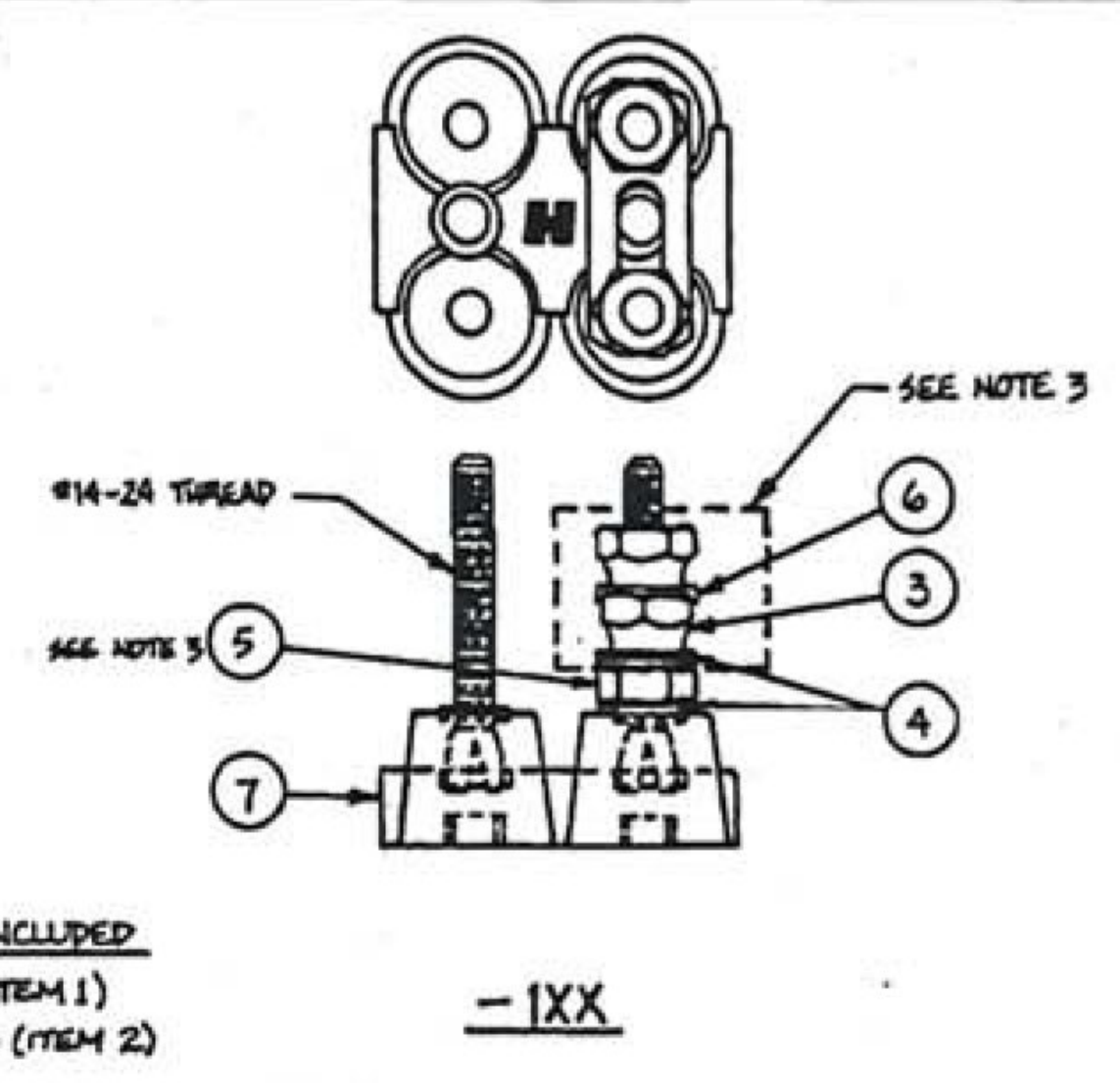
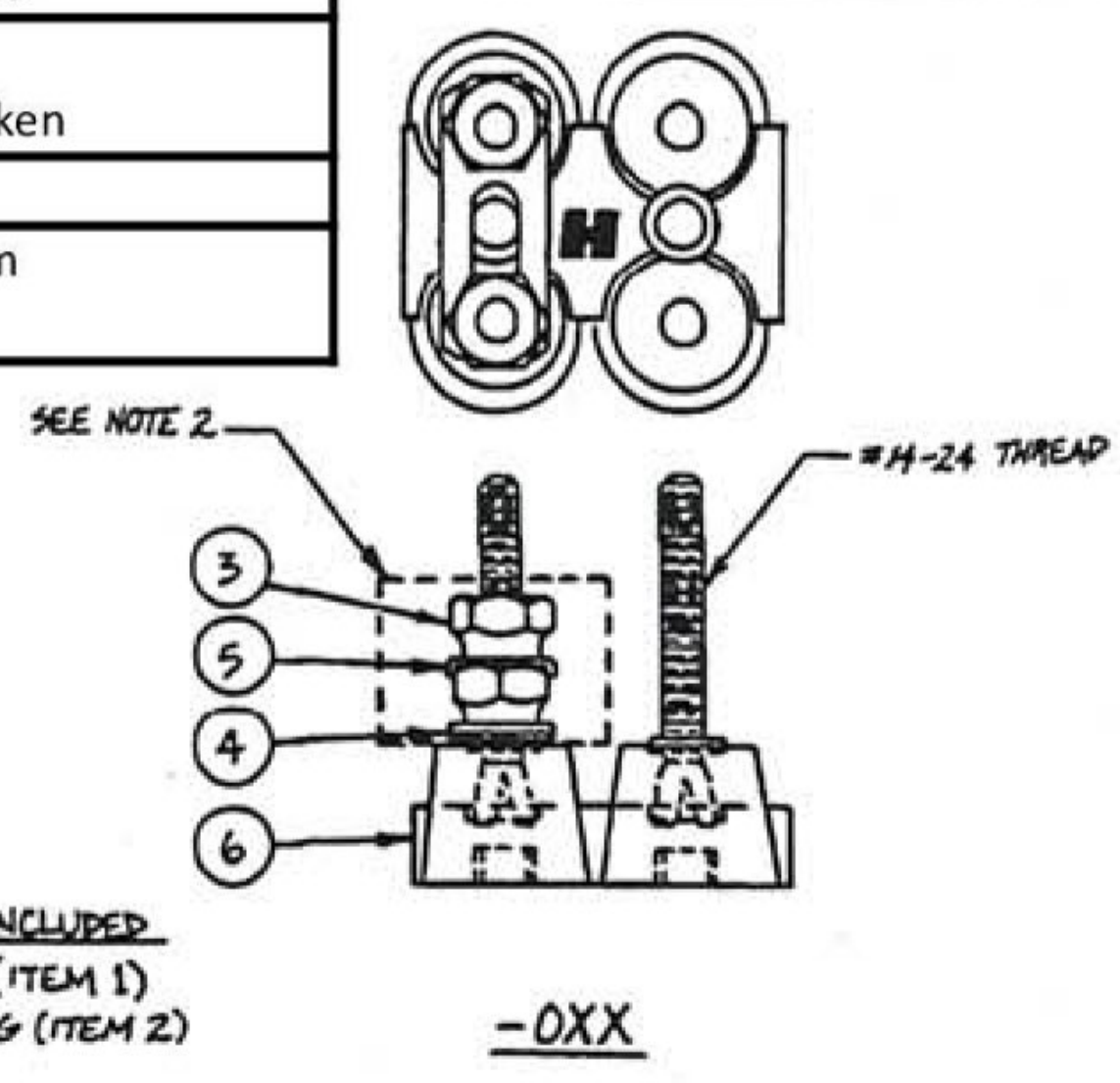


This Drawing, which contains proprietary information is the property of General Electric Company. It shall not be reproduced in any manner nor disclosed to third parties without written permission of General Electric Company

TranSystems Vermont Agency of Transportation Lyndon STPG SGNL(48) Project	
<input checked="" type="checkbox"/>	Approved Fabrication/Installation may be undertaken
<input type="checkbox"/>	Approved as Corrected Approval provided comments are incorporated
<input type="checkbox"/>	Correct, Revise and Resubmit Fabrication/Installation MAY NOT be undertaken
<input type="checkbox"/>	No Action Taken Review / approval does not relieve the contractor from complying with all the requirements of the contract



HARMON DASH NO.				NO. OF POSTS
-000	-100	-200	-300	12 (2X6)
-001	-101	-201	-301	2 (2X1)
-002	-102	-202	-302	4 (2X2)
-003	-103	-203	-303	6 (2X3)
-004	-104	-204	-304	8 (2X4)
-005	-105	-205	-305	10 (2X5)

- NOTES:
- USE THE TABLE TO SELECT THE CORRECT HPN WITH RESPECT TO THE DESIRED NUMBER OF POSTS.
 - THE HARDWARE STACKUPS ARE TYPICAL FOR EACH POST AND ARE SHOWN FOR REFERENCE. THE HARDWARE SHOWN ENCLOSED IN THE DASHED BOXES SHOULD BE PACKED IN THE 4" X 6" PLASTIC BAG, ITEM 2 AND TIED TO A POST OF THE TERMINAL BLOCK WITH THE CABLE TIE, ITEM 1. THE CUSTOMER WILL ASSEMBLE AS NEEDED.
 - THE HARDWARE STACKUP SHOWN IS TYPICAL FOR EACH PAIR OF POSTS. INSTALL ONE FLAT WASHER, ITEM 4 AND ONE CLAMP NUT, ITEM 5 ON TO EACH POST. TORQUE EACH NUT TO 60 IN. LBS. THE BALANCE OF THE HARDWARE SHOWN ENCLOSED IN THE DASHED BOXES SHOULD BE PACKED IN THE 4" X 6" PLASTIC BAG, ITEM 2 AND TIED TO A POST OF THE TERMINAL BLOCK WITH THE CABLE TIE, ITEM 1. THE CUSTOMER WILL ASSEMBLE AS NEEDED.
 - THE HARDWARE STACK-UP IS TYPICAL FOR EACH PAIR OF POST. INSTALL ONE FLAT WASHER (DIN 4) AND ONE CLAMP NUT (DIN 5) ON EACH POST. TIGHTEN NUTS TO 60 INCH POUNDS, ± 5%.

ENGINEER	WAYNE WOMACK		DRAWN BY		MARK KRAUSE		DATE		7/24/96										
DATE	9/98	DATE	7/96	MATERIAL	TOLERANCES UNLESS NOTED OTHERWISE		TITLE		ASSY TERMINAL STRIP DOUBLE ROW										
REV	FC0	REV	FB0	DECIMALS	XX± .01	FRACTIONS	± 1/16	ANGLES	± 1°	FILE TYPE	AUTOCAD	DRAWING NO.	250094-XXX	SHEET	1	OF	1	SIZE	B

