



GENERAL RAILWAY SIGNAL CO. ROCHESTER N.Y.

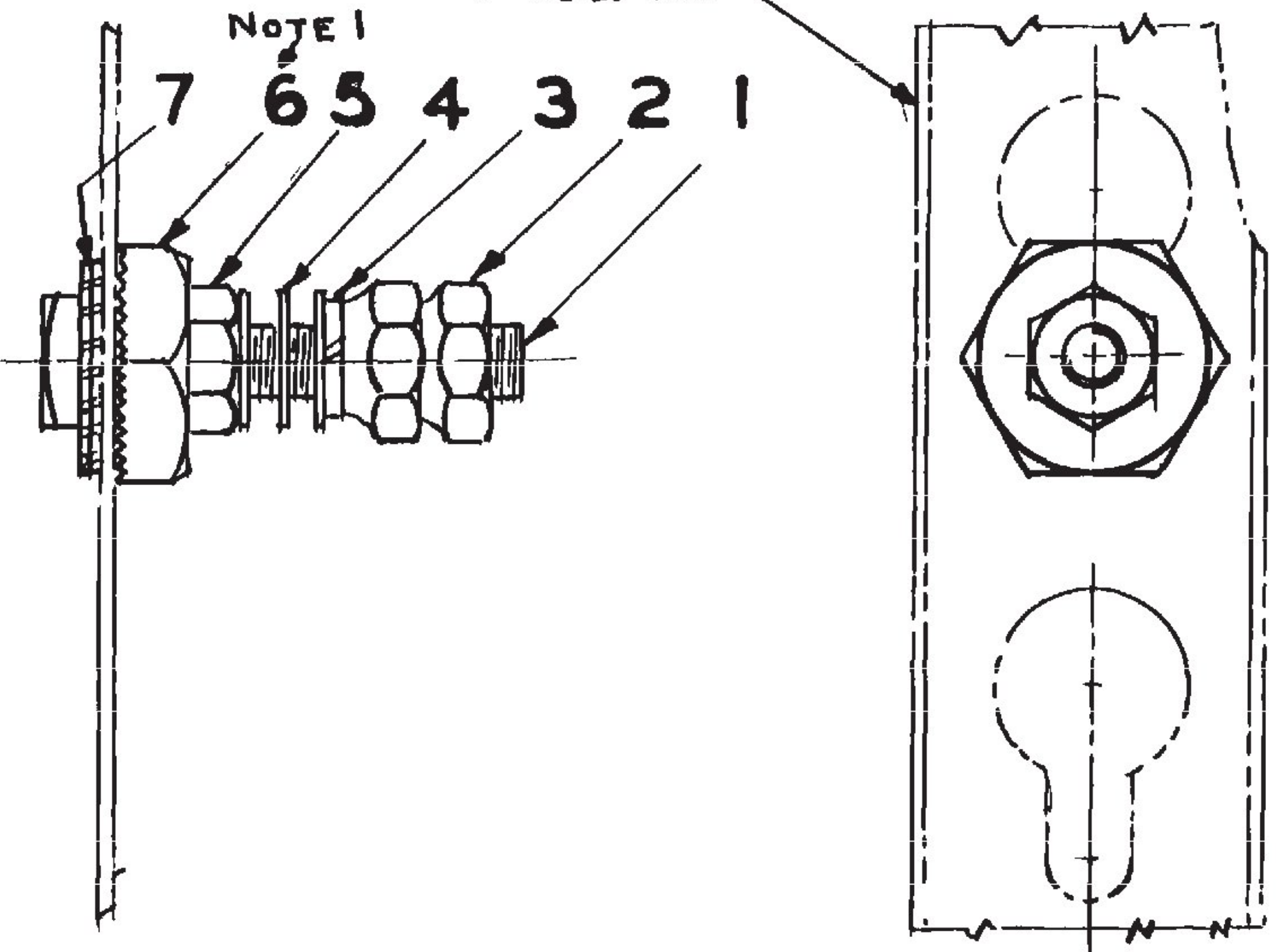
INDEX NAME	<b>GROUND POST ASSEM.</b>		DWG NO	<b>58277</b>
KIND	5/16-18 GROUND POST ASSEM. WITH SELF SCRAPING BASE NUT			
DESC				
LISTED ON DWG	MAJOR SUB ASSY	DWG NO		
DEVICES USED ON	ADJUSTABLE INSTRUMENT CASE		DWG NO 58271 KEY NO	
SUPERSEDES 58277 (REV 5) DATED 11-30-54				

NOTE 1: HEX NUT REF 6 TO BE TIGHTENED ENOUGH TO REMOVE PAINT FROM OUTER SURFACE OF CHANNEL THUS PROVIDING A GOOD ELECTRICAL GROUND

NOTE 2: PLACE GROUND POST PARTS IN LARGE COIN ENVELOPE (TAG) AND SEAL BY STAPLING (PARTS NOT TO BE ASSEMBLED.)

USE 46989-7 UNTIL STOCK IS EXHAUSTED

SIDE CHANNEL 56118-119 & -120



VOID

TOLERANCES UNLESS OTHERWISE SPECIFIED				REVISIONS R NO AND DATE OF DRAWING		REV. NO	APP LB
FRACTIONS ±		DECIMALS ±		ANGLES ±			
GR-2	GR-1	DRAW. NO	REF	NAME			
	1	353	1	SCREW 5/16-18 X 1 1/8 SQ HD BRZ.			
	2	42843-9	2	NUT 5/16-18 X 1/2 HEX 5/16 TH			
	1	0623-4	3	WASHER 5/16 SPR LOCK BRZ			
	3	1225-21	4	WASHER 21/64 ID 5/8 OD .040 TH			
	1	46989-11	5	NUT 5/16-18 X 1/2 HEX 3/16 TH			
	1	18466	6	NUT 5/16-18 X 1/2 HEX 3/16 TH			
	2	53029-50	7	WASHER 5/16 SHAKEPROOF			
	1	55085-193		TAG (ENVELOPE)		SEE NOTE 2	

RETRACTED. REF 2 WAS 42843-4 REF 5 WAS 46989-7 R-A2098 12-7-56

**TranSystems** Vermont Agency of Transportation  
Lyndon STPG SGNL(48) Project

<input checked="" type="checkbox"/>	Approved
	Fabrication/Installation may be undertaken
<input type="checkbox"/>	Approved as Corrected
	Approval provided comments are incorporated
<input type="checkbox"/>	Correct, Revise and Resubmit
	Fabrication/Installation MAY NOT be undertaken
<input type="checkbox"/>	No Action Taken

Review / approval does not relieve the contractor from complying with all the requirements of the contract

NOTICE OF CONFIDENTIAL INFORMATION Information contained herein is confidential and is the property of the General Railway Signal Company. Where furnished with a proposal the recipient shall use it solely to evaluate the proposal. Where furnished to a customer it shall be used solely for purposes of inspection, installation or maintenance. Where furnished to a supplier it shall be used solely in the performance of the contract. The information shall not be used or disclosed by the recipient for any other purpose whatsoever.

CITY PRICE QUANTIFIED 4-8

PRD	TR F H H.	CHKD	H.H. 12/7/52
ENGR	J.S.M. 12/1/52	LAB	
ENGR	J.S.M. 12/1/52	CH DR	E.Y.S.
ENGR		CH ENGR	H.H. 12/1/52

H-5

10 X 14