

REMOVAL OF EXISTING PAVEMENT MARKINGS
 93+00 TO 94+40 RT (SOLID WHITE)
 93+33 TO 94+62 LT & RT (DOUBLE SOLID) (ISLAND)
 93+45 TO 94+80 LT (SOLID WHITE)
 93+58 TO 94+52 LT & RT (SOLID DIAGONALS)
 93+92 RT (STOP BAR)

DURABLE 4 INCH WHITE LINE (OPTION BID ITEM)
 93+00 TO 94+40 RT (SOLID)
 93+45 TO 94+80 LT (SOLID)
 94+52 TO 200+58 RT (SOLID) (TH #2)
 94+95 TO 98+85 LT (SOLID)
 95+64 TO 98+85 RT (SOLID)
 96+05 TO 97+05 LT (SOLID) (LANE LINE)
 97+05 TO 98+75 LT (DOTTED)
 200+50 LT TO 95+64 RT (SOLID) (TH #2)

DURABLE 4 INCH YELLOW LINE (OPTION BID ITEM)
 93+33 TO 94+79 LT & RT (DOUBLE SOLID) (ISLAND)
 96+05 RT TO 98+85 RT (DOUBLE SOLID)
 200+37 TO 201+00 CL (DOUBLE SOLID)

DURABLE 8 INCH YELLOW LINE (OPTION BID ITEM)
 93+58 TO 94+52 LT & RT (SOLID DIAGONALS)

DURABLE LETTER OR SYMBOL (OPTION BID ITEM)
 96+14 CL (LEFT TURN ARROW)
 96+57 CL ("ONLY")
 97+02 CL (LEFT TURN ARROW)

DURABLE 24 INCH STOP BAR (OPTION BID ITEM)
 93+48 RT
 96+05 LT & RT
 200+37 LT (TH #2)

REMOVING SIGNS
 AS SHOWN - 3

ERECTING SALVAGED SIGNS
 AS SHOWN - 1

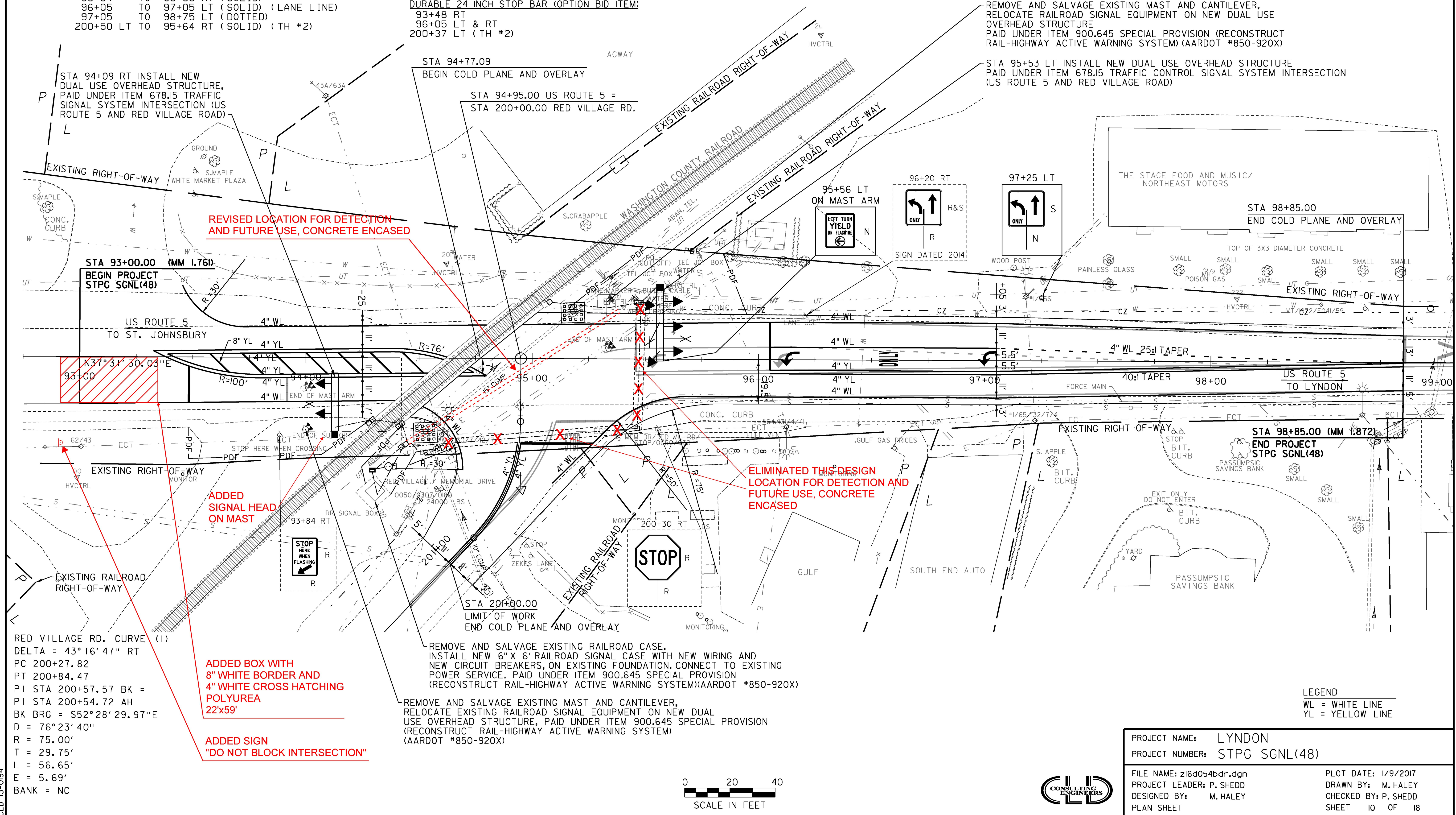
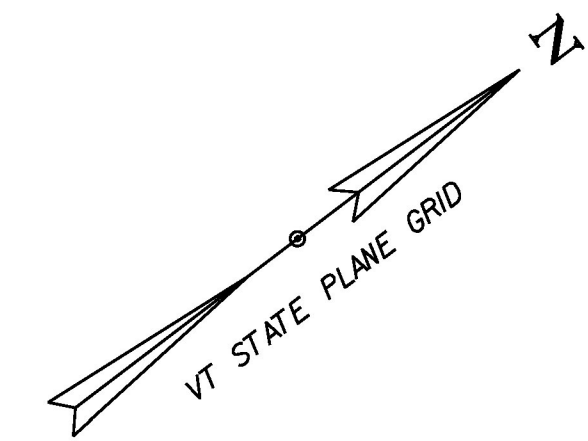
SQUARE TUBE SIGN POST AND ANCHOR
 97+25 LT

TRAFFIC SIGNS, TYPE A
 95+56 LT (ON MAST ARM)

PROJECT DEMARCATION FENCE

93+48 TO 94+28 RT
 94+26 TO 94+42 RT
 94+37 TO 94+66 RT
 95+16 TO 95+95 LT

INLET PROTECTION DEVICE, TYPE I
 94+52 RT
 95+18 LT



RED VILLAGE RD. CURVE (1)
 DELTA = 43° 16' 47" RT
 PC 200+27.82
 PT 200+84.47
 PI STA 200+57.57 BK =
 PI STA 200+54.72 AH
 BK BRG = S52° 28' 29.97"E
 D = 76° 23' 40"
 R = 75.00'
 T = 29.75'
 L = 56.65'
 E = 5.69'
 BANK = NC

ADDED BOX WITH 8" WHITE BORDER AND 4" WHITE CROSS HATCHING POLYUREA 22'x59'

ADDED SIGN "DO NOT BLOCK INTERSECTION"

REMOVE AND SALVAGE EXISTING RAILROAD CASE. INSTALL NEW 6" X 6" RAILROAD SIGNAL CASE WITH NEW WIRING AND NEW CIRCUIT BREAKERS, ON EXISTING FOUNDATION. CONNECT TO EXISTING POWER SERVICE. PAID UNDER ITEM 900.645 SPECIAL PROVISION (RECONSTRUCT RAIL-HIGHWAY ACTIVE WARNING SYSTEM)(AARDOT #850-920X)

REMOVE AND SALVAGE EXISTING MAST AND CANTILEVER, RELOCATE EXISTING RAILROAD SIGNAL EQUIPMENT ON NEW DUAL USE OVERHEAD STRUCTURE, PAID UNDER ITEM 900.645 SPECIAL PROVISION (RECONSTRUCT RAIL-HIGHWAY ACTIVE WARNING SYSTEM)(AARDOT #850-920X)



LEGEND
 WL = WHITE LINE
 YL = YELLOW LINE

PROJECT NAME: LYNDON
 PROJECT NUMBER: STPG SGNL(48)

FILE NAME: z16d054bdr.dgn
 PROJECT LEADER: P. SHEDD
 DESIGNED BY: M. HALEY
 PLAN SHEET

PLOT DATE: 1/9/2017
 DRAWN BY: M. HALEY
 CHECKED BY: P. SHEDD
 SHEET 10 OF 18

