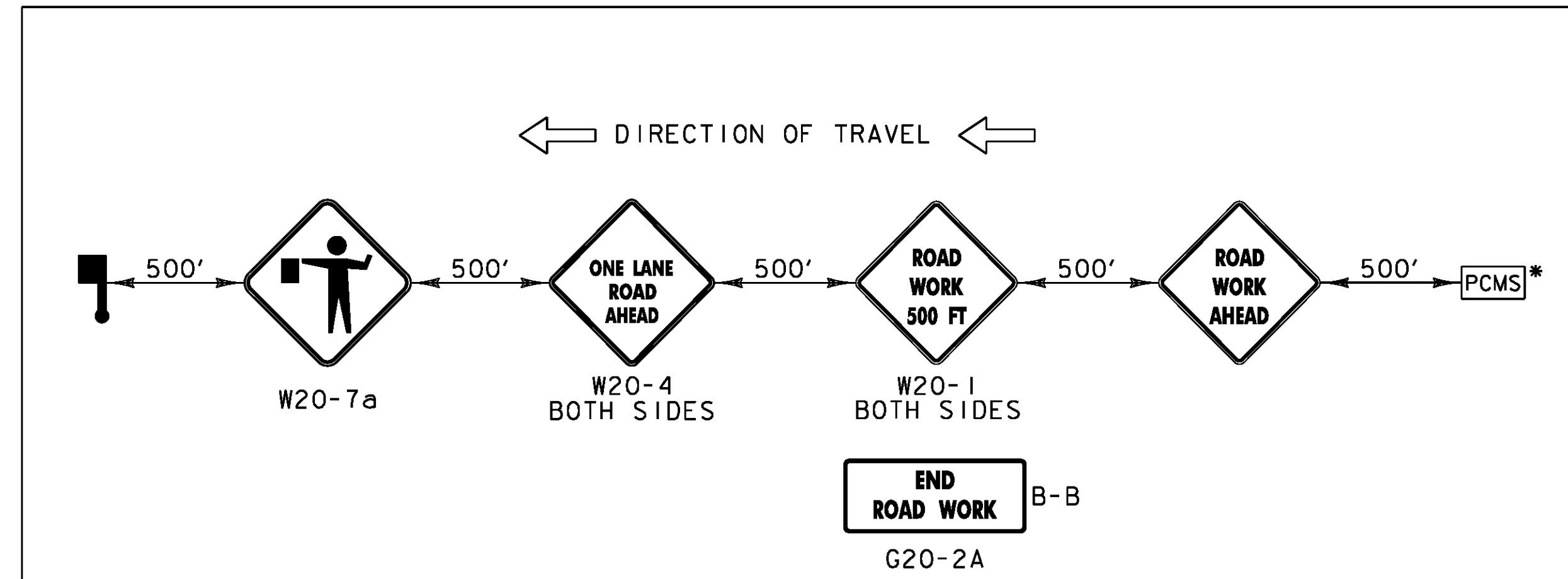


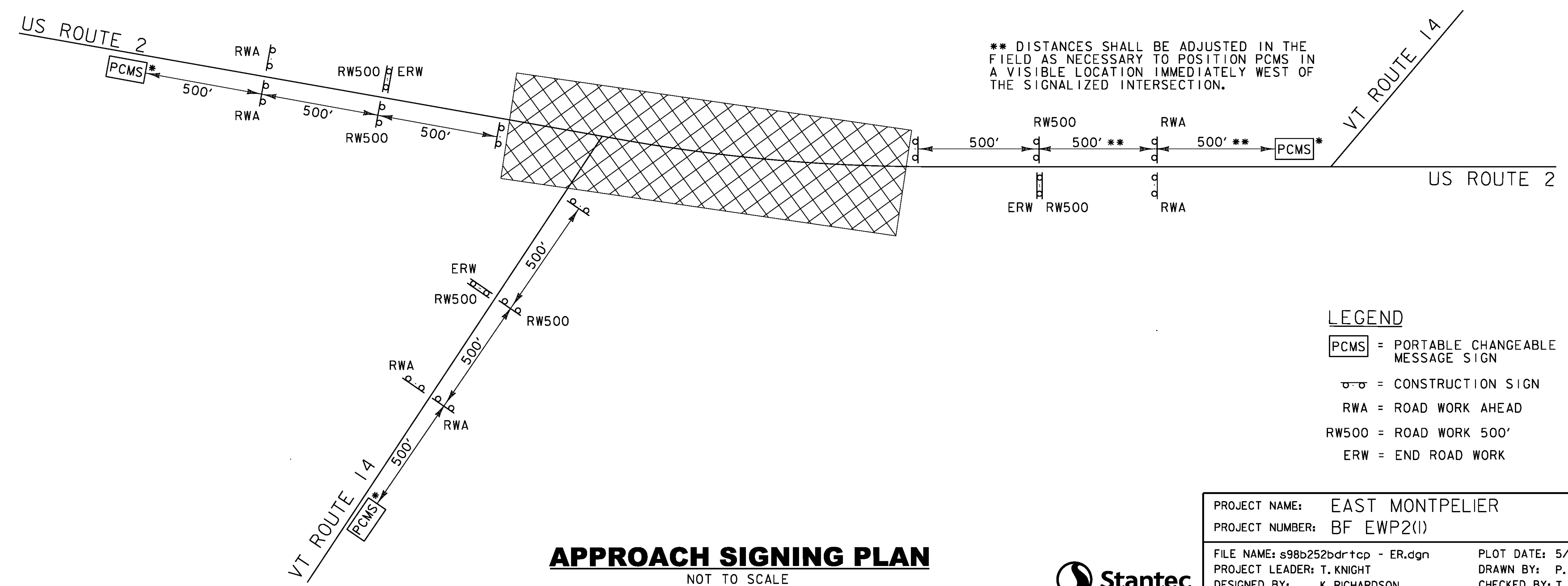
APPROACH SIGNING PACKAGE

*THE PORTABLE CHANGEABLE MESSAGE SIGN (PCMS) SHALL BE USED AT THE DISCRETION OF THE ENGINEER. THE PCMS SHALL BE USED IN ACCORDANCE WITH SECTION 6F.60 OF THE MUTCD.



FLAGGER APPROACH SIGNING PACKAGE

*THE PORTABLE CHANGEABLE MESSAGE SIGN (PCMS) SHALL BE USED AT THE DISCRETION OF THE ENGINEER. THE PCMS SHALL BE USED IN ACCORDANCE WITH SECTION 6F.60 OF THE MUTCD.



APPROACH SIGNING PLAN
NOT TO SCALE

LEGEND

- PCMS = PORTABLE CHANGEABLE MESSAGE SIGN
- ⚠ = CONSTRUCTION SIGN
- RWA = ROAD WORK AHEAD
- RW500 = ROAD WORK 500'
- ERW = END ROAD WORK

PROJECT NAME:	EAST MONTPELIER
PROJECT NUMBER:	BF EWP2(1)
FILE NAME:	s98b252bdrtcp - ER.dgn
PROJECT LEADER:	T. KNIGHT
DESIGNED BY:	K. RICHARDSON
APPROACH SIGNING PLAN	
PLOT DATE:	5/26/2016
DRAWN BY:	P. ARMATA
CHECKED BY:	T. KNIGHT
SHEET	36 OF 42

