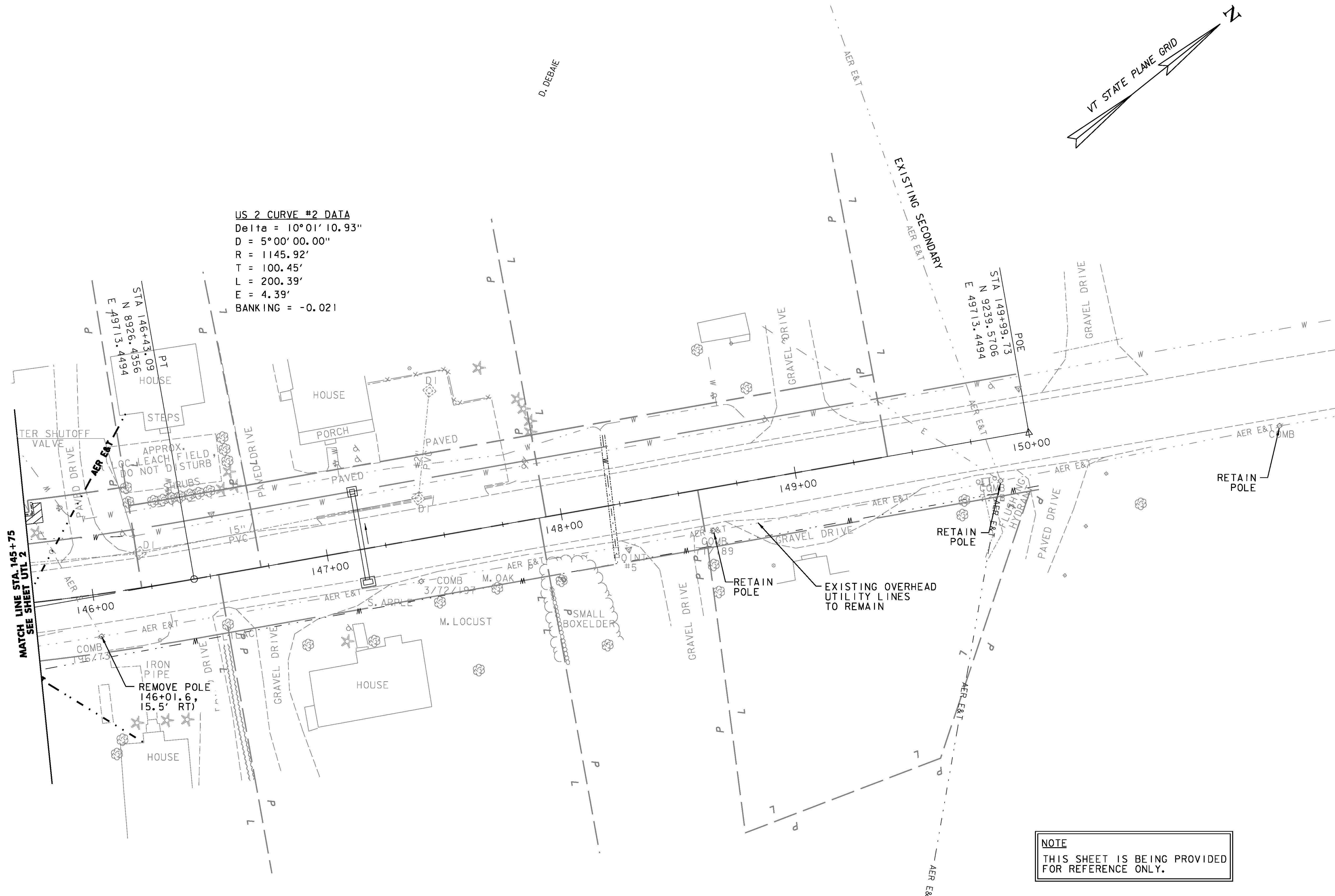


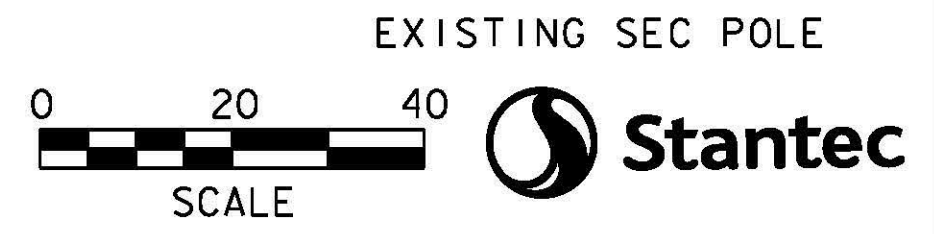
**US 2 CURVE #2 DATA**  
 Delta = 10°01' 10.93"  
 D = 5°00' 00.00"  
 R = 1145.92'  
 T = 100.45'  
 L = 200.39'  
 E = 4.39'  
 BANKING = -0.021



MATCH LINE STA. 145+75  
 SEE SHEET UTL 2

REMOVE POLE  
 146+01.6,  
 15.5' RT)

**NOTE**  
 THIS SHEET IS BEING PROVIDED  
 FOR REFERENCE ONLY.



PROJECT NAME:	EAST MONTPELIER
PROJECT NUMBER:	BF EWP2(1)
FILE NAME:	28_Utility plans - ER.dgn
PROJECT LEADER:	T. KNIGHT
DESIGNED BY:	K. RICHARDSON
UTILITIES PLAN UTL 4	
PLOT DATE:	5/26/2016
DRAWN BY:	E. ALLING
CHECKED BY:	G. GOYETTE
SHEET	17 OF 42