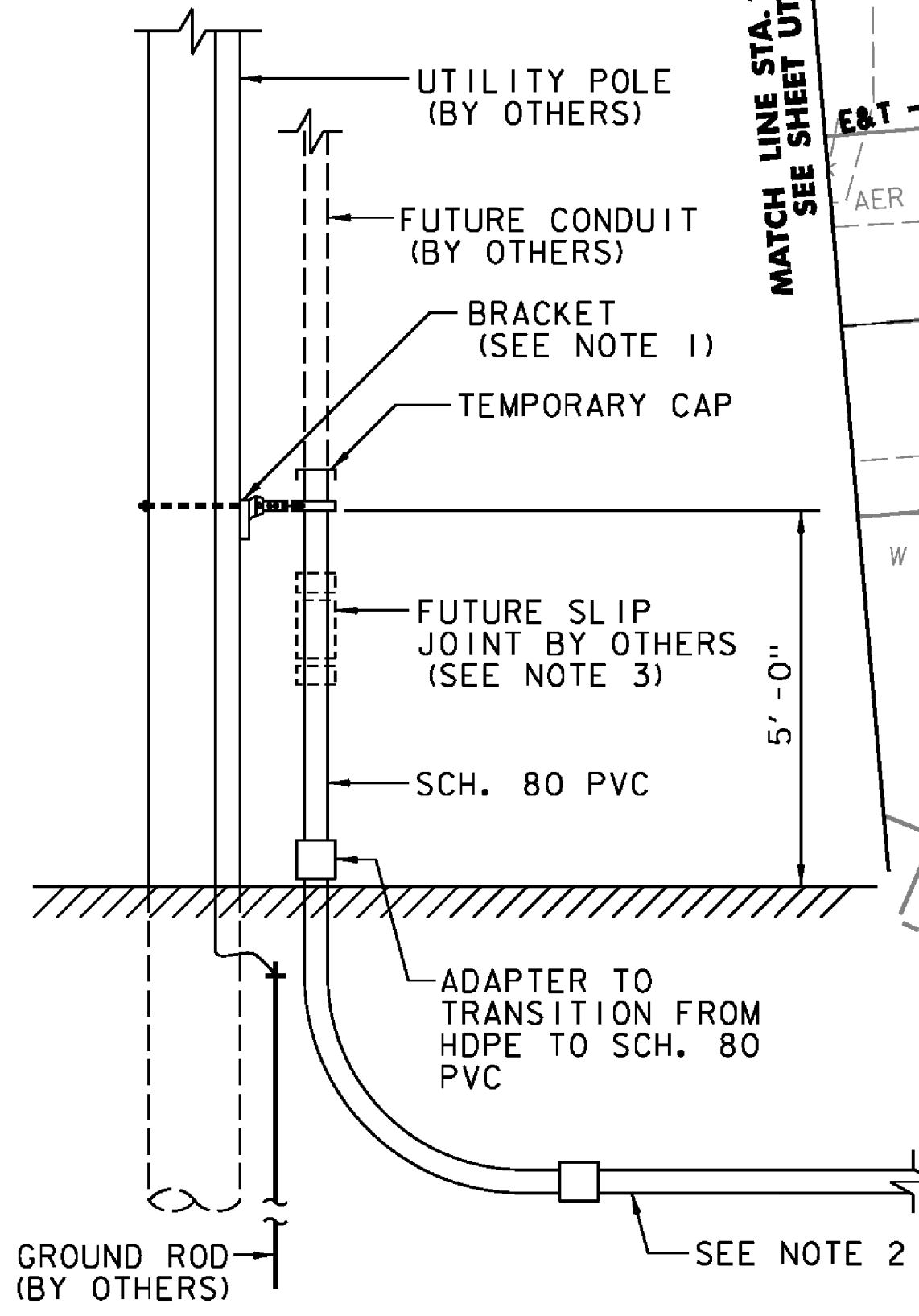
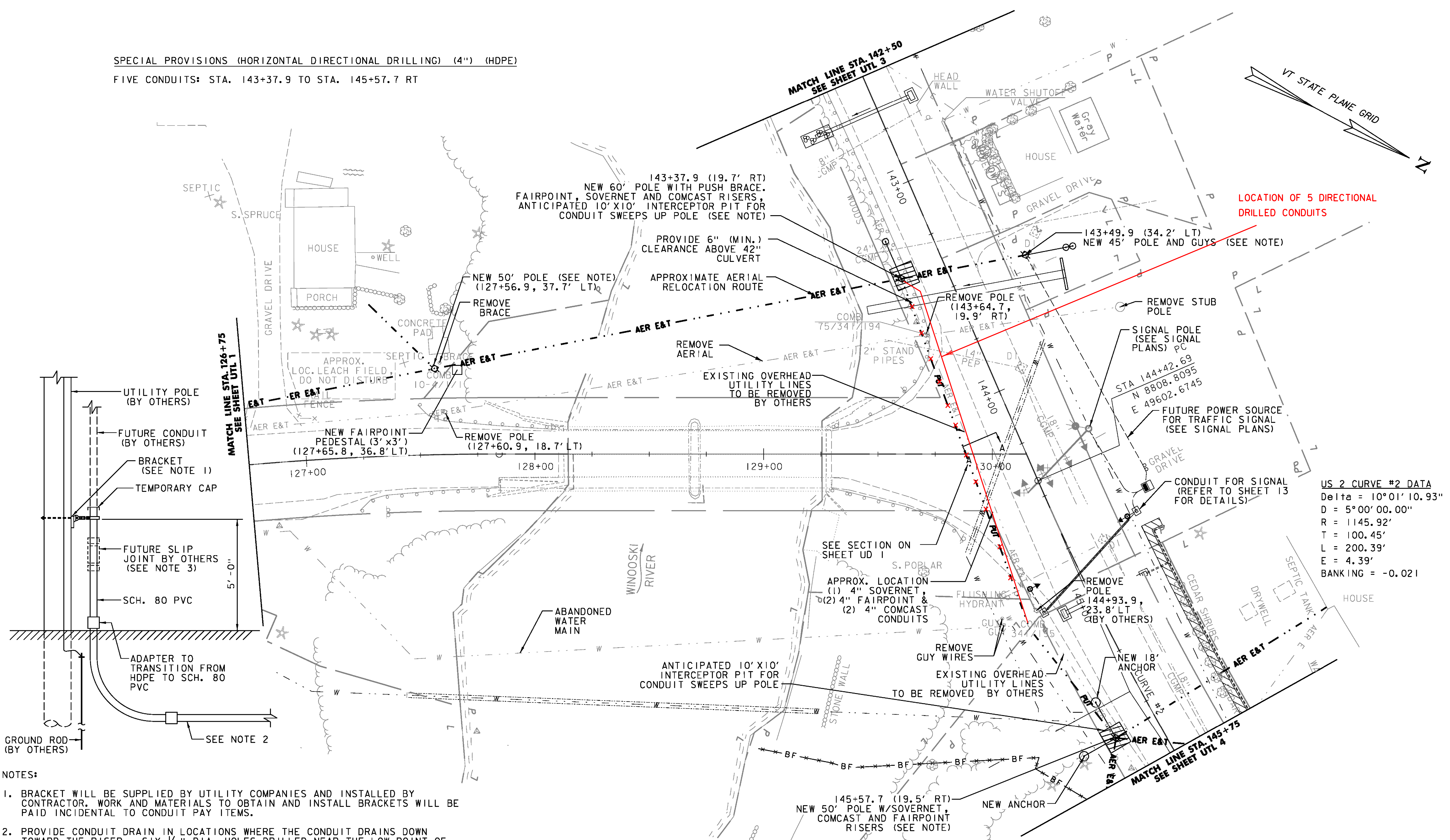


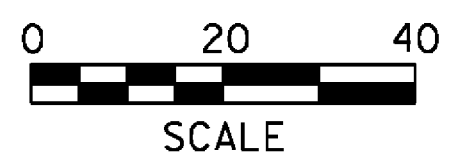
SPECIAL PROVISIONS (HORIZONTAL DIRECTIONAL DRILLING) (4") (HDPE)
 FIVE CONDUITS: STA. 143+37.9 TO STA. 145+57.7 RT



- NOTES:
- BRACKET WILL BE SUPPLIED BY UTILITY COMPANIES AND INSTALLED BY CONTRACTOR. WORK AND MATERIALS TO OBTAIN AND INSTALL BRACKETS WILL BE PAID INCIDENTAL TO CONDUIT PAY ITEMS.
 - PROVIDE CONDUIT DRAIN IN LOCATIONS WHERE THE CONDUIT DRAINS DOWN TOWARD THE RISER. SIX-1/2" DIA. HOLES DRILLED NEAR THE LOW POINT OF THE CONDUIT, WRAP WITH GEOTEXTILE, AND BACK FILL WITH 3/4" CRUSHED STONE TO THE SATISFACTION OF THE UTILITY COMPANY INSPECTOR. WORK AND MATERIALS TO COMPLETE CONDUIT DRAIN WILL BE PAID INCIDENTAL TO CONDUIT PAY ITEMS.
 - CONTRACTOR TO INSTALL SCH. 80 PVC UP TO THE FIRST BRACKET AND CAP FOR FUTURE CONNECTION. THIS WILL STABILIZE THE CONDUIT FOR BACK FILLING. SLIP JOINT (IF REQUIRED) WILL BE PROVIDED AND INSTALLED BY OTHERS.

CABLE RISER INSTALLATION DETAIL
 NOT TO SCALE

NOTE
 WORK TO BE DONE WITH THIS PROJECT IS LIMITED TO THE INSTALLATION OF UNDERGROUND CONDUIT. ALL OTHER WORK REGARDING UTILITY POLES, TRAFFIC SIGNAL SYSTEM, AERIAL LINES, GUY WIRES, PULLING CONDUCTOR WIRES, ETC. IS TO BE DONE BY OTHERS. CONTRACTOR SHALL COORDINATE CLOSELY WITH THE UTILITY COMPANIES TO INSTALL THE CONDUITS PER UTILITY COMPANY SPECIFICATIONS & INSPECTION REQUIREMENTS. POLE HEIGHTS SHOWN WERE CALCULATED AND PROVIDED BY FAIRPOINT.



PROJECT NAME:	EAST MONTPELIER	PLOT DATE:	6/14/2016
PROJECT NUMBER:	BF EWP2(I)	DRAWN BY:	E. ALLING
FILE NAME:	28_Utility plans - ER.dgn	DESIGNED BY:	K. RICHARDSON
PROJECT LEADER:	T. KNIGHT	UTILITIES PLAN UTL 2	CHECKED BY: G. GOYETTE
			SHEET 15 OF 42

US 2 CURVE #2 DATA
 Delta = 10°01'10.93"
 D = 5°00'00.00"
 R = 1145.92'
 T = 100.45'
 L = 200.39'
 E = 4.39'
 BANKING = -0.021