

604.18 - NEW 4' X 4' REINFORCED CONCRETE DROP INLET

15 STA 147+18 LT

FUTURE 4' X 4' REINFORCED CONCRETE DROP INLET

* 13 STA 146+03 LT

* 17 STA 147+55 LT

* 17A STA 147+70 LT

FUTURE UNDERDRAIN FLUSHING BASIN (SEE STANDARD D-30)

* U20A STA 147+70 LT

* U22 STA 147+90 RT

604.18 - NEW 6' X 4' REINFORCED CONCRETE DROP INLET

15A STA 147+18 RT

601.0817 - NEW 18" RCP CLASS V PIPE

15A STA 147+18 LT - RT

FUTURE 18" DIA - OPTION PIPE PCCSP, CAAP, CPEP, RCP, CPEP (SL)

* 13 STA 145+00 LT - 146+03 LT

* 15 STA 146+03 LT - 147+18 LT

* 17 STA 147+18 LT - 147+70 LT

* 17A STA 147+54 LT - 147+70 LT

EXISTING DROP INLET TO BE REMOVED IN FUTURE

* 14 STA 146+22 LT

* 16 STA 147+42 LT

* 18 STA 147+55 LT

EXISTING PIPE TO BE REMOVED IN FUTURE

* 14 STA 144+78 LT - 146+22 LT

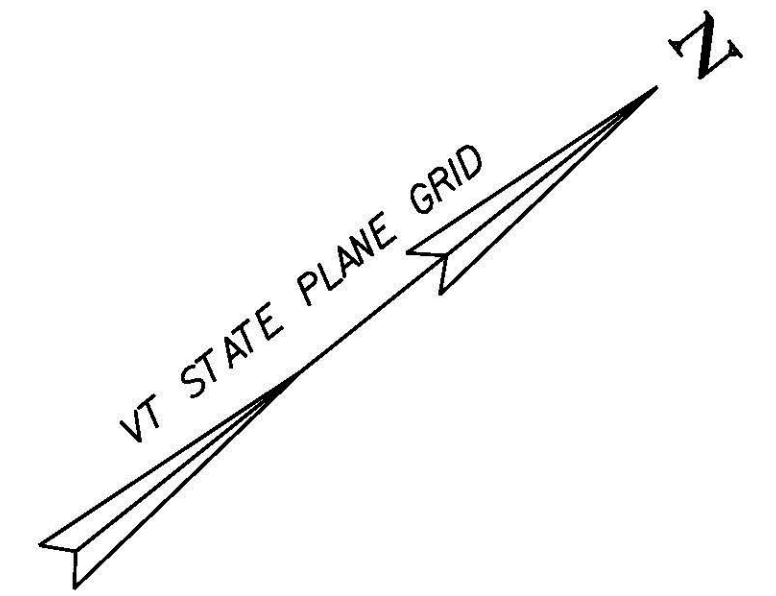
* 16 STA 146+22 LT - 147+42 LT

* 18 STA 147+42 LT - 147+55 LT

FUTURE 6" UNDERDRAIN PIPE

* U20A STA 145+75 LT - 147+70 LT

* U22 STA 145+75 RT - 147+90 RT

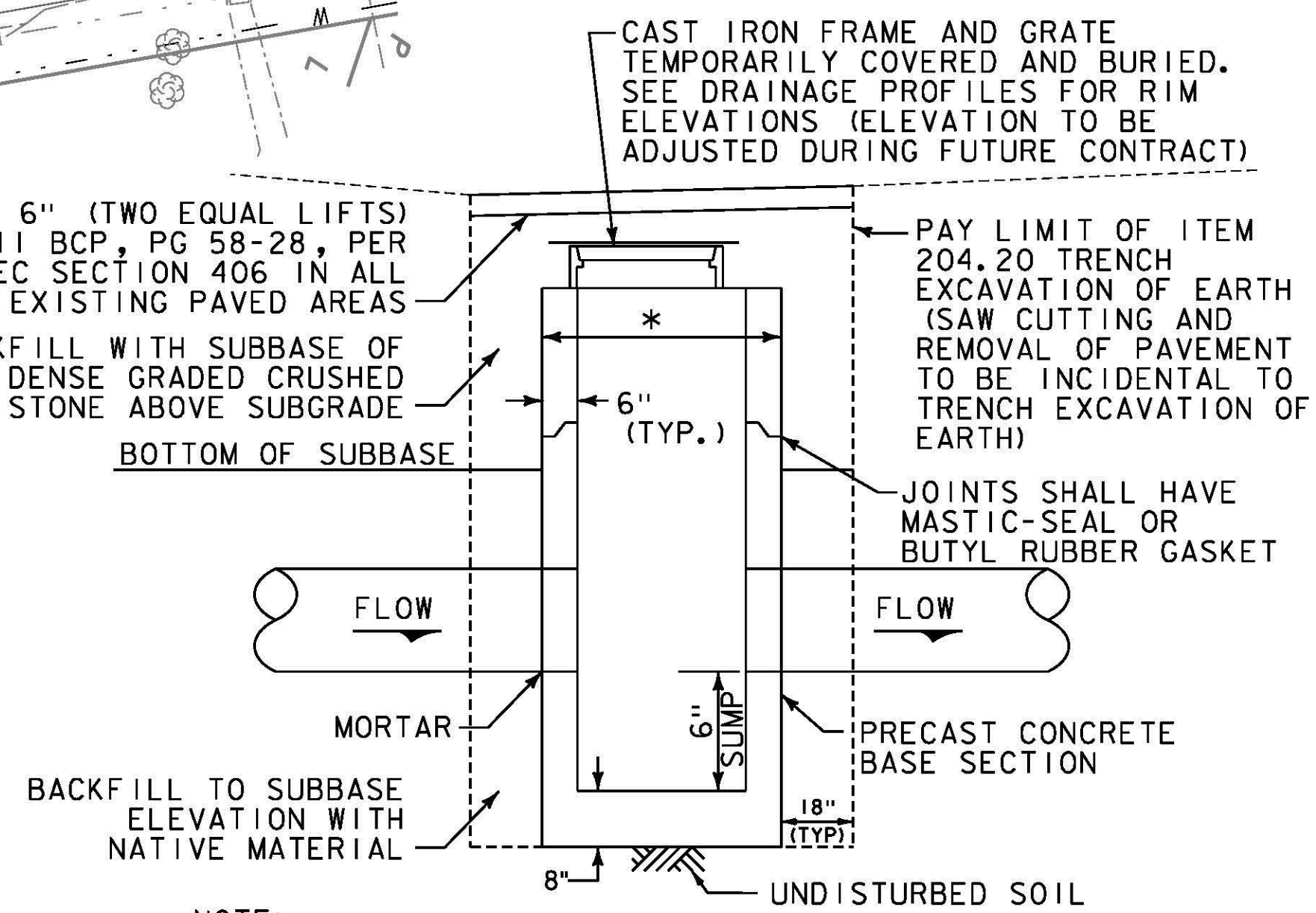
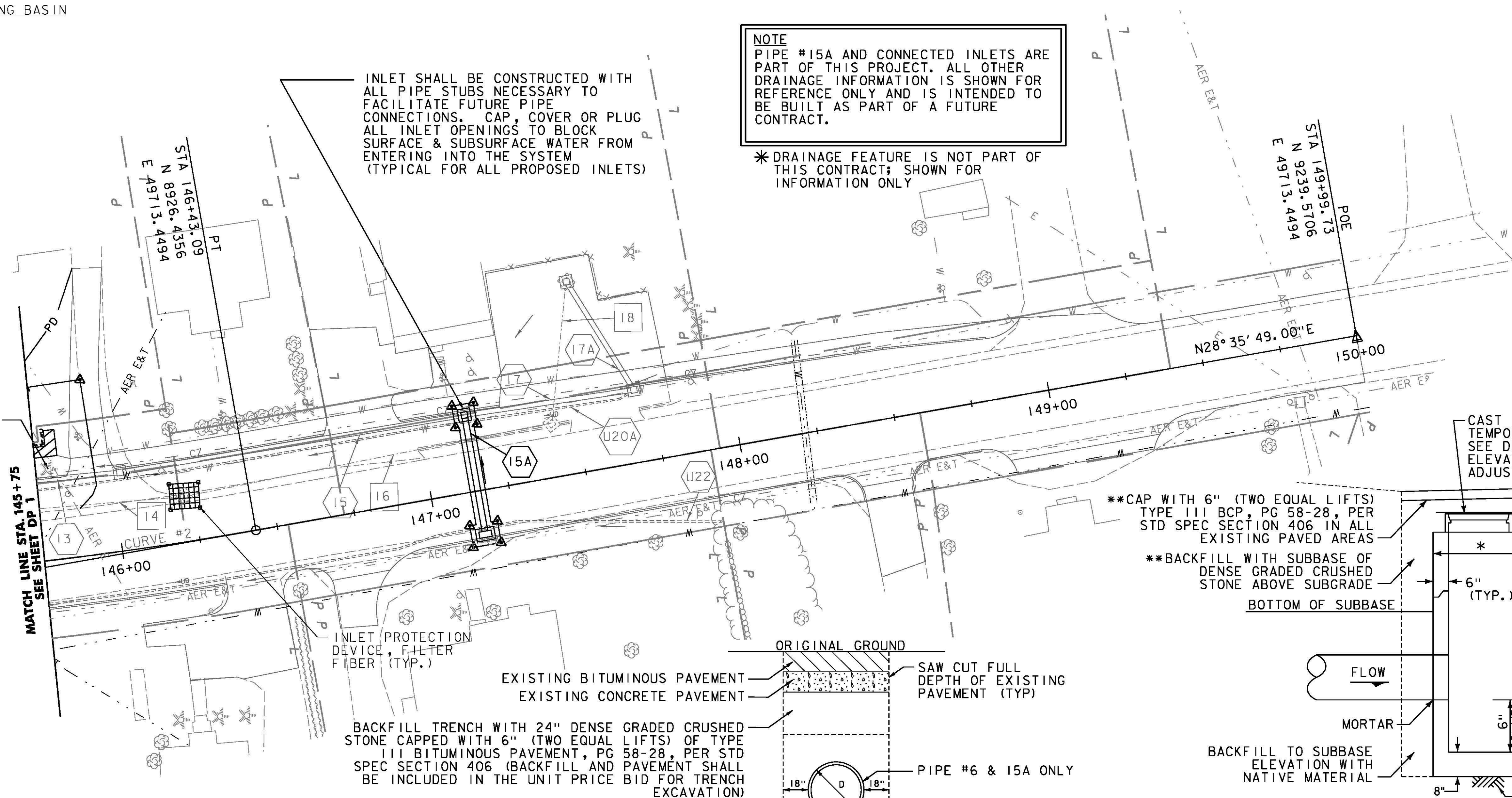


NOTE
PIPE #15A AND CONNECTED INLETS ARE PART OF THIS PROJECT. ALL OTHER DRAINAGE INFORMATION IS SHOWN FOR REFERENCE ONLY AND IS INTENDED TO BE BUILT AS PART OF A FUTURE CONTRACT.

* DRAINAGE FEATURE IS NOT PART OF THIS CONTRACT; SHOWN FOR INFORMATION ONLY

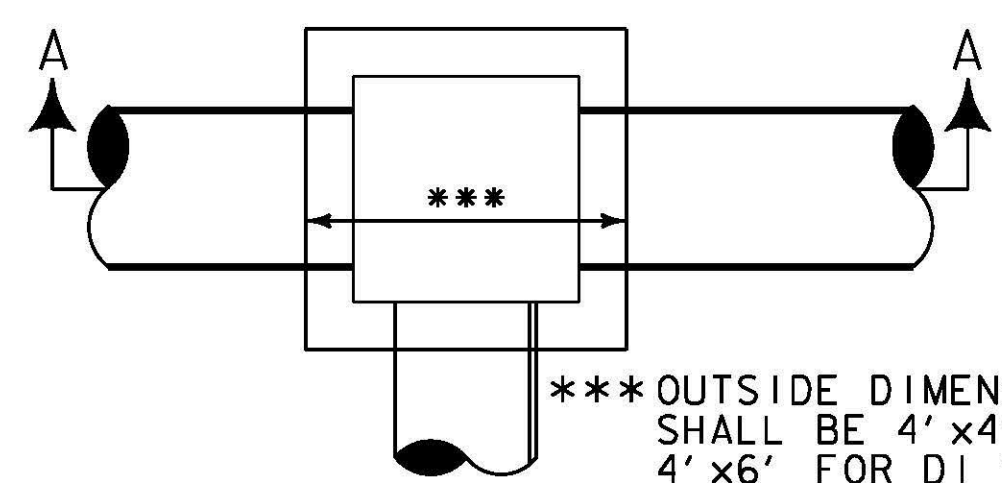
INLET SHALL BE CONSTRUCTED WITH ALL PIPE STUBS NECESSARY TO FACILITATE FUTURE PIPE CONNECTIONS. CAP, COVER OR PLUG ALL INLET OPENINGS TO BLOCK SURFACE & SUBSURFACE WATER FROM ENTERING INTO THE SYSTEM (TYPICAL FOR ALL PROPOSED INLETS)

TREE TO BE REMOVED (THIS TREE IS NOT CONSIDERED HABITAT FOR THE NORTHERN LONG EARED BAT AND IS NOT SUBJECT TO TIME OF YEAR RESTRICTIONS ON CLEARING)



NOTE:
1. REFERENCE VTRANS STANDARDS D-6, D-8, AND D-9 FOR ADDITIONAL DETAILS AND SPECIFICATIONS.

TYPICAL PRECAST DROP INLET IN ROADWAY (SECTION A-A)
NOT TO SCALE

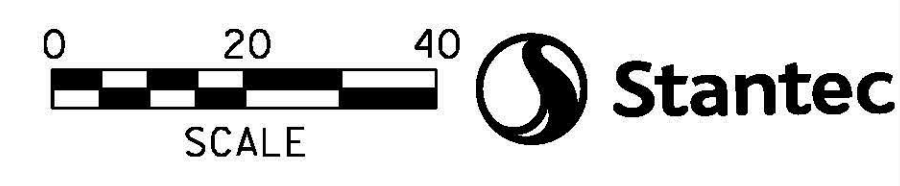


PLAN VIEW FOR PRECAST REINFORCED CONCRETE DROP INLET IN DITCHES & ROADWAY
NOT TO SCALE

STORM DRAIN OPEN CUT TRENCH DETAIL
NOT TO SCALE

** BACKFILL, PAVEMENT AND REMOVAL OF EXISTING CONCRETE AND BITUMINOUS PAVEMENT SHALL BE INCLUDED IN THE UNIT PRICE BID FOR ITEM 204.20 TRENCH EXCAVATION OF EARTH

- NOTES:**
- FINAL LOCATION AND ELEVATIONS OF DRAINAGE ITEMS MAY BE ADJUSTED IN THE FIELD AS DEEMED NECESSARY BY THE RESIDENT ENGINEER.
 - SEE DRAINAGE PROFILES FOR RIM AND INVERT ELEVATIONS OF DRAINAGE PIPES AND STRUCTURES.



PROJECT NAME:	EAST MONTPELIER
PROJECT NUMBER:	BF EWP2(I)
FILE NAME: ...18_Drainage plans - ER.dgn	PLOT DATE: 5/26/2016
PROJECT LEADER: T. KNIGHT	DRAWN BY: E. ALLING
DESIGNED BY: K. RICHARDSON	CHECKED BY: G. GOYETTE
GENERAL PLAN - GP 2	SHEET 9 OF 42