

**604.18 - NEW 4' X 4' REINFORCED CONCRETE DROP INLET**

- (12) STA 145+00 LT
- FUTURE - 4' X 4' REINFORCED CONCRETE DROP INLET
- (18) STA 129+83 RT
- (5B) STA 127+40 RT
- (5) STA 127+40 RT
- DROP INLET TO BE REMOVED IN FUTURE
- (24) STA 143+43 LT
- (9) STA 143+94 LT
- (11) STA 144+78 LT

**EXISTING PIPES TO BE REMOVED IN FUTURE**

- (7) STA 142+74 LT - 142+79 RT (WITH HEADWALL)
- (24) STA 143+21 RT - 143+41 LT
- (9) STA 143+59 RT - 143+94 LT
- (11) STA 143+94 LT - 144+78 LT
- (14) STA 144+78 LT - 146+22 LT

**FUTURE 6" UNDERDRAIN PIPE**

- (U19) STA 126+75 RT - 127+40 RT
- (U20) STA 142+66 LT - 145+00 LT
- (U20A) STA 145+00 LT - 145+75 LT
- (U21) NOT USED
- (U22) STA 145+00 RT - 145+75 RT

**SAND FILTER (PAID AS SPECIAL PROVISION (INFILTRATION TRENCH & FUTURE SAND FILTER))**

- (22) STA 126+75 RT - 126+97 RT

**FUTURE STONE FILL, TYPE 1**

- STA 127+28 - 127+65 RT
- STA 142+66 RT
- STA 142+90 RT

**FUTURE GEOTEXTILE UNDER STONE FILL**

- STA 127+28 - 127+65 RT
- STA 142+66 RT
- STA 142+90 RT

**605.95 - UNDERDRAIN FLUSHING BASIN (SEE STANDARD D-30)**

- (U21) NOT USED
- (U20) STA 145+00 LT

**NOTES:**  
 1. FINAL LOCATION AND ELEVATIONS OF DRAINAGE ITEMS MAY BE ADJUSTED IN THE FIELD AS DEEMED NECESSARY BY THE ENGINEER.  
 2. DITCH MODIFICATIONS SHALL BE INCIDENTAL TO SPECIAL PROVISION (TRENCHLESS PIPE) (42")

**604.18 - NEW 4' X 6' REINFORCED CONCRETE DROP INLET W/ TYPE 'D' GRATES**

- (6) STA 142+66 LT
- (12A) STA 145+00 RT
- FUTURE 4' X 6' REINFORCED CONCRETE DROP INLET W/ TYPE 'D' GRATES
- (5C) STA 127+54 RT
- (5A) STA 127+54 LT
- (10) STA 143+50 LT

**601.2615 - NEW 18" CPEP (SL)**

- (6) STA 142+66 LT - RT
- FUTURE 18" CPEP (SL)
- (26) STA 142+05 LT - 142+66 LT
- (10) STA 142+66 LT - 143+50 LT
- (12) STA 143+50 LT - 145+00 LT
- (13) STA 145+00 LT - 146+15 LT
- (18) STA 129+49 RT - 129+83 RT

**FUTURE CONCRETE MANHOLE WITH CAST IRON COVER**

- (23) STA 126+84, 75.5' RT
- FUTURE 18" DIA - OPTION PIPE CPEP (SL), RCP
- (5) STA 127+54 RT - 127+40 RT
- (5A) STA 127+54 LT - 127+40 LT
- (5B) STA 127+40, LT-RT
- (5C) STA 127+54 RT - 124+40 RT

**FUTURE 18" DIAMETER - OPTION PIPE PCCSP, CAAP OR CPEP**

- (23) STA 126+91 RT - 127+30 RT
- (23A) STA 126+84 RT - 126+89 RT
- FUTURE 18" DIA END SECTION OPTION CPEPES, RCPES
- (5) STA 127+54 RT
- FUTURE 18" DIA END SECTION OPTION CPEPES, CAAPES, CPEPES
- (23) STA 127+30 RT

**601.7015 - NEW 18" CPEPES**

- (6) STA 142+66 RT
- FUTURE 18" CPEPES
- (18) STA 129+50 RT

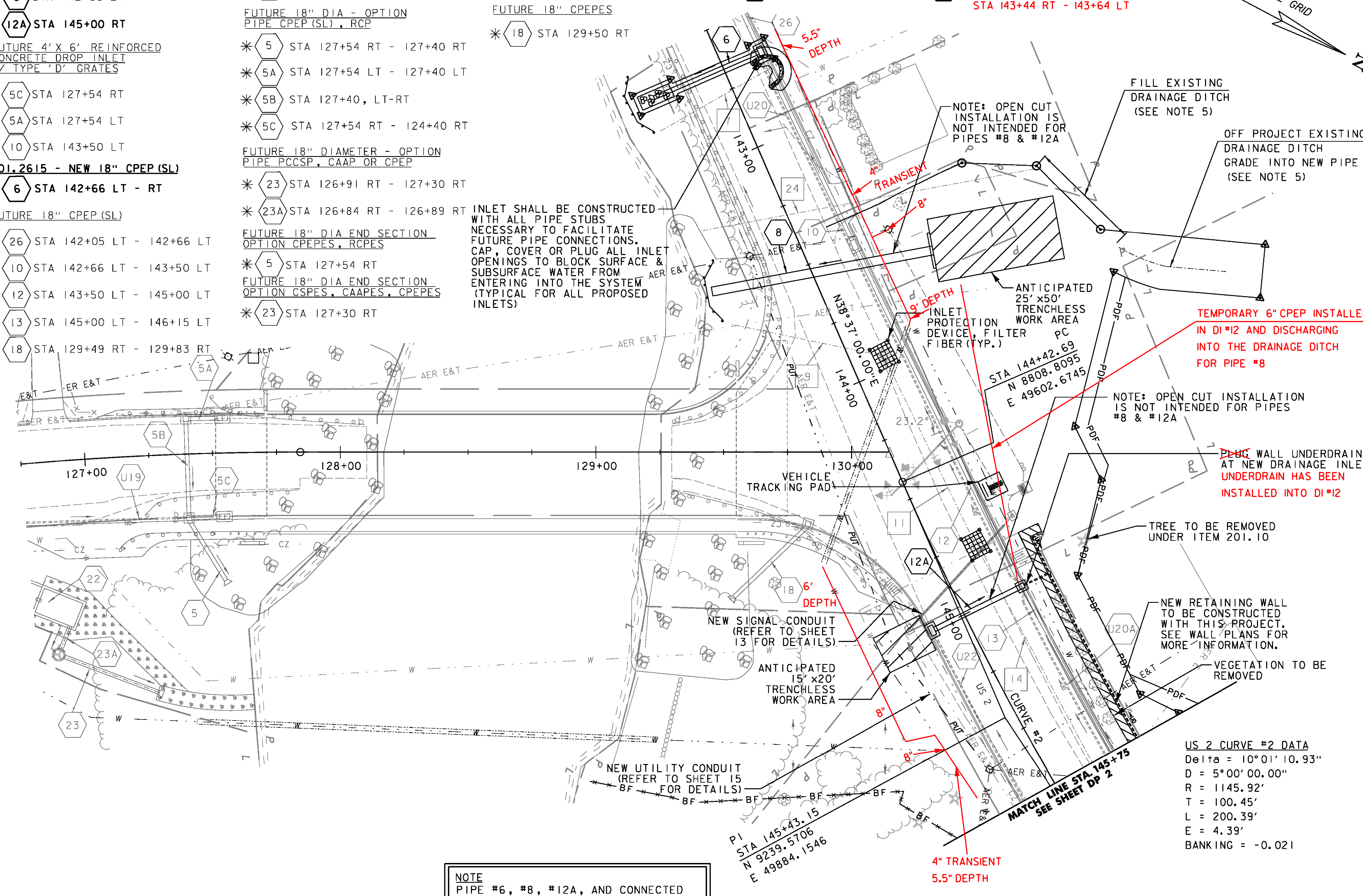
INLET SHALL BE CONSTRUCTED WITH ALL PIPE STUBS NECESSARY TO FACILITATE FUTURE PIPE CONNECTIONS. CAP, COVER OR PLUG ALL INLET OPENINGS TO BLOCK SURFACE & SUBSURFACE WATER FROM ENTERING INTO THE SYSTEM (TYPICAL FOR ALL PROPOSED INLETS)

**NEW SPECIAL PROVISION (TRENCHLESS PIPE) (42")**

- (12A) STA 145+00 LT - RT

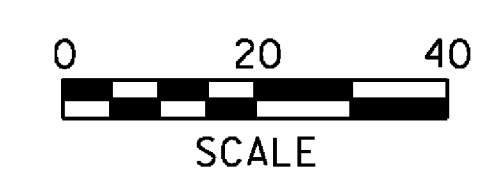
**NEW SPECIAL PROVISION (TRENCHLESS PIPE) (42")**

- (8) STA 143+45 RT - 143+65 LT (W/ HEADWALL AT INLET)
- STA 143+44 RT - 143+64 LT



**NOTE**  
 PIPE #6, #8, #12A, AND CONNECTED INLETS ARE PART OF THIS PROJECT. ALL OTHER DRAINAGE INFORMATION IS SHOWN FOR REFERENCE ONLY AND IS INTENDED TO BE BUILT AS PART OF A FUTURE CONTRACT.

\* DRAINAGE FEATURE IS NOT PART OF THIS CONTRACT; SHOWN FOR INFORMATION ONLY



PROJECT NAME:	EAST MONTPELIER	PLOT DATE:	6/14/2016
PROJECT NUMBER:	BF EWP2(I)	DRAWN BY:	E. ALLING
FILE NAME:	...18_Drainage plans - ER.dgn	DESIGNED BY:	K. RICHARDSON
GENERAL PLAN - GP 1		CHECKED BY:	G. GOYETTE
		SHEET	8 OF 42