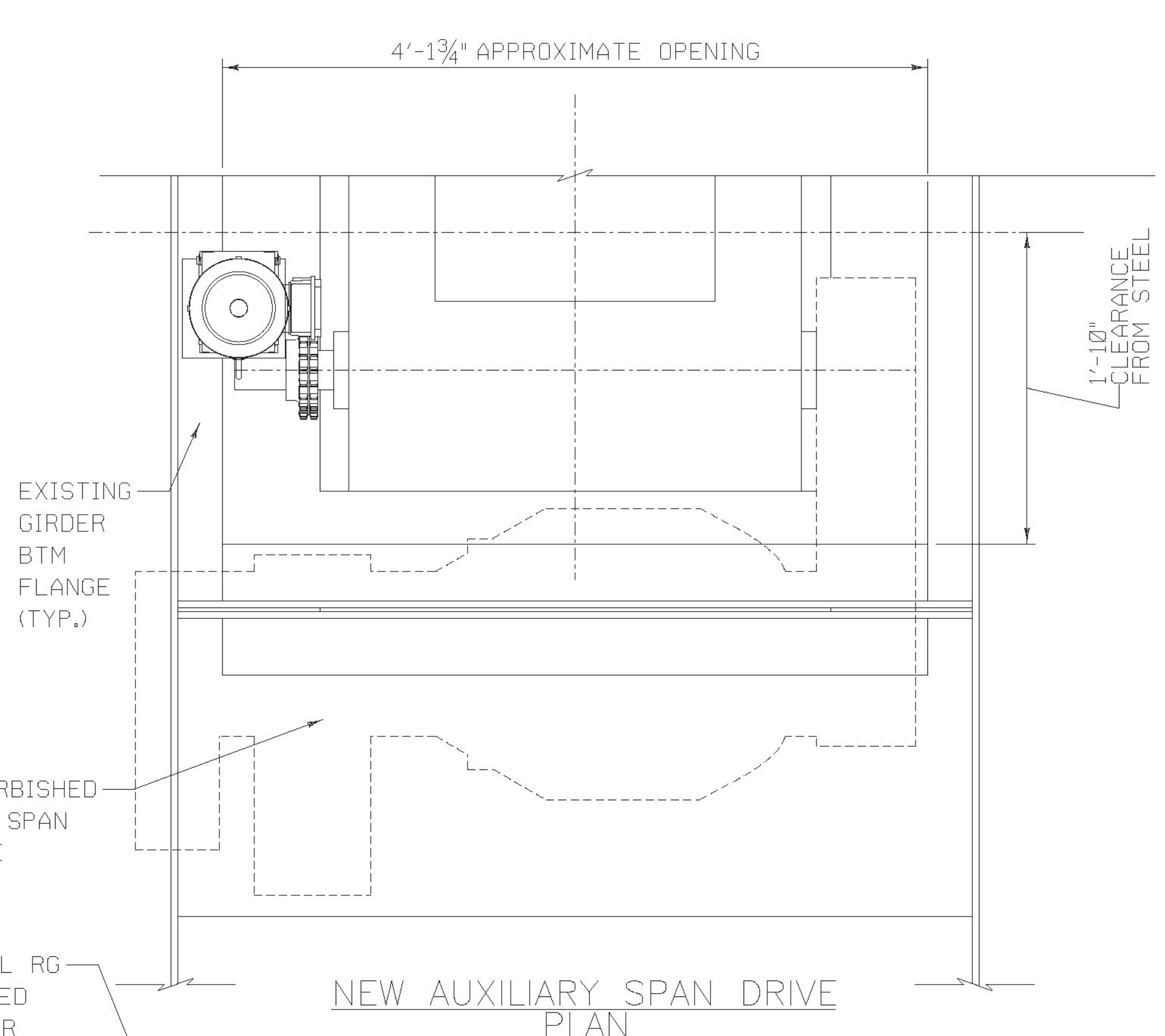
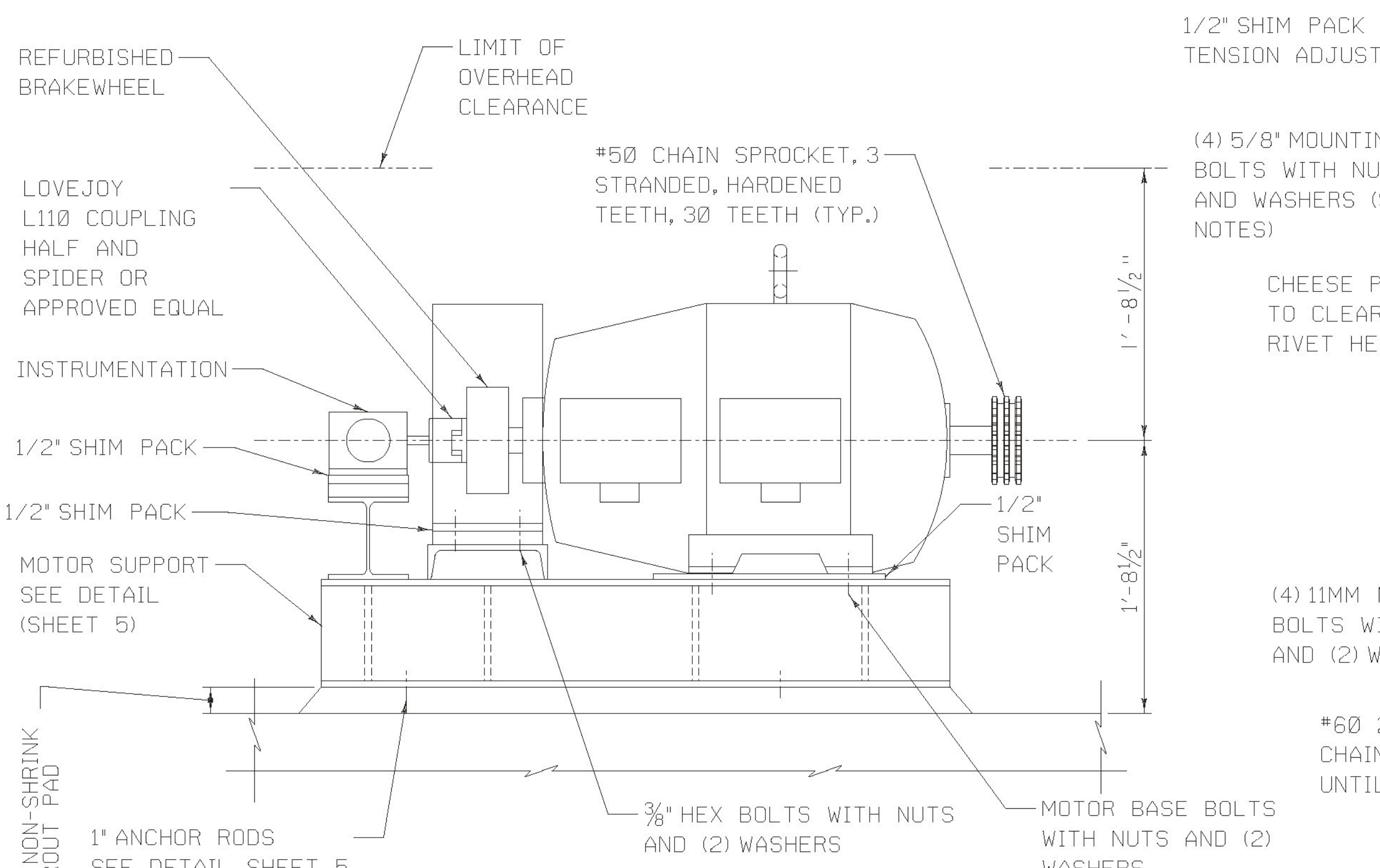


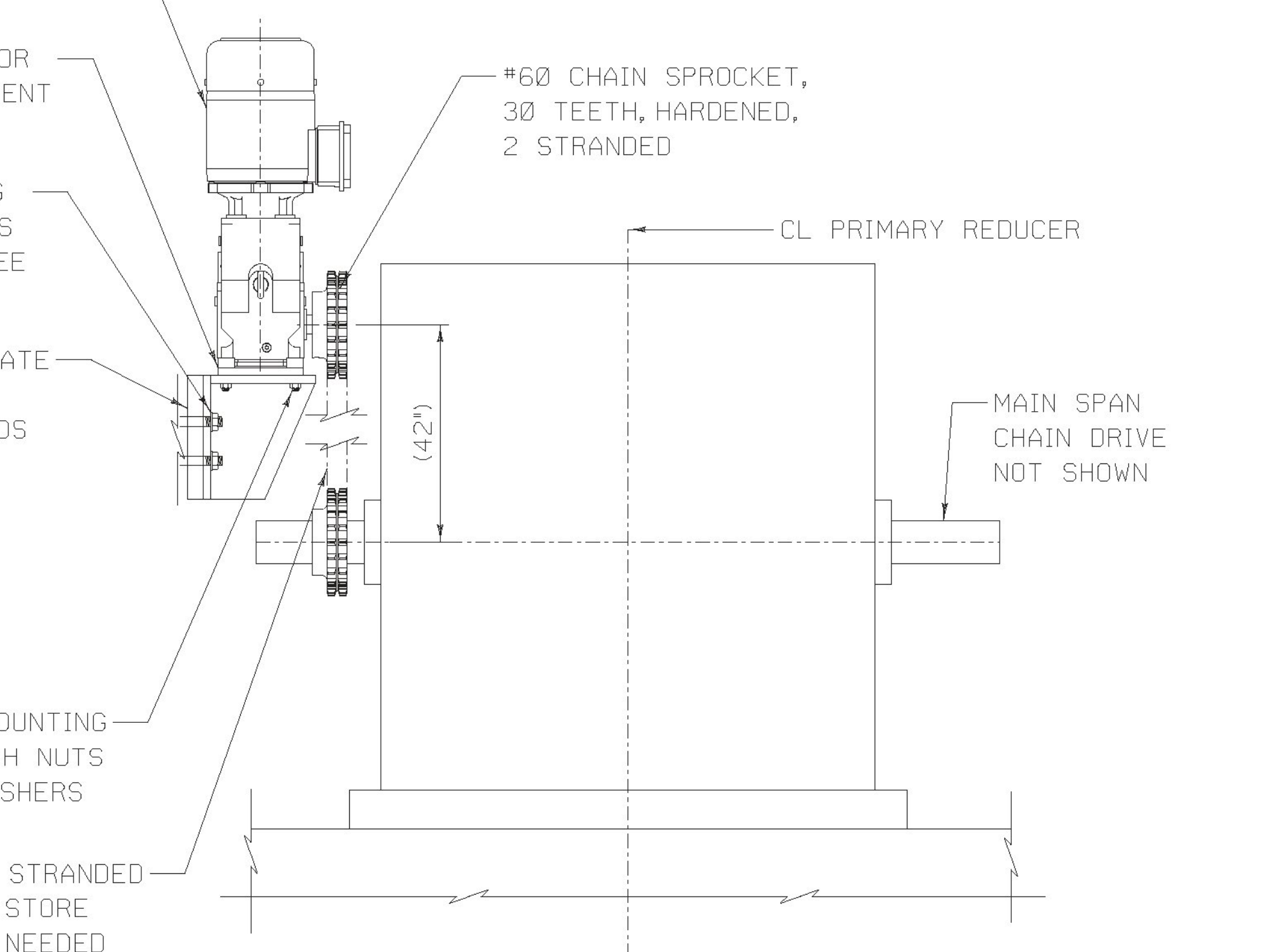
NEW SPAN DRIVE MACHINERY PLAN



NEW AUXILIARY SPAN DRIVE PLAN



NEW SPAN DRIVE MACHINERY ELEVATION



NEW AUXILIARY SPAN DRIVE ELEVATION

NOTES

1. THE DIMENSIONS PROVIDED ARE APPROXIMATE AND FOR REFERENCE ONLY. THE CONTRACTOR IS RESPONSIBLE FOR FIELD VERIFYING AND MEASURING ANY AND ALL DIMENSIONS NECESSARY FOR THE COMPLETION OF THE REPAIR WORK.
2. DETAILS SHOWN ARE FOR REFERENCE AND CONCEPTUAL PURPOSES ONLY AND ARE NOT TO SCALE.
3. PART NUMBERS AND COMPONENT SPECIFICATIONS ARE PROVIDED HERE FOR CONCEPTUAL PURPOSES. FINAL COMPONENT SELECTION SHALL BE BASED ON FINAL INSTALLATION GEOMETRY. THE CONTRACTOR IS RESPONSIBLE FOR FINAL SELECTION OF MACHINERY COMPONENTS.
4. THE CENTERLINE OF THE EMERGENCY DRIVE GEARMOTOR SPROCKET SHALL BE OFFSET HORIZONTALLY FROM THE CENTERLINE OF THE REDUCER SPROCKET.
5. CONTRACTOR TO VERIFY BOLT LENGTHS AND DIAMETERS FOR MOTOR BASE UPON REMOVAL OF MOTOR.
6. CONTRACTOR TO VERIFY BOLT LENGTH FOR GEARMOTOR MOUNT UPON REMOVAL OF MANUAL DRIVE BEARINGS.
7. GEARMOTOR TO HAVE BUILT IN SAFETY BRAKE TO SET WHILE MOTOR IS UNPOWERED. GEARMOTOR TO BE TENV.
8. SPROCKETS TO BE BORED FOR FN2 FIT WITH SHAFT JOURNALS.
9. UNLESS OTHERWISE NOTED, FITS AND FINISHES FOR MACHINERY SHALL BE AS FOLLOWS:

SURFACE	FIT	FINISH
MACHINERY BASE ON STEEL	-	250
MACHINERY BASE ON MASONRY	-	500
MACHINERY PARTS IN FIXED CONTACT	-	125
SHAFT JOURNAL	RC6	8
JOURNAL BUSHINGS	RC6	16
SOLID BUSHING IN BASE (TO 1/4" WALL)	FN1	63
SOLID BUSHING IN BASE (OVER 1/4" WALL)	FN2	63
HUBS ON SHAFTS (TO 2" BORE)	FN2	32
HUBS ON SHAFTS (OVER 2" BORE)	FN2	63
TURNED BOLTS IN FINISHED HOLES	LC6	63
SPLIT BUSHING IN BASE	LC1	125
SLIDING BEARINGS	RC6	32
KEYS AND KEYWAYS (SIDE FIT)	LC3	63
SHAFTS	-	63

THE ABOVE FITS FOR CYLINDRICAL PARTS SHALL ALSO APPLY TO THE MAJOR DIMENSIONS OF NON-CYLINDRICAL PARTS. ABOVE FINISHES ARE IN MICROINCHES.

SHIM PACK	THICKNESS (IN)	QUANTITY
CONSISTING OF THE FOLLOWING THICKNESSES AND QUANTITIES	1/4	1
	1/8	1
	1/16	1
	1/32	1
	1/64	2

10. ALL MANUFACTURERS PRODUCTS INDICATED ON THE PLANS ARE MERELY TO DEFINE SPECIFIC PERFORMANCE AND QUALITY REQUIREMENTS. THE CONTRACTOR MAY SUBMIT ALTERNATE PRODUCTS WHICH MEET THE DESIGN INTENT OF THE PLANS AND SPECIFICATIONS, AT NO ADDITIONAL COST TO VTRANS.

PROJECT NAME: NORTH HERO GRAND ISLE
 PROJECT NUMBER: BF EWPI(2)
 FILE NAME: z12b142_mwp22.dgn PLOT DATE: 03/03/2016
 PROJECT LEADER: T. FRENCH DRAWN BY: C. MADDEN
 DESIGNED BY: C. MADDEN CHECKED BY: P. DAVIS
 MECHANICAL WORK DETAILS I SHEET 4 OF 8