

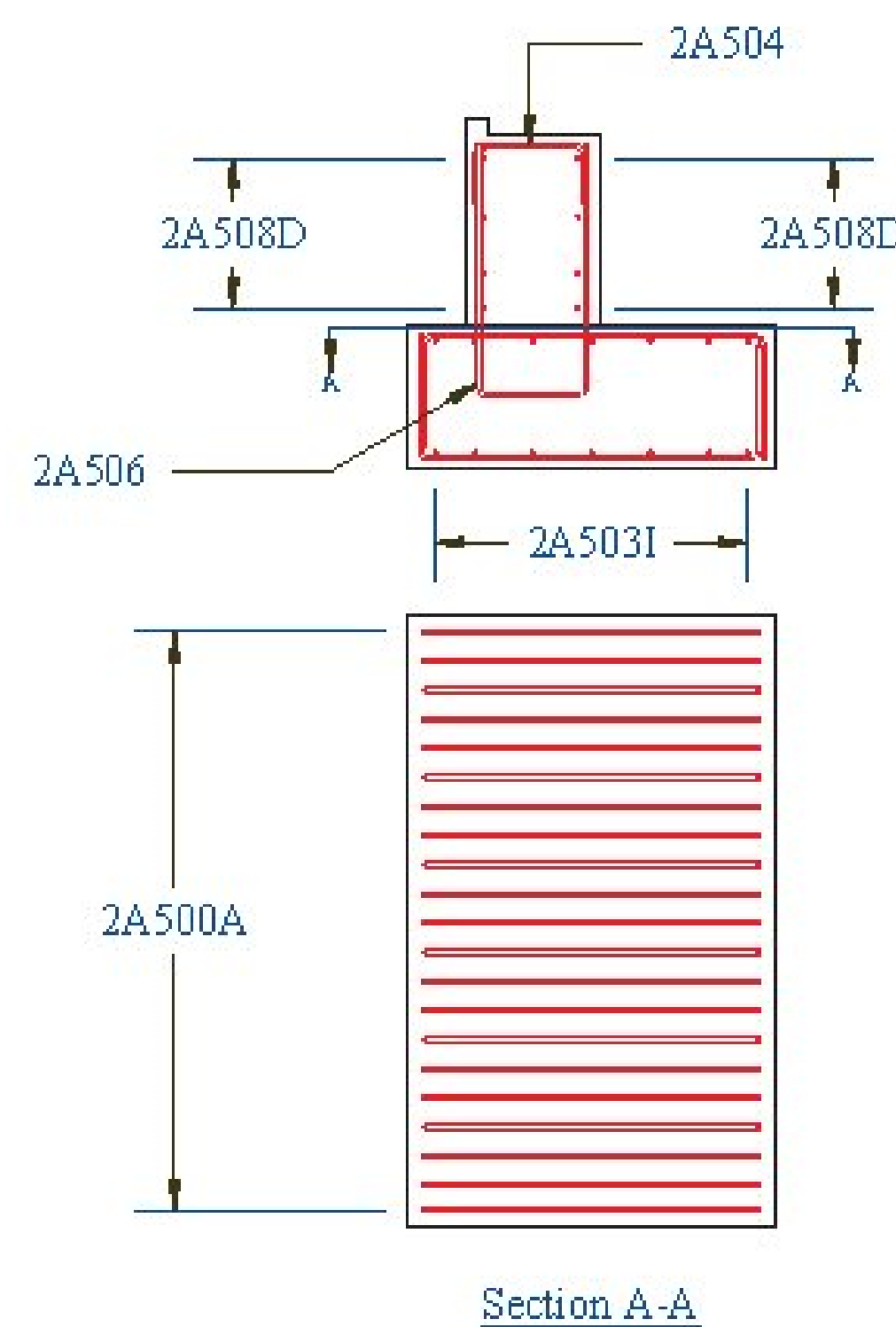
Reinforcing Schedule												
Mark	Quantity	Size	Spacing	Length	Type	A	B	C	D	E	F	G
1A500A	68	#5	1'-0"	8'-9"	S10		1'-6"	5'-9"	1'-6"			
1A500B	2	#5	1'-0"	8'-9 $\frac{1}{4}$ "	S10		1'-6"	5'-9 $\frac{1}{4}$ "	1'-6"			
1A500C	2	#5	1'-0"	8'-10 $\frac{1}{8}$ "	S10		1'-6"	5'-10 $\frac{1}{8}$ "	1'-6"			
1A500D	2	#5	1'-0"	9'-0 $\frac{1}{2}$ "	S10		1'-6"	6'-0 $\frac{1}{2}$ "	1'-6"			
1A500E	2	#5	1'-0"	9'-2 $\frac{1}{8}$ "	S10		1'-6"	6'-2 $\frac{1}{8}$ "	1'-6"			
1A500F	2	#5	1'-0"	9'-3 $\frac{3}{4}$ "	S10		1'-6"	6'-3 $\frac{3}{4}$ "	1'-6"			
1A500G	2	#5	1'-0"	9'-5 $\frac{3}{8}$ "	S10		1'-6"	6'-5 $\frac{3}{8}$ "	1'-6"			
1A500H	2	#5	1'-0"	9'-7"	S10		1'-6"	6'-7"	1'-6"			

Note:

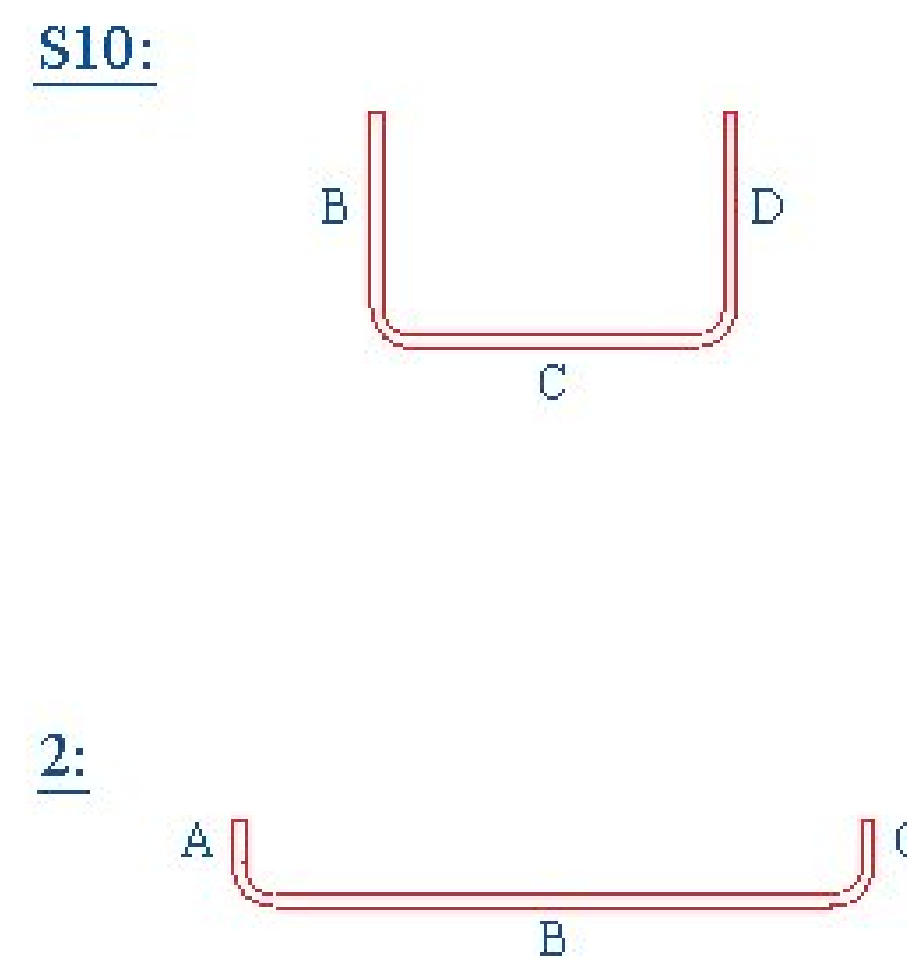
- 3" Clear unless noted otherwise.
- 1A505, 1A506, 2A505, 2A506, 1A602, 2A602 to be embedded greater than the 15" min as needed OR tops cut to length, after being cast in to footing, as needed to maintain pedestal wall slope.
- See reinforcing note 3 for test bars.

Reinforcing Schedule												
Mark	Quantity	Size	Spacing	Length	Type	A	B	C	D	E	F	G
1A500I	2	#5	1'-0"	9'-8 $\frac{1}{2}$ "	S10		1'-6"	6'-8 $\frac{1}{2}$ "	1'-6"			
1A500J	2	#5	1'-0"	9'-10 $\frac{1}{8}$ "	S10		1'-6"	6'-10 $\frac{1}{8}$ "	1'-6"			
1A500K	2	#5	1'-0"	9'-11 $\frac{3}{4}$ "	S10		1'-6"	6'-11 $\frac{3}{4}$ "	1'-6"			
1A500L	2	#5	1'-0"	10'-1 $\frac{1}{8}$ "	S10		1'-6"	7'-1 $\frac{1}{8}$ "	1'-6"			
1A500M	2	#5	1'-0"	10'-3"	S10		1'-6"	7'-3"	1'-6"			
1A500N	2	#5	1'-0"	10'-4 $\frac{5}{8}$ "	S10		1'-6"	7'-4 $\frac{5}{8}$ "	1'-6"			
1A500O	2	#5	1'-0"	10'-6 $\frac{1}{4}$ "	S10		1'-6"	7'-6 $\frac{1}{4}$ "	1'-6"			
1A500P	2	#5	1'-0"	10'-7 $\frac{3}{4}$ "	S10		1'-6"	7'-7 $\frac{3}{4}$ "	1'-6"			
1A500Q	2	#5	1'-0"	7'-9 $\frac{3}{4}$ "	S10		1'-6"	4'-9 $\frac{3}{4}$ "	1'-6"			
1A500R	2	#5	1'-0"	4'-0"	S10		1'-6"	1'-0"	1'-6"			
1A500S	2	#5	1'-0"	4'-1 $\frac{5}{8}$ "	S10		1'-6"	1'-1 $\frac{5}{8}$ "	1'-6"			
1A500T	2	#5	1'-0"	5'-4 $\frac{1}{8}$ "	S10		1'-6"	2'-4 $\frac{1}{8}$ "	1'-6"			
1A500U	2	#5	1'-0"	6'-6 $\frac{3}{8}$ "	S10		1'-6"	3'-6 $\frac{3}{8}$ "	1'-6"			
1A500V	2	#5	1'-0"	7'-9 $\frac{1}{8}$ "	S10		1'-6"	4'-9 $\frac{1}{8}$ "	1'-6"			
1A500W	2	#5	1'-0"	8'-11 $\frac{1}{2}$ "	S10		1'-6"	5'-11 $\frac{1}{2}$ "	1'-6"			
1A500X	2	#5	1'-0"	10'-2"	S10		1'-6"	7'-2"	1'-6"			
1A500Y	2	#5	1'-0"	10'-2 $\frac{3}{8}$ "	S10		1'-6"	7'-2 $\frac{3}{8}$ "	1'-6"			
1A500Z	2	#5	1'-0"	9'-8 $\frac{3}{8}$ "	S10		1'-6"	6'-8 $\frac{3}{8}$ "	1'-6"			
1A500AA	2	#5	1'-0"	9'-2 $\frac{3}{8}$ "	S10		1'-6"	6'-2 $\frac{3}{8}$ "	1'-6"			
1A501A	364	#5	1'-0"	8'-6"	STR							
1A501B	2	#5	1'-0"	9'-1 $\frac{3}{4}$ "	STR							
1A501C	2	#5	1'-0"	9'-0 $\frac{3}{8}$ "	STR							
1A501D	2	#5	1'-0"	8'-10 $\frac{1}{8}$ "	STR							
1A501E	2	#5	1'-0"	8'-9 $\frac{1}{4}$ "	STR							
1A501F	2	#5	1'-0"	8'-7 $\frac{5}{8}$ "	STR							
1A501G	2	#5	1'-0"	8'-6 $\frac{1}{8}$ "	STR							
1A501H	2	#5	1'-0"	8'-4 $\frac{1}{2}$ "	STR							
1A501I	2	#5	1'-0"	8'-2 $\frac{3}{8}$ "	STR							
1A501J	2	#5	1'-0"	8'-1 $\frac{1}{2}$ "	STR							
1A501K	2	#5	1'-0"	9'-0 $\frac{3}{8}$ "	STR							
1A501L	2	#5	1'-0"	8'-8 $\frac{3}{8}$ "	STR							
1A501M	2	#5	1'-0"	8'-3 $\frac{3}{8}$ "	STR							

WF4C Reinforcing Detail



Rebar Bend Types



TYLIN INTERNATIONAL
 The stamped document care hereby:
 Approved
 Approved and sealed
 Re-use and re-submit
 See transmittal for additional information as applicable.
 This review is for general performance with design assumptions. Any deviation from these assumptions is not to be used by the Contractor has not been reviewed. Review by the Engineer shall not relieve the Contractor of the contractual responsibility to any errors or omissions from the contract requirements.
 Josh Olund 08/03/2016
 Designer Date

CONTRACTORS VISPEL:

Vermont Agency of Transportation
RECEIVED
 CK'D BY TY Lin OK'D BY KMH
 August 2, 2016
 RESUBMIT No Approved
 BY Kristin Hogue DATE 08/03/2016

PRECAST CONCRETE BOX CULVERT SHOP DRAWINGS (SDI JOB #17682)
 SUPERVISOR: E. Barendse
 DETAILER: I. ADAMS
 CHECKER: E. Barendse
 PROJECT NAME: DUXBURY
 PROJECT #: BF 013-4(47)
 LOCATION: DUXBURY, VT

INSTALLER:
 J.A. MCDONALD
 585 Gilman Rd
 Lyndon Ctr, VT 05850
 07/29/16

FABRICATOR:
 193 INDUSTRIAL AVE.
 WILUSTRON, VT 05495
 Ph: (802) 658-0201
SD Ireland
 PRECAST
 REINFORCING_SCHEDULE 9_OF_12