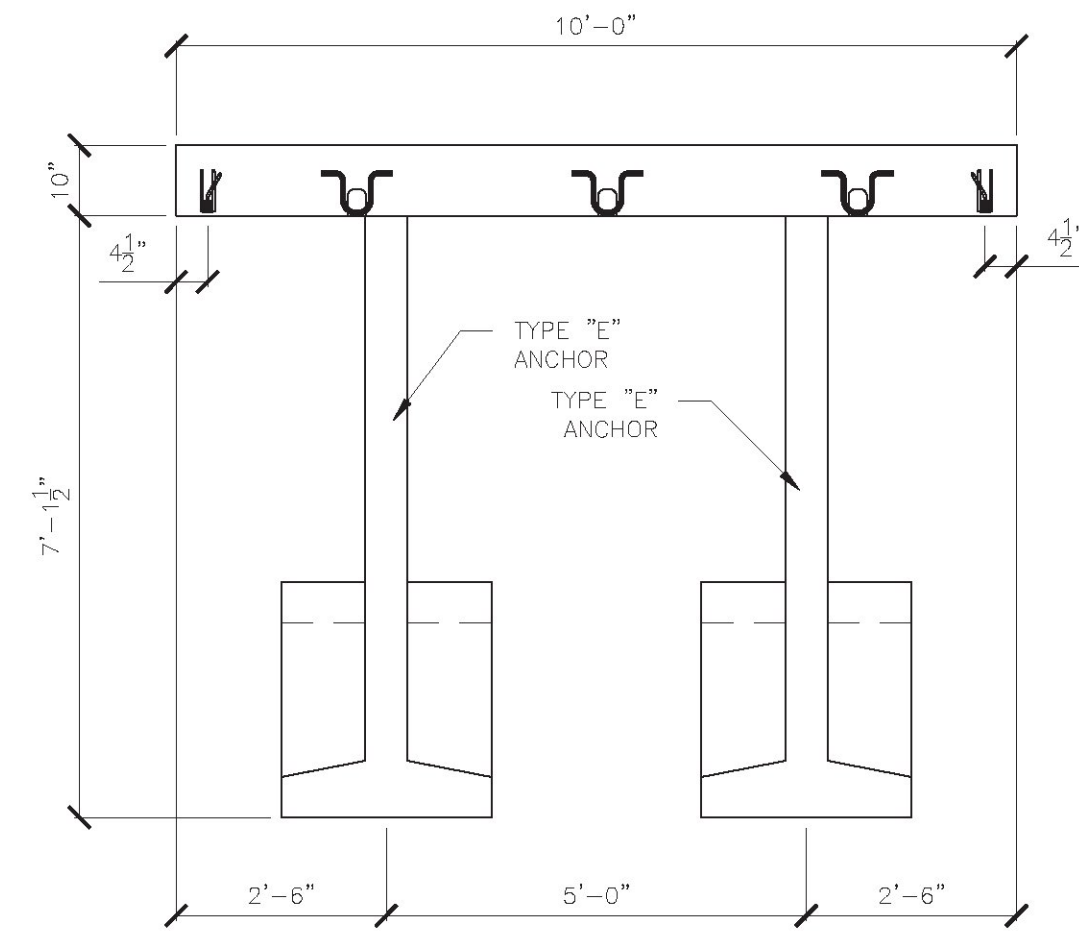
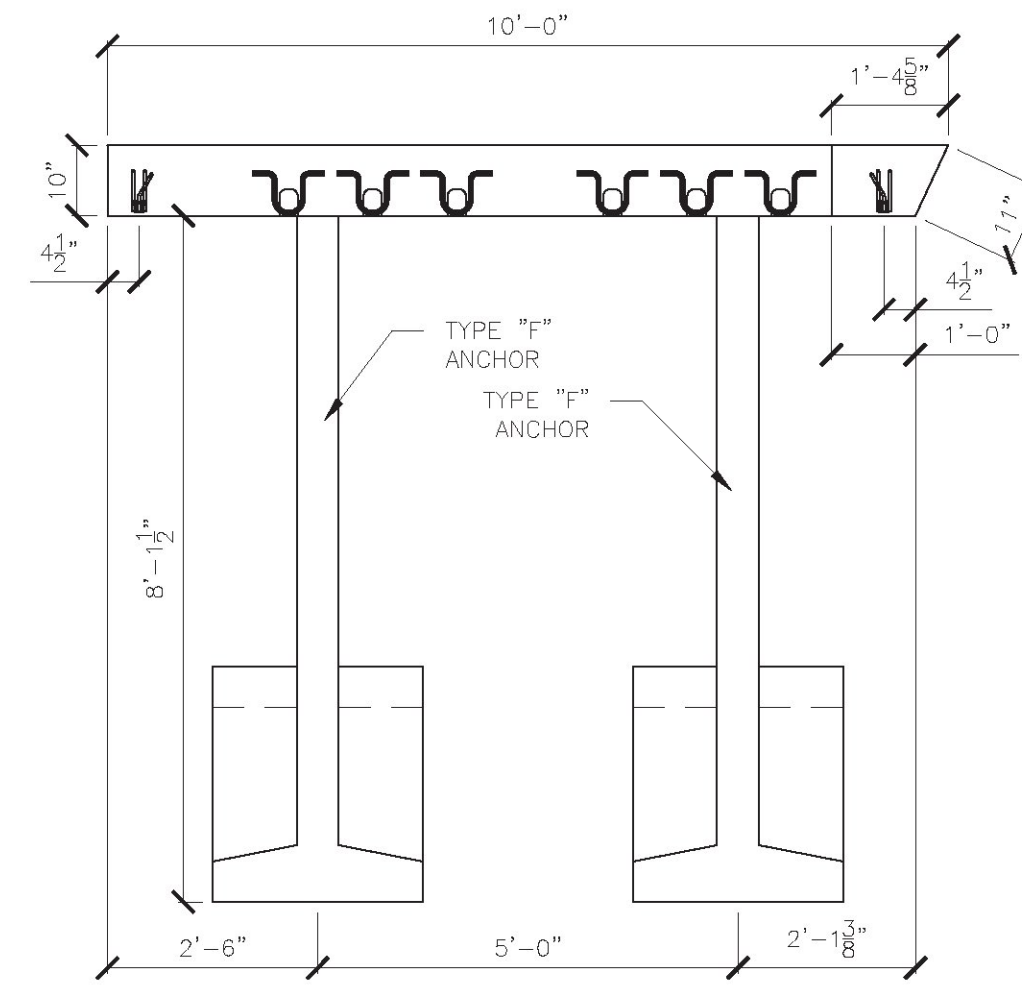


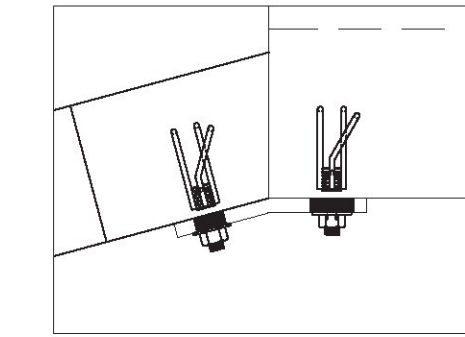
1 WW4C PLAN VIEW
S6.0 1/2" = 1'-0"



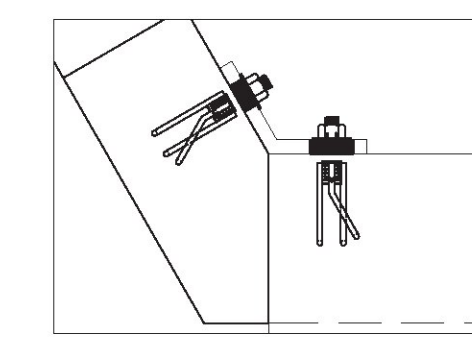
2 WW4B PLAN VIEW
S6.0 1/2" = 1'-0"



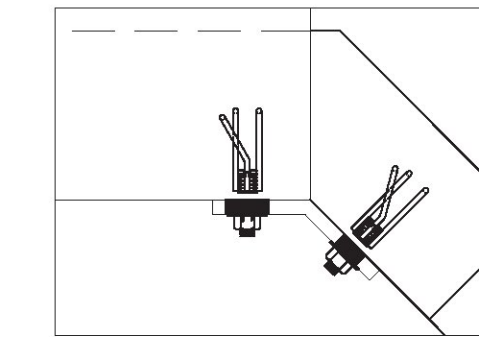
3 WW4A PLAN VIEW
S6.0 1/2" = 1'-0"



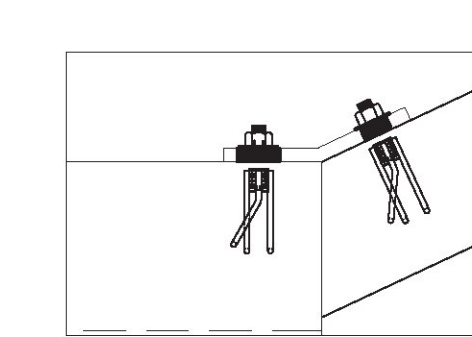
WW1 CONNECTION
165° BENT PLATE



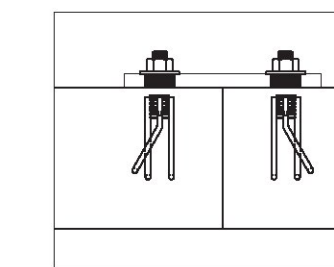
WW3 CONNECTION
120° BENT PLATE



WW2 CONNECTION
135° BENT PLATE

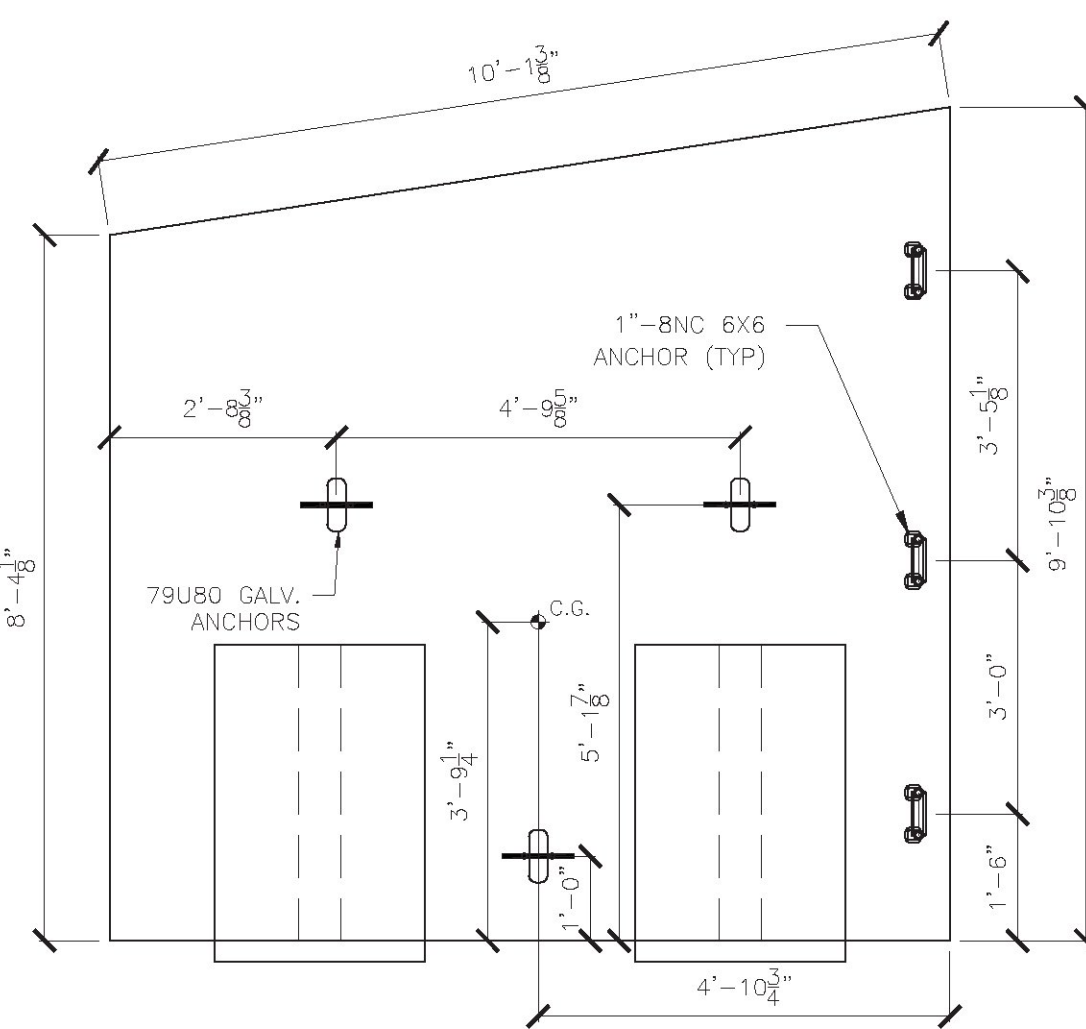


WW4 CONNECTION
155° BENT PLATE



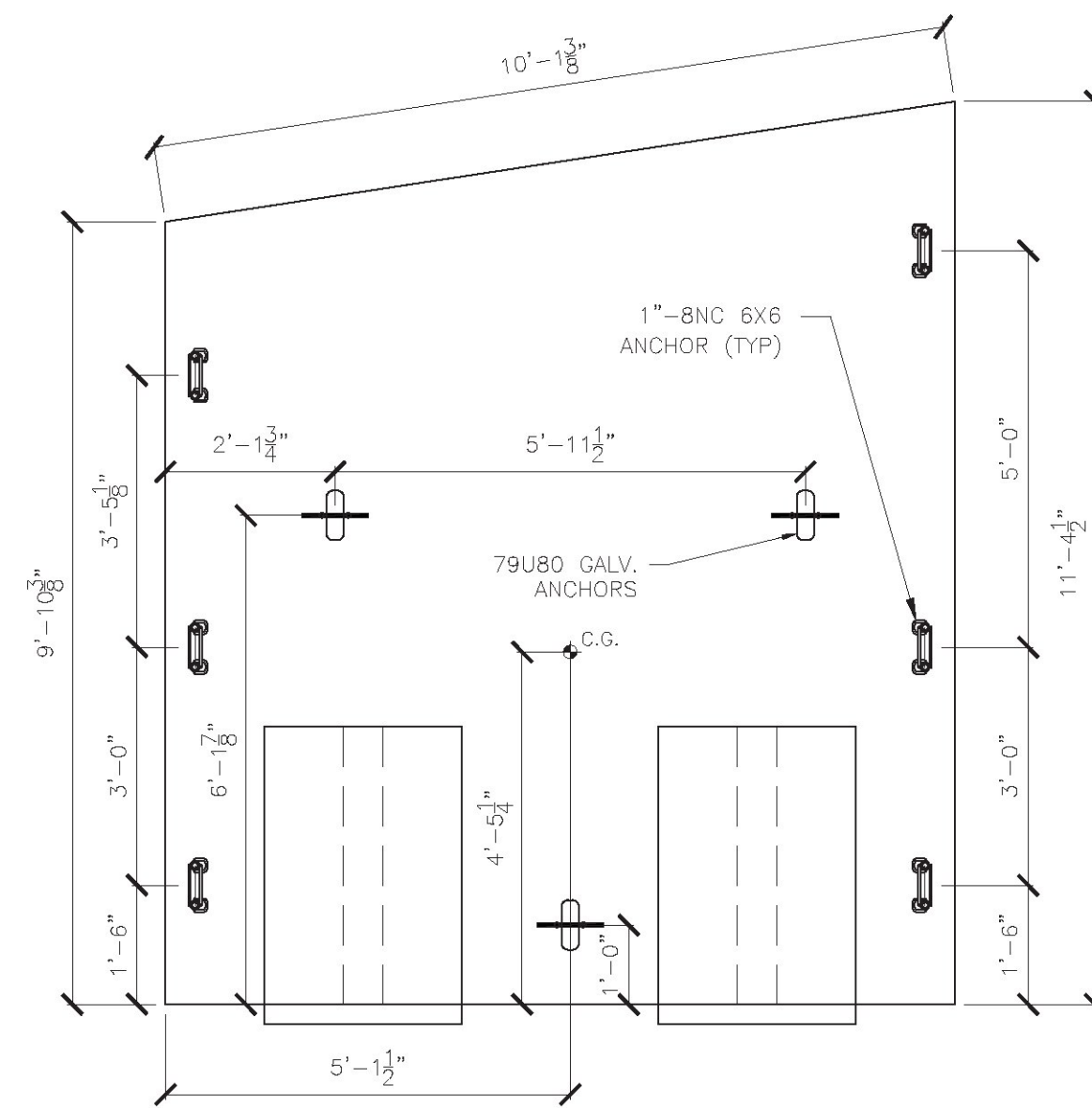
MIDWALL CONNECTION
180° PLATE

ALL CONNECTIONS USE
1" - 8NC 6X6 DOUBLE
WINGWALL ANCHORS
WITH 1" BENT PLATES



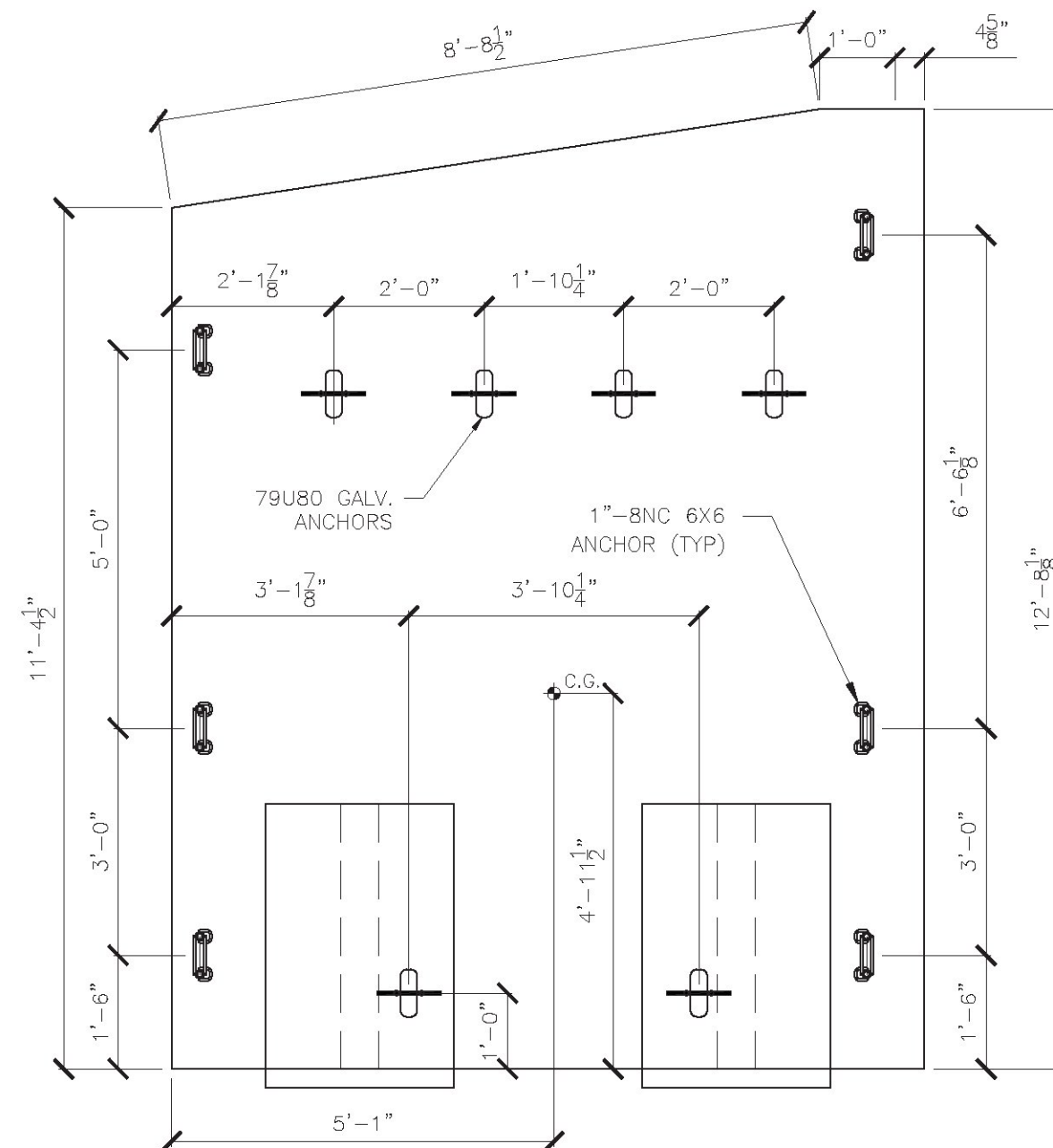
4 WW4C ELEVATION
S6.0 1/2" = 1'-0"

1 WW4C
REQUIRED
UNIT WEIGHT AND VOLUME:
TOTAL: 16,429#
WALL: (2.78 CY)
E ANCHOR: 0.84 CY
F ANCHOR: 0.84 CY



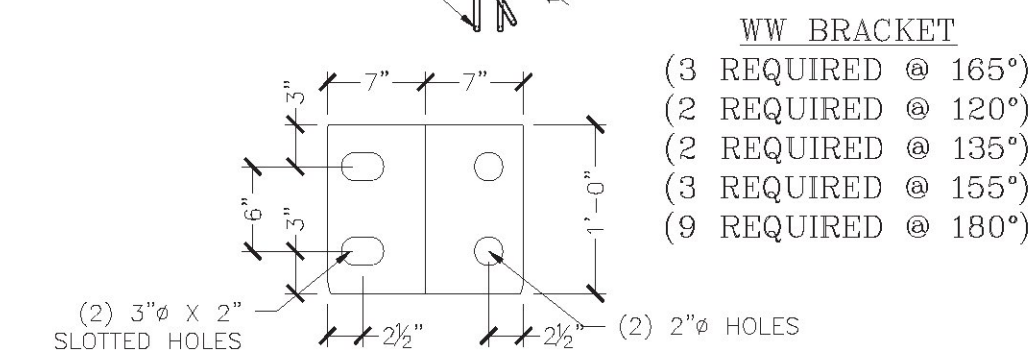
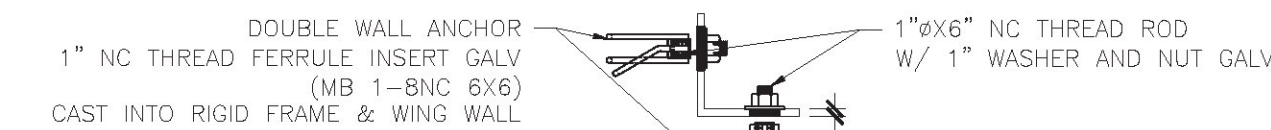
5 WW4B ELEVATION
S6.0 1/2" = 1'-0"

1 WW4B
REQUIRED
UNIT WEIGHT AND VOLUME:
TOTAL: 18,262#
WALL: (3.23 CY)
E ANCHOR: 0.84 CY
F ANCHOR: 0.84 CY



6 WW4A ELEVATION
S6.0 1/2" = 1'-0"

1 WW4A
REQUIRED
UNIT WEIGHT AND VOLUME:
TOTAL: 20,655#
WALL: (3.68 CY)
F ANCHOR: 0.71 CY
E ANCHOR: 0.71 CY



PLATES TO BE MADE OF 3/4" MILD STEEL,
PLASMA CUT, AND BENT AS REQUIRED.
(HOT DIPPED GALVANIZED AFTER BENDING)

3 WINGWALL BRACKET DETAIL
S5.0 1" = 1'-0"

Vermont Agency of Transportation
RECEIVED
CK'D BY TYLin OK'D BY KMH
September 14, 2016
RESUBMIT No Approved
BY Kristin Higgins DATE 09-14-2016

TYLIN INTERNATIONAL
The stamped documents are hereby:
Approved
Approved as noted
Revise and resubmit
See transmittal for additional information as applicable.
This review is for general conformance with design concept only.
Any deviation from the plans or specifications not clearly noted by
the Contractor has not been reviewed. Review by the Engineer shall
not relieve the Contractor of the contractual responsibility for any
errors or deviation from the contract requirements.
Josh Olund 09/13/2016
Reviewer Date

DESIGNED AND DETAILED BY:
DELTA
ENGINEERS, ARCHITECTS, & LAND SURVEYORS
660 HOOPER ROAD, ENDWELL, NY 13760-1564
TEL (607) 551-6600 FAX (607) 551-6650

Scale: AS SHOWN
Checked by: CSC
Designed by: DELTA
Drawn by: CSC
Project No: 7347
Date: 09/16

PREPARED FOR:
MICHE
MICHE CORPORATION, INC.
173 BUXTON ROAD, SUITE 200 BOX 870
MIDDLEBURY, VT 05753
PHONE: 802-243-2318
FAX: 802-243-7426

VT 100 Road Culvert
Duxbury, Vermont
Wingwall Details

DWG NO.
S6.0

By	
Revision	
Date	
No.	9/12/16