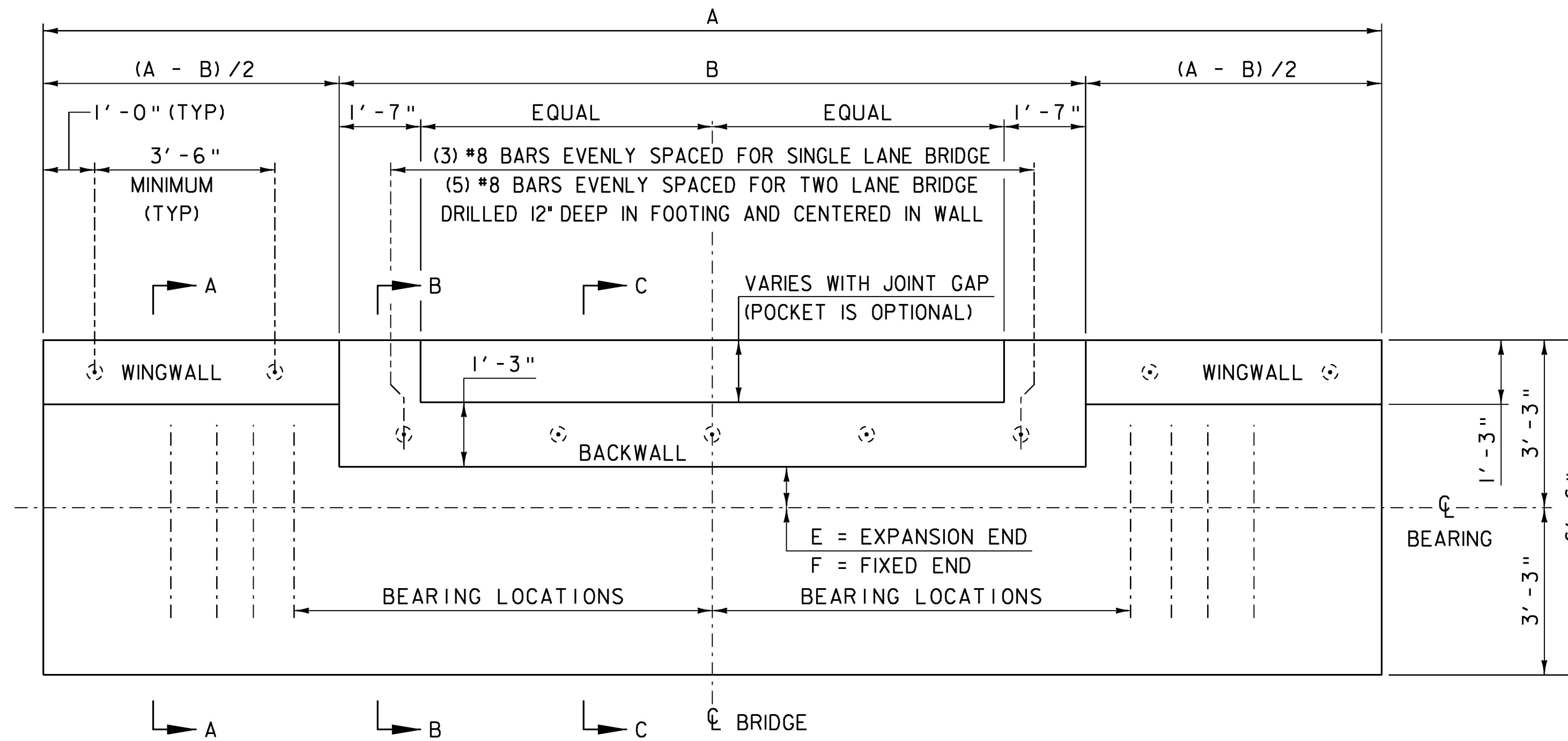


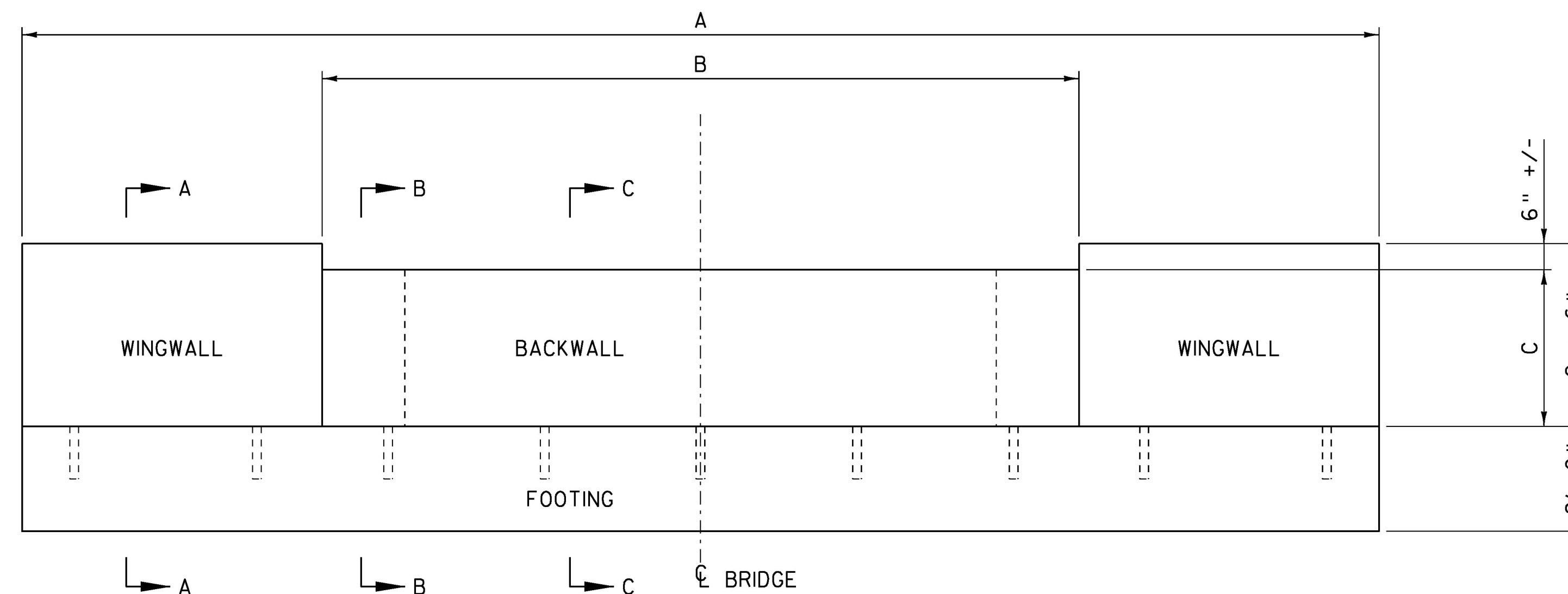
FOUNDATION NOTES:

1. THE TYPICAL FOUNDATION LAYOUTS REQUIRED TO DIMENSIONALLY FACILITATE THE INSTALLATION OF MABEY COMPACT 200 BRIDGES ARE SHOWN.
2. THE BRIDGE FOUNDATION FOOTING MUST BE PLACED ON SUITABLE MATERIAL. IF THE FOUNDATION MATERIAL IS UNSUITABLE, THE FOOTING SHOULD BE UNDERCUT 2'-0" AND REPLACED WITH GRANULAR BACKFILL FOR STRUCTURES.
3. THE ABUTMENT BALLAST WALLS SHOULD NOT BE CONSTRUCTED UNTIL THE BRIDGE HAS BEEN LAUNCHED AND JACKED DOWN INTO POSITION ON ITS BEARINGS.
4. IT IS ESSENTIAL THAT ALL OF THE BEARINGS ON AN ABUTMENT ARE SET AT THE SAME LEVEL, TO AVOID MALDISTRIBUTION OF STRESSES IN THE BRIDGE.
5. DIMENSIONS MARKED ANNOTATED WITH LETTER VALUES ARE LOCATED IN THE "BRIDGE FOUNDATION DIMENSION TABLE". DIMENSION "E" WILL ACCOUNT FOR BRIDGE EXPANSION DUE TO TEMPERATURE AND THE VALUE SHOWN IS TO BE ADDED TO THE VALUES SHOWN IN THE "EXPANSION GAP TEMPERATURE ADJUSTMENT" TABLE.
6. THE BRIDGE AND WALLS MAY BE PLACED ON THE FOOTING AFTER IT ACHIEVES A COMPRESSIVE STRENGTH OF 2000 PSI. THE LENGTH OF THE CURE CAN BE VERIFIED BY THE MIX DESIGN STRENGTHS OR CYLINDER BREAKS.



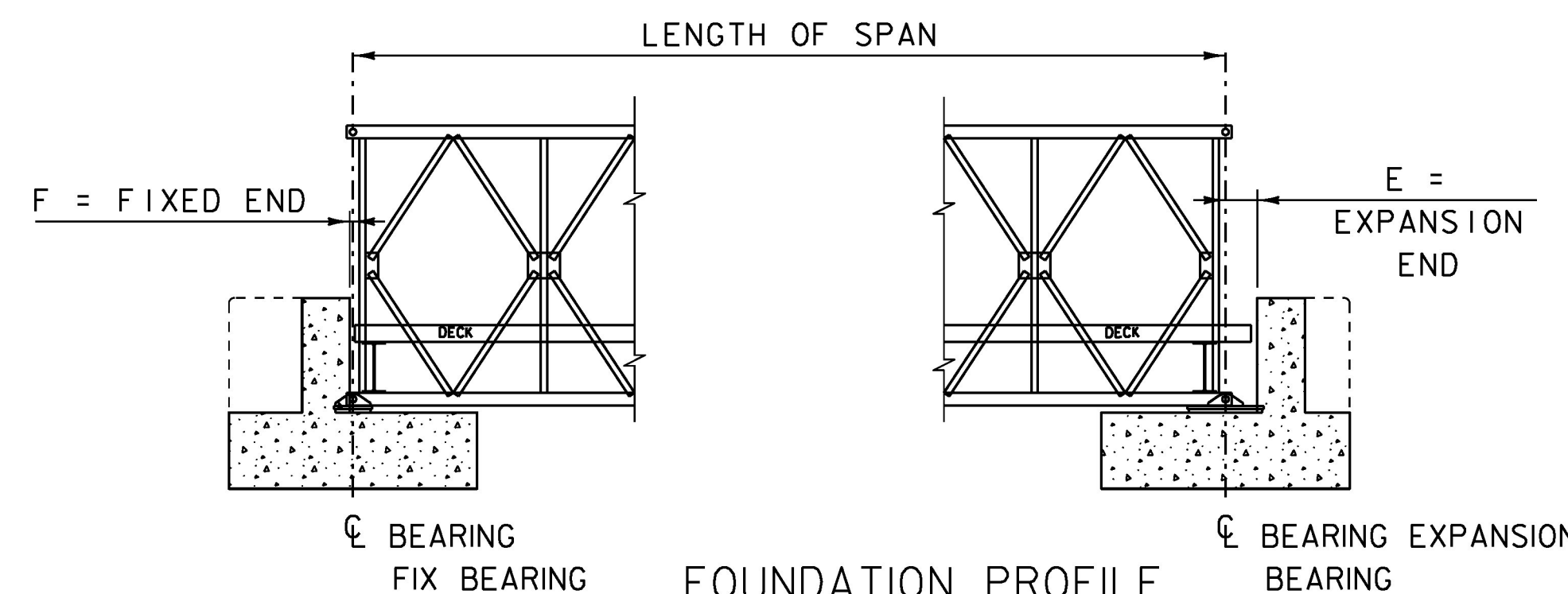
CAST-IN-PLACE FOUNDATION PLAN

SCALE = 1/2" = 1'-0"



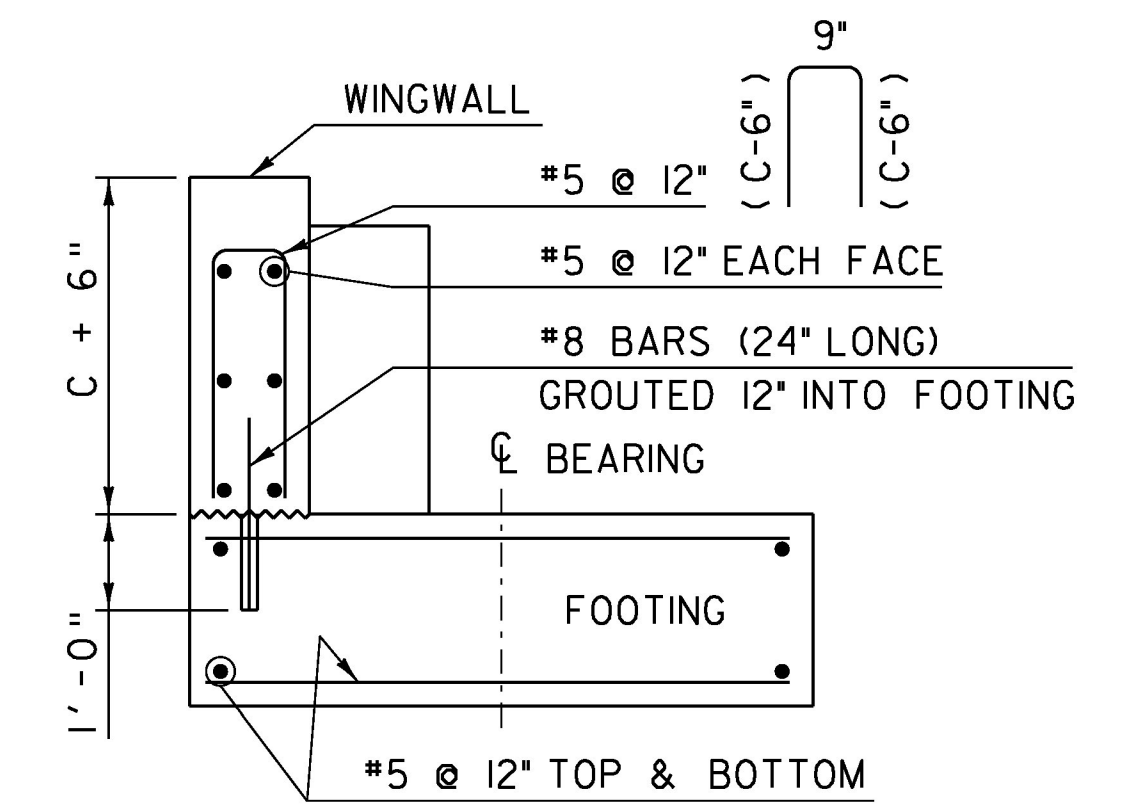
CAST-IN-PLACE FOUNDATION ELEVATION

SCALE = 1/2" = 1'-0"



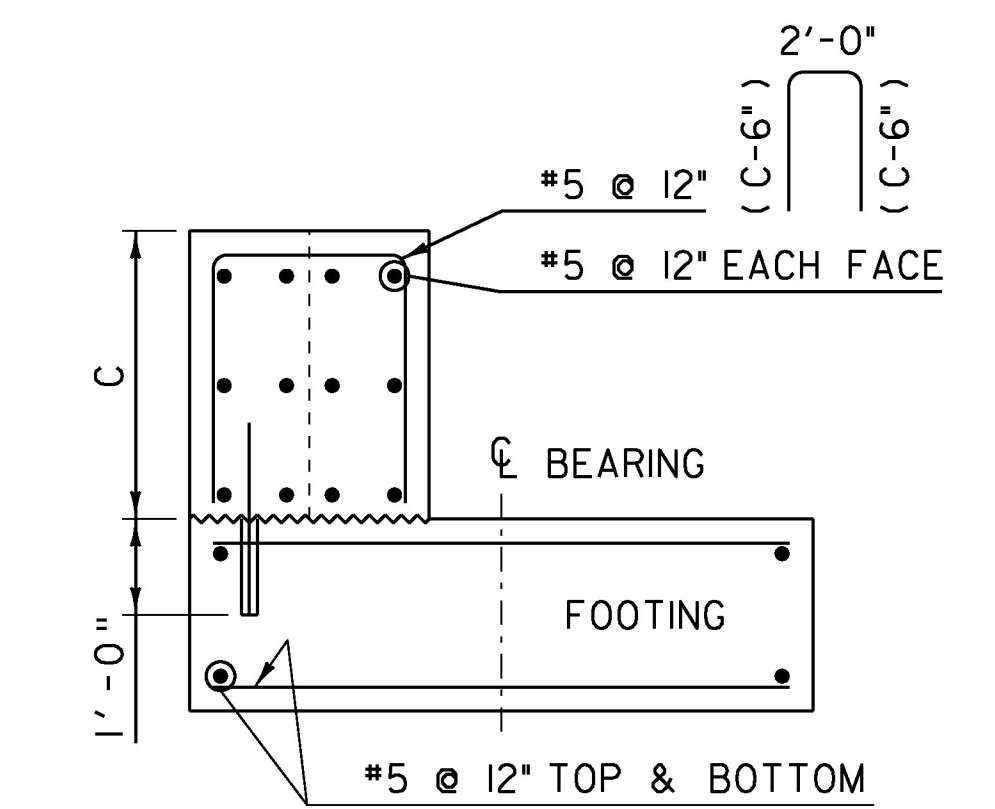
FOUNDATION PROFILE

SCALE = 1/4" = 1'-0"



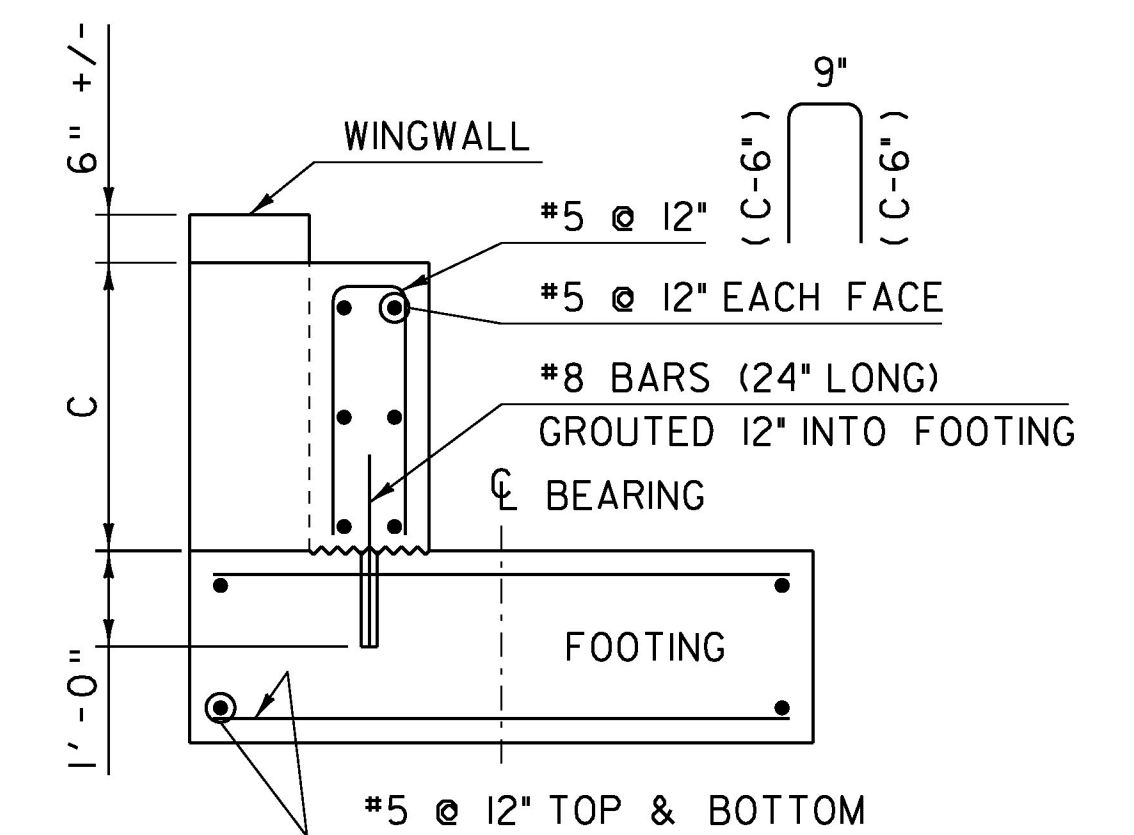
SECTION A-A CAST-IN-PLACE

SCALE = 1/2" = 1'-0"



SECTION B-B CAST-IN-PLACE

SCALE = 1/2" = 1'-0"



SECTION C-C CAST-IN-PLACE

SCALE = 1/2" = 1'-0"

BRIDGE FOUNDATION DIMENSIONS TABLE				
DIMENSIONS	SINGLE LANE WIDTH		TWO LANE WIDTH	
	11 FT	14 FT	24 FT	24FT
	STANDARD	EXTRA WIDE	HS20	HA/MS250
A	23'-0"	26'-3"	37'-8"	37'-8"
B	11'-2"	14'-5"	25'-3"	25'-3"
C	2'-7 1/2"	2'-7 3/4"	3'-3 1/2"	3'-3 3/4"
E	(8 1/2" + H)	(8 1/2" + H)	(9" + H)	(9" + H)
F	3/8"	3/8"	5/8"	5/8"

EXPANSION GAP TEMPERATURE ADJUSTMENT					
" H " Distance (in)					
Temp (°F)	Expansion Length (ft)				
	100 - 120	>120 - 140	>140 - 160	>160 - 180	>180 - 200
0	1 5/8	1 5/16	1 1/2	1 11/16	1 7/8
15	1 1/2	1 1/8	1 5/16	1 1/2	1 5/8
30	1 5/16	1	1 1/8	1 1/4	1 3/8
45	1 3/16	13/16	15/16	1 1/16	1 3/16
60	1 1/16	5/8	3/4	13/16	15/16
75	15/16	1/2	9/16	5/8	11/16
90	3/4	5/16	3/8	7/16	7/16
105	5/8	3/16	3/16	3/16	1/4

- 1) Expansion Length: Length of span, from Expansion Joint to nearest Fixed Bearing.
- 2) Temp: Approximate temperature of steel during joint placement.

REBAR NOTE:
 3" CLEAR, UNLESS OTHERWISE SPECIFIED ON THE PLANS.
 2'-2" BAR LAP UNLESS OTHERWISE SPECIFIED ON THE PLANS.

PROJECT NAME: MABEY BRIDGE FOUNDATION

PROJECT NUMBER:

FILE NAME: MaybeyDetails.dgn

PROJECT LEADER: VAOT

DESIGNED BY: VAOT

MABEY FOUNDATION DETAIL SHEET 1

PLOT DATE: 02-SEP-2011

DRAWN BY: MCL

CHECKED BY: VAOT

SHEET 1 OF 2