

GPS CONTROL POINTS

HVCTRL #1
 "STATE FARM"
 NORTH = 665405.5920
 EAST = 1575241.4560
 ELEV. = 456.5610

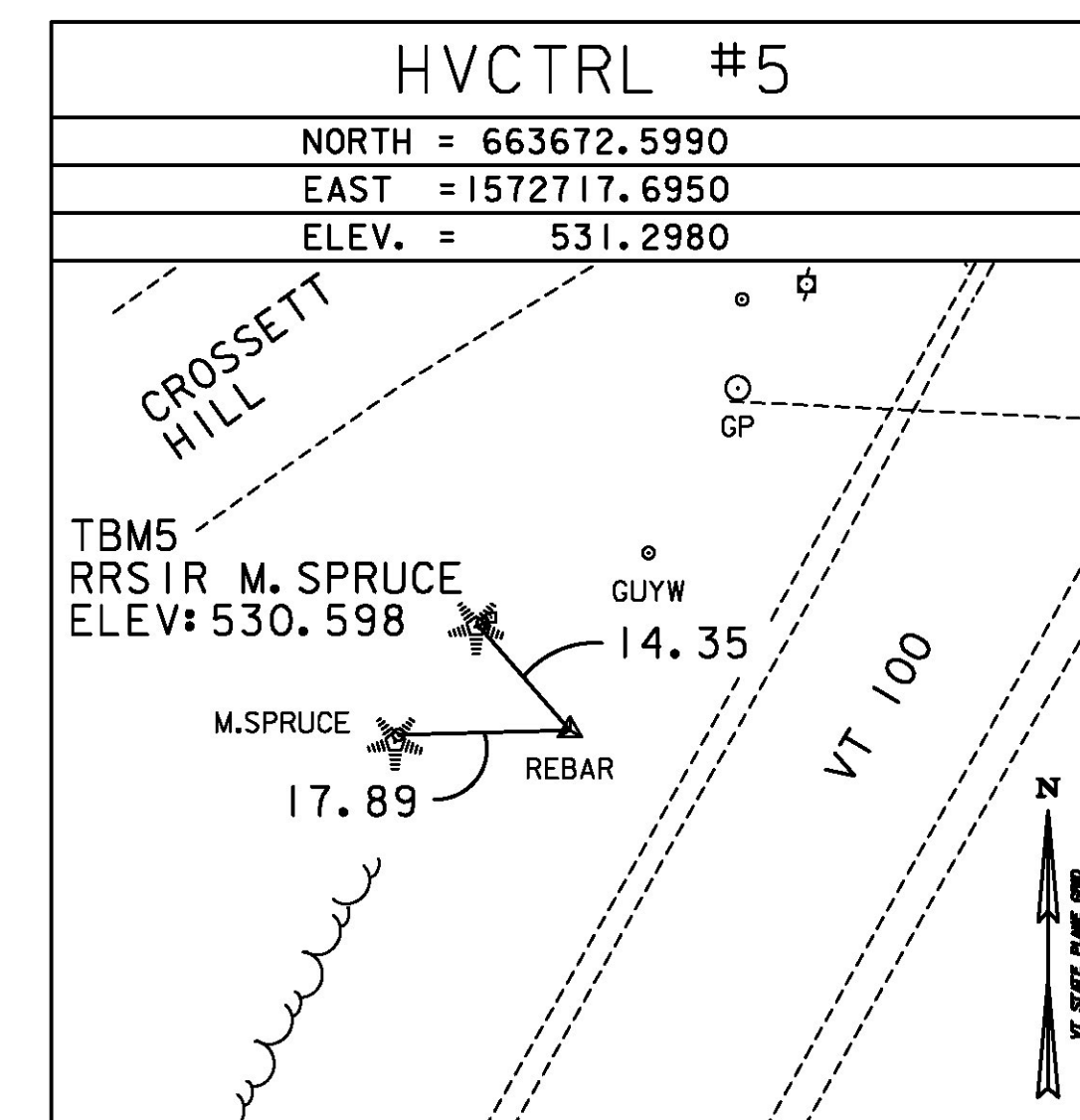
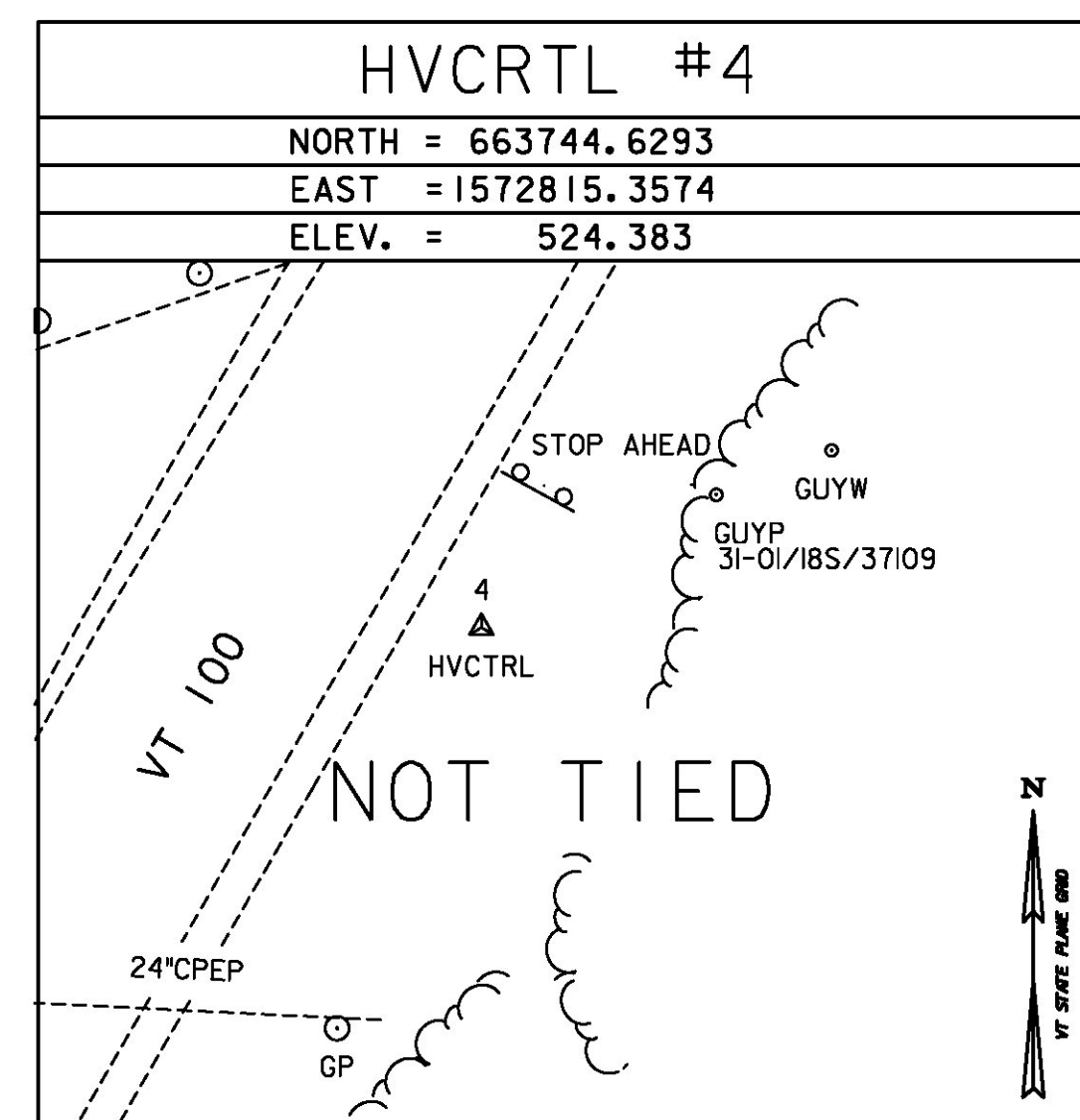
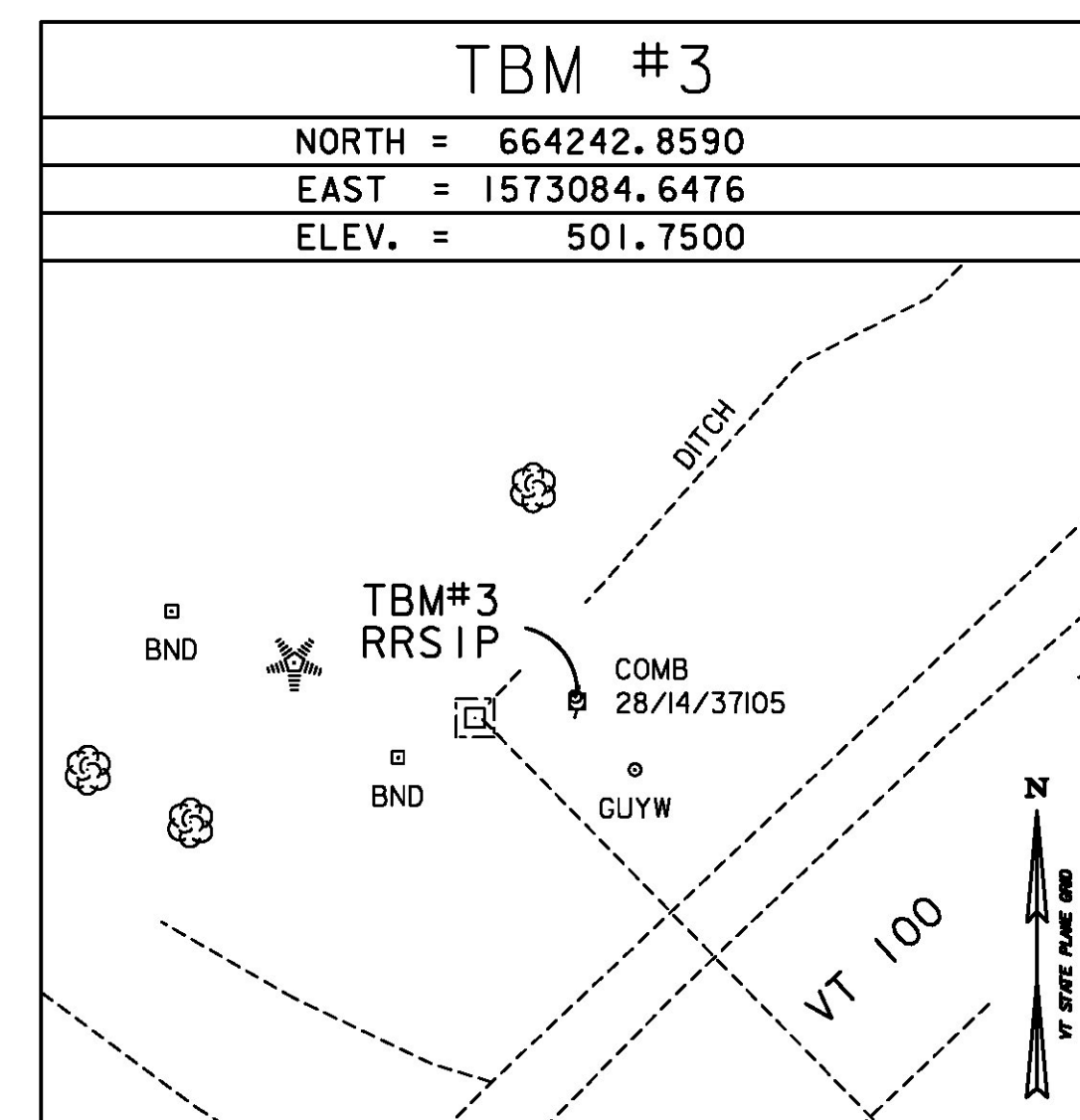
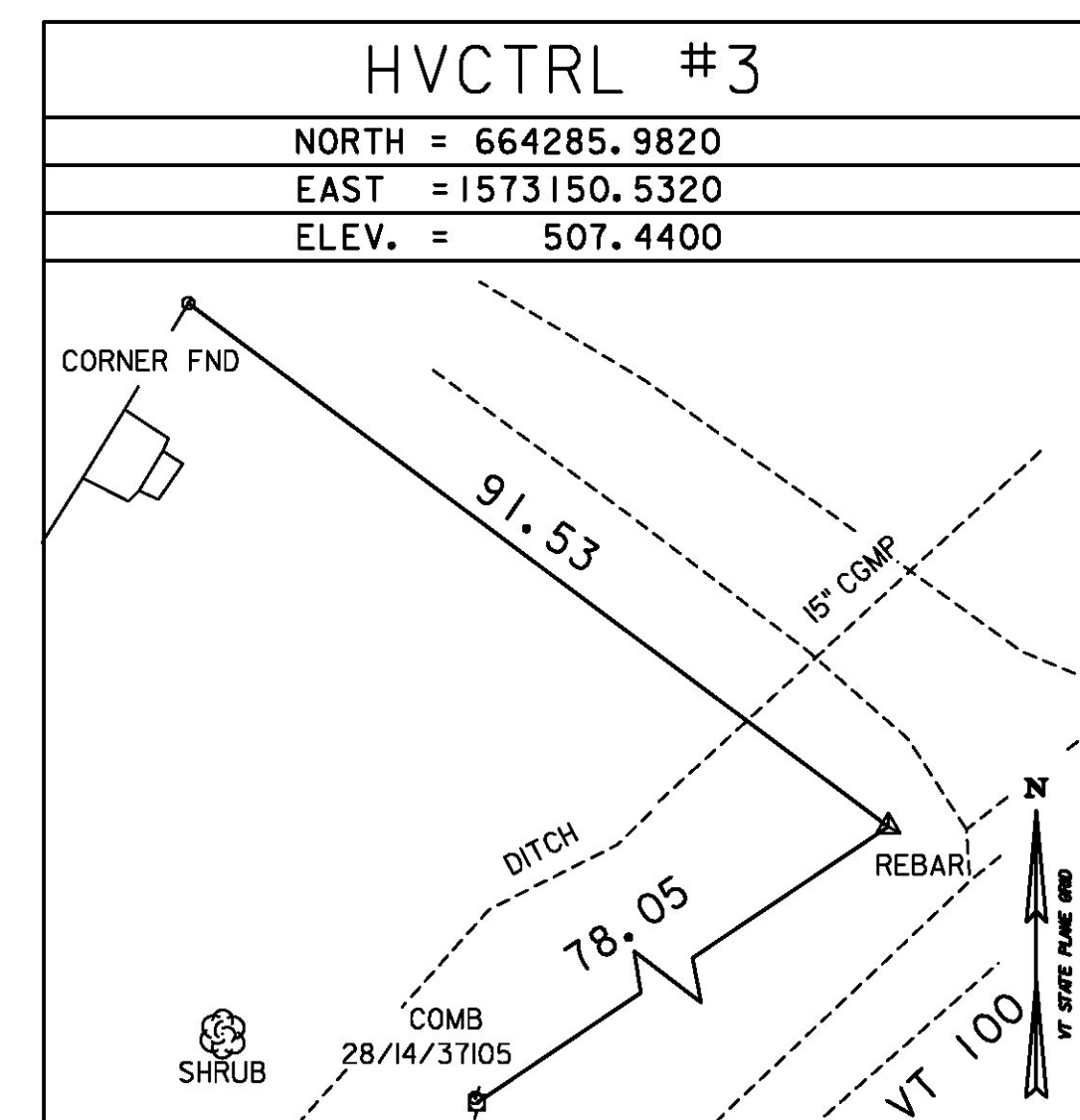
DUXBURY, VT.
 THE MARK IS SET FLUSH WITH GROUND SURFACE IN THE TOP OF A 30 CM DIAMETER CONCRETE MONUMENT, AT THE SITE OF THE FORMER STATE OF VERMONT FARM STORAGE BARN. IT IS 24.7 M SOUTH OF AND 1.5 M HIGHER THAN THE CENTERLINE OF VT ROUTE 100, 9.4 M EAST-NORTHEAST OF THE CENTERLINE OF A PAVED DRIVE LEADING TO THE BARN, 36.1 M NORTH-NORTHWEST OF THE NORTH CORNER OF THE BARN, 23.1 M EAST-NORTHEAST OF POLE NO 2/2, AND 1.9 M SOUTH OF THE GRAVEL DRIVE LEADING TO HOUSE NO 11.

HVCTRL #2
 "BEDELL"
 NORTH = 664729.5220
 EAST = 1574008.0820
 ELEV. = 561.2400

DUXBURY, VT.
 1.0 MI (1.6 KM) SOUTH SOUTHWEST OF WATERBURY, 4.4 MI (7.1 KM) WEST NORTHWEST OF MIDDLESEX, AND 5.3 MI (8.5 KM) NORTH OF MORETOWN. TO REACH FROM THE JUNCTION OF VERMONT ROUTE 100 SOUTH AND U.S. ROUTE 2 IN WATERBURY, PROCEED SOUTHWEST ALONG VERMONT ROUTE 100 FOR 0.5 MI (0.8 KM) TO AND OPEN KNOLL AND THE STATION SITE ON THE NORTHEAST SIDE OF ROUTE 100. THE MARK IS A STATE OF VERMONT SURVEY DISK SET IN THE TOP OF A CONCRETE MONUMENT 20 CM IN DIAMETER, FLUSH WITH THE GROUND SURFACE. IT IS LOCATED 252 FT (76.8 M) NORTHWEST OF A CONCRETE HIGHWAY BOUND, 194 FT (59.1 M) NORTHEAST OF THE CENTERLINE OF VERMONT ROUTE 100, 31.46 FT (9.59 M) SOUTH OF A CONCRETE HIGHWAY BOUND, 27 FT (8.2 M) SOUTHWEST OF THE STATE HIGHWAY RIGHT OF WAY FENCE, AND 5 FT (1.5 M) NORTHEAST OF A STEEL WITNESS POST. OWNERSHIP IS THE STATE OF VERMONT.

*GPS CONTROL PROVIDED BY VT GSU 2016

TRAVERSE TIES



*TRAVERSE COMPLETED BY: G.HITCHCOCK PC/ B.HERRING, K.KELLY, 4/05/2016

CHANNEL ALIGNMENT

HORIZONTAL ALIGNMENT NAME: CHANNEL ALIGNMENT

Element	STATION	NORTHING	EASTING
Element: Linear	POB 19+25.00	664034.3448	1572799.524
	PI 20+25.00	664034.5307	1572899.524
	Tangential Direction:	N 89°53'36.72" E	
	Tangential Length:	100	
Element: Linear	PI 20+25.00	664034.5307	1572899.524
	PI 22+75.00	664103.6964	1573139.766
	Tangential Direction:	N 73°56'19.85" E	
	Tangential Length:	250	
Element: Linear	PI 22+75.00	664103.6964	1573139.766
	POE 23+75.00	664104.5855	1573239.762
	Tangential Direction:	N 89°29'26.12" E	
	Tangential Length:	100	

MAINLINE ALIGNMENT

HORIZONTAL ALIGNMENT NAME: BASELINE VT 100

Element	STATION	NORTHING	EASTING
Element: Linear	POB 287+51.15	663486.4469	1572645.853
	PC 289+51.36	663661.7050	1572742.653
	Tangential Direction:	N 28°54'47.28" E	
	Tangential Length:	200.21	
Element: Circular	PC 289+51.36	663661.7050	1572742.653
	PI 290+51.37	663749.2493	1572791.006
	CC 291+51.36	660891.5502	1577758.062
	PT 291+51.36	663835.0527	1572842.385
	Radius:	5729.58	
	Delta:	2°00'00.00" Right	
	Degree of Curvature:	1°00'00.00"	
	Length:	200	
	Tangent:	100.01	
	Chord:	199.99	
	Middle Ordinate:	0.87	
	External:	0.87	
	Tangent Direction:	N 28°54'47.28" E	
	Radial Direction:	S 61°05'12.72" E	
	Chord Direction:	N 29°54'47.28" E	
	Radial Direction:	S 59°05'12.72" E	
	Tangent Direction:	N 30°54'47.28" E	
Element: Linear	PT 291+51.36	663835.0527	1572842.385
	PC 293+25.55	663984.4984	1572931.873
	Tangential Direction:	N 30°54'47.28" E	
	Tangential Length:	174.19	

HORIZONTAL ALIGNMENT NAME: BASELINE VT 100 (CONTINUED)

Element	STATION	NORTHING	EASTING
Element: Circular	PC 293+25.55	663984.4984	1572931.873
	PI 298+75.05	664455.9369	1573214.17
	CC 303+43.66	663423.8305	1573868.193
	PT 303+43.66	664509.9043	1573761.009
	Radius:	1091.35	
	Delta:	53°27'02.22" Right	
	Degree of Curvature:	5°14'59.97"	
	Length:	1018.11	
	Tangent:	549.5	
	Chord:	981.59	
	Middle Ordinate:	116.59	
	External:	130.53	
	Tangent Direction:	N 30°54'47.28" E	
	Radial Direction:	S 59°05'12.72" E	
	Chord Direction:	N 57°38'18.39" E	
	Radial Direction:	S 5°38'10.50" E	
	Tangent Direction:	N 84°21'49.50" E	
Element: Linear	PT 303+43.66	664509.9043	1573761.009
	POE 305+43.66	664529.5465	1573960.039
	Tangential Direction:	N 84°21'49.50" E	
	Tangential Length:	200	

DATUM	
VERTICAL	NAVD 88
HORIZONTAL	NAD 83 (1996)
ADJUSTMENT	N/A

TYLIN INTERNATIONAL

PROJECT NAME:	DUXBURY
PROJECT NUMBER:	BF 013-4(47)
FILE NAME:	z16B00+1.dgn
PROJECT LEADER:	J. OLUND
DESIGNED BY:	J. HOWE
TIE SHEET	
PLOT DATE:	5/23/2016
DRAWN BY:	VTRANS
CHECKED BY:	J. HOWE
SHEET	10 OF 69