

DURABLE RAILROAD CROSSING SYMBOL, THERMOPLASTIC  
OR SPECIAL PROVISION (DURABLE RAILROAD CROSSING SYMBOL, POLYUREA) (28 MILS)  
U.S. ROUTE 7:  
RAILROAD CROSSING, LT (1 EA)  
RAILROAD CROSSING, RT (1 EA)

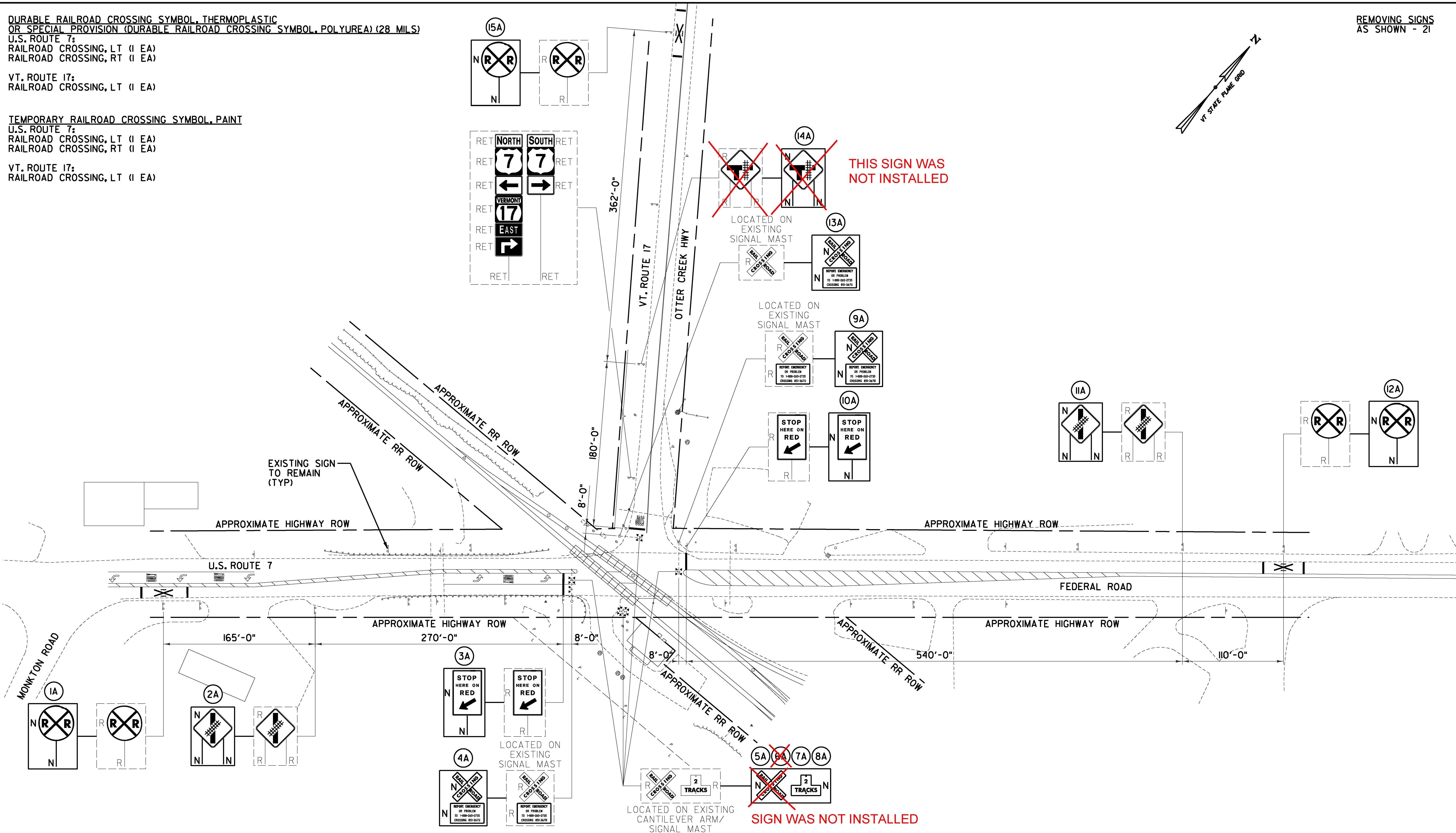
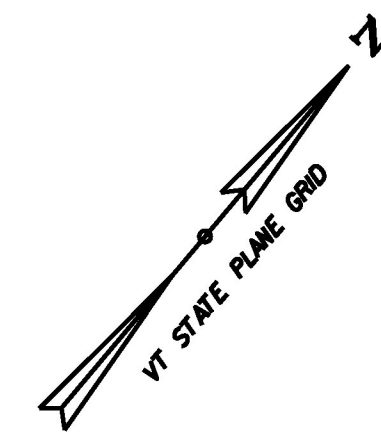
VT. ROUTE 17:  
RAILROAD CROSSING, LT (1 EA)

TEMPORARY RAILROAD CROSSING SYMBOL, PAINT

U.S. ROUTE 7:  
RAILROAD CROSSING, LT (1 EA)  
RAILROAD CROSSING, RT (1 EA)

VT. ROUTE 17:  
RAILROAD CROSSING, LT (1 EA)

REMOVING SIGNS  
AS SHOWN - 21



**SIGNING & STRIPING PLAN**  
**TOWN OF NEW HAVEN**  
**U.S. ROUTE 7**  
**MM 5.47**  
**AARDOT 851-367U**  
**VERMONT RAILWAY**  
**NORTHERN SUBDIVISION**  
**MP 95.27**  
**HIGHWAY CROSSING**

<b>NOT TO SCALE</b>	
PROJECT NAME: MIDDLEBURY - FERRISBURGH	PROJECT NUMBER: NH SURF (55)
FILE NAME: z15v015rrssp.dgn	PLOT DATE: 3/29/2016
PROJECT LEADER: D.E.G.	DRAWN BY: C.A.K.
DESIGNED BY: M.J.M.	CHECKED BY: D.W.E.
SIGNING & STRIPING PLAN A	SHEET 87 OF 96



FILE NAME = W:\Projects\2015\NH\015\Consult\Towns\Ra1\z15v015rrssp.dgn  
DATE/TIME = 3/29/2016  
USER = 1459