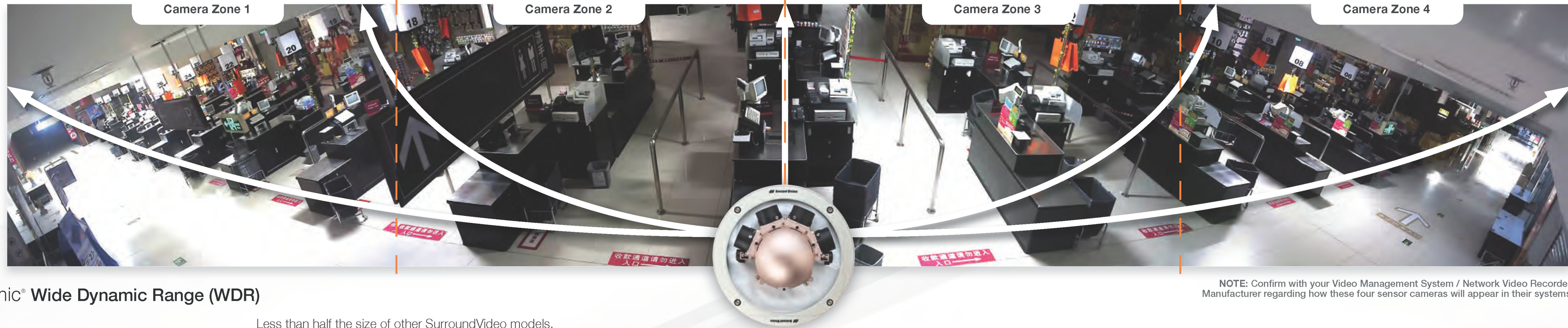


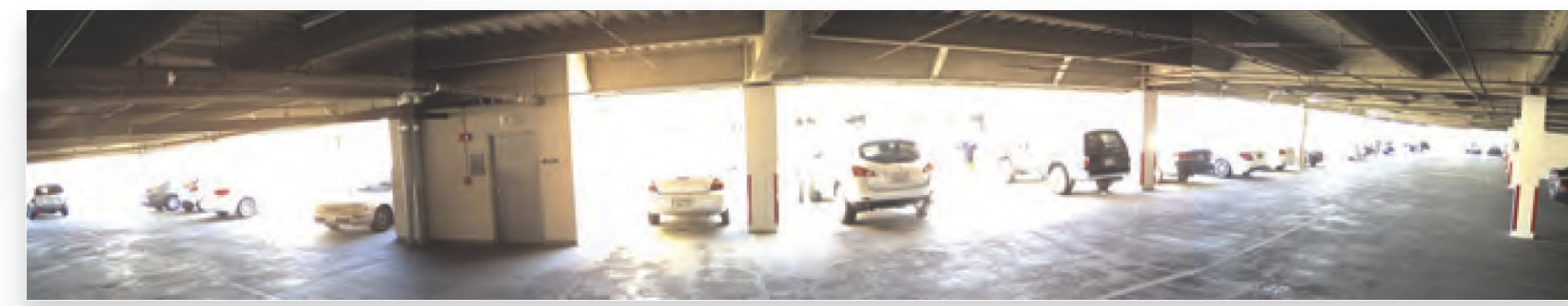
Higher Resolution up to 40 Megapixels + Panoramic Field of View = Greater ROI

Arecont Vision megapixel technology delivers superior image quality and reduces overall system costs by covering larger areas with fewer cameras. An area typically requiring multiple pan-tilt-zoom (PTZ) cameras or multiple fixed cameras can be covered with a single SurroundVideo® panoramic camera. The cameras deliver comprehensive coverage and forensic detail, all without the need for an operator to direct them or the propensity to be facing the wrong way when an incident occurs. Highly cost-efficient solutions, SurroundVideo panoramic cameras virtually obsolete the need for and related expense of PTZ cameras.

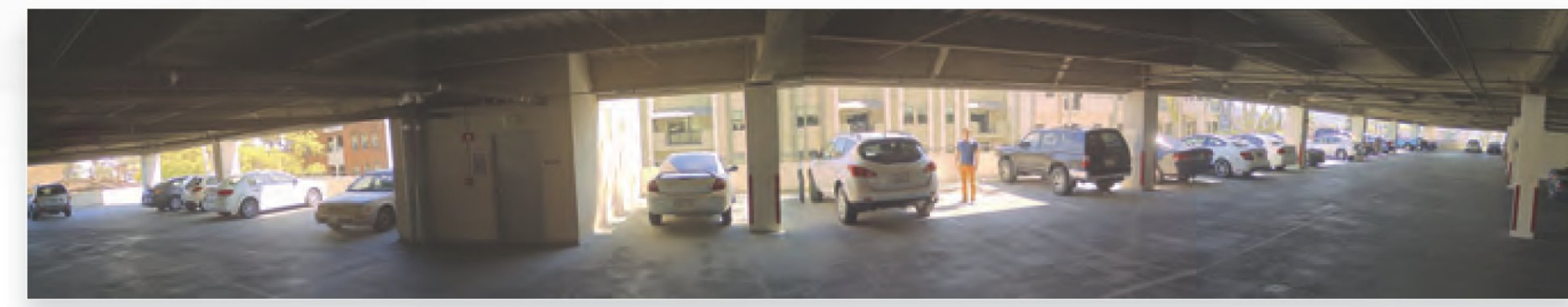


NOTE: Confirm with your Video Management System / Network Video Recorder Manufacturer regarding how these four sensor cameras will appear in their systems

Compact 180° and 360° MegaDynamic® Wide Dynamic Range (WDR)

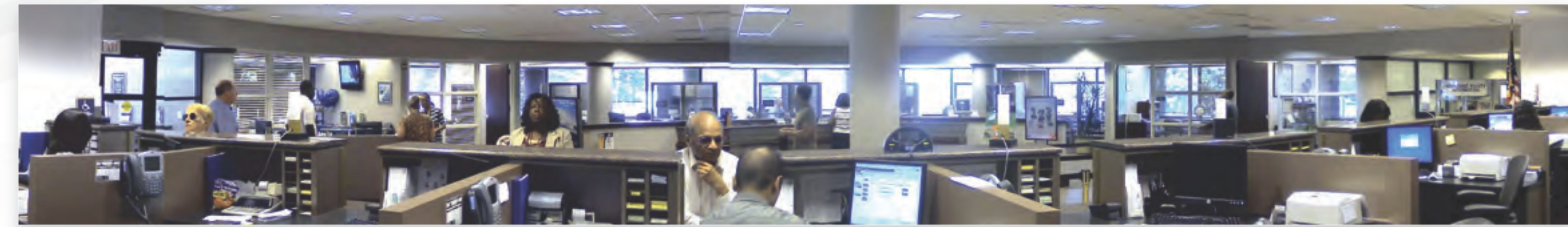


Megapixel image without WDR

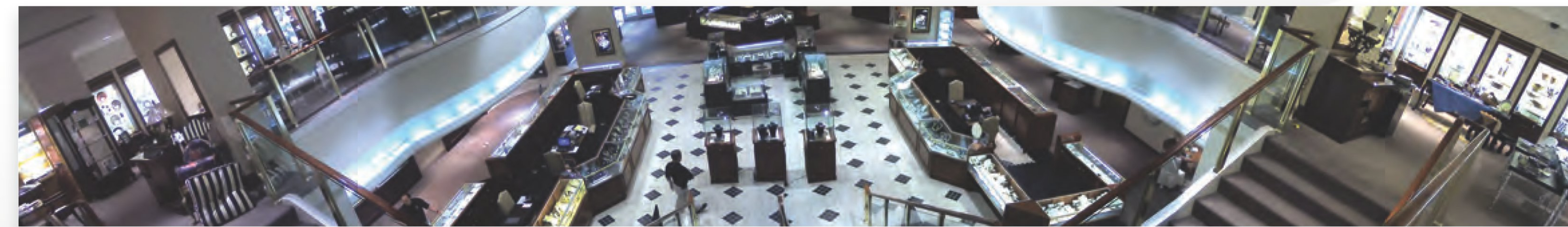


Megapixel image with WDR

Less than half the size of other SurroundVideo models, the 12MP SurroundVideo WDR cameras (AV12186DN and AV12366DN) produces clear images in extreme lighting conditions. Our WDR technology delivers a dynamic range of up to 100dB at full resolution and without lowering frame rates, maximizing the amount of detail in both bright and dark areas of a scene. The WDR performance of Arecont Vision cameras represents an up to 50dB improvement (300x) in dynamic range compared to non-WDR cameras.



Stitched image from a SurroundVideo 180° camera in a banking environment



Stitched image from a SurroundVideo 180° camera in a retail environment

Extended Motion Detection*



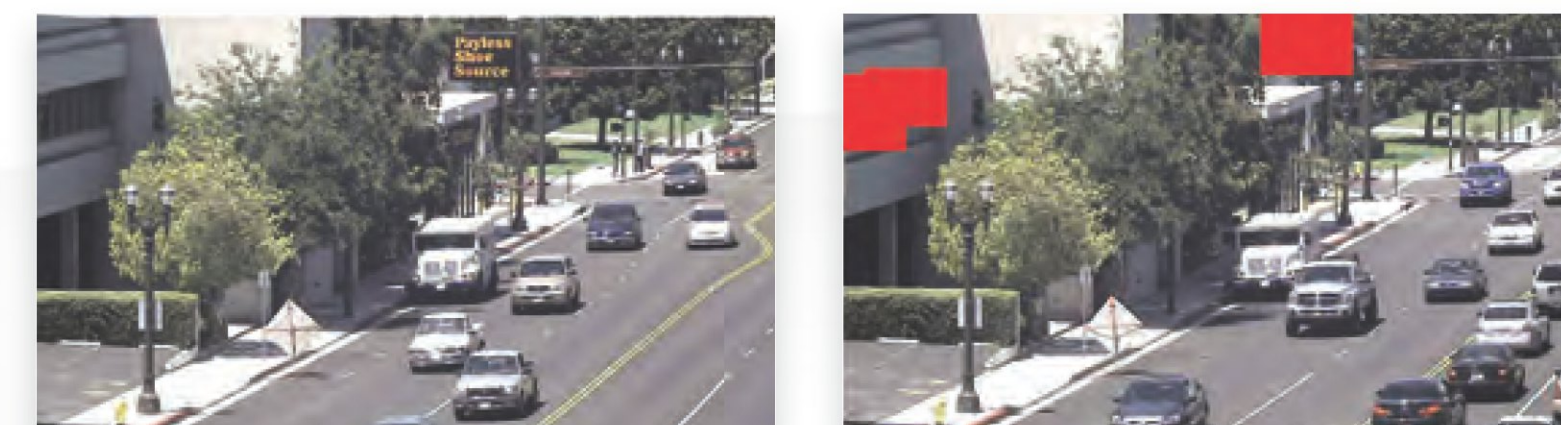
64 Zones

1,024 Zones

Extended motion detection offers a high granularity grid of 1,024 distinct motion detection zones.

*Examples shown with one of four sensors

Privacy Mask*



Normal

Masked

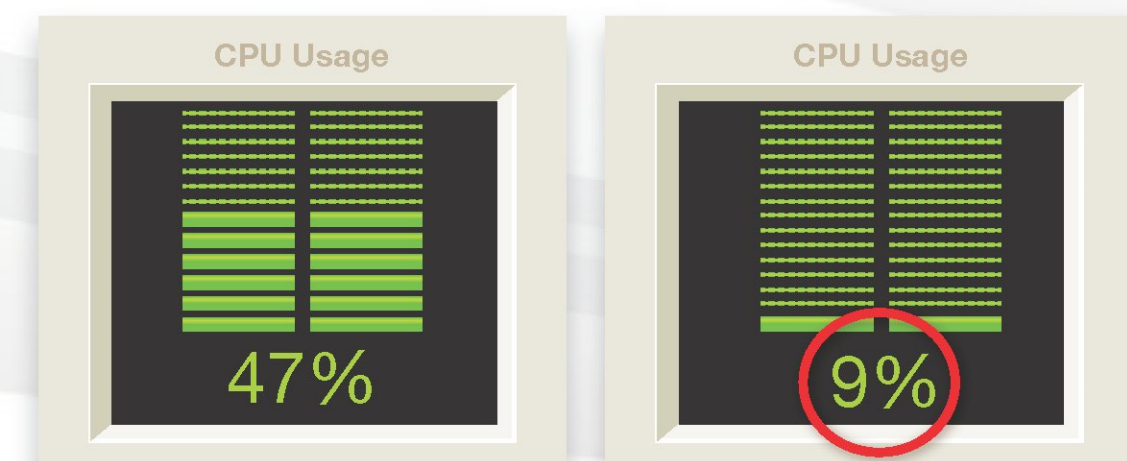
Privacy mask is the ability to select multiple regions of an arbitrary shape and block the video. It is supported by both HTTP and TFTP protocols, and features an on-board web interface.

*Examples shown with one of four sensors

Compliant H.264 Compression

SurroundVideo's compliant implementation of H.264 allows full frame rates and full resolution without sacrificing image quality. With bit rate control, the CPU load is decreased at both the client (decompression) side and the server/storage side, allowing lower bandwidth and storage relative to MJPEG. Real Time Streaming Protocol (RTSP) allows for compatibility with media players such as Apple QuickTime®, VLC and others.

H.264 Decompression (example)



2MP with live video in MJPEG

2MP with live video in H.264

Product Comparison



Model	Panoramic Configuration	Sensor	Resolution	Max Frame Rate @ Full Resolution	Minimum Illumination	Lens	WDR	H.264 MJPEG	True Day/Night	Binning Mode	Heater/Blower Option
AV8185DN	180°	8MP (2MP x 4)	6400 x 1200	6fps	Color: 0.2 Lux B/W: 0 Lux, IR Sensitive	CS, 7.8mm, 1/2", F1.8, IR, H-FOV = 47°	•	•	•	•	•
AV8365DN	360°	8MP (2MP x 4)	6400 x 1200	6fps	Color: 0.2 Lux B/W: 0 Lux, IR Sensitive	CS, 3.5mm, 1/2", F1.8, IR, H-FOV = 96°	•	•	•	•	•
AV8185CO	180°	8MP (2MP x 4)	6400 x 1200	6fps	Color: 0.2 Lux	CS, 7.8mm, 1/2", F1.8, IR, H-FOV = 47°	•	•	•	•	•
AV8365CO	360°	8MP (2MP x 4)	6400 x 1200	6fps	Color: 0.2 Lux	CS, 3.5mm, 1/2", F1.8, IR, H-FOV = 96°	•	•	•	•	•
AV12186DN	180°	12MP (3MP x 4)	8192 x 1536	5.2fps	Color (Non-Binning): 0.5 Lux Color (Binning): 0.25 Lux B/W: 0 Lux, IR Sensitive	M12, 5.4mm, 1/3.2", F2.0, IR, H-FOV = 47°	•	•	•	•	Comes with Blower
AV12366DN	360°	12MP (3MP x 4)	8192 x 1536	5.2fps	Color (Non-Binning): 0.5 Lux Color (Binning): 0.25 Lux B/W: 0 Lux, IR Sensitive	M12, 2.6mm, 1/2.5", F2.0, IR, H-FOV = 96°	•	•	•	•	Comes with Blower
AV20185DN	180°	20MP (5MP x 4)	10240 x 1920	3.5fps	Color (Non-Binning): 0.3 Lux Color (Binning): 0.15 Lux B/W: 0 Lux, IR Sensitive	CS, 6.2mm, 1/2.5", F1.8, IR, H-FOV = 47°	•	•	•	•	•
AV20365DN	360°	20MP (5MP x 4)	10240 x 1920	3.5fps	Color (Non-Binning): 0.3 Lux Color (Binning): 0.15 Lux B/W: 0 Lux, IR Sensitive	CS, 3.5mm, 1/2.5", F1.8, IR, H-FOV = 96°	•	•	•	•	•
AV20185CO	180°	20MP (5MP x 4)	10240 x 1920	3.5fps	Color (Non-Binning): 0.3 Lux Color (Binning): 0.15 Lux	CS, 6.2mm, 1/2.5", F1.8, IR, H-FOV = 47°	•	•	•	•	•
AV20365CO	360°	20MP (5MP x 4)	10240 x 1920	3.5fps	Color (Non-Binning): 0.3 Lux Color (Binning): 0.15 Lux	CS, 3.5mm, 1/2.5", F1.8, IR, H-FOV = 96°	•	•	•	•	•
AV40185DN	180°	40MP (10MP x 4)	14592 x 2752	1.5fps	Color (Non-Binning): 0.3 Lux Color (Binning): 0.15 Lux B/W: 0 Lux, IR Sensitive	CS, 7.2mm, 1/2.3", F2.4, IR, H-FOV = 47°	•	•	•	•	•