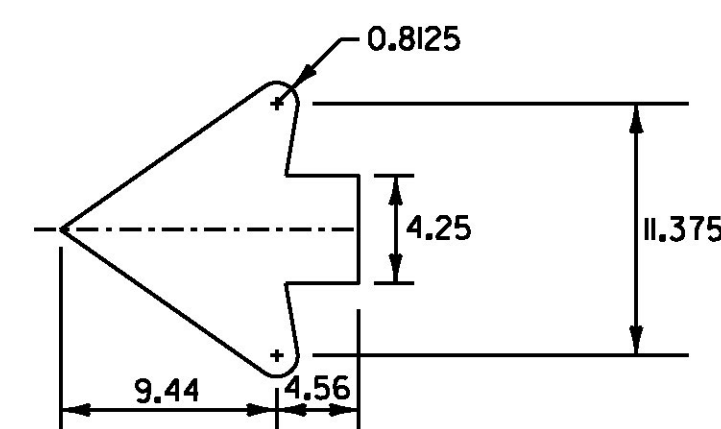
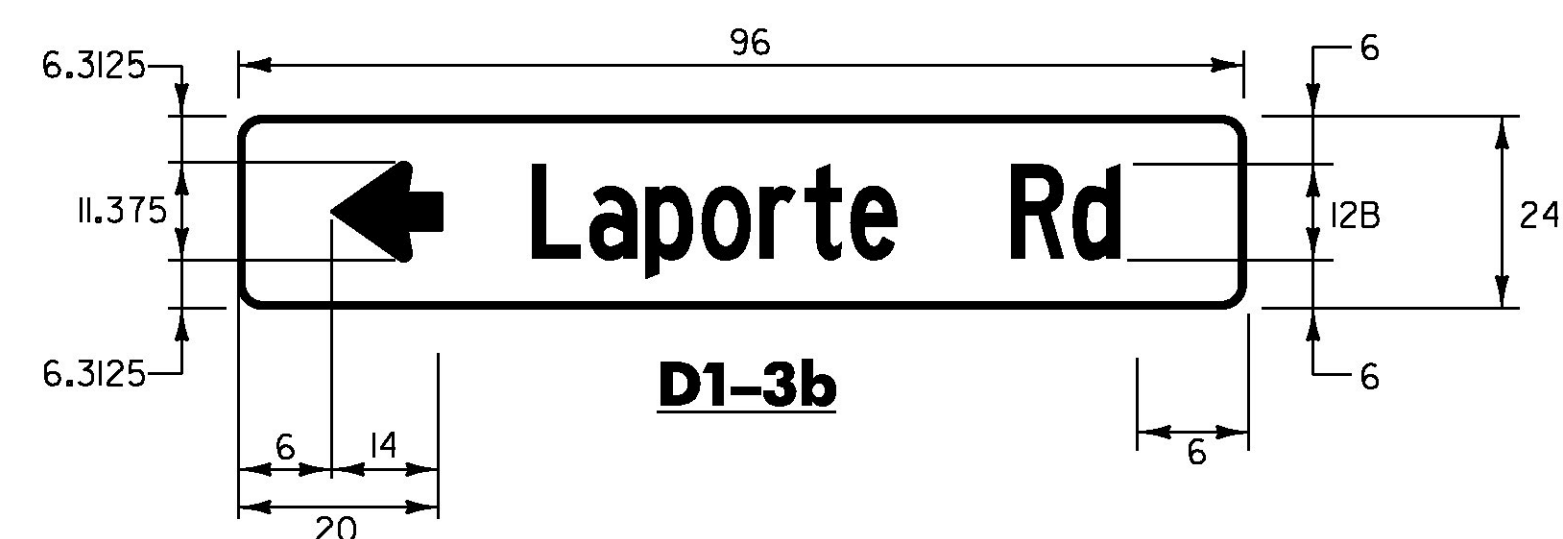


BORDER DETAIL

TRIM CORNERS



STANDARD SHS 4.5" ARROW WITH SHORT SHAFT

SIGN NOTES

NOTES:

DESIGN

LETTERS, DIGITS, ARROWS, SYMBOLS, SPACING, AND TEXT DIMENSIONS SHALL CONFORM WITH THE STANDARD HIGHWAY SIGN BOOK AND DESIGNS PRESCRIBED IN THE MANUAL OF UNIFORM TRAFFIC CONTROL DEVICES (MUTCD) ADOPTED BY THE U.S DEPARTMENT OF TRANSPORTATION, FEDERAL HIGHWAY ADMINISTRATION (FHWA) DATED 2009 WITH LATEST REVISIONS.

MATERIALS

THE SIGN BASE MATERIALS USED FOR THESE GUIDE SIGNS SHALL BE 0.100" FLAT SHEET ALUMINUM.

REFLECTORIZATION

THE BACKGROUND RETROREFLECTIVE MATERIAL SHALL BE ASTM VIII OR TYPE IX RETROREFLECTIVE SHEETING APPLIED TO THE ENTIRE SIGN. THE TEXT, BORDERS, AND SYMBOLS SHALL BE LETTERING FILM OR SILK SCREENED.

COLORS

GUIDE SIGNS SHALL HAVE WHITE TEXT, BORDERS, AND SYMBOLS ON RETROREFLECTIVE GREEN BACKGROUND. COLOR SHALL CONFORM TO THE COLORS ADOPTED BY AASHTO AND APPROVED BY FHWA SPECIFICATIONS. GUIDE SIGNS SHALL MEET THE VERMONT STANDARD SPECIFICATIONS.

SPECIFICATIONS

GUIDE SIGNS SHALL MEET THE VERMONT STANDARD SPECIFICATIONS FOR CONSTRUCTION "TRAFFIC SIGNS"

MOUNTING

ALL MAST ARM MOUNTED SIGNS SHALL BE MOUNTED ON THE ARM USING A FIXED MOUNT SYSTEM.
ALL MAST ARM MOUNTED SIGNS SHALL HAVE SAFETY CABLES.

PROJECT NAME: MORRISTOWN	PLOT DATE: 5/13/2016
PROJECT NUMBER: STPG SGNL(47)	DRAWN BY: J. SANTACRUCE
FILE NAME: z151047sd1.dgn	DESIGNED BY: J. SANTACRUCE
PROJECT LEADER: J. SANTACRUCE	CHECKED BY: B. COLBURN
SIGN DETAIL SHEET	SHEET 42 OF 58

