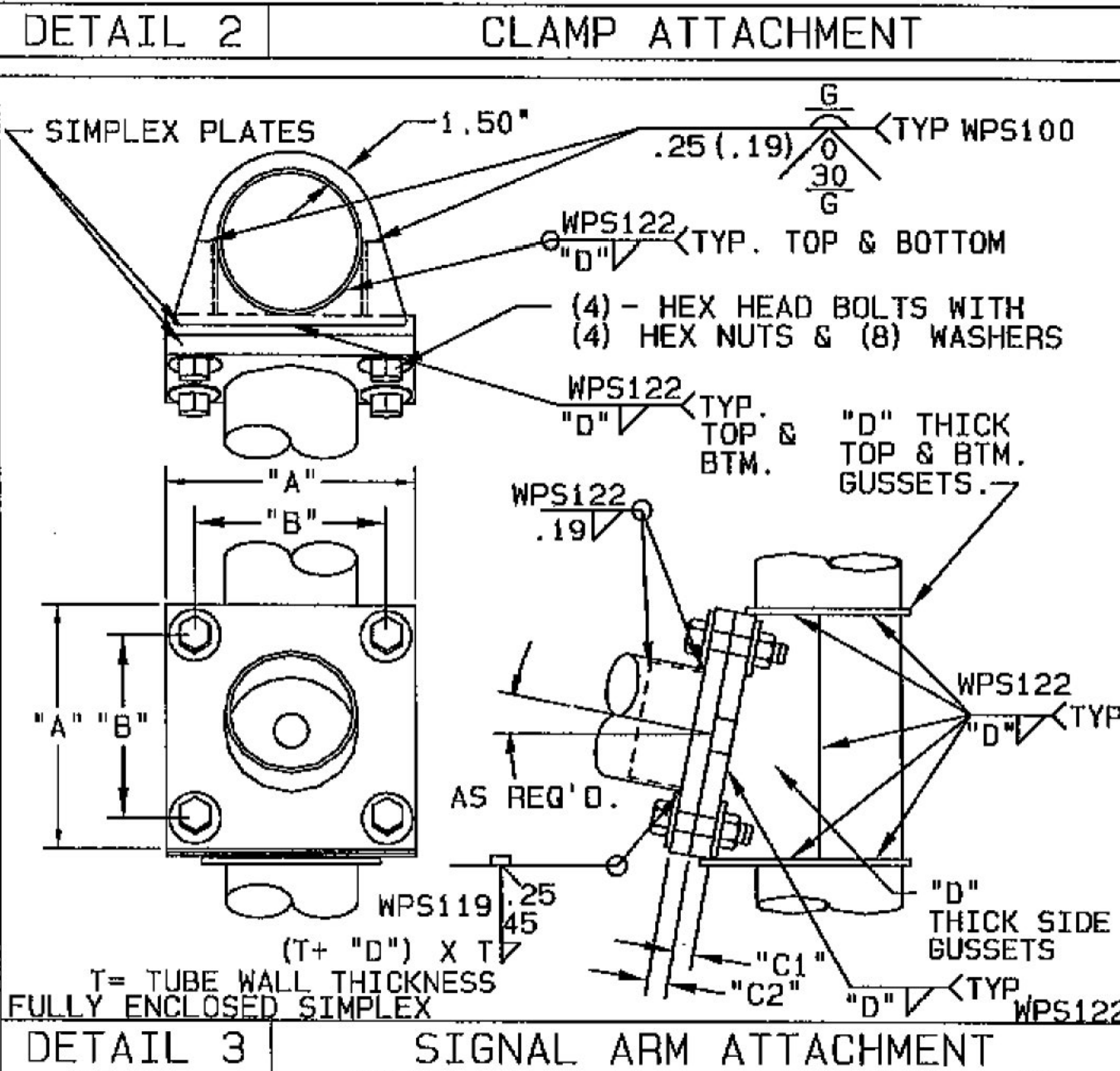
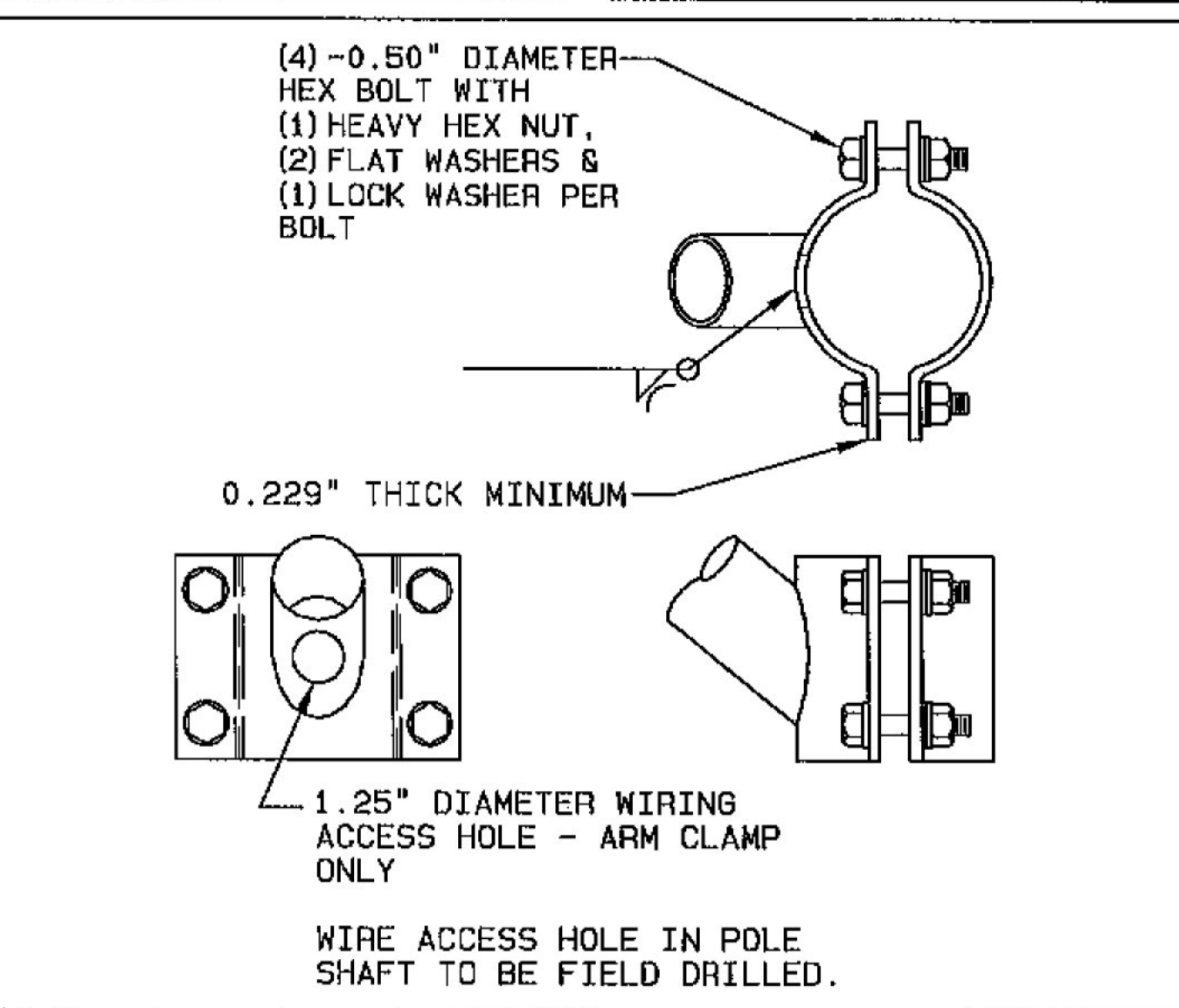
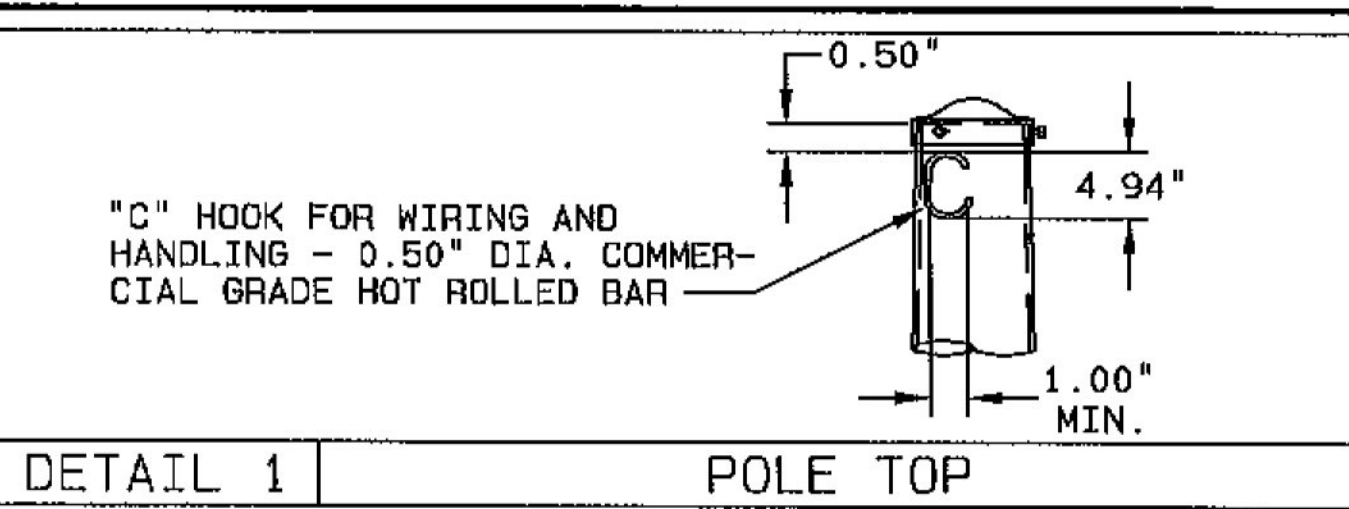


**MATERIAL DATA**

COMPONENT	ASTM DESIGNATION	MIN. YIELD (KSI)	COMPONENT	ASTM DESIGNATION	MIN. YIELD (KSI)
TAPERED TUBES	A595 GR. A OR A572	55	ANCHOR BOLTS	F1554 GR. 55	55
POLE BASE	A36	36	GALVANIZING- HARDWARE	A153	
LUMINAIRE ARM PIPE	A36	36			
SIGNAL ARM CONNECTION	A36	36			
SIGNAL ARM CONN. BOLTS	A325				

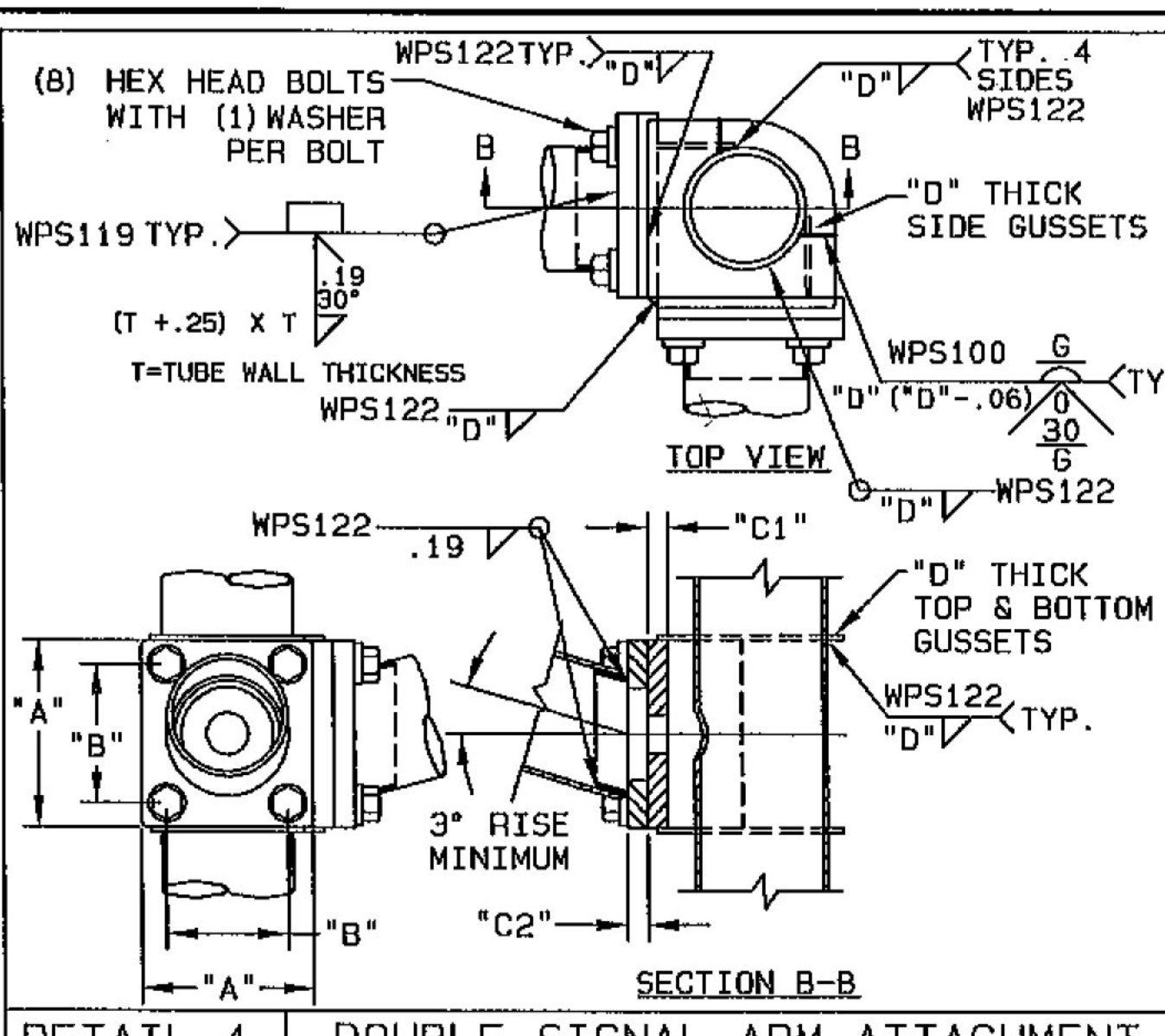
**SYSTEM:** FINISH PAINT/GALVANIZED (FPGV)  
**BASE COAT:** HOT-DIP GALVANIZED TO ASTM A123  
**PRIME COAT:** NONE  
**FINISH COAT:** TGIC OR URETHANE POLYESTER POWDER  
**COLOR:** BLACK  
**SPEC:** F-283A

PLEASE VERIFY THAT STANDARD POWDER COAT OVER GALVANIZING IS ACCEPTABLE.



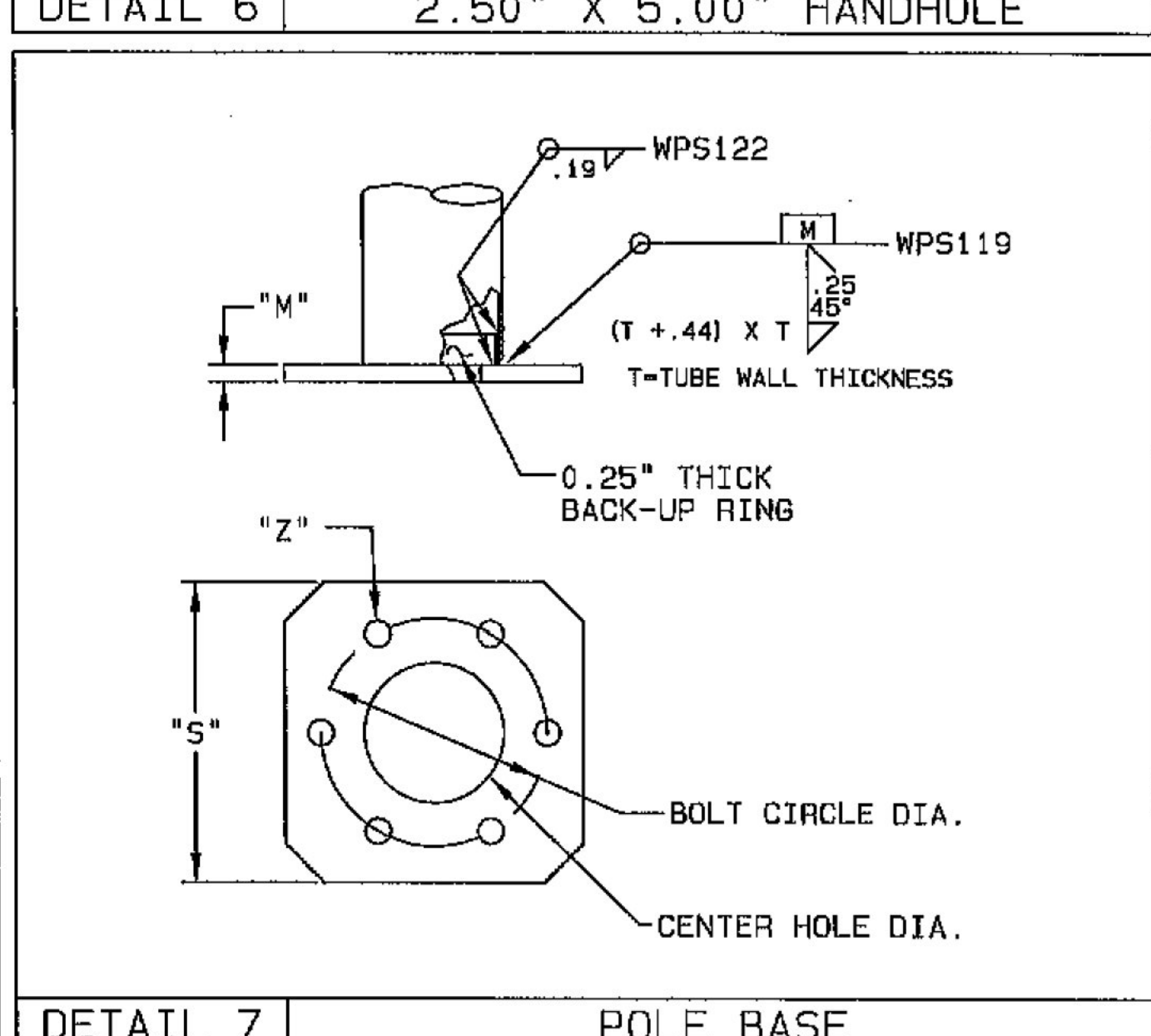
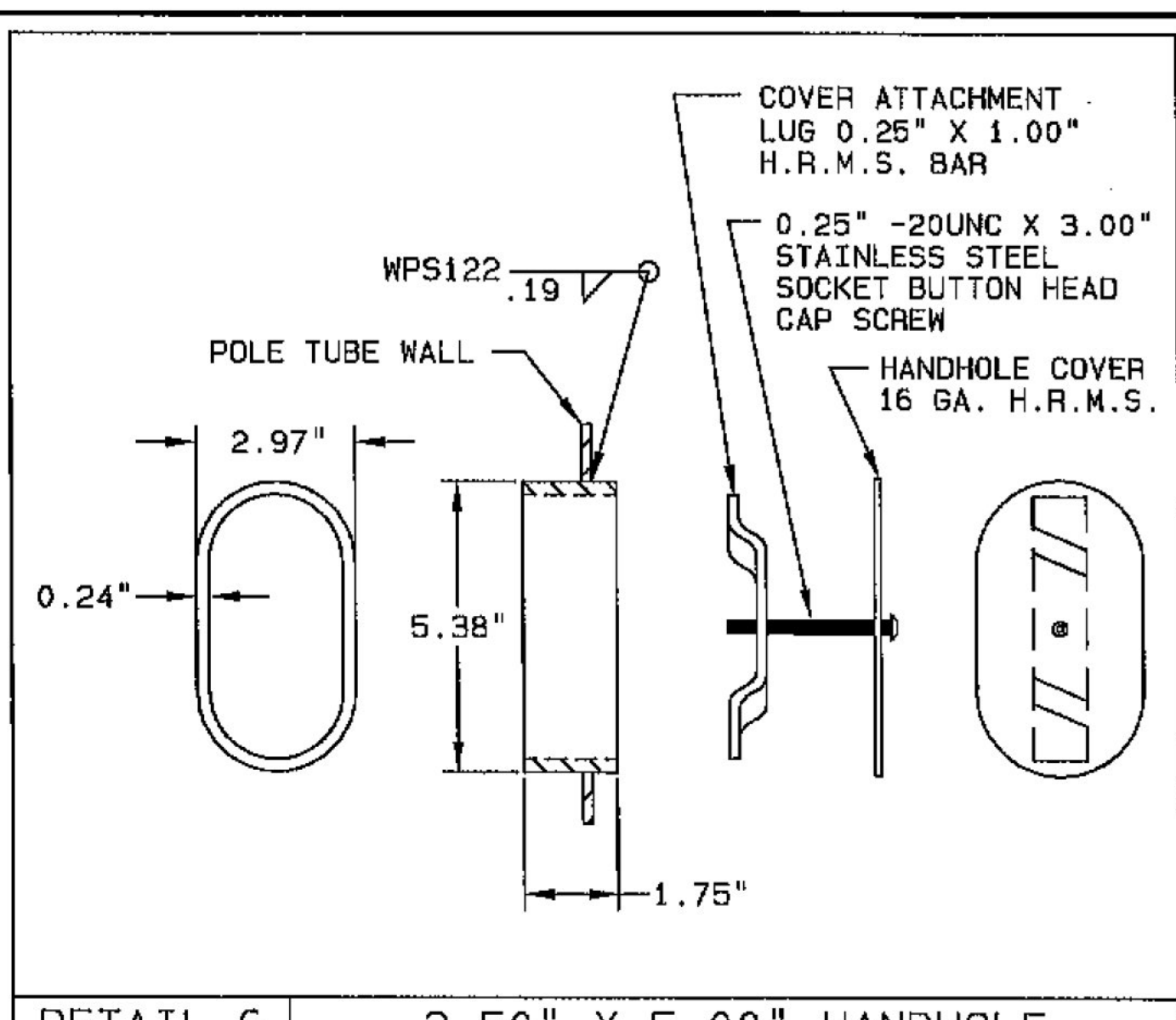
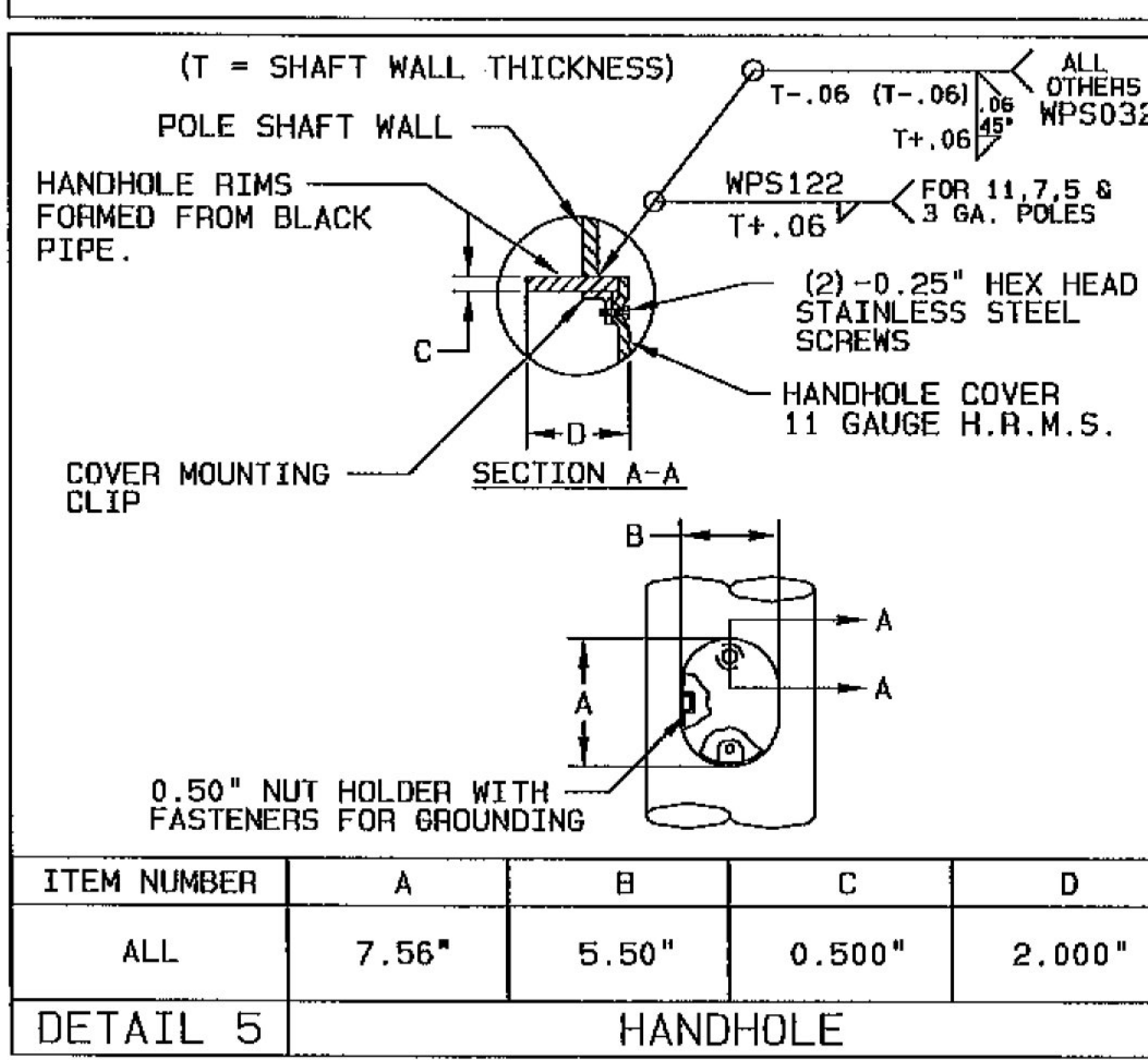
**SINGLE MAST ARM ATTACHMENT DATA**

POLE NO./ ARM LENGTH	"A" (IN)	"B" (IN)	"C1" (IN)	"C2" (IN)	CENTER HOLE DIA. (IN)	"D" (IN)	"E" (IN) X (IN)
MAP-2/50'	20.50	17.00	2.00	2.00	7.00"	0.375	1.25 X 6.00
MAP-4/50'	20.50	17.00	2.00	2.00	7.00"	0.375	1.25 X 6.00
MAP-6/55'	21.25	18.00	2.00	2.00	7.50"	0.375	1.25 X 6.00
MAP-7/50'	20.50	17.00	2.00	2.00	7.00"	0.375	1.25 X 6.00
MAP-8/30'	17.75	14.50	2.00	2.00	8.50"	0.375	1.25 X 6.00
MAP-9/50'	20.50	17.00	2.00	2.00	7.00"	0.375	1.25 X 6.00
MAP-10/45'	19.25	16.00	2.00	2.00	8.00"	0.375	1.25 X 6.00
MAP-11/25'	17.75	14.50	2.00	2.00	7.50"	0.375	1.25 X 6.00
MAP-12/45'	19.25	16.00	2.00	2.00	8.00"	0.375	1.25 X 6.00



**DOUBLE MAST ARM ATTACHMENT DATA**

POLE NO./ ARM LENGTH	"A" (IN)	"B" (IN)	"C1" (IN)	"C2" (IN)	CENTER HOLE DIA. (IN)	"D" (IN)	"E" (IN) X (IN)
MAP-1/40'	21.25	18.00	2.00	2.00	5.00"	0.375	1.25 X 6.00
MAP-1/30'	21.25	18.00	2.00	2.00	5.00"	0.375	1.25 X 6.00
MAP-3/30'	17.75	14.50	2.00	2.00	8.50	0.375	1.25 X 6.00
MAP-3/30'	17.75	14.50	2.00	2.00	8.50	0.375	1.25 X 6.00
MAP-5/30'	17.75	14.50	2.00	2.00	8.50	0.375	1.25 X 6.00
MAP-5/30'	17.75	14.50	2.00	2.00	8.50	0.375	1.25 X 6.00
MAP-13/45'	21.25	18.00	2.00	2.00	5.00	0.375	1.25 X 6.00
MAP-13/30'	21.25	18.00	2.00	2.00	7.00	0.375	1.25 X 6.00
MAP-14/45'	21.25	18.00	2.00	2.00	5.00	0.375	1.25 X 6.00
MAP-14/30'	21.25	18.00	2.00	2.00	7.00	0.375	1.25 X 6.00



**Approved**

BY: M. LaCroix  
 DATE: 06/01/2018  
 RESUBMIT: No  
 RECEIVED: June 1, 2018  
 CKD BY: K. Record

**STATE OF VERMONT  
AGENCY OF TRANSPORTATION**

REV	DATE	BY	DESCRIPTION	AGENT	TITLE	VALMONT INDUSTRIES, INC. RESERVES THE RIGHT TO INSTALL VARIOUS, ENGINEER APPROVED, MATERIAL HANGING ACCOMMODATIONS TO FACILITATE THE MANUFACTURING PROCESS.	ORDER NUMBER: 369955-P1
D	05/31/18	AEM1	REVISED ARM ORIENTATIONS POLE #14	HIGHWAY TECH	VAOT	VALMONT INDUSTRIES, INC. RESERVES THE RIGHT TO INSTALL VARIOUS, ENGINEER APPROVED, MATERIAL HANGING ACCOMMODATIONS TO FACILITATE THE MANUFACTURING PROCESS.	PAGE NUMBER: 1 OF 3
C	05/07/18	JTF	REVISED ARM ORIENTATIONS POLES #1 & #14	EAST COAST SIGNALS, INC.	WILLISTON-ESSEX STPG SGNL (46)		DRAWING NUMBER
B	12/21/17	JTF	REVISED PER REQUEST	12305	TRAFFIC SIGNAL STRUCTURES		REV
	08/16/17	JTF		HIGHWAY TECH			VT369955P1
	08/17/17	JTF					D