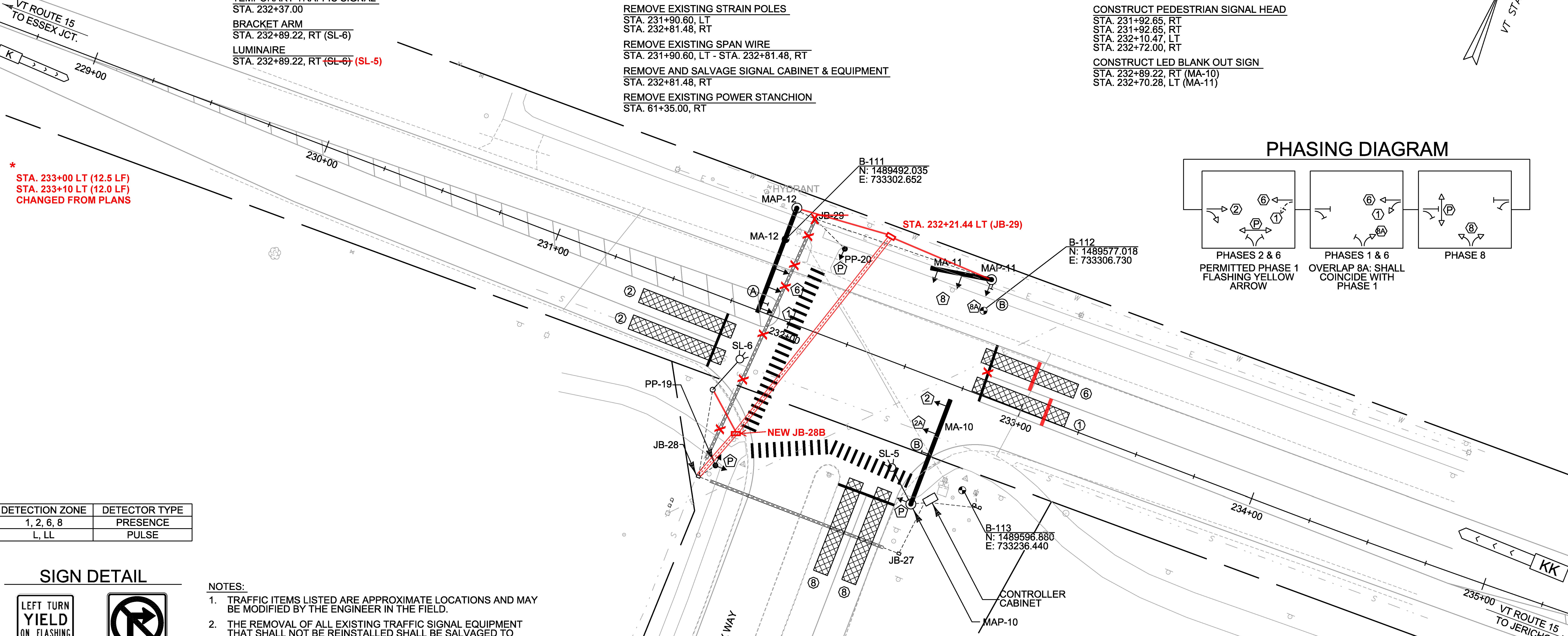
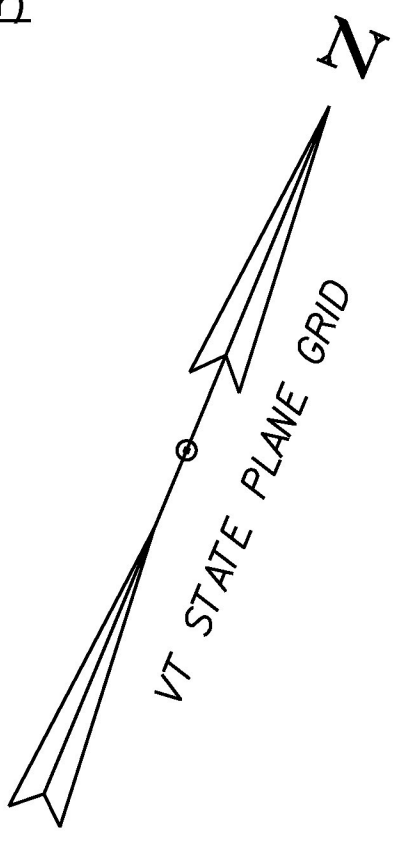


SEED
AS NEEDED
FERTILIZER
AS NEEDED
AGRICULTURAL LIMESTONE
AS NEEDED
TOPSOIL
AS NEEDED
TEMPORARY EROSION MATTING
AS NEEDED
24 INCH STOP BAR, WATERBORNE PAINT
STA. 231+75.46, RT (21.5 LF)
STA. 232+53.77, RT (24.0 LF)
STA. 232+82.47, LT *

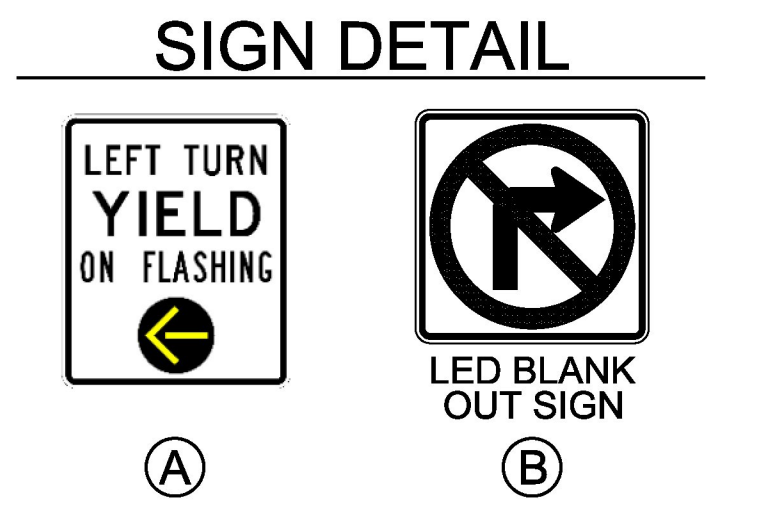
CROSSWALK MARKING, WATERBORNE PAINT
~~STA. 231+75.46, RT~~ STA. 232+10 RT TO STA. 232+10 LT (78 LF)
~~STA. 232+53.77, RT~~ STA. 232+10 RT TO STA. 232+75 RT (71 LF)
~~STA. 232+82.47, LT~~
TRAFFIC SIGNS, TYPE A
STA. 231+86.44, LT (MA-12)(LEFT TURN YIELD ON FLASHING)
REMOVING SIGNS
STA. 231+69.93, RT (NO TURN ON RED)
WIRED CONDUIT (2") (SCH 80)
SEE CONDUIT SCHEDULE, TRAFFIC SIGNAL LAYOUT SHEET 12B
ELECTRICAL CONDUIT (2") (SCH 80)
SEE CONDUIT SCHEDULE, TRAFFIC SIGNAL LAYOUT SHEET 12B
TEMPORARY TRAFFIC SIGNAL
STA. 232+37.00
BRACKET ARM
STA. 232+89.22, RT (SL-6)
LUMINAIRE
STA. 232+89.22, RT (SL-6) (SL-5)

STREET LIGHT ASSEMBLY
STA. 231+80.75, RT (SL-6)
STREET LIGHT CONTROL DEVICE
STA. 232+97.27, RT
SPECIAL PROVISION (JUNCTION BOX, HEAVY DUTY)
STA. 232+74.62, RT (JB-27) STA. 231+80 RT (JB-28B)
STA. 231+87.77, RT (JB-28)
STA. 231+95.03, LT (JB-29)
SPECIAL PROVISION (HORIZONTAL DIRECTIONAL DRILLING)(12" CASING PIPE)
STA. 231+87.77, RT - STA. 232+74.62, RT (76') (80.0 LF)
STA. 231+87.77, RT - STA. 231+95.03, LT (106') (110.5 LF) STA. 232+21.44 LT
REMOVAL OF EXISTING TRAFFIC CONTROL SIGNAL SYSTEM (VT ROUTE 15 & ESSEX WAY)
SEE NOTES 2 & 3, THIS SHEET
REMOVE EXISTING STRAIN POLES
STA. 231+90.60, LT
STA. 232+81.48, RT
REMOVE EXISTING SPAN WIRE
STA. 231+90.60, LT - STA. 232+81.48, RT
REMOVE AND SALVAGE SIGNAL CABINET & EQUIPMENT
STA. 232+81.48, RT
REMOVE EXISTING POWER STANCHION
STA. 61+35.00, RT

TRAFFIC CONTROL SIGNAL SYSTEM, INTERSECTION (VT ROUTE 15 & ESSEX WAY)
SEE LIST OF MAJOR EQUIPMENT, TRAFFIC SIGNAL LAYOUT SHEET 10B
CONSTRUCT MAST ARM POLES
STA. 232+89.22, RT (MAP-10)
STA. 232+70.28, LT (MAP-11)
STA. 231+86.44, LT (MAP-12)
CONSTRUCT POWER STANCHION
STA. 232+97.27, RT
CONSTRUCT CONTROLLER CABINET (GROUND MOUNTED)
STA. 232+77.58, RT
CONSTRUCT PEDESTRIAN PEDESTAL POLE
STA. 231+92.87, RT (PP-19)
STA. 232+10.47, LT (PP-20)
CONSTRUCT PEDESTRIAN SIGNAL HEAD
STA. 231+92.65, RT
STA. 231+92.65, RT
STA. 232+10.47, LT
STA. 232+72.00, RT
CONSTRUCT LED BLANK OUT SIGN
STA. 232+89.22, RT (MA-10)
STA. 232+70.28, LT (MA-11)



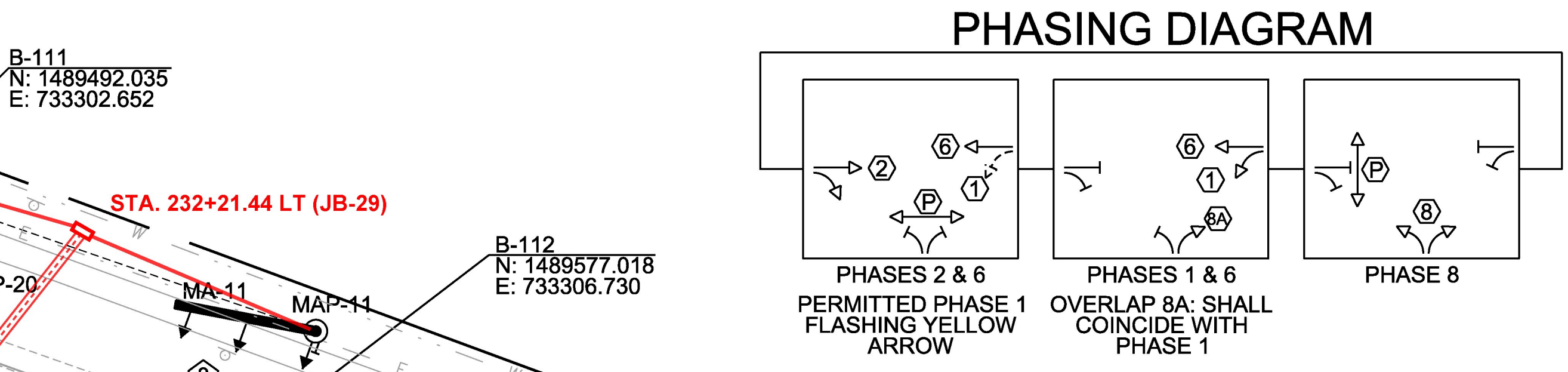
DETECTION ZONE	DETECTOR TYPE
1, 2, 6, 8	PRESENCE
L, LL	PULSE



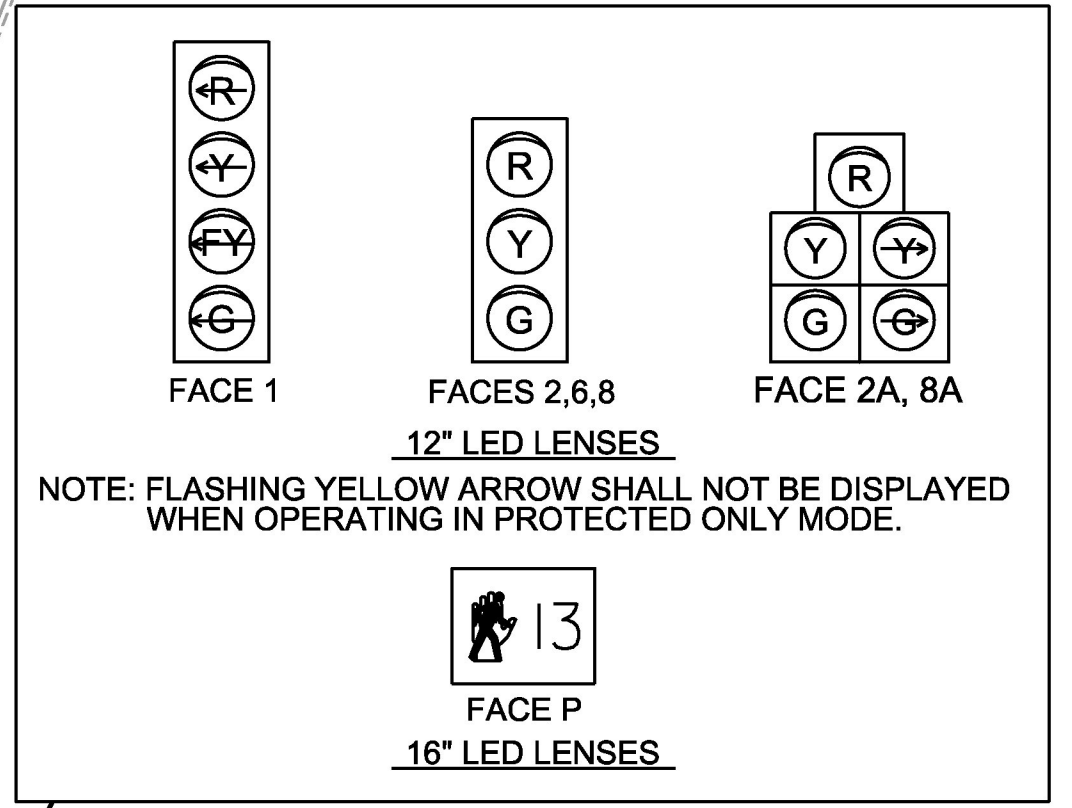
TRAFFIC SIGNAL LEGEND

□ JB	JUNCTION BOX
□ D.JB	DOUBLE JUNCTION BOX
● PP	PEDESTRIAN PEDESTAL POST
→ ②	SIGNAL HEAD WITH PHASE NO.
→ ②	PEDESTRIAN SIGNAL HEAD WITH PED PHASE
---	WIRED CONDUIT
---	WIRED CONDUIT IN ELECTRICAL CONDUIT SLEEVE
—(A)	MAST ARM-MOUNTED SIGN
⊘	STOP BAR DETECTION AREA
⊘	ADVANCE DETECTION AREA

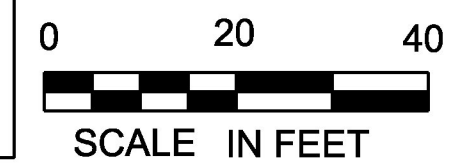
- NOTES:**
- TRAFFIC ITEMS LISTED ARE APPROXIMATE LOCATIONS AND MAY BE MODIFIED BY THE ENGINEER IN THE FIELD.
 - THE REMOVAL OF ALL EXISTING TRAFFIC SIGNAL EQUIPMENT THAT SHALL NOT BE REINSTALLED SHALL BE SALVAGED TO THE AGENCY OF TRANSPORTATION DISTRICT 5 SIGNAL TECHNICIAN, (802) 343-2188. WORK REQUIRED TO PERFORM THIS ACTIVITY SHALL BE PAID FOR UNDER CONTRACT ITEM 678.45 REMOVAL OF EXISTING TRAFFIC CONTROL SIGNAL SYSTEM.
 - REMOVAL OF EXISTING TRAFFIC SIGNAL SYSTEM SHALL NOT OCCUR UNTIL THE PROPOSED SYSTEM IS CONSTRUCTED AND OPERATIONAL. PAYMENT FOR REMOVAL OF THE EXISTING SIGNAL SHALL BE PAID FOR UNDER CONTRACT ITEM 678.45 REMOVAL OF EXISTING TRAFFIC CONTROL SIGNAL SYSTEM.
 - FOR A LIST OF MAJOR EQUIPMENT, CONDUIT SCHEDULE, AND CONTROLLER DATA, SEE TRAFFIC SIGNAL LAYOUT SHEET 10B.
 - A TEMPORARY TRAFFIC SIGNAL MAY BE REQUIRED AT THIS LOCATION. THE CONTRACTOR SHALL BE RESPONSIBLE FOR THE DESIGN OF THE SPAN WIRE FOR LOADING AND THE PLACEMENT OF THE SIGNAL WITHIN THE EXISTING RIGHT OF WAY. THIS SIGNAL SHALL BE PAID FOR UNDER CONTRACT ITEM 678.40 - TEMPORARY TRAFFIC SIGNAL SYSTEM.
 - EXISTING FOUNDATIONS SHALL HAVE THE TOP TWO FEET REMOVED AND FILLED IN. CONDUIT SHALL BE ABANDONED IN PLACE AND CAPPED. PAYMENT SHALL BE INCIDENTAL TO PAY ITEM 678.45 REMOVAL OF EXISTING TRAFFIC CONTROL SIGNAL SYSTEM OR PAY ITEM 679.24 REMOVE STREET LIGHT ASSEMBLY.



PROPOSED SIGNAL FACE ARRANGEMENTS



SEE MAST ARM SECTION SHEET FOR TRAFFIC SIGNAL CLEARANCES.



MS 556: VT ROUTE 15 & ESSEX WAY

PROJECT NAME:	WILLISTON-ESSEX	FILE NAME:	t15i017sig.dgn	PLOT DATE:	3/21/2017
PROJECT NUMBER:	STPG SGNL(46)	PROJECT LEADER:	M. LACROIX	DRAWN BY:	K. RECORD
		DESIGNED BY:	K. RECORD	CHECKED BY:	M. LACROIX
		TRAFFIC SIGNAL LAYOUT SHEET 12A		SHEET	41 OF 66