

24 INCH STOP BAR, WATERBORNE PAINT
 STA. 87+88.39, RT VT 2 EB (23 LF)
 STA. 88+45.98, LT ZEPHYR ROAD (34 LF)
 STA. 88+56.48, LT ZEPHYR ROAD
 STA. 88+90.12, RT MAPLE TREE PLACE (22 LF)
 STA. 88+99.96, LT VT 2 WB (29 LF)

CROSSWALK MARKING, WATERBORNE PAINT
 STA. 88+00.33, RT - STA. 88+01.95, RT (71 LF)
 STA. 88+37.17, LT - STA. 88+74.69, LT (39 LF)

TRAFFIC SIGNS, TYPE A
 STA. 88+36.06, RT (EXISTING MA-1A) (LEFT TURN YIELD ON FLASHING)
 STA. 88+36.06, RT (EXISTING MA-1A) (LEFT TURN YIELD ON FLASHING)

TRAFFIC CONTROL SIGNAL SYSTEM, INTERSECTION (US ROUTE 2 & ZEPHYR ROAD)
 SEE LIST OF MAJOR EQUIPMENT, TRAFFIC SIGNAL LAYOUT SHEET 5C

CONSTRUCT CONTROLLER CABINET (GROUND MOUNTED)
 STA. 88+37.43, RT

CONSTRUCT PEDESTRIAN SIGNAL HEADS
 STA. 87+96.30, LT
 STA. 88+10.08, RT
 STA. 88+32.47, LT
 STA. 88+77.63, RT

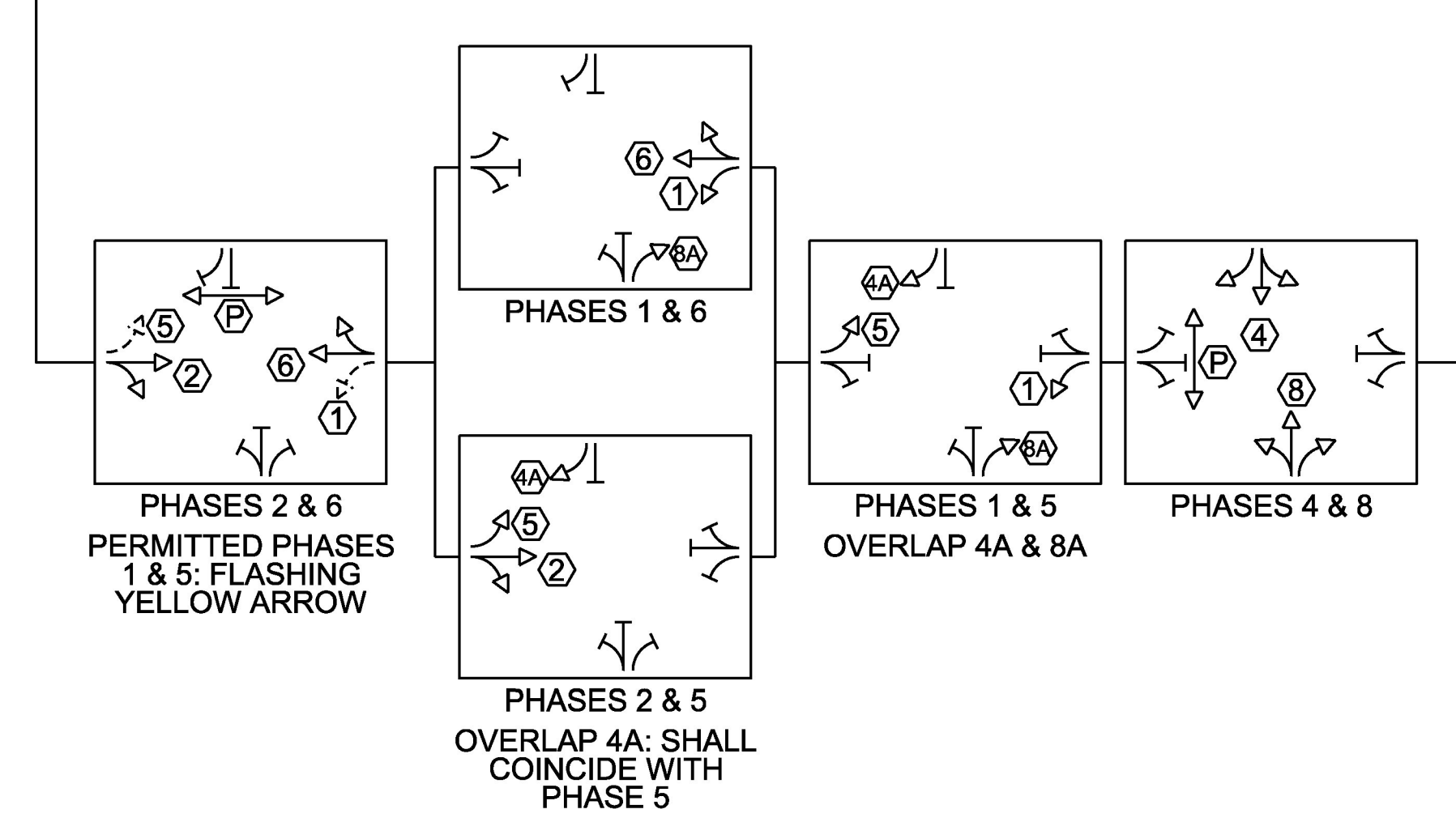
CONSTRUCT PEDESTRIAN PEDESTAL POLE
 STA. 87+96.30, LT (PP-10)
 STA. 88+10.08, RT (PP-11)
 STA. 88+32.47, LT (PP-12)
 STA. 88+77.63, LT (PP-13)

CONSTRUCT LED BLANK OUT SIGN
 STA. 88+32.47, LT (PP-12)
 STA. 88+36.06, RT (EXISTING MA-1B)

REMOVAL OF TRAFFIC CONTROL SIGNAL SYSTEM (US ROUTE 2 & ZEPHYR ROAD)
 SEE NOTE 2, THIS SHEET

SPECIAL PROVISION (LUMINAIRE, LED RETROFIT)
 STA. 88+36.06, RT

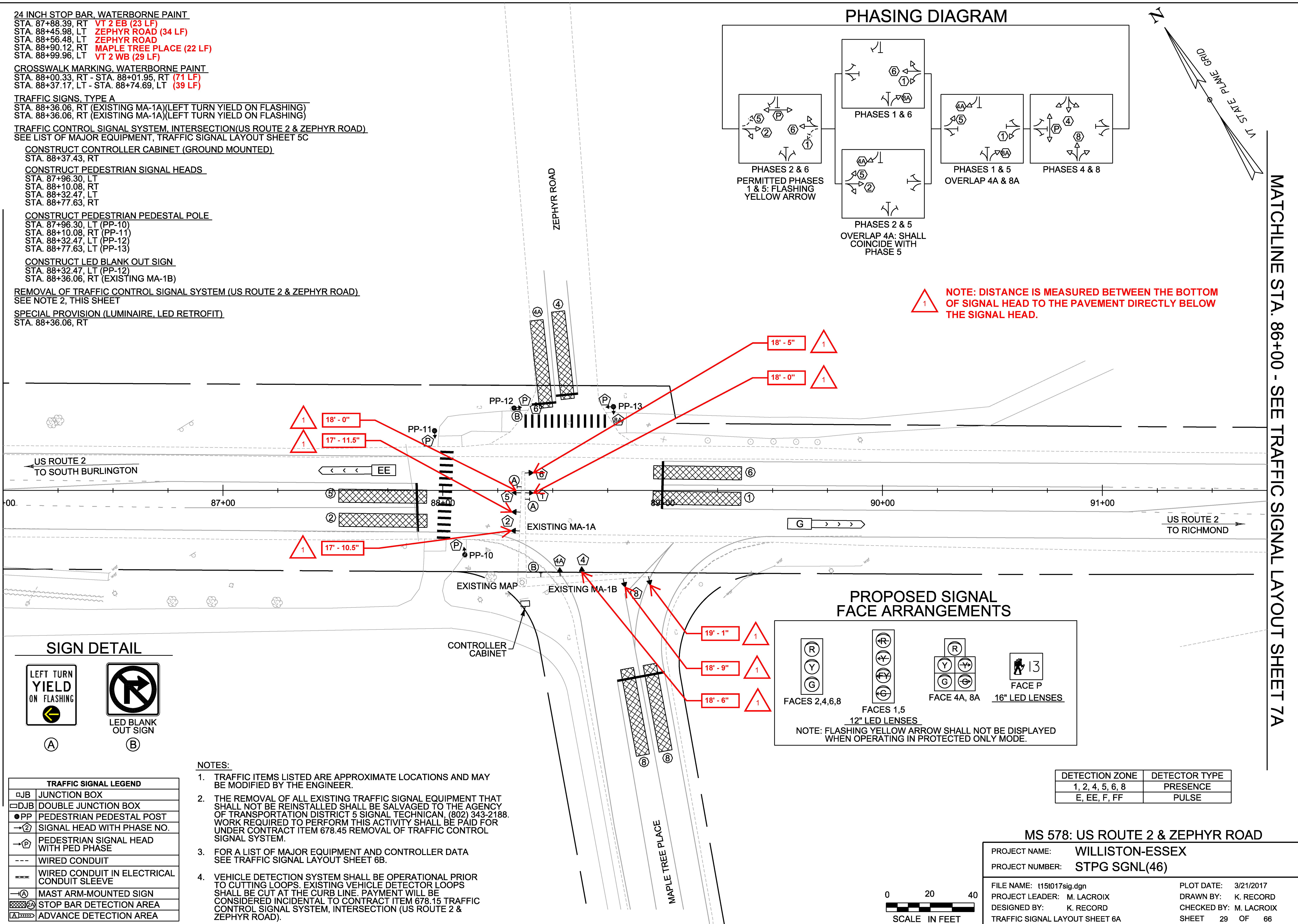
PHASING DIAGRAM



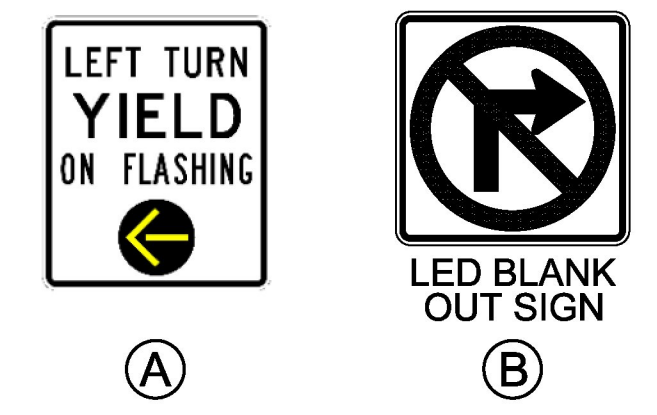
NOTE: DISTANCE IS MEASURED BETWEEN THE BOTTOM OF SIGNAL HEAD TO THE PAVEMENT DIRECTLY BELOW THE SIGNAL HEAD.

MATCHLINE STA. 86+00 - SEE TRAFFIC SIGNAL LAYOUT SHEET 5A

MATCHLINE STA. 86+00 - SEE TRAFFIC SIGNAL LAYOUT SHEET 7A



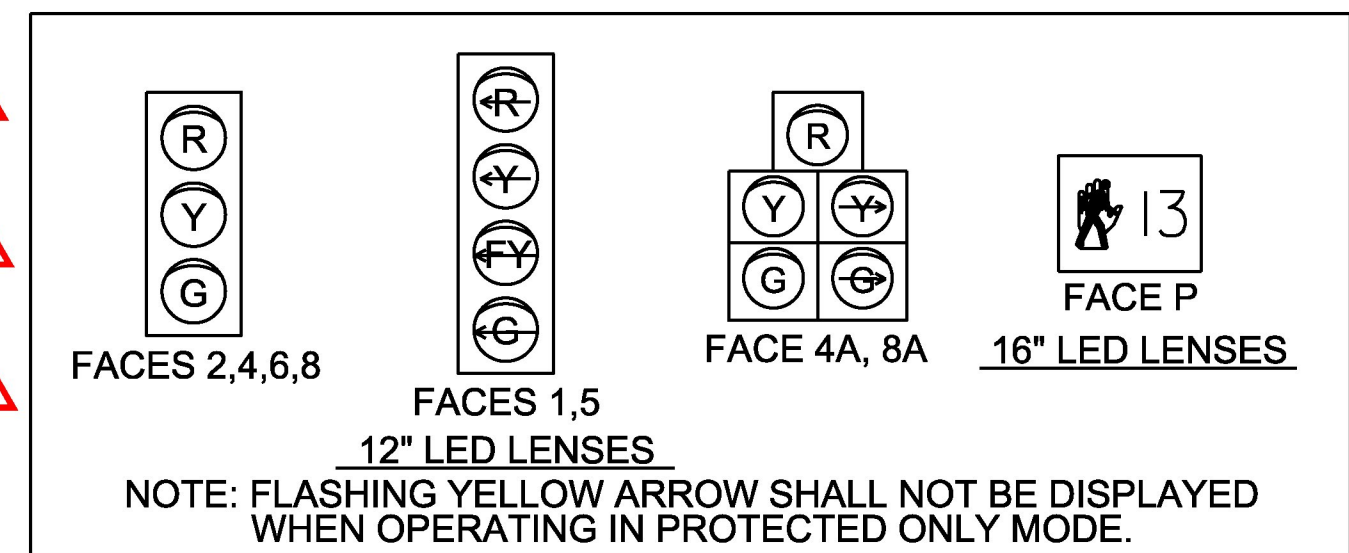
SIGN DETAIL



TRAFFIC SIGNAL LEGEND	
□JB	JUNCTION BOX
□DJB	DOUBLE JUNCTION BOX
●PP	PEDESTRIAN PEDESTAL POST
→②	SIGNAL HEAD WITH PHASE NO.
→Ⓟ	PEDESTRIAN SIGNAL HEAD WITH PED PHASE
---	WIRED CONDUIT
---	WIRED CONDUIT IN ELECTRICAL CONDUIT SLEEVE
→A	MAST ARM-MOUNTED SIGN
▨	STOP BAR DETECTION AREA
▨	ADVANCE DETECTION AREA

- NOTES:**
- TRAFFIC ITEMS LISTED ARE APPROXIMATE LOCATIONS AND MAY BE MODIFIED BY THE ENGINEER.
 - THE REMOVAL OF ALL EXISTING TRAFFIC SIGNAL EQUIPMENT THAT SHALL NOT BE REINSTALLED SHALL BE SALVAGED TO THE AGENCY OF TRANSPORTATION DISTRICT 5 SIGNAL TECHNICIAN, (802) 343-2188. WORK REQUIRED TO PERFORM THIS ACTIVITY SHALL BE PAID FOR UNDER CONTRACT ITEM 678.45 REMOVAL OF TRAFFIC CONTROL SIGNAL SYSTEM.
 - FOR A LIST OF MAJOR EQUIPMENT AND CONTROLLER DATA SEE TRAFFIC SIGNAL LAYOUT SHEET 6B.
 - VEHICLE DETECTION SYSTEM SHALL BE OPERATIONAL PRIOR TO CUTTING LOOPS. EXISTING VEHICLE DETECTOR LOOPS SHALL BE CUT AT THE CURB LINE. PAYMENT WILL BE CONSIDERED INCIDENTAL TO CONTRACT ITEM 678.15 TRAFFIC CONTROL SIGNAL SYSTEM, INTERSECTION (US ROUTE 2 & ZEPHYR ROAD).

PROPOSED SIGNAL FACE ARRANGEMENTS



DETECTION ZONE	DETECTOR TYPE
1, 2, 4, 5, 6, 8	PRESENCE
E, EE, F, FF	PULSE

MS 578: US ROUTE 2 & ZEPHYR ROAD

PROJECT NAME:	WILLISTON-ESSEX	FILE NAME:	t15i017sig.dgn	PLOT DATE:	3/21/2017
PROJECT NUMBER:	STPG SGNL(46)	PROJECT LEADER:	M. LACROIX	DRAWN BY:	K. RECORD
		DESIGNED BY:	K. RECORD	CHECKED BY:	M. LACROIX
		TRAFFIC SIGNAL LAYOUT SHEET 6A		SHEET	29 OF 66

