

SEED
AS NEEDED

FERTILIZER
AS NEEDED

AGRICULTURAL LIMESTONE
AS NEEDED

TOPSOIL
AS NEEDED

TEMPORARY EROSION MATTING
AS NEEDED

24 INCH STOP BAR, WATERBORNE PAINT
STA. 82+36.58, RT
STA. 83+36.22, RT BOXWOOD ST (11 LF)
STA. 83+61.04, LT VT 2A WB (23 LF)

NOTE: STOP BARS THAT WERE NOT PAINTED WERE COMPLETED UNDER: SOUTH BURLINGTON - WILLISTON NH2944(1) PROJECT

CROSSWALK MARKING, WATERBORNE PAINT
STA. 83+14.81, RT - STA. 83+39.22, RT (24 LF)

TRAFFIC SIGNS, TYPE A
STA. 82+80.17, RT (EXISTING MA-1A)(LEFT TURN YIELD ON FLASHING)

TRAFFIC CONTROL SIGNAL SYSTEM, INTERSECTION(US ROUTE 2 & BOXWOOD STREET)
SEE LIST OF MAJOR EQUIPMENT, TRAFFIC SIGNAL LAYOUT SHEET 5B

CONSTRUCT CONTROLLER CABINET (GROUND MOUNTED)
STA. 82+81.26, RT

CONSTRUCT SIGNAL PEDESTAL POST
STA. 83+62.28, LT (SP-1)

CONSTRUCT PEDESTRIAN SIGNAL HEADS
STA. 83+05.27, RT
STA. 83+48.63, RT

CONSTRUCT PEDESTRIAN PEDESTAL POLE
STA. 83+05.27, RT (PP-8)
STA. 83+48.63, RT (PP-9)

INSTALL NEW LED BLANK OUT SIGN
STA. 82+80.17, RT (EXISTING MA-1B)

REMOVAL OF TRAFFIC CONTROL SIGNAL SYSTEM (US ROUTE 2 & BOXWOOD STREET)
SEE NOTE 2, THIS SHEET

WIRED CONDUIT
SEE CONDUIT SCHEDULE, TRAFFIC SIGNAL LAYOUT SHEET 5B

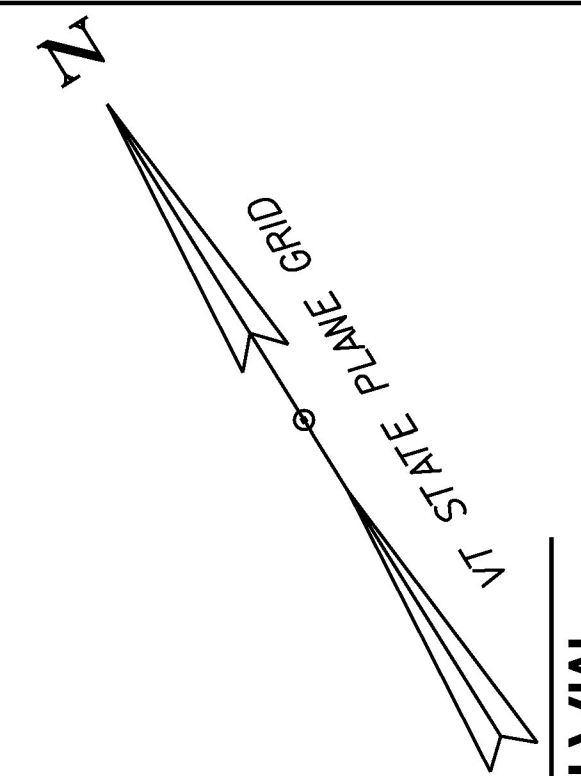
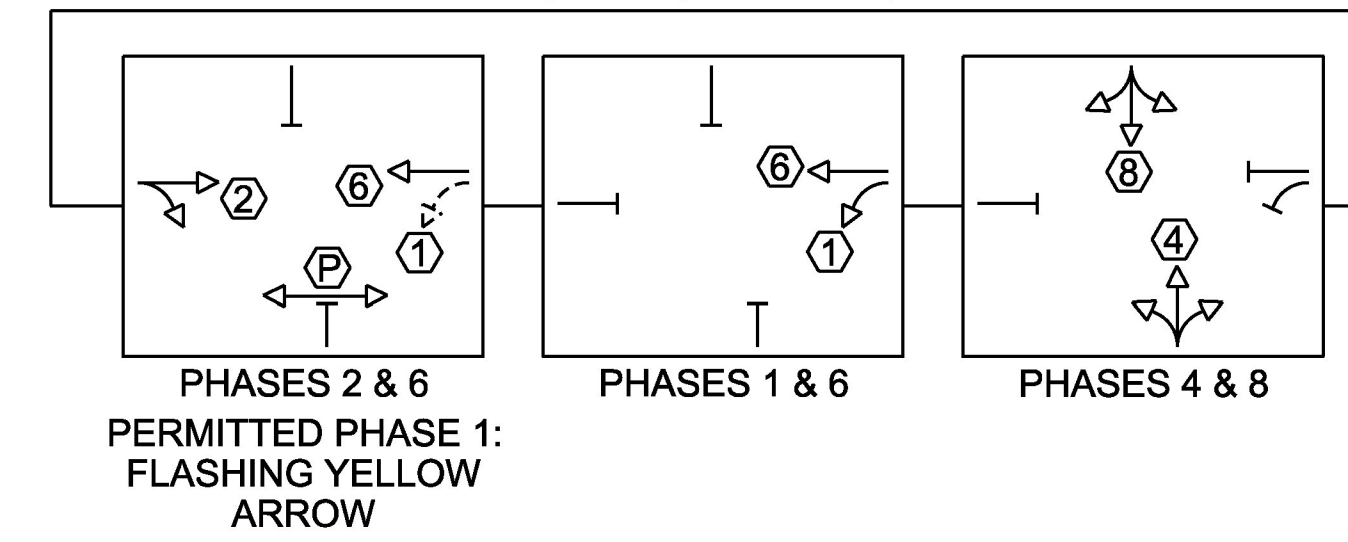
ELECTRICAL CONDUIT
SEE CONDUIT SCHEDULE, TRAFFIC SIGNAL LAYOUT SHEET 5B

SPECIAL PROVISION (HORIZONTAL DIRECTIONAL DRILLING)(12" CASING PIPE)
STA. 83+53.92, RT - STA. 83+55.77, LT (68') (78 LF)

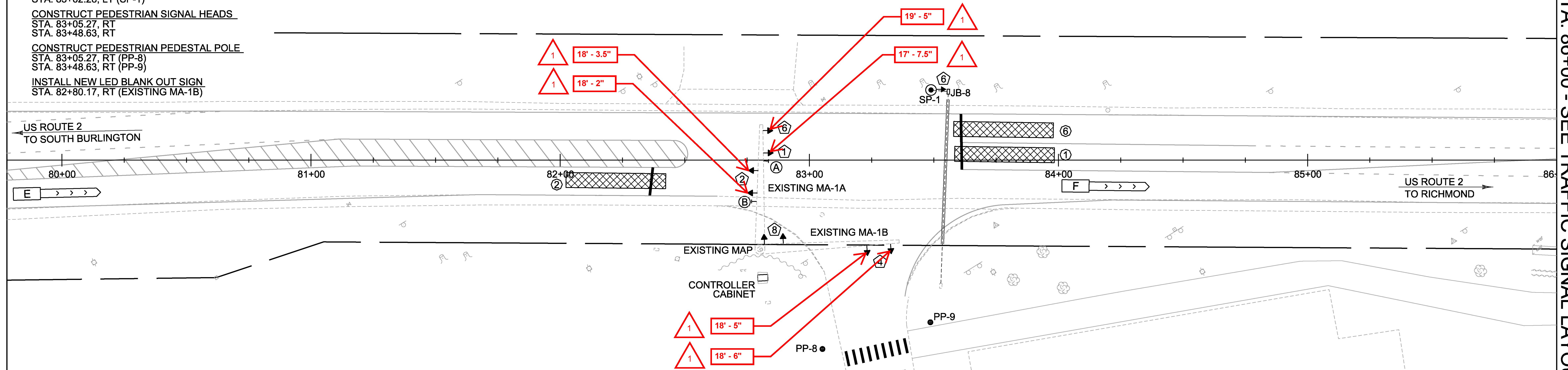
SPECIAL PROVISION (JUNCTION BOX, HEAVY DUTY)
STA. 83+55.77, LT (JB-8)

SPECIAL PROVISION (LUMINAIRE, LED RETROFIT)
STA. 82+80.17, RT

PHASING DIAGRAM

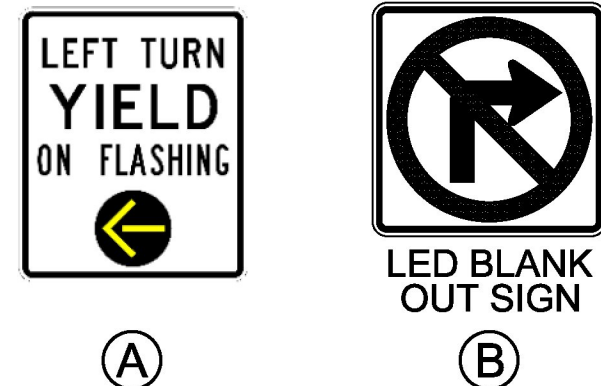


MATCHLINE STA. 86+00 - SEE TRAFFIC SIGNAL LAYOUT SHEET 6A



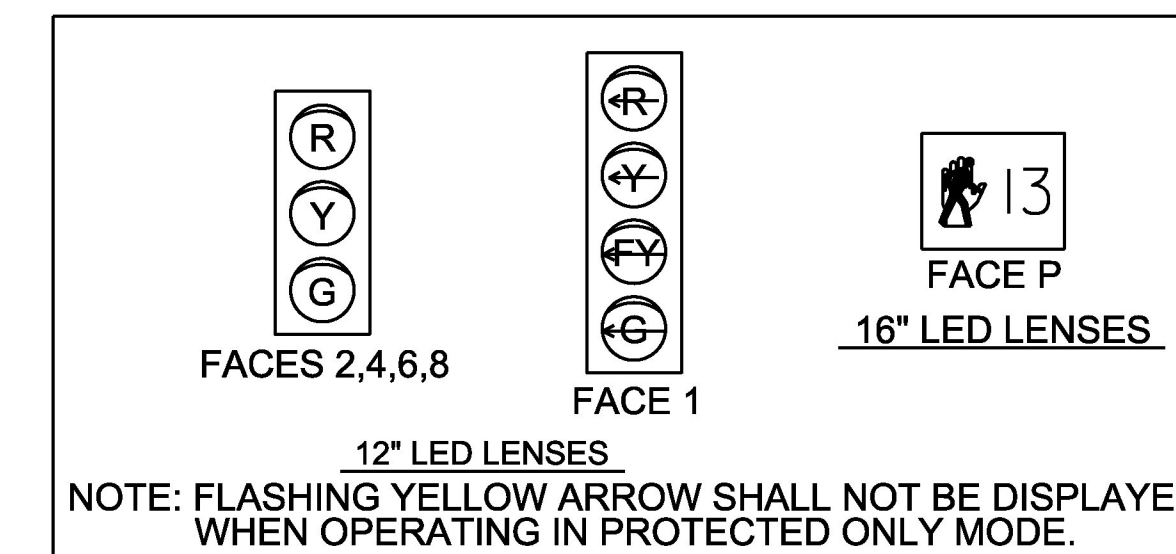
DETECTION ZONE	DETECTOR TYPE
1, 2, 4, 5, 6, 8	PRESENCE
E, EE, F, FF	PULSE

SIGN DETAIL



NOTE: DISTANCE IS MEASURED BETWEEN THE BOTTOM OF SIGNAL HEAD TO THE PAVEMENT DIRECTLY BELOW THE SIGNAL HEAD.

PROPOSED SIGNAL FACE ARRANGEMENTS



NOTES:

- TRAFFIC ITEMS LISTED ARE APPROXIMATE LOCATIONS AND MAY BE MODIFIED BY THE ENGINEER IN THE FIELD.
- THE REMOVAL OF ALL EXISTING TRAFFIC SIGNAL EQUIPMENT THAT SHALL NOT BE REINSTALLED SHALL BE SALVAGED TO THE AGENCY OF TRANSPORTATION DISTRICT 5 SIGNAL TECHNICIAN, (802) 343-2188. WORK REQUIRED TO PERFORM THIS ACTIVITY SHALL BE PAID FOR UNDER CONTRACT ITEM 678.45 REMOVAL OF TRAFFIC CONTROL SIGNAL SYSTEM.
- FOR A LIST OF MAJOR EQUIPMENT AND CONTROLLER DATA SEE TRAFFIC SIGNAL LAYOUT SHEET 5B.
- VEHICLE DETECTION SYSTEM SHALL BE OPERATIONAL PRIOR TO CUTTING LOOPS. EXISTING VEHICLE DETECTOR LOOPS SHALL BE CUT AT THE CURB LINE. PAYMENT WILL BE CONSIDERED INCIDENTAL TO CONTRACT ITEM 678.15 TRAFFIC CONTROL SIGNAL SYSTEM, INTERSECTION (US ROUTE 2 & BOXWOOD STREET).
- ANY WORK AT THE INTERSECTION OF BOXWOOD STREET AND US ROUTE 2 CANNOT BEGIN UNTIL AFTER JULY 24, 2017.

TRAFFIC SIGNAL LEGEND	
□ JB	JUNCTION BOX
□ DJB	DOUBLE JUNCTION BOX
● PP	PEDESTRIAN PEDESTAL POST
→ ②	SIGNAL HEAD WITH PHASE NO.
→ ②	PEDESTRIAN SIGNAL HEAD WITH PED PHASE
---	WIRED CONDUIT
---	WIRED CONDUIT IN ELECTRICAL CONDUIT SLEEVE
→ ①	MAST ARM-MOUNTED SIGN
⊠	STOP BAR DETECTION AREA
⊠	ADVANCE DETECTION AREA



MS 577: US ROUTE 2 & BOXWOOD ST

PROJECT NAME:	WILLISTON-ESSEX	FILE NAME:	t15i017sig.dgn	PLOT DATE:	3/21/2017
PROJECT NUMBER:	STPG SGNL(46)	PROJECT LEADER:	M. LACROIX	DRAWN BY:	K. RECORD
		DESIGNED BY:	K. RECORD	CHECKED BY:	M. LACROIX
		TRAFFIC SIGNAL LAYOUT SHEET 5A		SHEET	27 OF 66