

CONTROL POINTS

HVCTRL #1

EVANS
 NORTH = 733124.9200
 EAST = 1486286.3600
 ELEV. = 482.310

GENERAL LOCATION, ESSEX, VT.
 TO REACH FROM THE VT ROUTE 15 BRIDGE OVER VT ROUTE 289, GO NORTHWEST ALONG VT ROUTE 289 FOR 0.2 MI (0.3 KM) TO THE INTERSECTION OF VT ROUTE 289 AND THE NORTHWEST END OF THE NORTHBOUND ON-RAMP AND PARK VEHICLE. WALK NORTHEAST UP THE EMBANKMENT TO THE SITE OF THE MARK JUST BEYOND THE RIGHT-OF-WAY FENCE.

THE MARK IS SET ON THE EDGE OF A FIELD 10 CM (4 INCHES) BELOW GROUND SURFACE IN THE TOP OF A ROCK OUTCROP.

IT IS 56.0 M (183.7 FT) NORTHEAST OF AND ABOUT 7 M (23.0 FT) HIGHER THAN THE CENTERLINE OF VT ROUTE 289, 8.4 M (27.6 FT) WEST OF A 25 CM (10 INCH) CHERRY AT THE CORNER OF A BRUSH LINE, 18.7 M (61.4 FT) NORTHWEST OF A 4 CM (2 INCH) SPRUCE AND 1.2 M (3.9 FT) NORTHEAST OF A FIBERGLASS WITNESS POST AND THE RIGHT-OF-WAY FENCE.

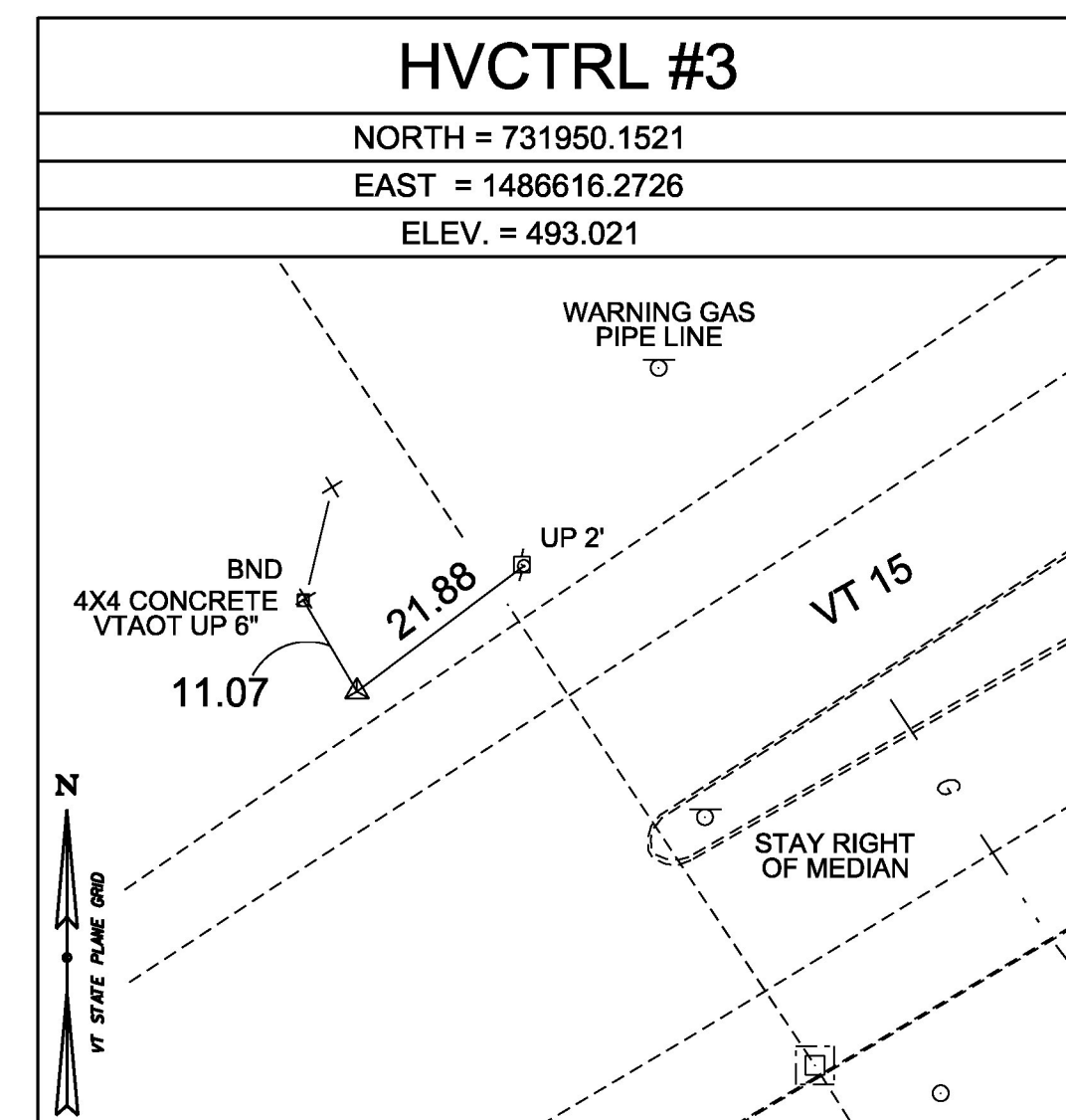
HVCTRL #2

LANG
 NORTH = 731743.2100
 EAST = 1486466.6000
 ELEV. = 492.630

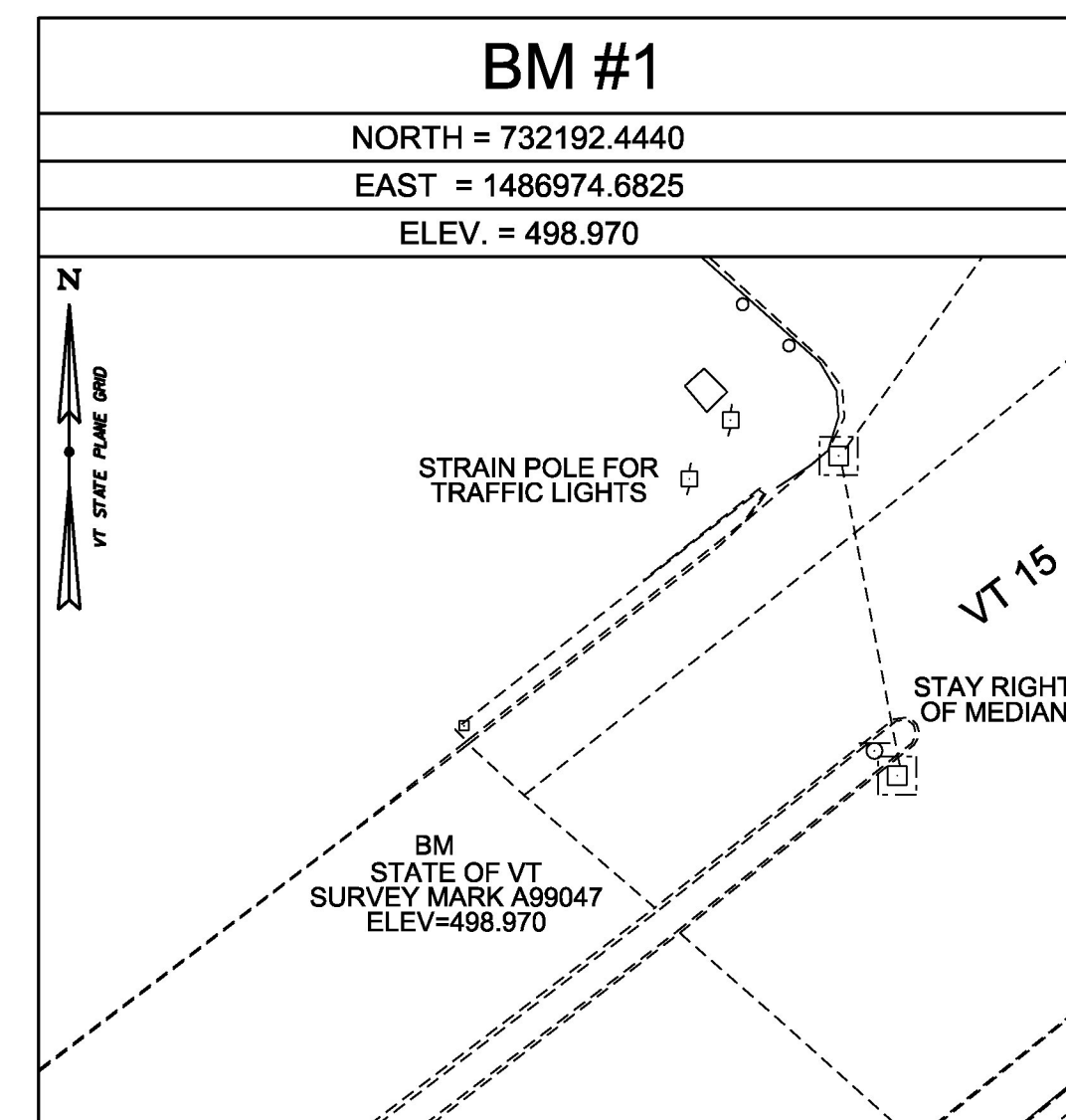
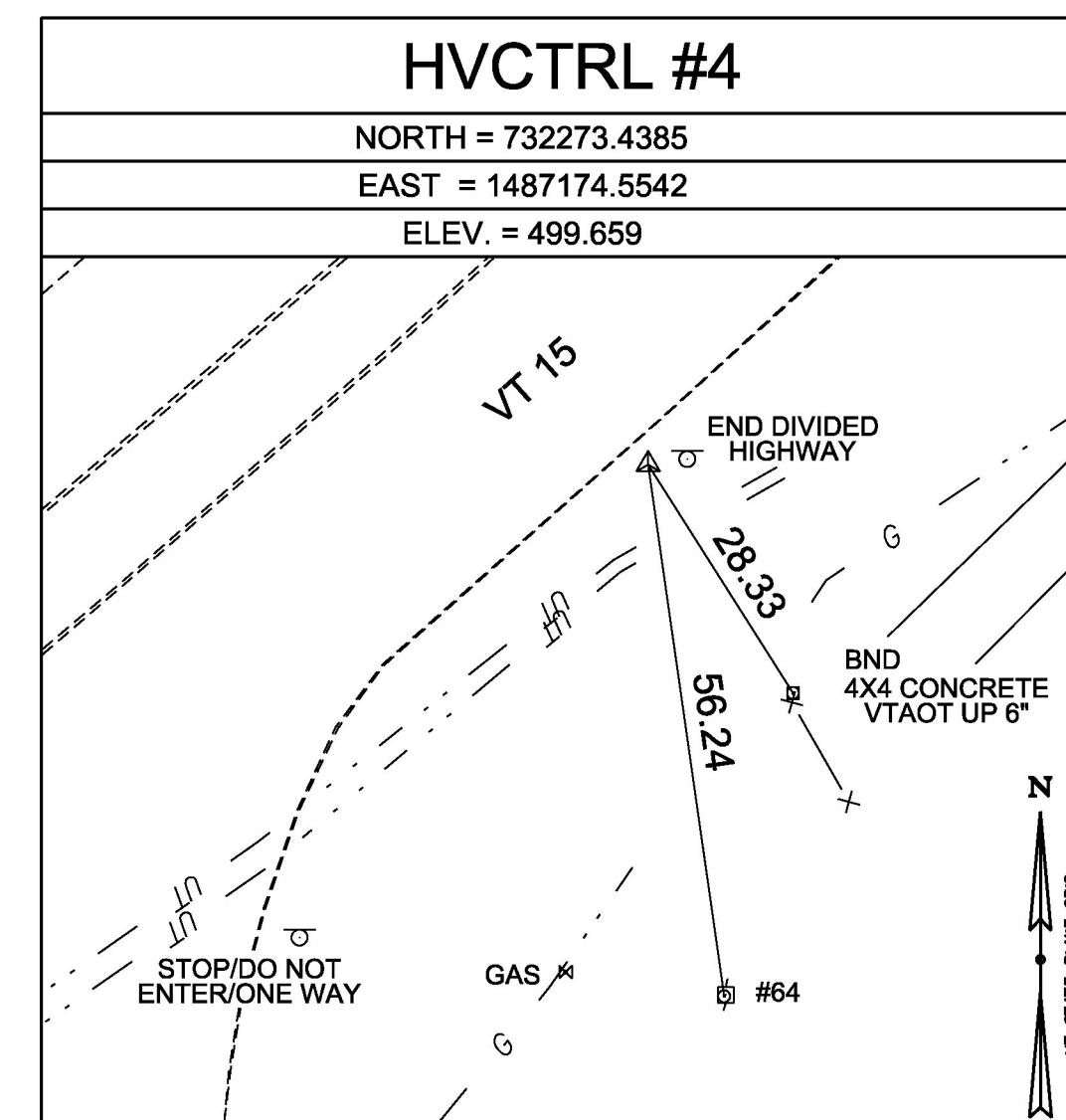
GENERAL LOCATION, ESSEX, VT.
 1.5 MI (2.4 KM) NORTHEAST OF ESSEX JUNCTION. TO REACH FROM THE 5-CORNERS INTERSECTION OF VT ROUTES 15, 117, AND 2A IN ESSEX JUNCTION GO NORTHEAST ALONG VT ROUTE 15 FOR 1.5 MI (2.4 KM) TO THE MARK ON THE RIGHT, SET IN THE TOP OF THE EAST END OF A LEDGE CUT. IT IS 0.1 MI (0.2 KM) WEST OF THE VT ROUTE 15 BRIDGE OVER ROUTE 289.

THE MARK IS 18.6 M (61.0 FT) SOUTH OF AND ABOUT 5 M (16.4 FT) HIGHER THAN THE CENTERLINE OF VT ROUTE 15, 17.8 M (58.4 FT) WEST-NORTHWEST OF THE NORTHWEST CORNER OF A ONE STORY HOUSE, 5.1 M (16.7 FT) SOUTH OF THE NORTH EDGE OF THE LEDGE CUT, 8.3 M (27.2 FT) SOUTH-SOUTHEAST OF POLE NO. 57/54, AND 8.3 M (27.2 FT) WEST OF A FIBERGLASS WITNESS POST AND POLE NO. 57-01/53A.

TRAVERSE TIES



TRAVERSE COMPLETED BY R. GILMAN P.C. & C. CYR ON 12/07/15



| |
|---------------|
| |
| NORTH = _____ |
| EAST = _____ |
| ELEV. = _____ |
| |

| |
|---------------|
| |
| NORTH = _____ |
| EAST = _____ |
| ELEV. = _____ |
| |

ALIGNMENT TIES

| |
|---------------|
| |
| NORTH = _____ |
| EAST = _____ |
| ELEV. = _____ |
| |

| |
|---------------|
| |
| NORTH = _____ |
| EAST = _____ |
| ELEV. = _____ |
| |

| |
|---------------|
| |
| NORTH = _____ |
| EAST = _____ |
| ELEV. = _____ |
| |

| |
|---------------|
| |
| NORTH = _____ |
| EAST = _____ |
| ELEV. = _____ |
| |

| |
|---------------|
| |
| NORTH = _____ |
| EAST = _____ |
| ELEV. = _____ |
| |

| | |
|------------|---------------|
| DATUM | |
| VERTICAL | NAVD 88 |
| HORIZONTAL | NAD 83 (2011) |
| ADJUSTMENT | COMPASS |

| | | | |
|-----------------|-----------------|-------------|--------------|
| PROJECT NAME: | WILLISTON-ESSEX | | |
| PROJECT NUMBER: | STPG SGNL(46) | | |
| FILE NAME: | X15T017TI.DGN | PLOT DATE: | 3/21/2017 |
| PROJECT LEADER: | M. LACROIX | DRAWN BY: | C. CYR |
| DESIGNED BY: | VTRANS | CHECKED BY: | G. HITCHCOCK |
| TIE SHEET 1 | | SHEET 5 | OF 66 |