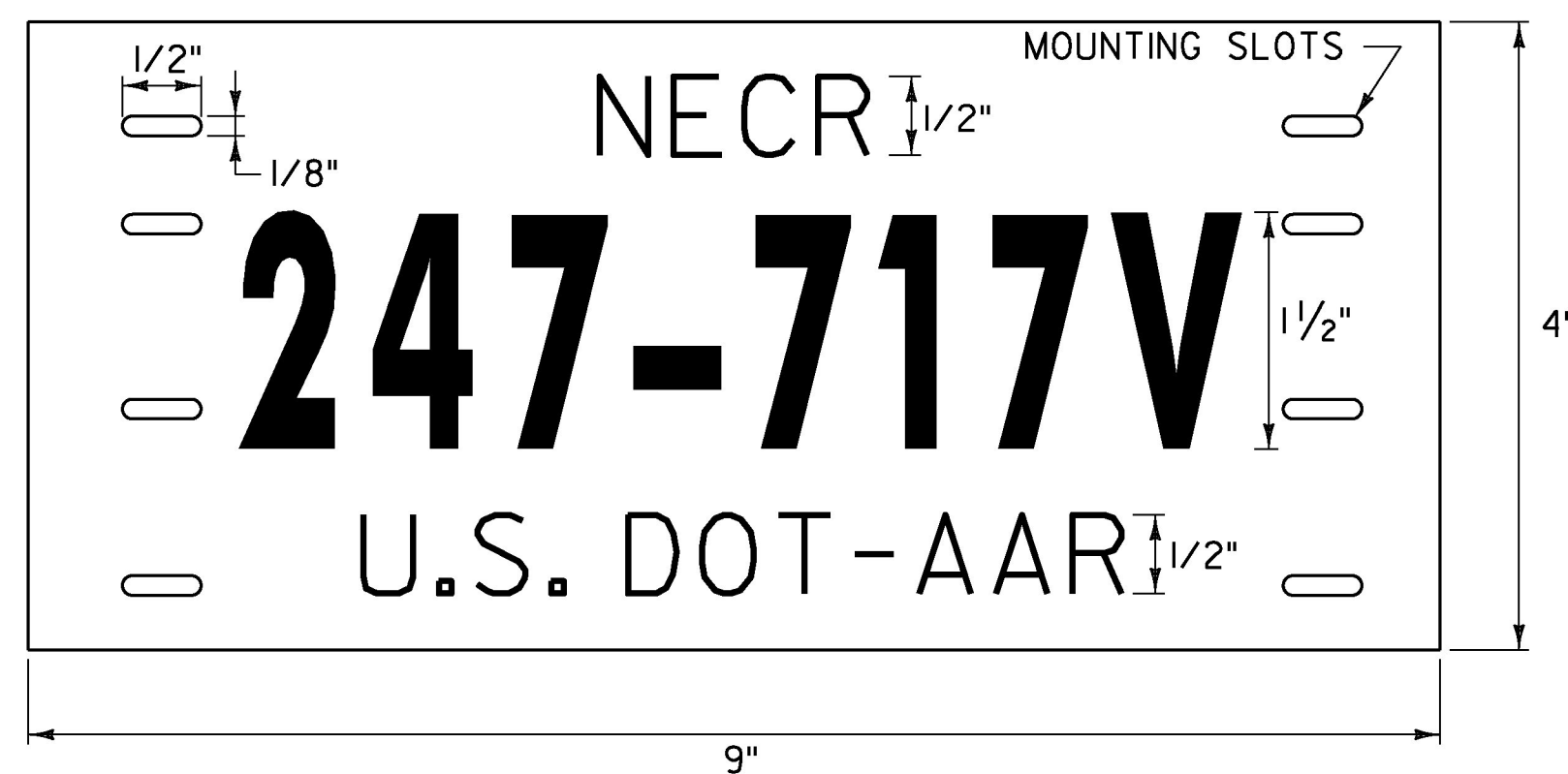


BORDER
R=17/8"
TH=03/4"
I-13a

LOCATION: WINOOSKI: EASTBOUND
MM 0.360
WINOOSKI: WESTBOUND
MM 0.365

COLOR: WHITE BORDER AND TEXT (RETROREFLECTIVE)
BLUE BACKGROUND (RETROREFLECTIVE)

MATERIAL: PER CHART ON VAOT STANDARD T-2

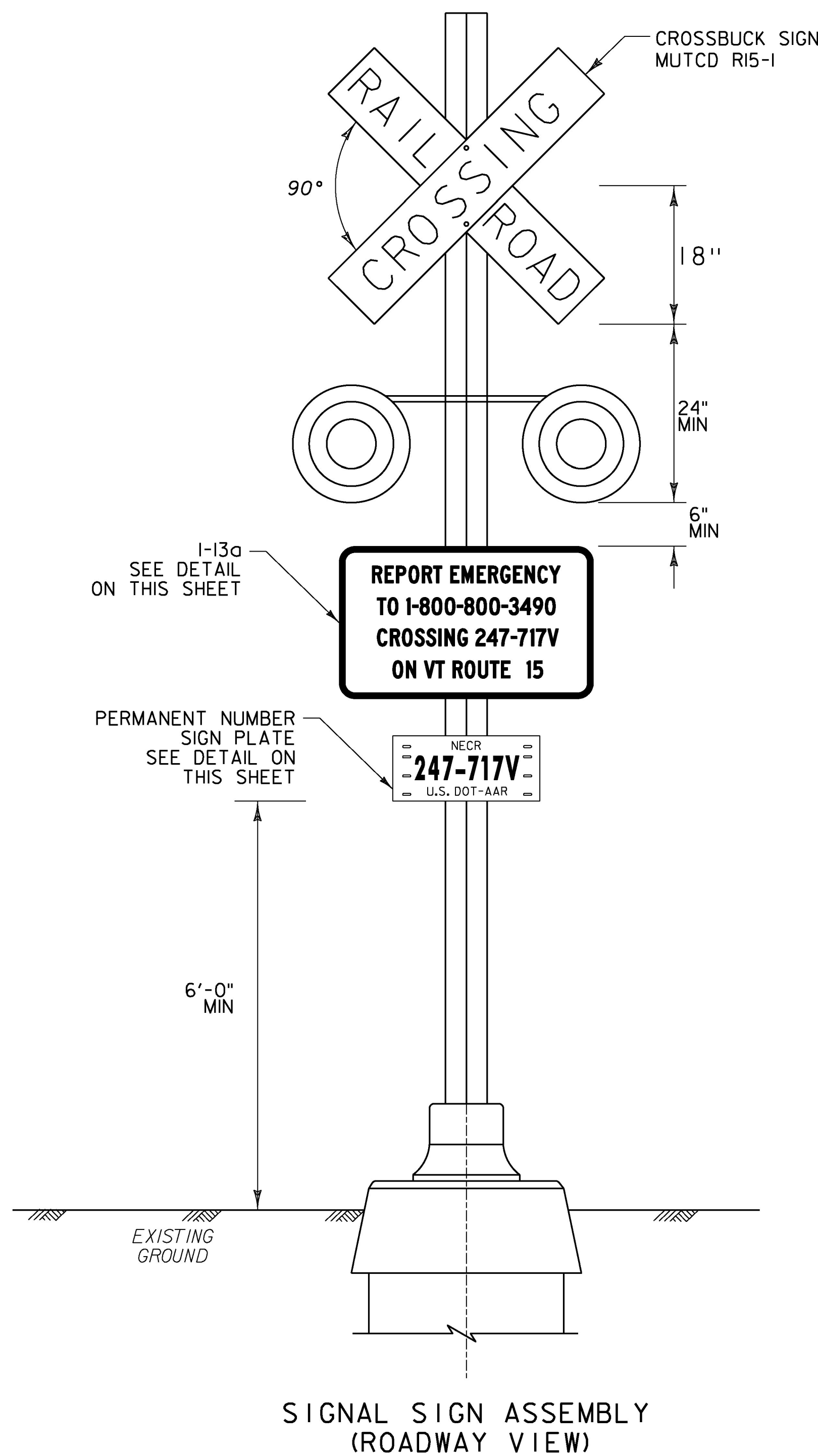


PERMANENT NUMBER SIGN PLATE

LOCATION: WINOOSKI: EASTBOUND
MM 0.360
WINOOSKI: WESTBOUND
MM 0.365

COLOR: BLACK TEXT (NO BORDER)
WHITE BACKGROUND (RETROREFLECTIVE)

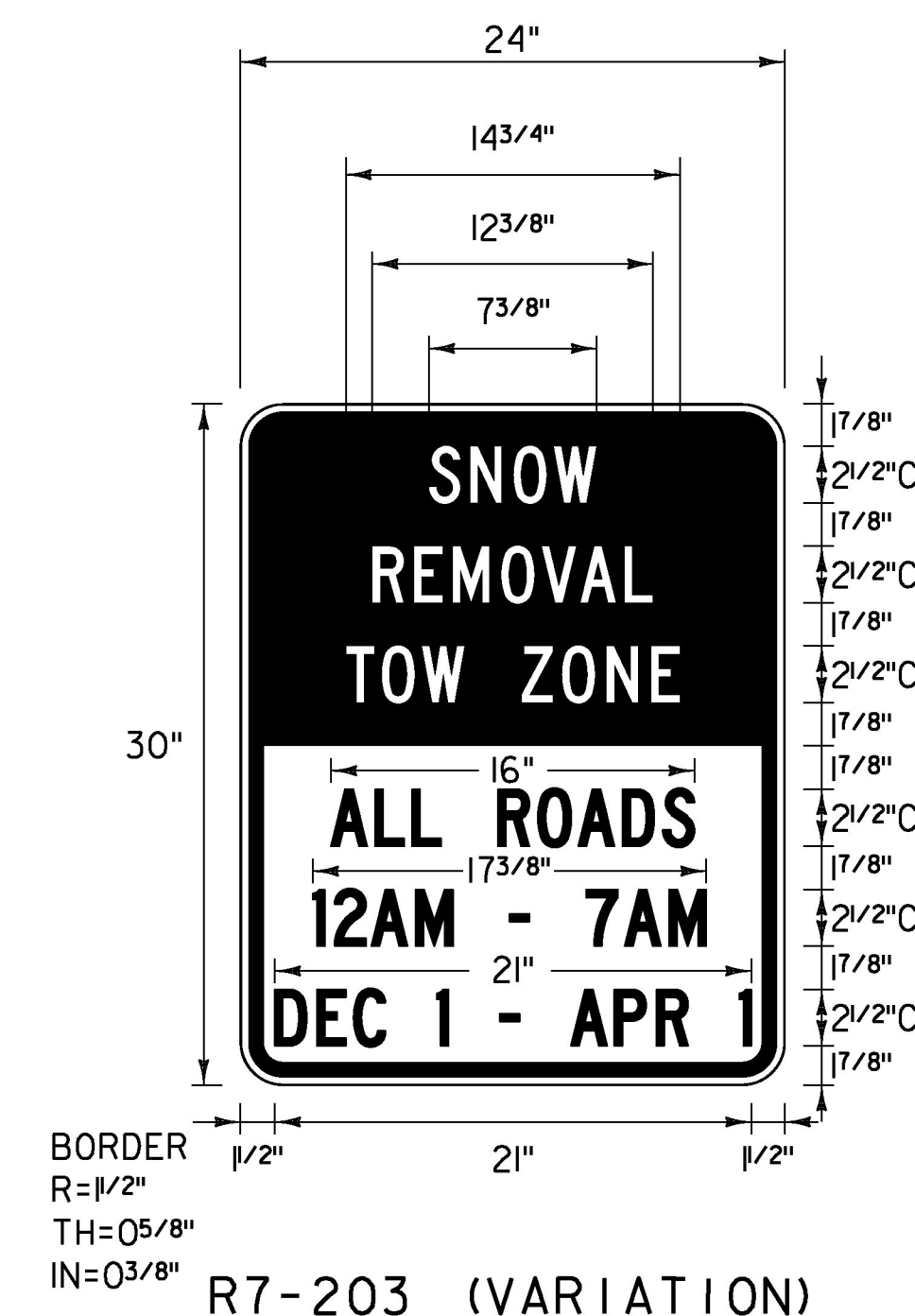
MATERIAL: PER RAILROAD CROSSING SIGN NOTE 5
ON THIS SHEET



SIGNAL SIGN ASSEMBLY
(ROADWAY VIEW)

RAILROAD CROSSING SIGN NOTES:

1. THE COLORS, LETTERING, DESIGN, AND SPECIFICATION SHALL CONFORM TO THE CURRENT EDITION OF THE MUTCD.
2. THE EMERGENCY CONTACT TELEPHONE NUMBER IS 1-800-800-3490.
3. THE I-13a SIGNS SHALL BE PLACED ON THE EXISTING SIGNAL POLES AS SHOWN IN THE DETAIL ON THIS SHEET.
4. THE CROSSING NUMBER IS SHOWN ABOVE IN DETAIL. THESE SIGNS ARE PAID AS ITEM 675.20 TRAFFIC SIGNS, TYPE A.
5. PERMANENT NUMBER SIGN PLATES SHALL BE MADE UP OF 0.032 GAGE ALUMINUM WITH RAISED NUMBERS AND LETTERS.
6. THE PERMANENT NUMBER SIGNS SHALL BE PLACED ONE ON EACH EXISTING SIGNAL POLE JUST BELOW THE I-13a SIGN AS SHOWN IN THE DETAIL ON THIS SHEET.



R7-203 (VARIATION)

LOCATION: ESSEX: EASTBOUND
MM 0.019

COLOR: TOP PLATE; WHITE TEXT, RED BACKGROUND (RETROREFLECTIVE)
BOTTOM PLATE; RED TEXT, WHITE BACKGROUND (RETROREFLECTIVE)

MATERIAL: PER CHART ON VAOT STANDARD T-2



R8-1 (VARIATION)

LOCATION: COLCHESTER: WESTBOUND
MM 1.343

COLOR: RED BORDER AND TEXT (RETROREFLECTIVE)
WHITE BACKGROUND (RETROREFLECTIVE)

MATERIAL: PER CHART ON VAOT STANDARD T-2

NOT TO SCALE

PROJECT NAME: WINOOSKI-CAMBRIDGE
PROJECT NUMBER: STPG SIGN(55)

FILE NAME: z15+006+yp.dgn PLOT DATE: 6/14/2016
PROJECT LEADER: M. FOISY DRAWN BY: D. DRAPER
DESIGNED BY: G. BARRETT CHECKED BY: M. FOISY
TRAFFIC SIGN DETAILS SHEET 13 SHEET 16 OF 192

