
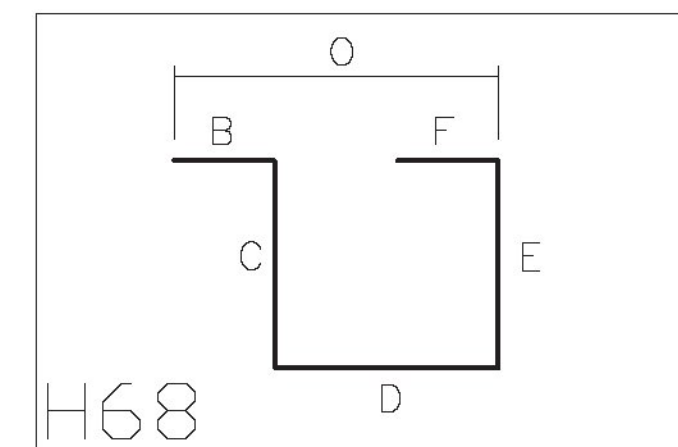
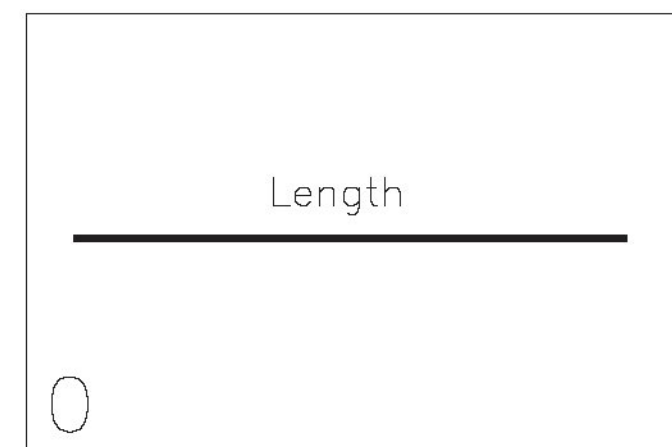


Release Number: \_\_\_\_\_ BAR LIST 

Bar Mark	Qty	Size	Total Length	Type	'A'	'B'	'C'	'D'	'E'	'F'	'G'	'H'	'J'	'K'	'O'	'R'
5BE01	42	#5	27'-0"			27'-0"										
5BE02	113	#5	6'-6"			6'-6"										
5BE03	220	#5	7'-0" <del>7'-6"</del>	H68		1'-0"	2'-1"	1'-5"	2'-6"	0'-0" <del>3'-0"</del>					2'-5"	
5BE04	42	#5	30'-6"			30'-6"										
7BE01	221	#7	6'-6"			6'-6"										

■ .1 TEST BAR ADDED



**SHOP DRAWING REVIEW**

REVIEWED AS REQUIRED BY THE CONSTRUCTION CONTRACT DOCUMENTS AND APPROVED, BUT ONLY FOR CONFORMANCE TO THE DESIGN CONCEPT OF THE WORK, AND SUBJECT TO FURTHER LIMITATIONS AND REQUIREMENTS CONTAINED IN THE CONSTRUCTION CONTRACT DOCUMENTS.

REJECTED     REVISE AND RESUBMIT     APPROVED AS NOTED

CORRECTIONS OR COMMENTS MADE ON THE SHOP DRAWINGS DURING THIS REVIEW DID NOT RELIEVE CONTRACTOR FROM COMPLIANCE WITH REQUIREMENTS OF THE DRAWINGS AND SPECIFICATIONS. THIS CHECK IS ONLY FOR REVIEW OF GENERAL CONFORMANCE WITH THE DESIGN CONCEPT OF THE PROJECT AND GENERAL COMPLIANCE WITH THE INFORMATION GIVEN IN THE CONTRACT DOCUMENTS. THE CONTRACTOR IS RESPONSIBLE FOR CONFIRMING AND CORRELATING ALL QUANTITIES AND DIMENSIONS; SELECTING FABRICATION PROCESSES AND TECHNIQUES OF CONSTRUCTION; COORDINATING THEIR WORK WITH THAT OF ALL OTHER TRADES; AND PERFORMING THEIR WORK IN A SAFE AND SATISFACTORY MANNER.

 CLD Consulting Engineers  
540 Commercial Street  
Manchester, NH 03101  
603-568-5523

Job Number: 150223  
Reviewed by: S.BEAUMONT  
Date: 04/05/2017

Vermont Agency of Transportation  
**RECEIVED**

CK'D BY CLD Consulting Engineers    OK'D BY CLD Consulting Engineers  
April 5, 2017

RESUBMIT No    Approved AsNoted  
BY Kristin Higgins    DATE 4/5/2017

**LEGEND:**

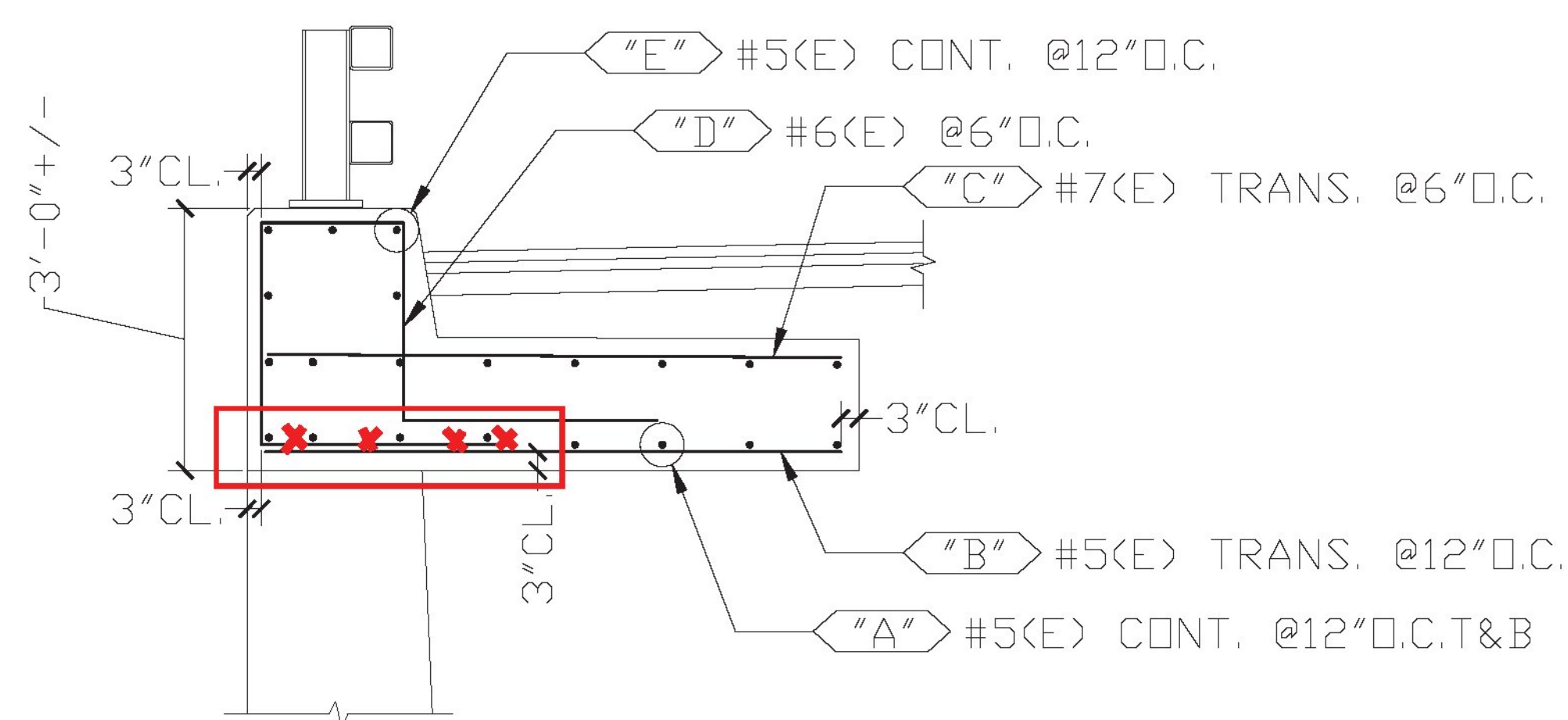
CONT.-CONTINUOUS	E.E.-EACH END
TRANS.-TRANSVERSE	E.F.-EACH FACE
DWLS.-DOWELS	N.F.-NEAR FACE
VERTS.-VERTICAL	F.F.-FAR FACE
HORIZ.-HORIZONTAL	E.W.-EACH WAY
T&B -TOP & BOTTOM	O.C.-ON CENTER
I.F.-INNER FACE	L.W.-LONG WAY
O.F.-OUTER FACE	S.W.-SHORT WAY

ELEVATIONS & DIMENSIONS SHOWN ON THIS DWG. ARE FOR REINF. DETAILING PURPOSES ONLY AND ARE NOT INTENDED FOR DIMENSIONAL CONSTRUCTION.

EPOXY REINF. BARS ASTM A615 GRADE 60, MARKED (E)



VERIFICATION OF UNCLEAR INFORMATION MAY BE REQUESTED ON THIS DRAWING. SHOULD VERIFICATION BE LEFT UN-ADDRESSED IT WILL REMAIN AS SHOWN AND ASSUME TO BE CORRECT.

WORK THIS DRAWING WITH DRAWINGS B1 & B2



SECTION A  
CONTRACT DWG. REF. A-A / 18 OF 27

**FOR APPROVAL**

6			
5			
4			
3	4/3/17		REVISED PER APPROVAL / FOR APPROVAL
2	3/20/17	-	NO CHANGES / FOR APPROVAL
1	2/13/17	-	FOR APPROVAL
	DATE	REV.#	SENT FOR
	 <b>DIMENSION</b> DIMENSION FABRICATORS INC.		
	2000 7TH STREET SCOTIA, N.Y. 12302 PH: (518) 374-1936 FAX (518) 374-4830 www.dimensionfabricators.com		
STRUCTURE	VTAOT ORWELL STP DECK (41) STATE ROUTE 73, BRIDGE #4		
LOCATION	TOWN OF ORWELL, COUNTY OF ADDISON		
ARCHITECT			
ENGINEER	CLD CONSULTING ENGINEERS		
CUSTOMER	COLD RIVER BRIDGES, LLC		
DRAWN BY	DATE	DFI #	
CMB	2/13/17	10116	
DRAWING COVERS		DRAWING #	
RAIL SUPPORT SLABS		B2	