

LEGEND:

CONT.-CONTINUOUS	E.E.-EACH END
TRANS.-TRANSVERSE	E.F.-EACH FACE
DWLS.-DOWELS	N.F.-NEAR FACE
VERTS.-VERTICAL	F.F.-FAR FACE
HORIZ.-HORIZONTAL	E.W.-EACH WAY
T&B -TOP & BOTTOM	O.C.-ON CENTER
I.F.-INNER FACE	L.W.-LONG WAY
O.F.-OUTER FACE	S.W.-SHORT WAY

ELEVATIONS & DIMENSIONS SHOWN ON THIS DWG. ARE FOR REINF. DETAILING PURPOSES ONLY AND ARE NOT INTENDED FOR DIMENSIONAL CONSTRUCTION.

EPOXY REINF. BARS ASTM A615 GRADE 60, MARKED (E)

VERIFICATION OF UNCLEAR INFORMATION MAY BE REQUESTED ON THIS DRAWING. SHOULD VERIFICATION BE LEFT UN-ADDRESSED IT WILL REMAIN AS SHOWN AND ASSUME TO BE CORRECT.

SHOP DRAWING REVIEW

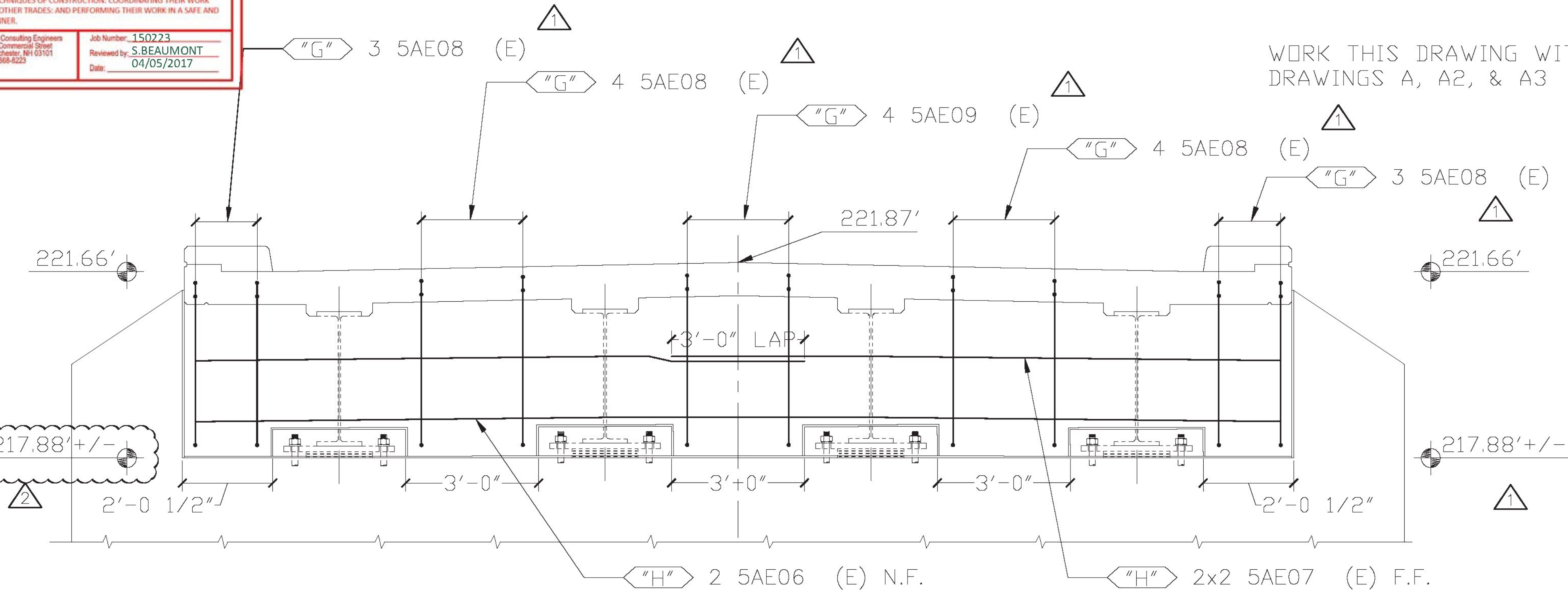
REVIEWED AS REQUIRED BY THE CONSTRUCTION CONTRACT DOCUMENTS AND APPROVED, BUT ONLY FOR CONFORMANCE TO THE DESIGN CONCEPT OF THE WORK, AND SUBJECT TO FURTHER LIMITATIONS AND REQUIREMENTS CONTAINED IN THE CONSTRUCTION CONTRACT DOCUMENTS.

REJECTED REVISE AND RESUBMIT APPROVED AS NOTED

CORRECTIONS OR COMMENTS MADE ON THE SHOP DRAWINGS DURING THIS REVIEW DID NOT RELIEVE CONTRACTOR FROM COMPLIANCE WITH REQUIREMENTS OF THE DRAWINGS AND SPECIFICATIONS. THIS CHECK IS ONLY FOR REVIEW OF GENERAL CONFORMANCE WITH THE DESIGN CONCEPT OF THE PROJECT AND GENERAL COMPLIANCE WITH THE INFORMATION GIVEN IN THE CONTRACT DOCUMENTS. THE CONTRACTOR IS RESPONSIBLE FOR: CONFIRMING AND CORRELATING ALL QUANTITIES AND DIMENSIONS; SELECTING FABRICATION PROCESSES AND TECHNIQUES OF CONSTRUCTION; COORDINATING THEIR WORK WITH THAT OF ALL OTHER TRADES; AND PERFORMING THEIR WORK IN A SAFE AND SATISFACTORY MANNER.

CLD Consulting Engineers
540 Commercial Street
Manchester, NH 03101
603-688-4223

Job Number: 150223
Reviewed by: S. BEAUMONT
Date: 04/05/2017



WORK THIS DRAWING WITH DRAWINGS A, A2, & A3

6			
5			
4			
3	4/3/17	2	REVISED PER APPROVAL / FOR APPROVAL
2	3/20/17	1	REVISED PER APPROVAL / FOR APPROVAL
1	2/13/17	-	FOR APPROVAL
DATE	REV.#	SENT FOR	

STRUCTURE	VTAOT ORWELL STP DECK (41) STATE ROUTE 73, BRIDGE #4		
	LOCATION	TOWN OF ORWELL, COUNTY OF ADDISON	
ARCHITECT			
ENGINEER	CLD CONSULTING ENGINEERS		
CUSTOMER	COLD RIVER BRIDGES, LLC		
DRAWN BY	DATE	DFI #	
CMB	2/11/17	10116	
DRAWING COVERS		DRAWING #	
DECK SLAB & CURTAIN WALL		A1	

Vermont Agency of Transportation
RECEIVED

CK'D BY CLD Consulting Engineers OK'D BY CLD Consulting Engineers

April 5, 2017

RESUBMIT No Approved AsNoted
BY Kristin Higgins DATE 4/5/2017

FOR APPROVAL