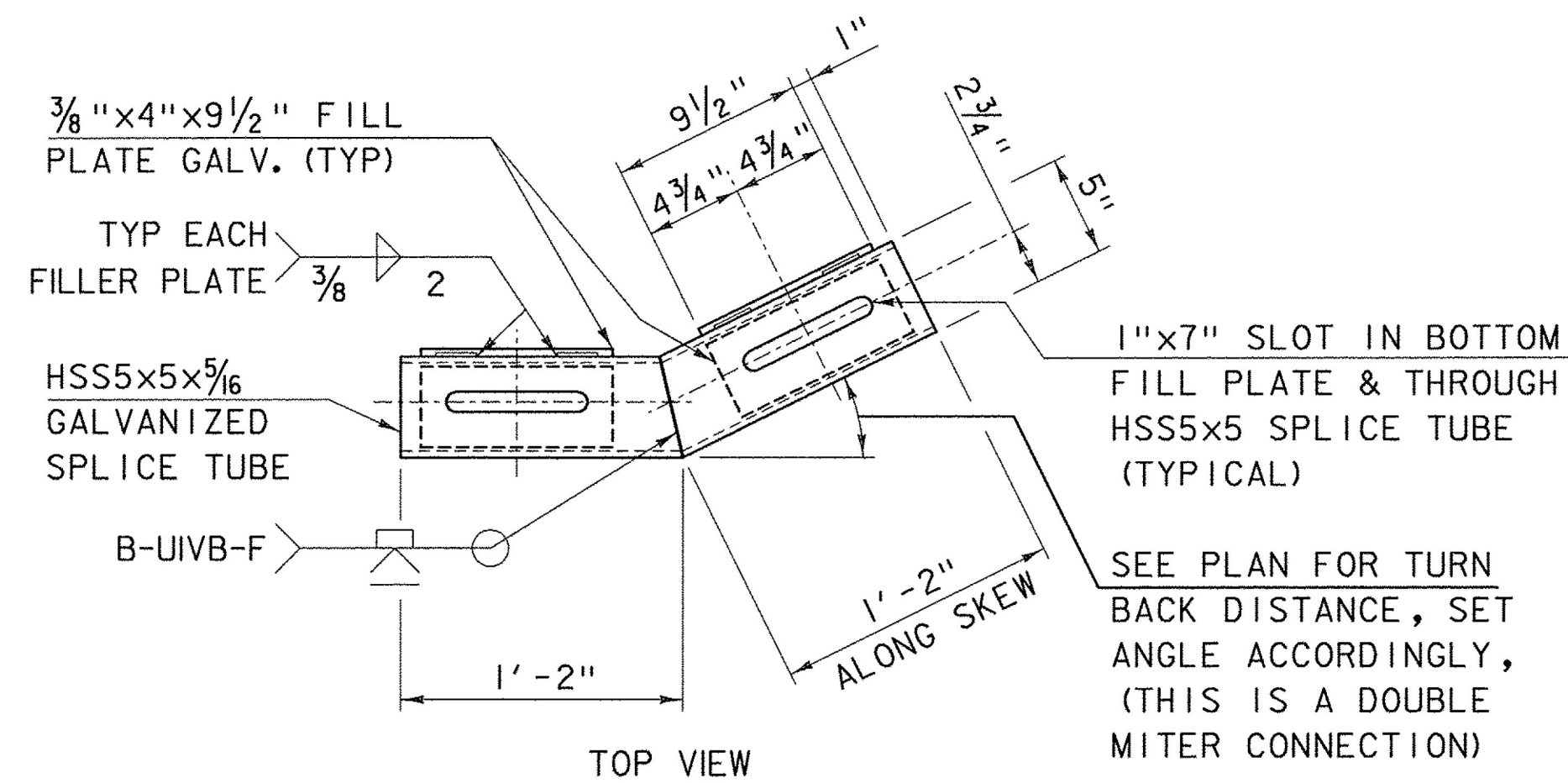
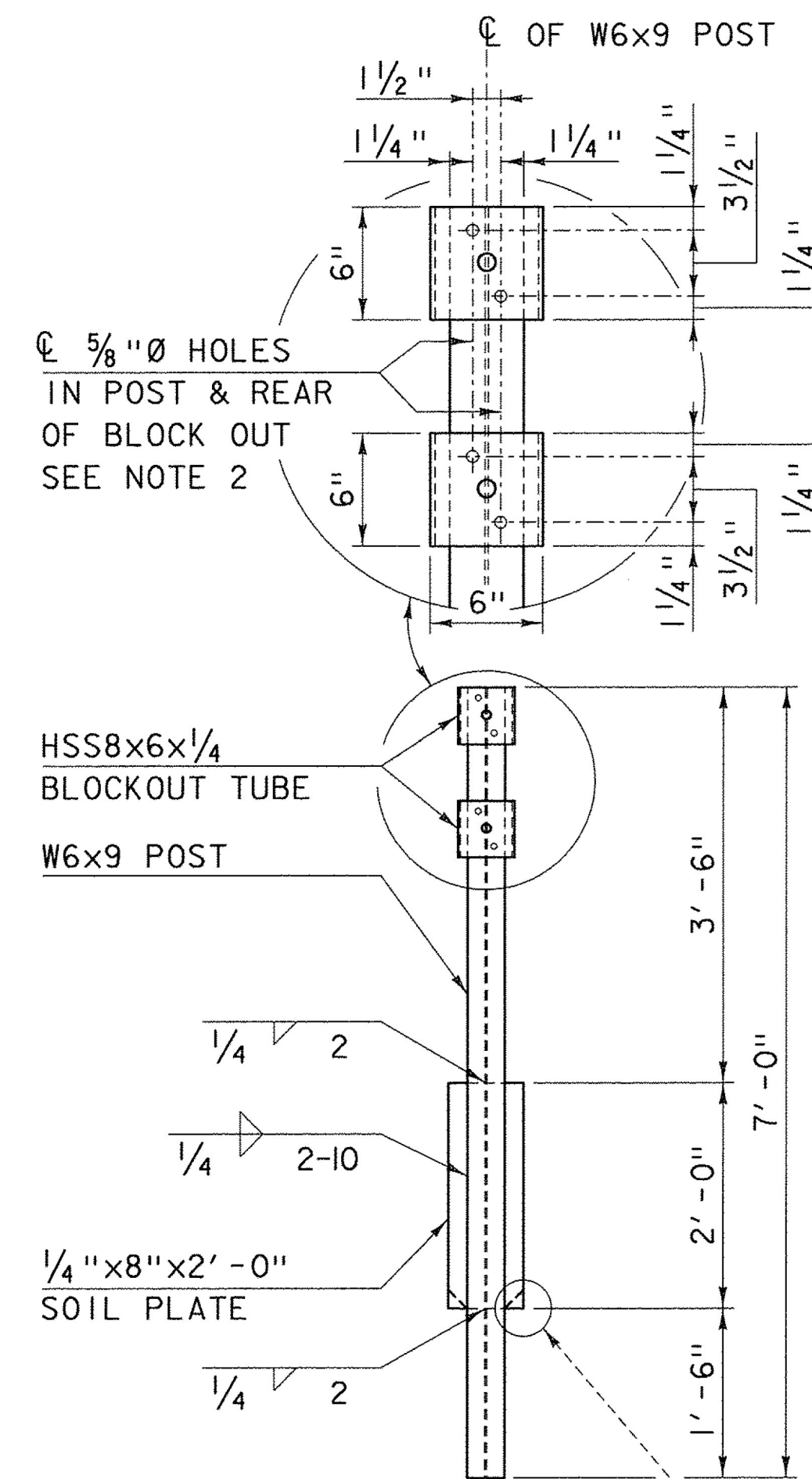
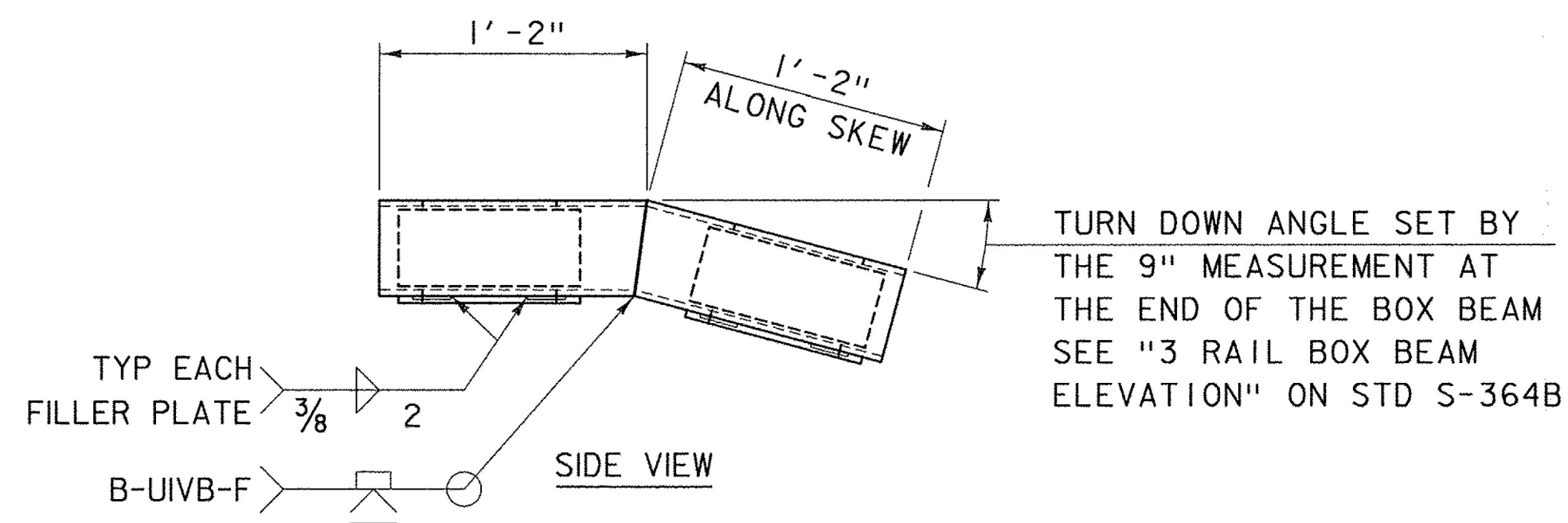


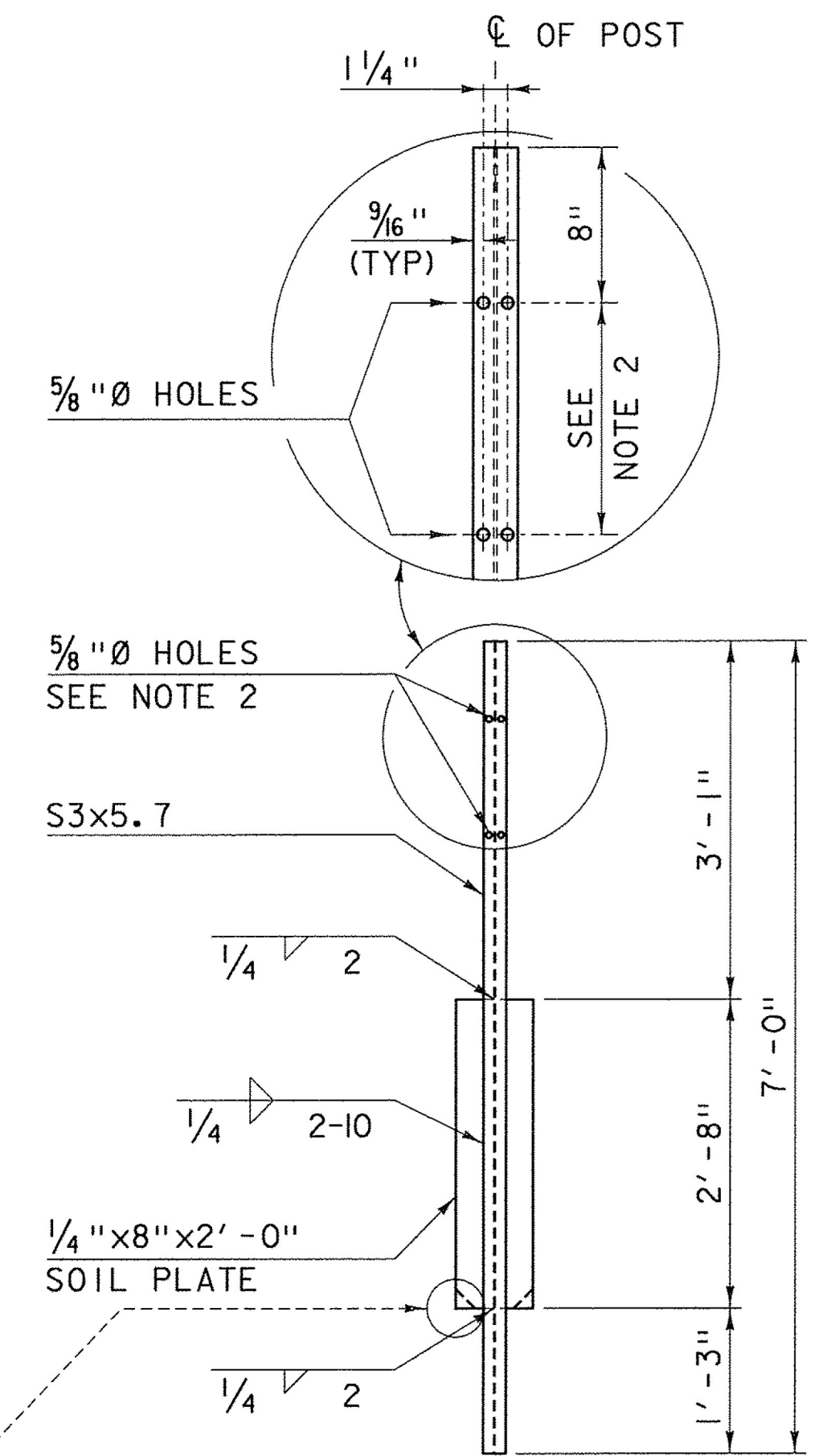
TURN BACK SPLICE TUBE ASSEMBLY



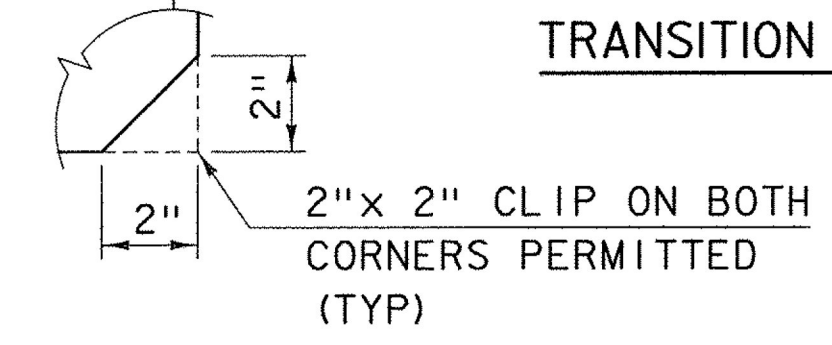
TURN BACK SPLICE TUBE DETAIL
TURN BACK & TURN DOWN TUBE JOINT



HEAVY POST DETAIL



TRANSITION POST DETAIL



NOTES:

1. PROTRUSIONS CAUSED BY WELDING OR GALVANIZING ARE NOT PERMITTED ON THE ADJOINING SURFACES OF THE BOX BEAM RAILS, SPLICE TUBES AND FILL PLATES.
2. HOLES IN THE POST FOR THE LOWER RAIL MAY BE LOCATED AND DRILLED IN THE FIELD. IF SO, THE GALVANIZING SHALL BE REPAIRED IN ACCORDANCE WITH SPECIFICATION SECTION 525.

OTHER STDS. REQUIRED:

REVISIONS AND CORRECTIONS
AUGUST 9, 2010 - ORIGINAL APPROVAL
APRIL 23, 2012 - GENERAL UPDATE 2012

APPROVED

Wm. Michael Hedyc
STRUCTURES PROGRAM MANAGER

Richard Fetsch
DIRECTOR OF PROGRAM DEVELOPMENT

Mark D. Richter
FEDERAL HIGHWAY ADMINISTRATION

GUARDRAIL APPROACH
SECTION, GALVANIZED
3 RAIL BOX BEAM



STANDARD
S - 364D