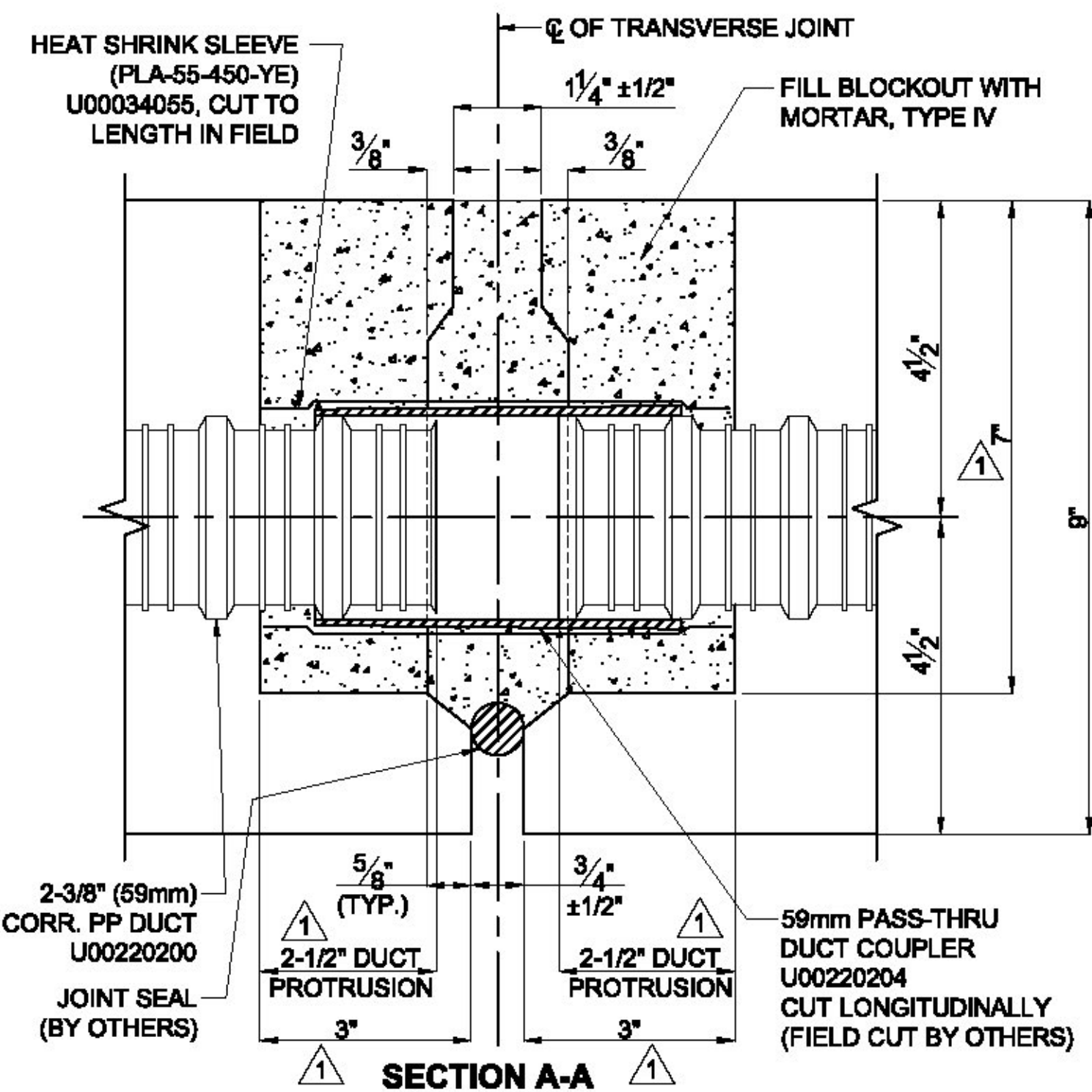
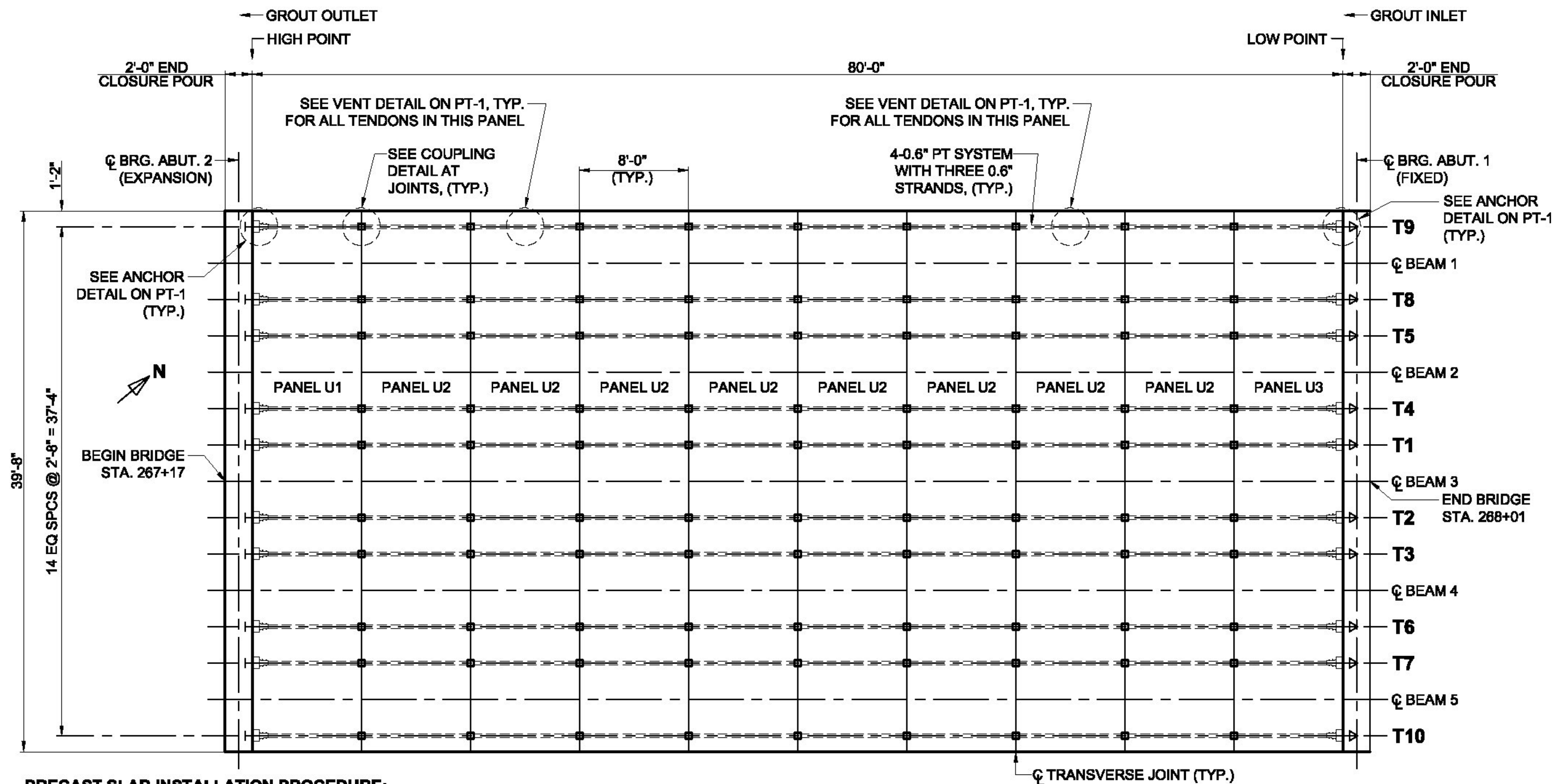


COUPLING DETAIL AT JOINTS
(USED AT DUCT BLOCKOUT IN BETWEEN PANELS)



SECTION A-A



PRECAST SLAB INSTALLATION PROCEDURE:

1. ERECT DECK SLABS.
2. ADJUST SLABS TO GRADE USING LEVELING DEVICES. ALL LEVELING BOLTS SHALL BE TORQUED TO APPROXIMATELY THE SAME VALUE WITHIN 20%.
3. INSTALL DUCT COUPLER AS SHOWN. INSTALL PT STRANDS LOOSE IN DUCT
4. COMPLETE OTHER WORKS PER CONTRACT PLANS SHEET 4 OF 42..
5. STRESS PT TENDONS FOLLOWING THE PROVIDED STRESSING SEQUENCE ON THIS SHEET. MAKE SURE TO STRESS EACH OF 3 STRANDS IN EACH TENDON TO THE REQUIRED JACKING FORCE FOLLOWING THE SEQUENCE AS SHOWN ON SHEET PT-1. SEE TABLE FOR JACKING FORCE AND ELONGATIONS
6. AFTER STRESSING RECORDS ARE APPROVED BY ENGINEER OF RECORDS, CUT TAILS AND GROUT EACH DUCT FROM THE NORTH END AS SHOWN. USE ALL OTHER GROUT TUBES AS VENT.
7. POURBACK THE BLOCKOUTS WITH NON-SHRINK GROUT

POST-TENSIONING LAYOUT PLAN

TENDON	100% JACKING FORCE PER STRAND (KIPS)	LOCK-OFF FORCE PER STRAND (KIPS)	REQUIRED ELONGATION BETWEEN 20% AND 100%	
			BEFORE LOCK-OFF (IN)	AFTER LOCK-OFF (IN)
ALL	33.4	30.7	4.28	3.96

LEGEND

- T1 - STRESSING SEQUENCE
- TENDON MARK
- ➔ STRESSING END
- ├ DEAD END

Vermont Agency of Transportation
RECEIVED
CK'D BY CLD OK'D BY TAS
December 7, 2016
RESUBMIT No Approved
BY T Sumner DATE 12/16/16

OWNER: State of Vermont Agency of Transportation	DYWIDAG SYSTEMS INTERNATIONAL, USA INC. DOES NOT ASSUME ANY LIABILITY FOR THE DESIGN OF THIS STRUCTURE. THIS SHOP DRAWING IS INTENDED TO PROVIDE POST TENSIONING DETAILS ONLY.						
CONTRACTOR: CONSTRUCTIVE SERVICES, INC.	WEIGHT	REV.	DATE	ISSUE DESCRIPTION	NAME	CHKD.	JOB NUMBER
PROJECT: LUDLOW VT DECK PANELS		0	11-11-16	FOR APPROVAL	GM	SN	J115139
DECK SLAB TENDON LAYOUT AND STRESSING SCHEDULE		1	11-22-16	FOR FINAL APPROVAL	GM	SN	
DATE: 11-10-16 DWG: GM CHK: SN APP: SN	SCALE						DRAWING NUMBER:
THIS DRAWING, THE PERTINENT ENCLOSURES, DESCRIPTIONS, CALCULATIONS ETC. AND THEIR CONTENTS ARE THE PROPERTY OF DYWIDAG SYSTEMS INTERNATIONAL, USA, INC. THEY ARE NOT ALLOWED TO BE DUPLICATED WITHOUT OUR PERMISSION. THEY ARE ALSO NOT TO BE SHOWN OR EXPLAINED FOR ANY REASON TO A THIRD PARTY OTHER THAN FOR REASONS EXPRESSLY INTENDED BY DSI% SUBMITTAL TO THE ORIGINAL RECEIVER. THEY HAVE TO BE RETURNED UPON REQUEST.	3/32" = 1'-0" 3" = 1'-0"						PT-2
	DYWIDAG-SYSTEMS INTERNATIONAL, USA, INC. POST TENSIONING / REINFORCING UNIT PHONE: 630-739-1100 320 MARMON DRIVE - BOLINGBROOK, IL FAX: 630-739-1405						