

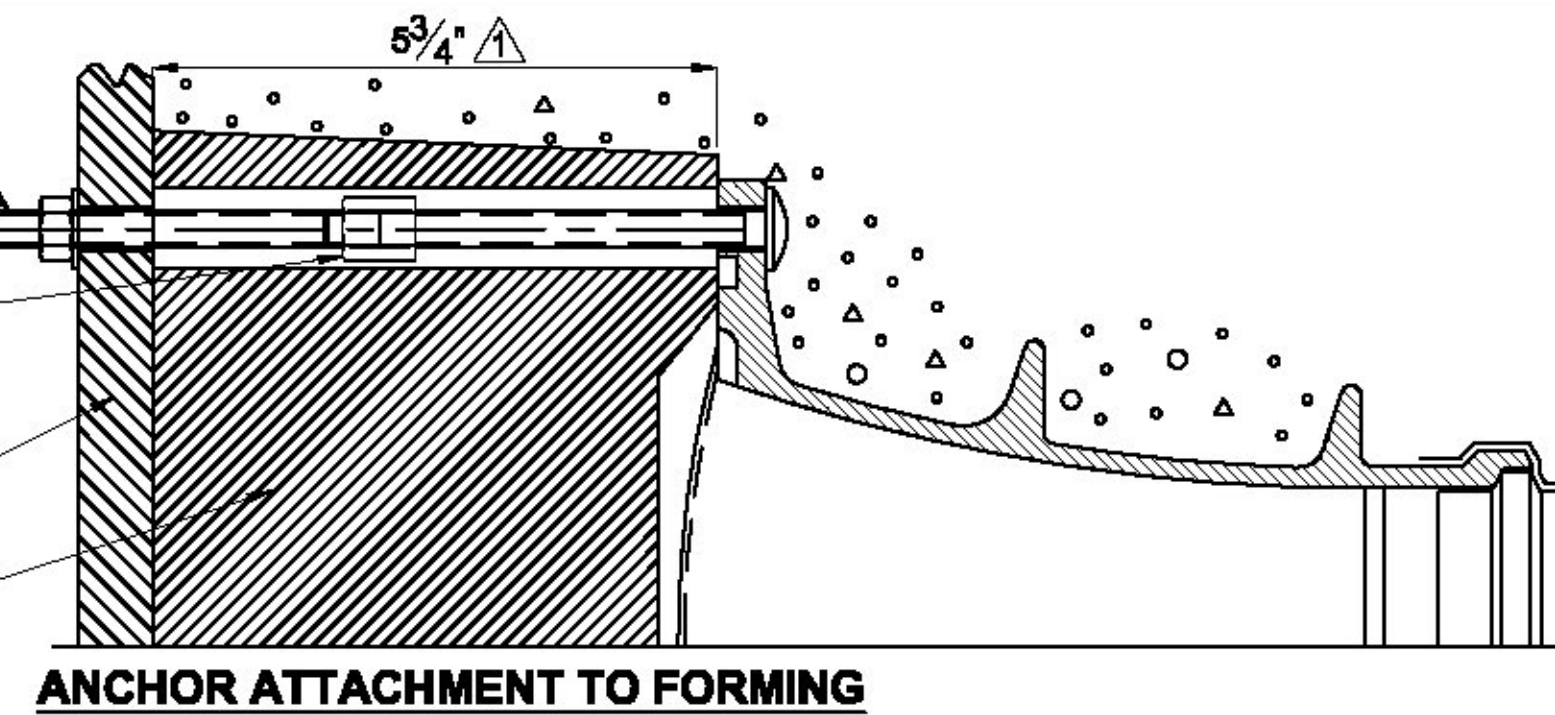
3/8"-16UNC STUD
(4" LONG SHOWN)
WITH NUT & WASHER
(BY OTHERS)

3/8"-16UNC COUPLER
ZINC PLATED
(BY OTHERS)

FORMWORK
(BY OTHERS)

POCKET FORMER
(BY OTHERS)

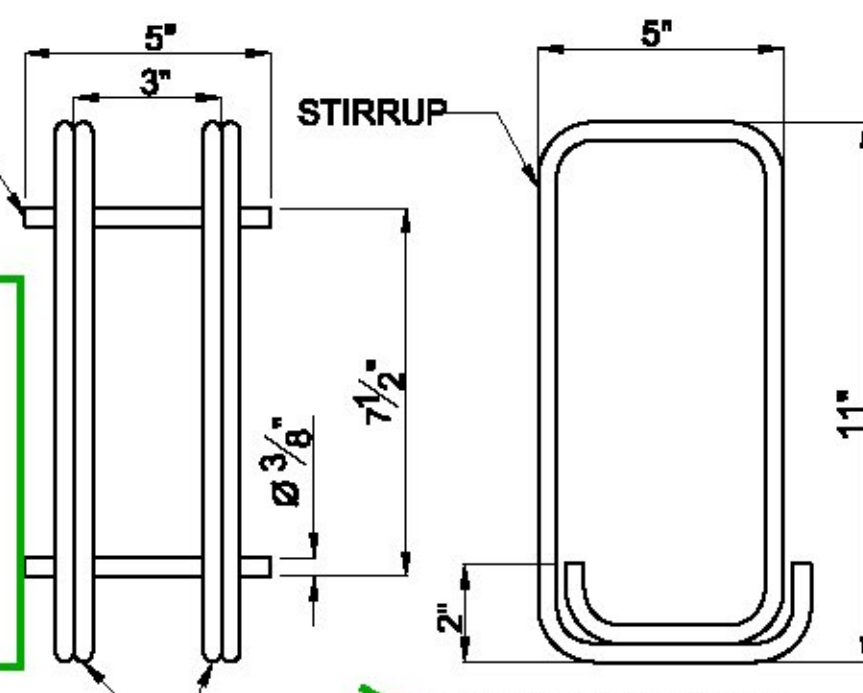
MAKE SURE THE GROOVE IN
ANCHOR IS PROTECTED.



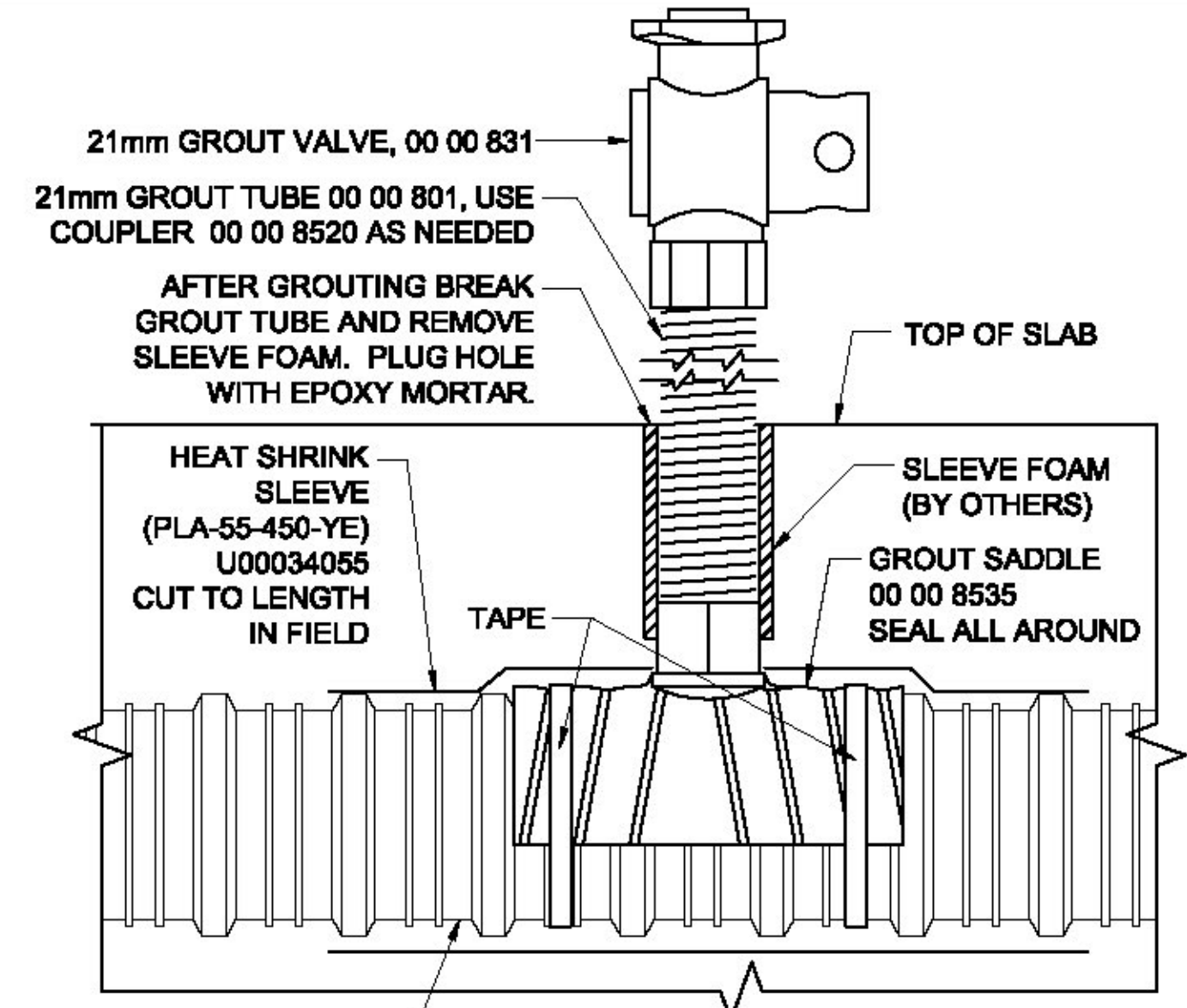
ANCHOR ATTACHMENT TO FORMING

(4) PCS #3 REBAR
(BY OTHERS)

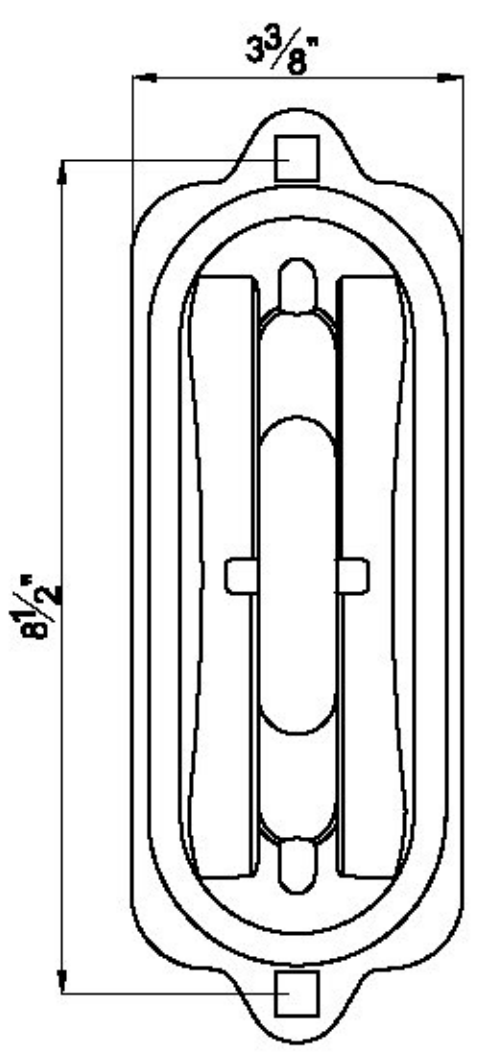
Precast
shops show
#4 bars.
Please
revise.



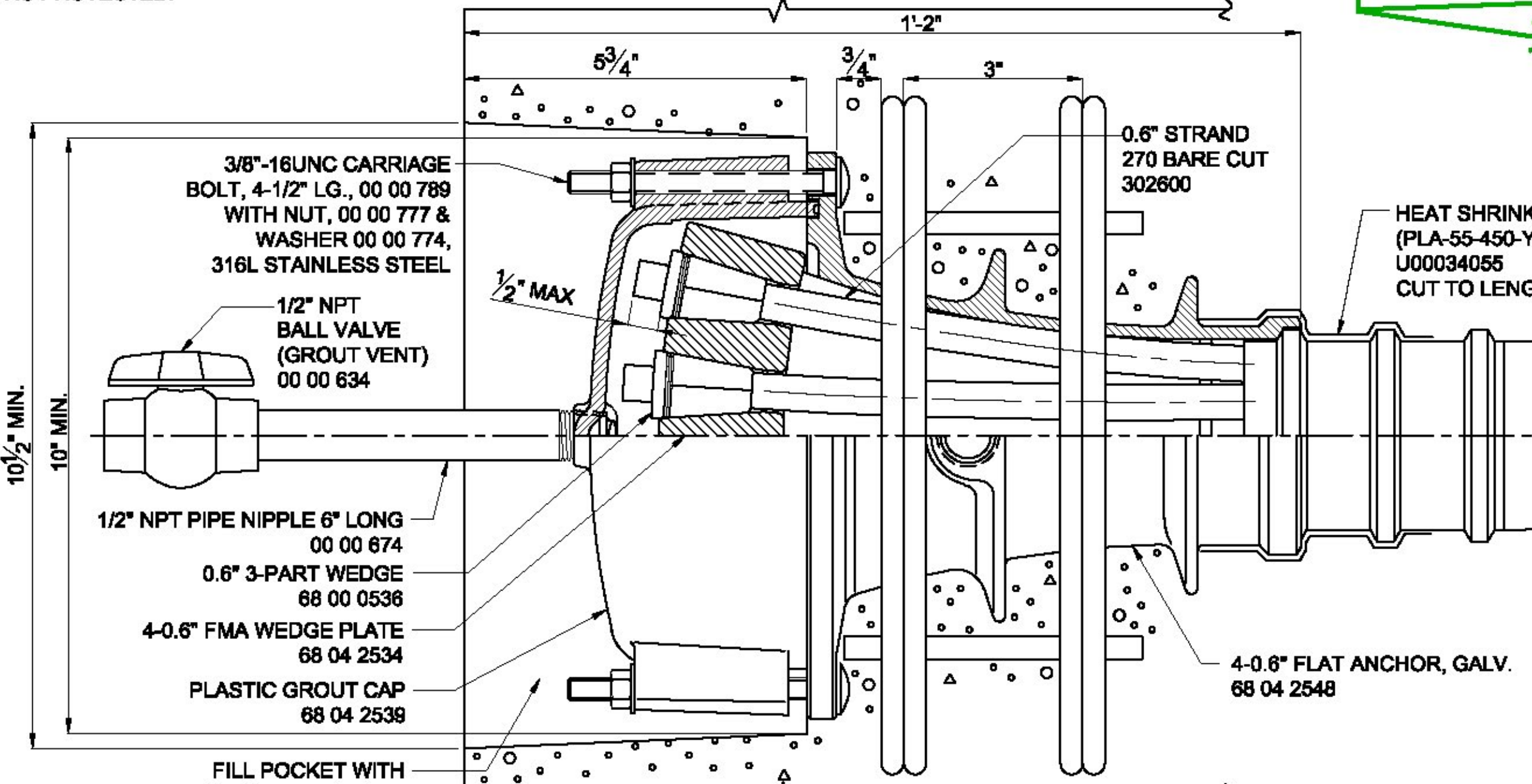
BAR BENDING DIAGRAM



VENT DETAIL



**FMA ANCHOR
END VIEW**

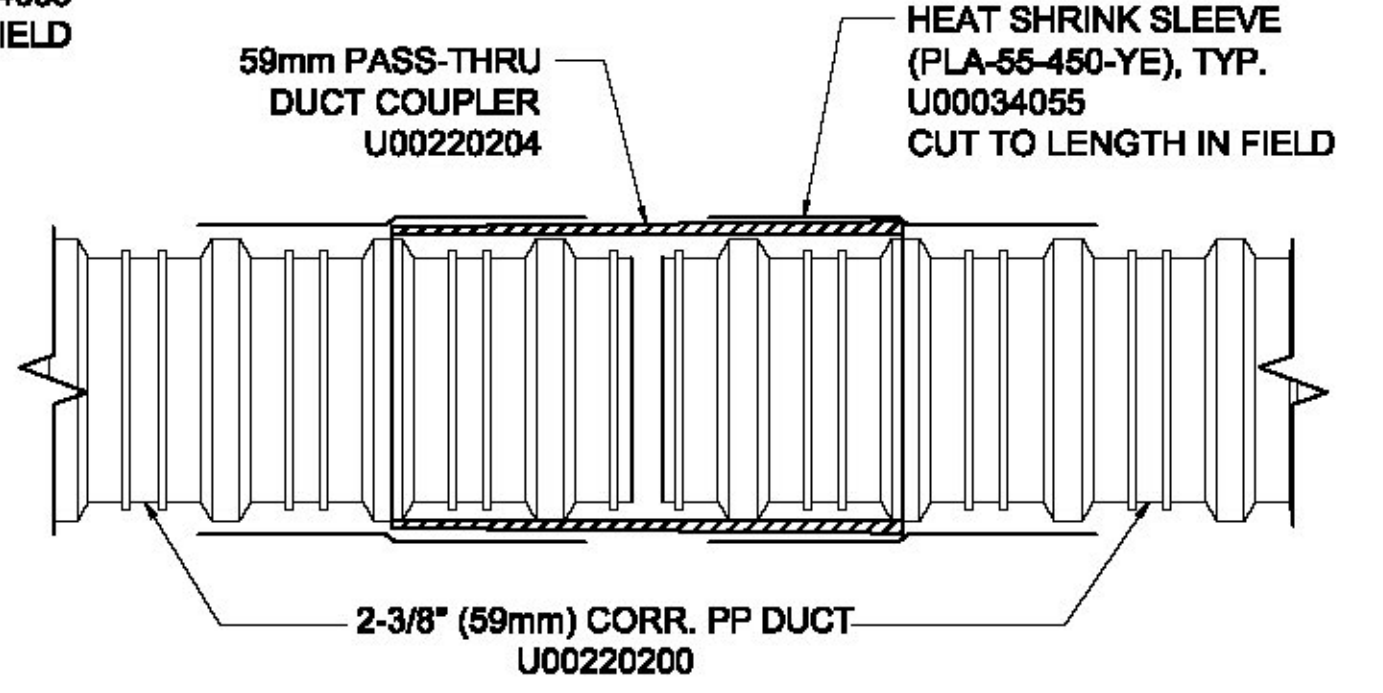


FLAT ANCHOR PLAN

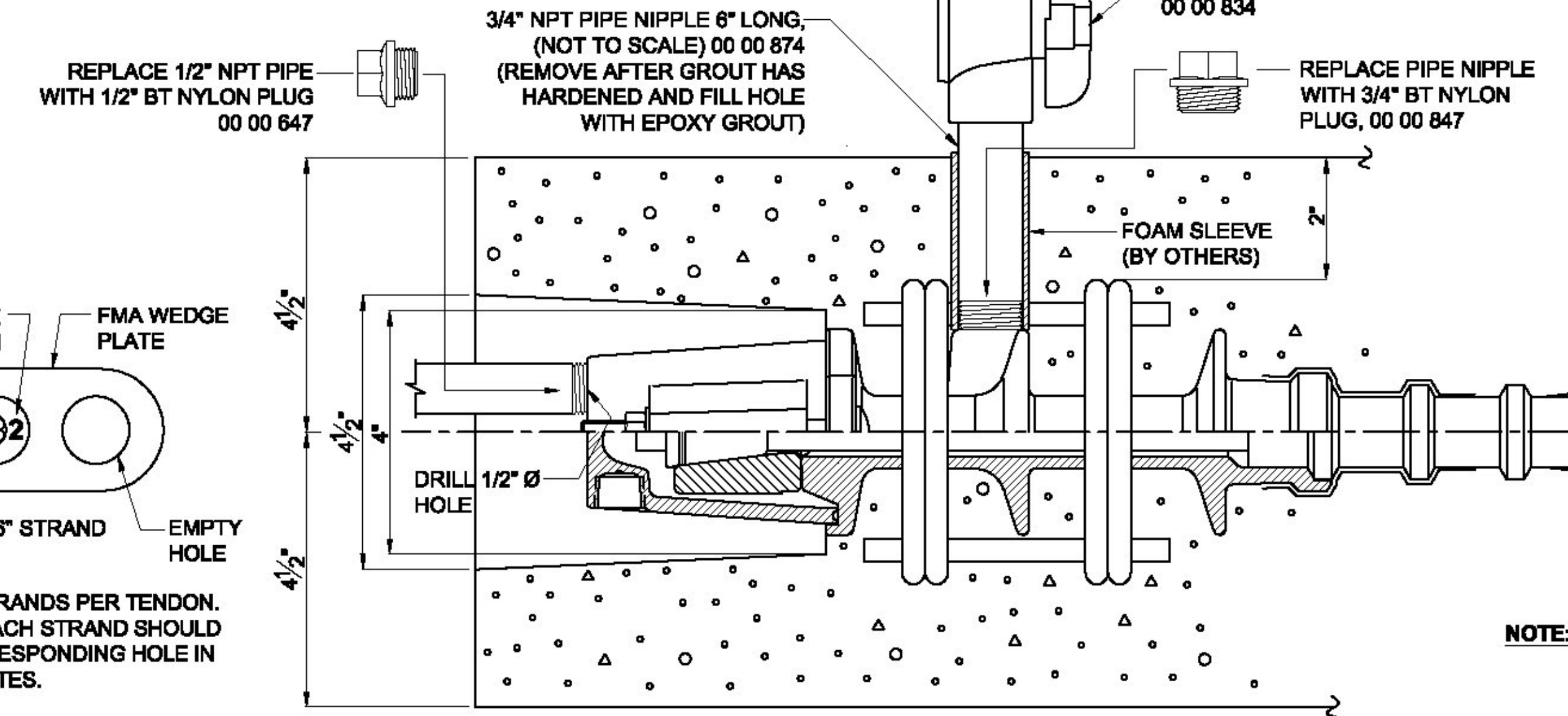
WARNING: READ AND COMPLY WITH ALL APPLICABLE SAFETY AND OPERATING INSTRUCTIONS AND WARNINGS FOR MULTI-STRAND STRESSING BEFORE STARTING ANY WORK OR OPERATION.

CAUTION: WHEN PRESSURIZING GROUT CAPS, DO NOT STAND BEHIND CAPS!

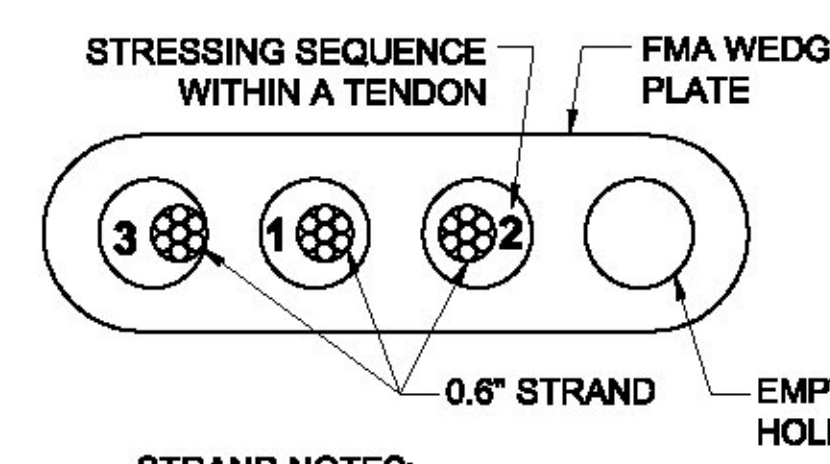
HEAT SHRINK SLEEVE
(PLA-55-450-YE)
U00034055
CUT TO LENGTH IN FIELD



**DUCT COUPLING DETAIL
(USED INSIDE PANEL)**



FLAT ANCHOR ELEVATION



STRESSING SEQUENCE WITHIN A TENDON

3 1 2

0.6" STRAND

EMPTY HOLE

STRAND NOTES:
1. USE THREE (3) STRANDS PER TENDON.
2. BOTH ENDS OF EACH STRAND SHOULD ALIGN WITH CORRESPONDING HOLE IN BOTH WEDGE PLATES.

NOTE: OTHER REQUIRED REINFORCING BARS NOT SHOWN.

Vermont Agency of Transportation
RECEIVED
CK'D BY CLD OK'D BY TAS
December 7, 2016
RESUBMIT No Approved AsNoted
BY T Sumner DATE 12/16/16

PART NO.	DESCRIPTION	MATERIAL SPECIFICATION	PART NO.	DESCRIPTION	MATERIAL SPECIFICATION
302600	0.6" STRAND 270 BARE CUT	0.6" DIA. LOWLAX STRAND PER ASTM A416	00 00 834	3/4" NPT BALL VALVE	PVC
68 04 2548	4-0.6" FMA ANCHOR GALV.	DUCTILE IRON, 80-55-06 ASTM A536	00 00 834	1/2" NPT BALL VALVE	PVC
68 04 2534	4-0.6" FMA WEDGE PLATE	DUCTILE IRON, 80-55-06 ASTM A536	00 00 847	3/4" BT PLUG	NYLON
68 04 2539	4-0.6" PLASTIC GROUT CAP	NYLON 6, 20% GLASS FILLED	00 00 847	1/2" BT PLUG	NYLON
68 00 0536	0.6" 3-PART WEDGE	COLD DRAWN C12L14 BAR	00 00 789	3/8"-16UNC CARRIAGE BOLT 4-1/2" LG.	
U00220200	2-3/8" (59mm) CORR. PP DUCT	PPEX3	00 00 777	HEX NUT	316L STAINLESS STEEL
U00220204	59mm PASS-THRU DUCT COUPLER	HDPE OR POLYPROPENE	00 00 774	WASHER	
68 04 2538	1" x3" TO Ø59mm TRANSITION PIECE	POLYETHYLENE	00 00 8535	GROUT SADDLE	HDPE
U00034055	HEAT SHRINK SLEEVE PLA-55-450-YE	PER CANUSA SPECS.	00 00 801	21mm GROUT TUBE	HDPE
00 00 874	3/4" NPT PIPE NIPPLE 6" LONG	SCH 40 BLACK WELDED STEEL	00 00 8520	21mm GROUT TUBE COUPLER	HDPE
00 00 874	1/2" NPT PIPE NIPPLE 6" LONG	SCH 40 BLACK WELDED STEEL	00 00 831	21mm GROUT VALVE	PLASTIC

OWNER: State of Vermont Agency of Transportation

CONTRACTOR: CONSTRUCTIVE SERVICES, INC.

PROJECT: LUDLOW VT DECK PANELS

**4-0.6" FLAT ANCHORAGE SYSTEM
ASSEMBLY DRAWING**

DATE: 11/10/16 DWG: GM CHK: SN APP: SN

THIS DRAWING, THE PERTINENT ENCLOSURES, DESCRIPTIONS, CALCULATIONS ETC. AND THEIR CONTENTS ARE THE PROPERTY OF DYWIDAG SYSTEMS INTERNATIONAL, USA, INC. THEY ARE NOT ALLOWED TO BE DUPLICATED WITHOUT OUR PERMISSION. THEY ARE ALSO NOT TO BE SHOWN OR EXPLAINED FOR ANY REASON TO A THIRD PARTY OTHER THAN FOR REASONS EXPRESSLY INTENDED BY DSI'S SUBMITTAL TO THE ORIGINAL RECEIVER. THEY HAVE TO BE RETURNED UPON REQUEST.

DYWIDAG SYSTEMS INTERNATIONAL, USA INC. DOES NOT ASSUME ANY LIABILITY FOR THE DESIGN OF THIS STRUCTURE. THIS SHOP DRAWING IS INTENDED TO PROVIDE POST TENSIONING DETAILS ONLY.

WEIGHT	REV.	DATE	ISSUE DESCRIPTION	NAME	CHKD.	JOB NUMBER
	0	11/11/16	FOR APPROVAL	GM	SN	J115139
	1	11/22/16	FOR FINAL APPROVAL	GM	SN	

SCALE: 1:4

DRAWING NUMBER: **PT - 1**

DYWIDAG-SYSTEMS INTERNATIONAL, USA, INC.
POST TENSIONING / REINFORCING UNIT PHONE: 630-739-1100
320 MARMON DRIVE - BOLINGBROOK, IL FAX: 630-739-1405