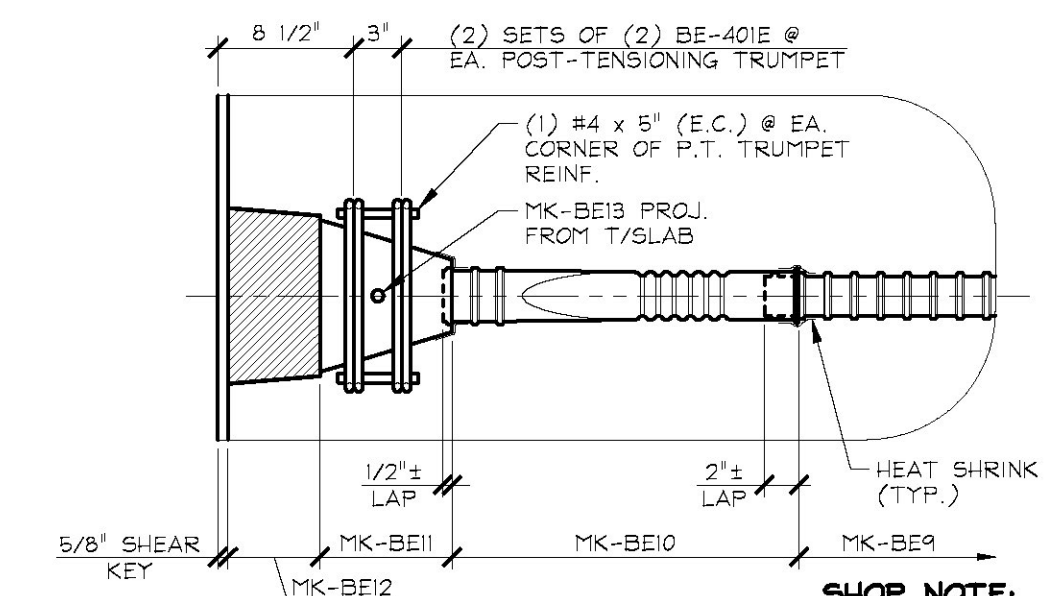
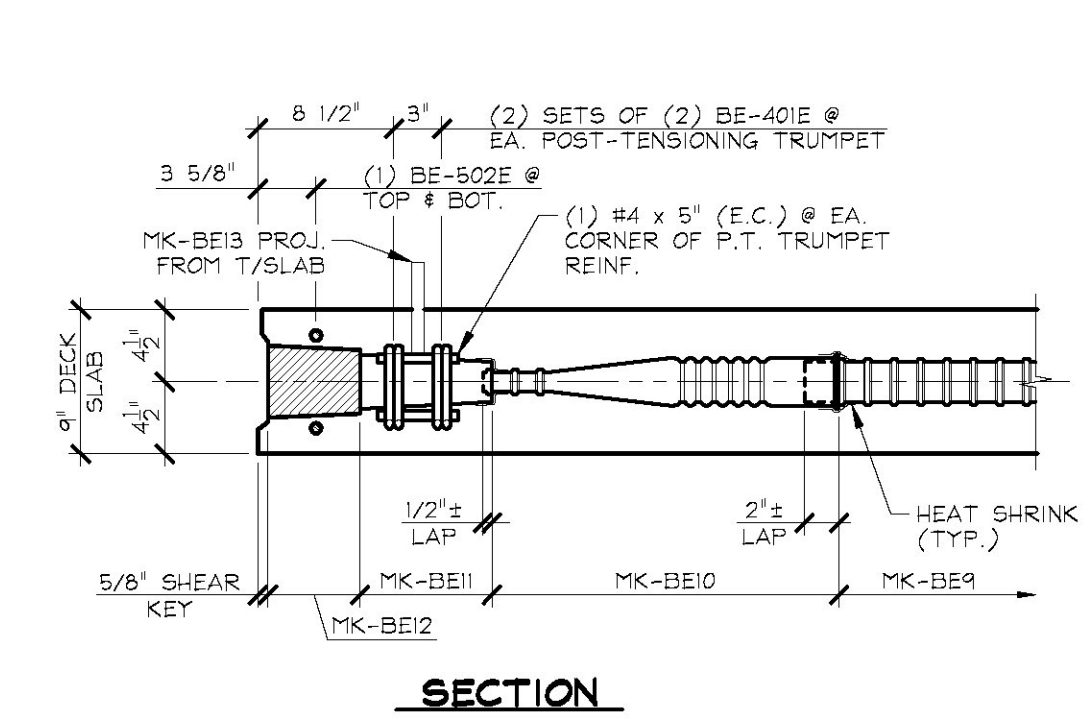
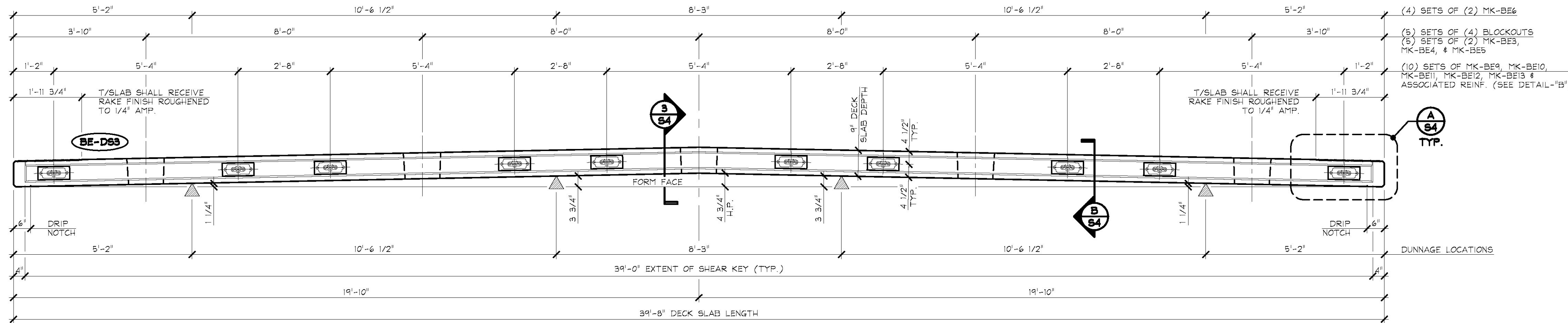


**1** DIMENSIONAL PLAN VIEW IN FORM  
S4 1/2" = 1'-0"

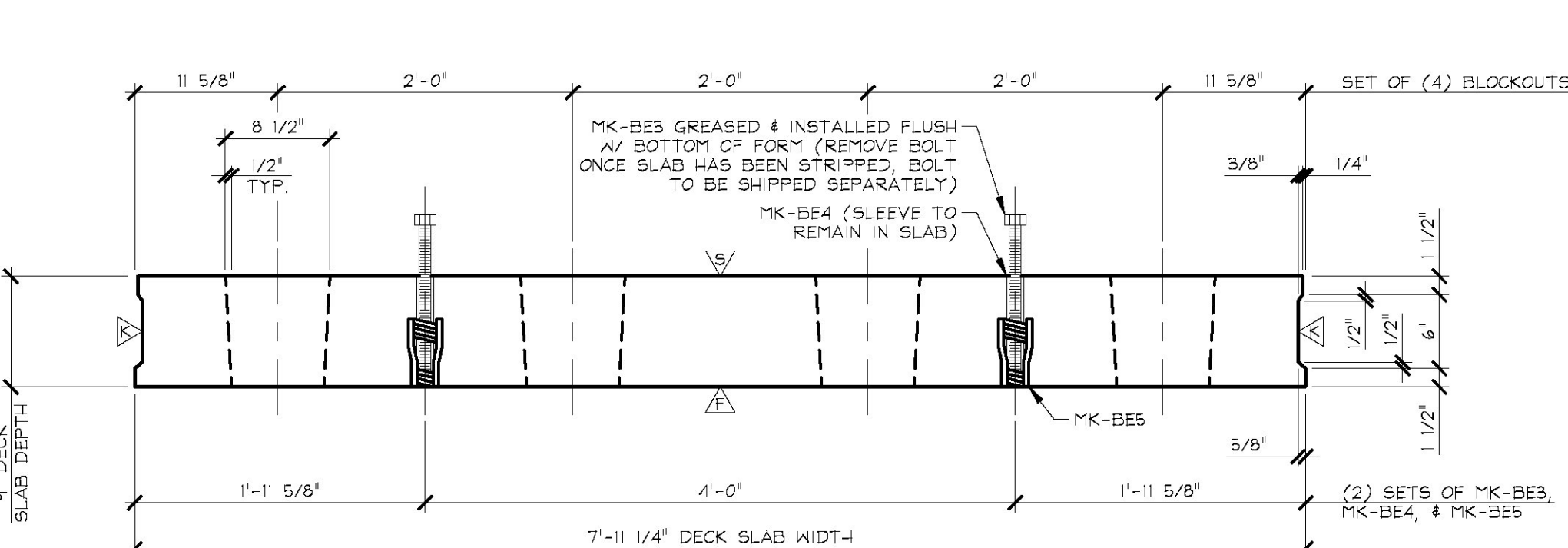


**SHOP NOTE:**  
MK-BE9 LENGTH SHOWN IS BASED ON LAP DIMENSIONS SHOWN. ADJUST LENGTH PER LAP DIMENSIONS ACTUALLY USED FOR POST-TENSIONING EQUIPMENT SUPPLIED BY OTHERS.

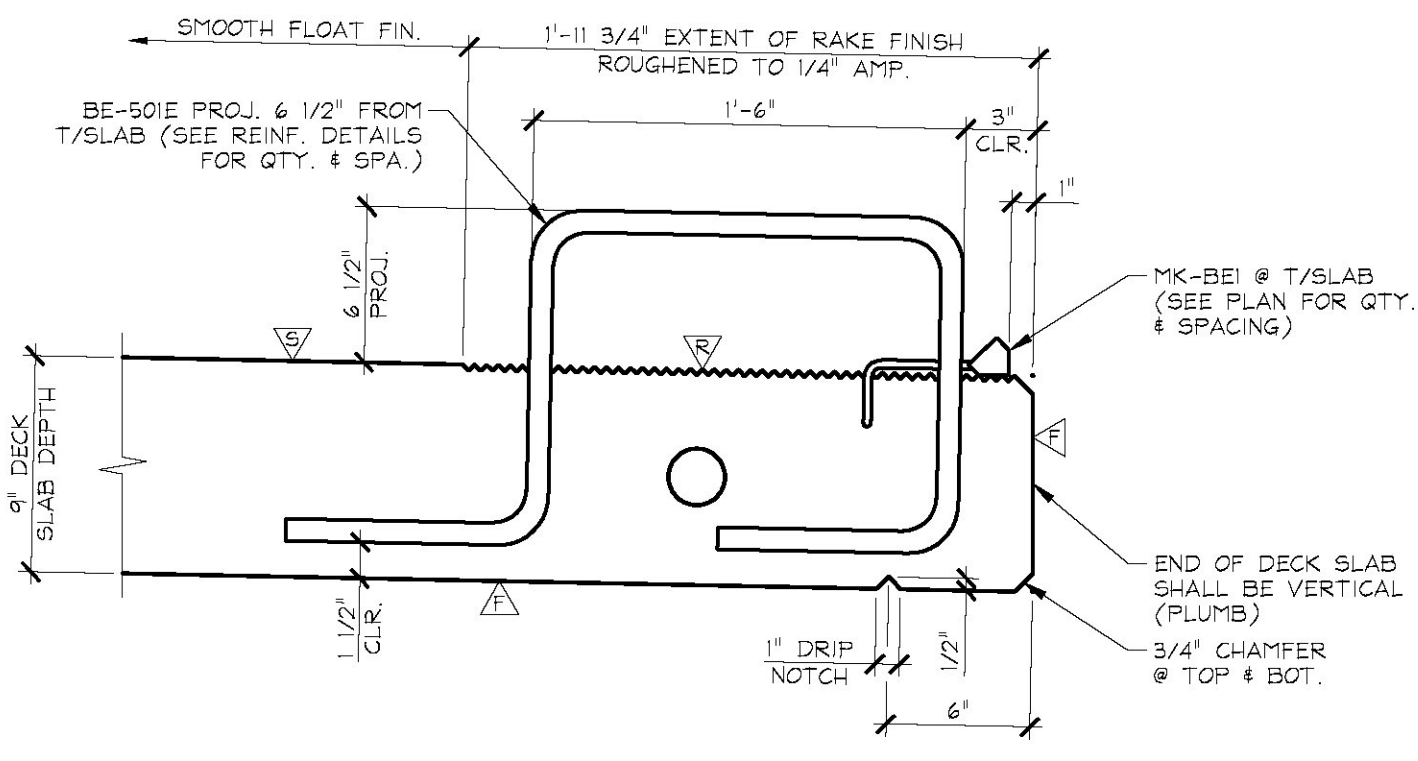
**B** DETAIL - "B"  
S4 1" = 1'-0"



**2** DIMENSIONAL ELEVATION  
S4 1/2" = 1'-0"



**3** DIMENSIONAL SECTION  
S4 1" = 1'-0"



**A** SECTION - "A"  
S4 1 1/2" = 1'-0"

- △ DENOTES FORM FINISH
- △ DENOTES SMOOTH FLOAT FINISH
- △ DENOTES ROUGHENED FINISH (SEE GENERAL NOTE #8, SHEET #1)
- △ DENOTES RAKE FINISH ROUGHENED TO 1/4" AMPLITUDE

**SHOP NOTE:**  
SEE DRAWING NO. "S5" FOR REINFORCING INFORMATION

MARK:	BE-DS3	QTY.:	2	WT.:	17.02 T	VOL.:	8.41 cy
MATERIAL LIST / DECK SLAB							
ITEM	MARK	DESCRIPTION	QTY.				
1	MK-BE1	DAYTON C-24 TYPE 4-APR DECK FORM HANGER (GALV.)	4				
2	MK-BE3	1"φ x 1'-2" LEVELING BOLT (COIL THREAD)	10				
3	MK-BE4	1 3/8"φ O.D. x 6 1/4" PVC PIPE SLEEVE	10				
4	MK-BE5	DAYTON 1"φ F-56 EXPANDED COIL INSERT (2-STRUT) (GALV.)	10				
5	MK-BE6	4T x 7 1/8" SWIFT LIFT LIFTER (GALV.)	8				
6	MK-BE9	GT1 2 3/8" x 5'-0 7/8" LONG CORRUGATED FIP DUCT (SUPPLIED BY OTHERS)	10				
7	MK-BE10	GT1 1"x3" TRANSITION PIECE (SUPPLIED BY OTHERS)	10				
8	MK-BE11	POST-TENSIONING TRUMPET [DS1 4-0 6" FLAT ANCHOR (GALV.) w/ HARDWARE] (SUPPLIED BY OTHERS)	10				
9	MK-BE12	DS1 POCKET FORMER (SUPPLIED BY OTHERS)	10				
10	MK-BE13	3/4" x 6" NPT PIPE NIPPLE (SUPPLIED BY OTHERS)	10				
11		HEAT SHRINK (SUPPLIED BY OTHERS)	AS REQ'D.				
12							
13	BE-401E	#4 BENT BAR (EPOXY COATED)	40				
14		#4 x 0'-5" (EPOXY COATED)	40				
15							
16	BE-502E	#6 BENT BAR (EPOXY COATED)	2				
17							
18							
19							

APPROVAL STAMP:

**J.P. CARRARA & SONS INC.**  
Precast & Prestress Manufacturer  
2484 CASE STR., MIDDLEBURY, VERMONT 05753 Phone:(802)388-6361 Fax:(802)388-9010

THE BELDEN COMPANY  
CONTRACTOR  
RUTLAND, VERMONT

STATE OF VERMONT AGENCY OF TRANSPORTATION  
COUNTY OF WINDSOR

DATE: NOV. 1, 2016  
SCALE: NOTED

TOWN OF LUDLOW  
VT ROUTE 100 (MINOR ARTERIAL)  
BRIDGE NO.: 99 PROJECT NO.: STP DECK(39)

CHKD: A.S. DFTM: B.L.  
JOB NO: 23499-016

PRECAST DECK SLAB  
DIMENSIONAL DETAILS

DWG. NO: **S4**