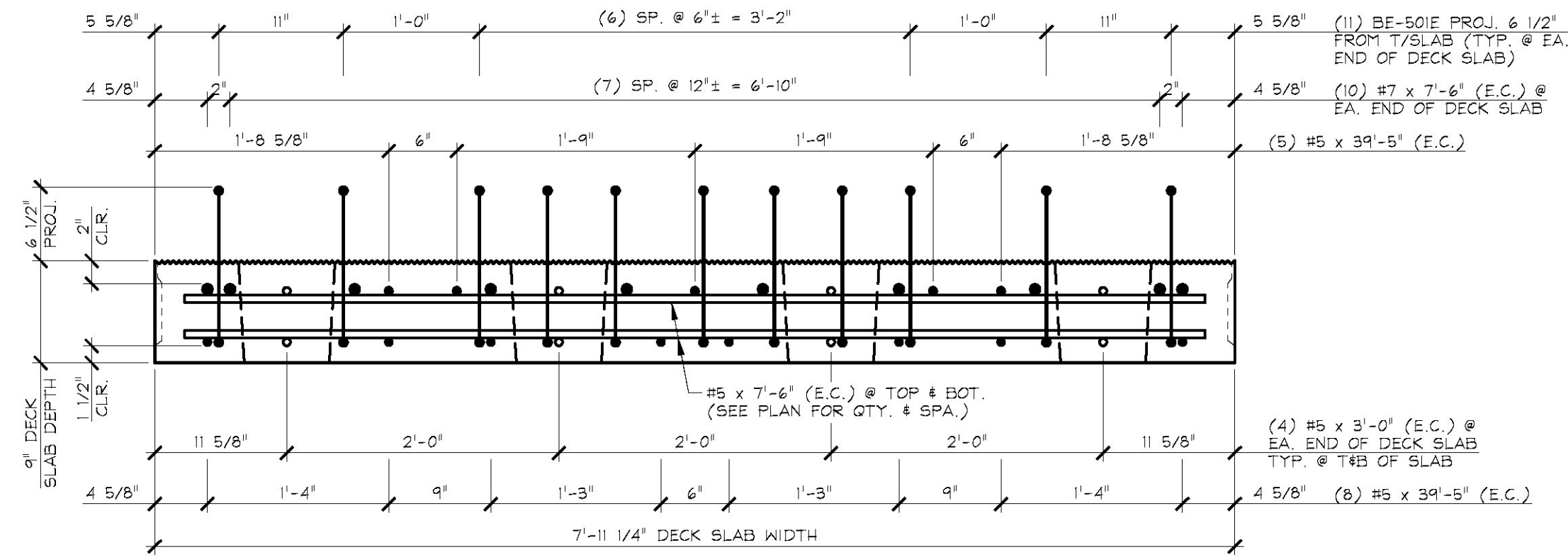
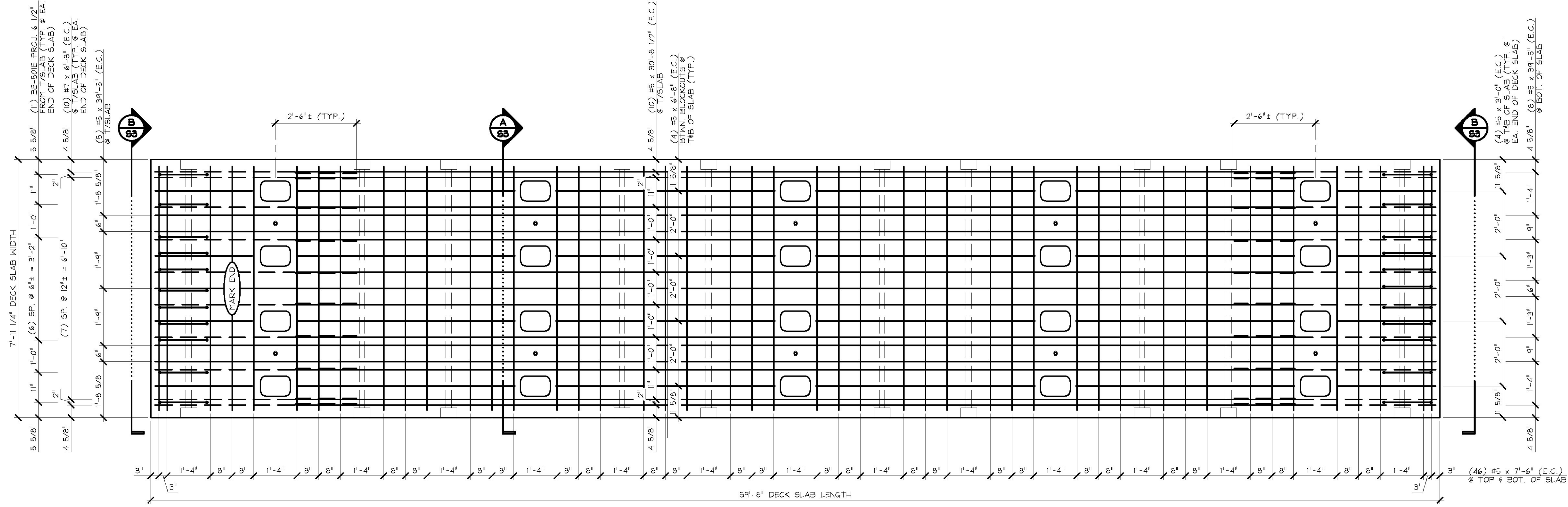


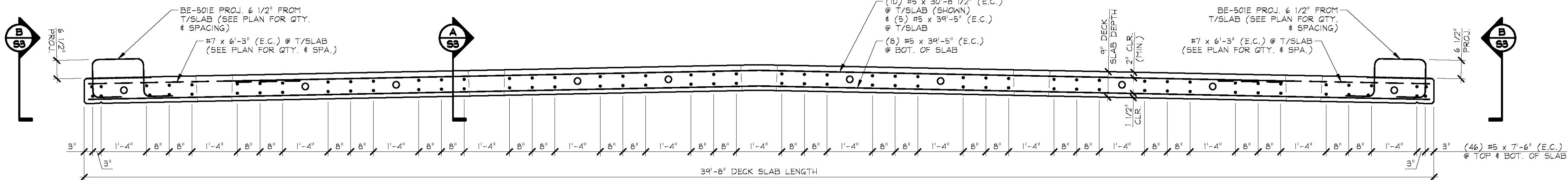
A REINFORCING SECTION
S3 @ MID-SPAN
 1" = 1'-0"



B REINFORCING SECTION
S3 @ BEAM END
 1" = 1'-0"



1 REINFORCING PLAN VIEW IN FORM
S3
 1/2" = 1'-0"



2 REINFORCING ELEVATION
S3
 1/2" = 1'-0"

MARK: BE-DS1	QTY.: 7		
MARK: BE-DS2	QTY.: 1		
MATERIAL LIST / DECK SLAB			
ITEM	MARK	DESCRIPTION	QTY.
1	BE-S01E	#5 BENT BAR (EPOXY COATED)	22
2		#5 x 3'-0" (EPOXY COATED)	16
3		#5 x 6'-8" (EPOXY COATED)	32
4		#5 x 7'-6" (EPOXY COATED)	42
5		#5 x 30'-8 1/2" (EPOXY COATED)	10
6		#5 x 39'-5" (EPOXY COATED)	13
7			
8		#7 x 6'-3" (EPOXY COATED)	20
9			
10			

APPROVAL STAMP:

J.P. CARRARA & SONS INC.
 Precast & Prestress Manufacturer
 2464 CASE STR., MIDDLEBURY, VERMONT 05753 Phone: (802)388-6361 Fax: (802)388-9010

THE BELDEN COMPANY
 CONTRACTOR
 RUTLAND, VERMONT

STATE OF VERMONT AGENCY OF TRANSPORTATION
 COUNTY OF WINDSOR

TOWN OF LUDLOW
 VT ROUTE 100 (MINOR ARTERIAL)
 BRIDGE NO.: 99 PROJECT NO.: STP DECK(39)

DATE: NOV. 1, 2016
 SCALE: NOTED
 CHKD: A.S. DFTM: B.L.
 JOB NO: 23499-016

PRECAST DECK SLAB
 REINFORCING DETAILS

DWG. NO: **S3**