

SKEW Δ	X	Y
20°	1"	1/2"
25°	1 1/2"	3/4"
30°	2"	1 1/4"
35°	2 1/2"	2"
40°	3"	2 1/2"
45°	3 1/2"	3 1/4"
50°	4"	4"
55°	4 1/2"	4 1/4"
60°	5"	5"

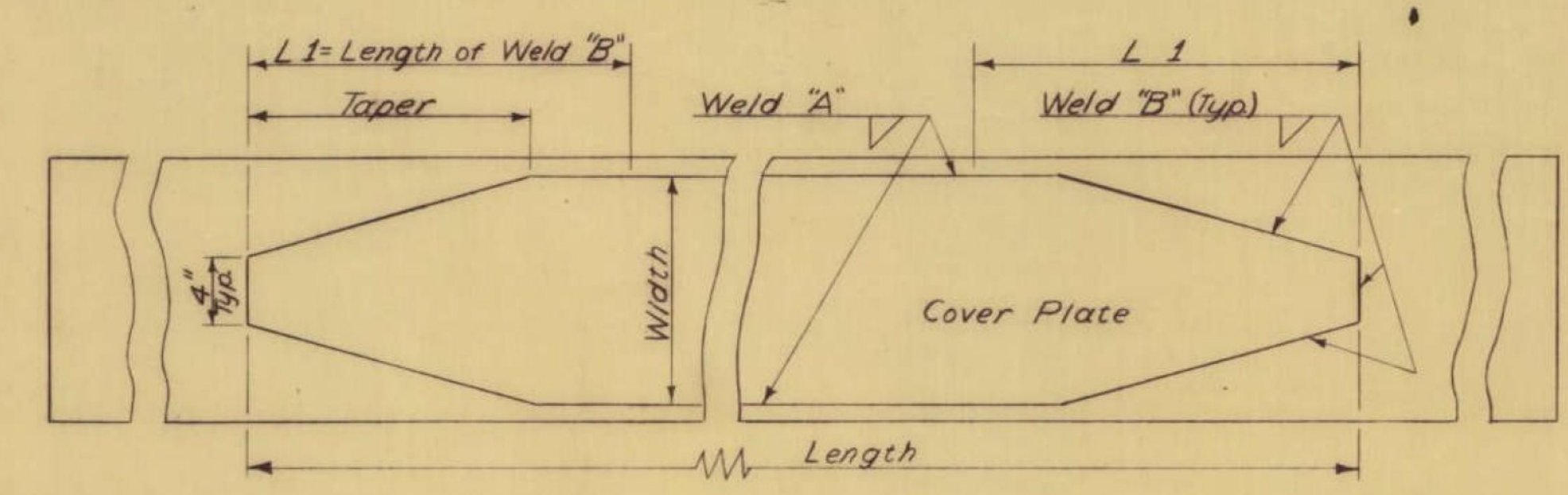
DETAILS OF PIER DIAPHRAGM CONNECTIONS

Max. Design 7'-6" Bm Spacing SCB-24, 30, 38, 44-62

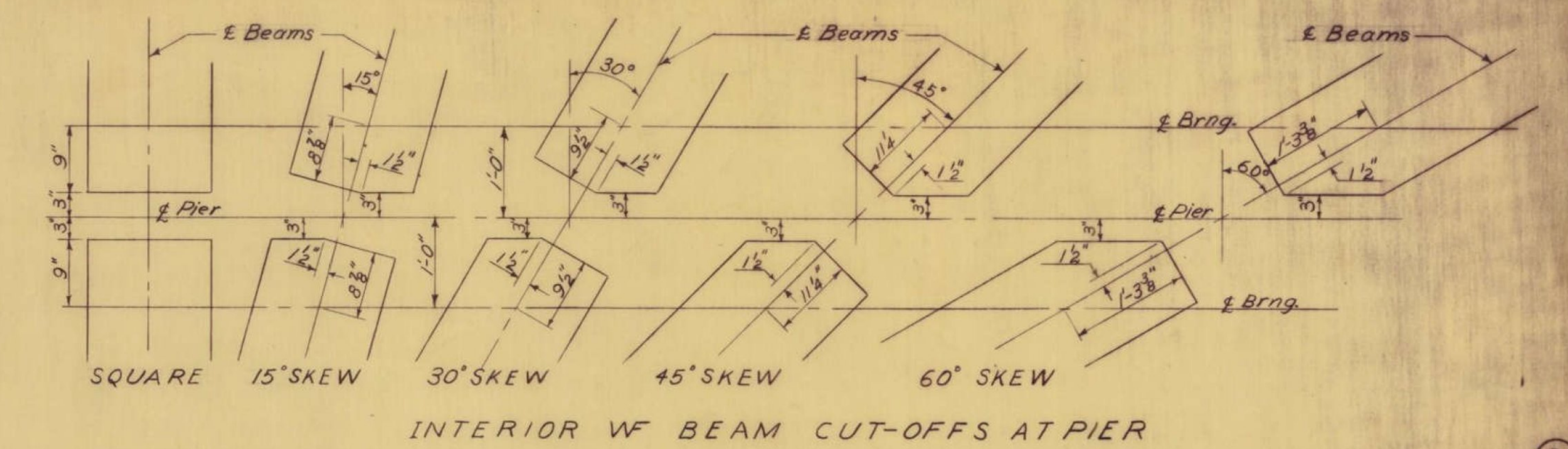
SPAN	COVER PL. LENGTH	WIDTH	THICKNESS	TAPER	WELD 'A'	WELD 'B'	L 1
99'-0"	66'-1"	14"	1 1/2"	1'-6"	3/8"	1/2"	3'-5 1/2"
94'-0"	65'-7"	14"	1 1/2"	1'-6"	3/8"	1/2"	3'-5 1/2"
89'-0"	59'-5"	14"	1 1/2"	1'-6"	3/8"	1/2"	2'-10"
84'-0"	49'-5"	14"	1 1/2"	1'-6"	3/8"	1/2"	1'-11"
79'-0"	49'-10"	10"	1 1/2"	1'-0"	3/8"	1/2"	2'-0"
74'-0"	47'-1"	10"	1 1/2"	1'-0"	3/8"	1/2"	1'-9 1/2"
69'-0"	45'-9"	10"	1 1/2"	1'-0"	3/8"	1/2"	---
64'-0"	42'-5"	10"	1 1/2"	1'-0"	3/8"	1/2"	---
59'-0"	31'-11"	10"	1 1/2"	1'-0"	3/8"	1/2"	---
54'-0"	27'-1"	8"	1 1/2"	1'-0"	3/8"	1/2"	---

Max. Design 7'-0" Bm Spacing SCB-42-62

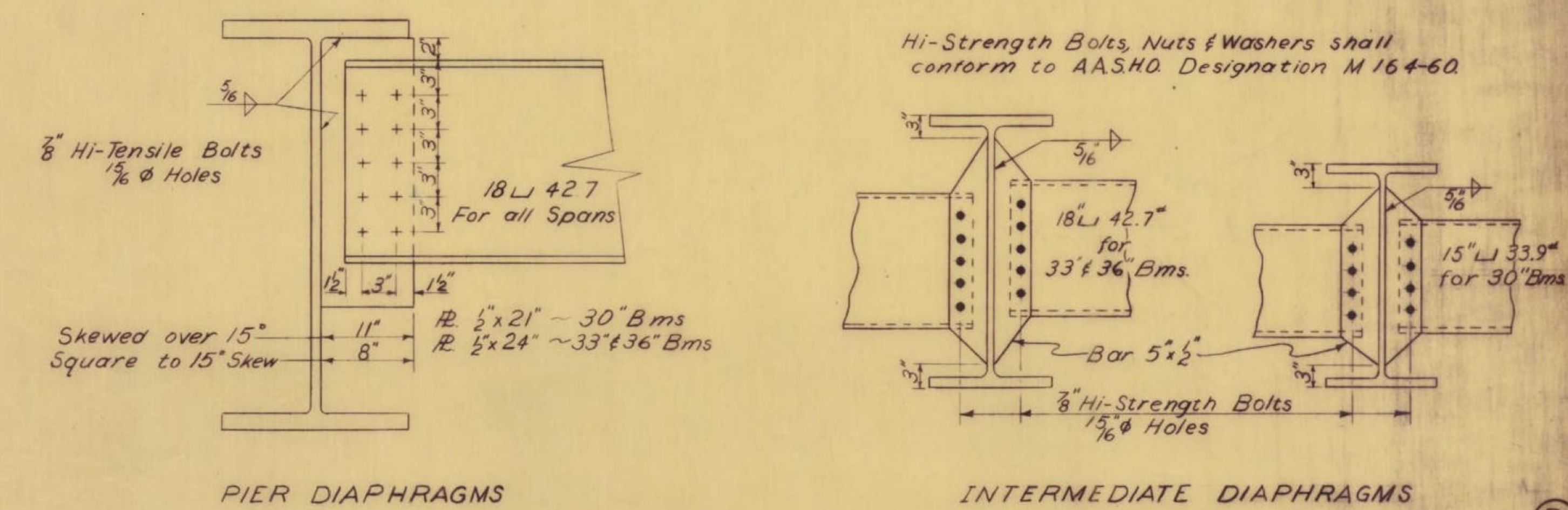
COVER PL. LENGTH	WIDTH	THICKNESS	TAPER	WELD 'A'	WELD 'B'	L 1
67'-5"	14"	1 1/2"	1'-6"	3/8"	1/2"	3'-5"
64'-7"	14"	1 1/2"	1'-6"	3/8"	1/2"	3'-5 1/2"
54'-9"	14"	1 1/2"	1'-6"	3/8"	1/2"	2'-3"
45'-1"	14"	1 1/2"	1'-6"	3/8"	1/2"	---
48'-11"	10"	1 1/2"	1'-0"	3/8"	1/2"	1'-9 1/2"
48'-1"	10"	1 1/2"	1'-0"	3/8"	1/2"	---
41'-3"	10"	1 1/2"	1'-0"	3/8"	1/2"	---
37'-8"	10"	1 1/2"	1'-0"	3/8"	1/2"	---
29'-1"	8"	1 1/2"	1'-0"	3/8"	1/2"	---
27'-1"	8"	1 1/2"	1'-0"	3/8"	1/2"	---



COVER PLATE DETAILS

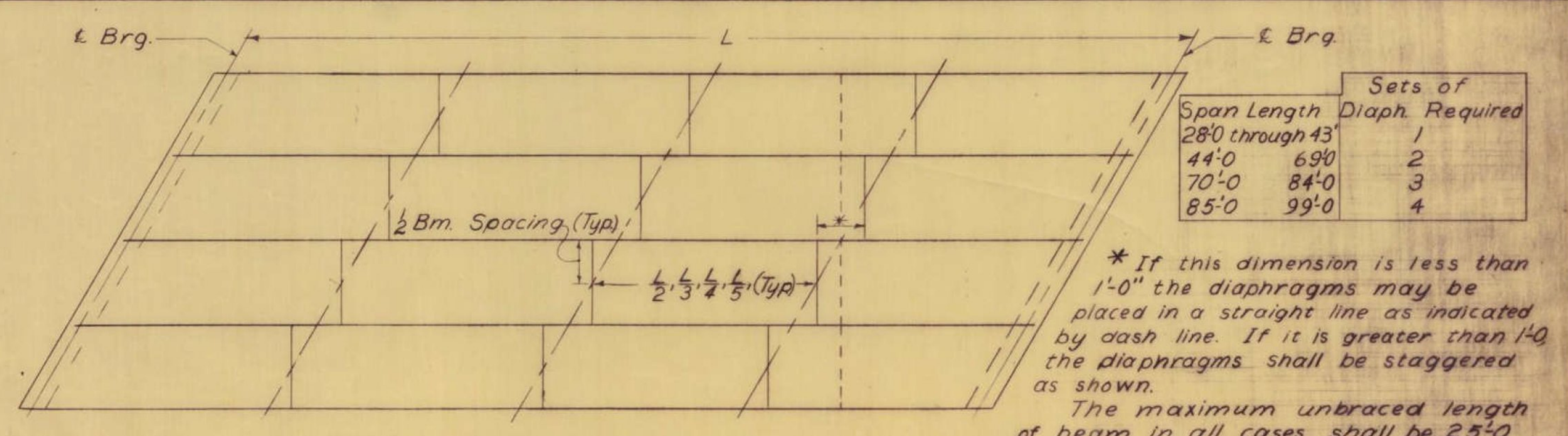


INTERIOR W BEAM CUT-OFFS AT PIER



PIER DIAPHRAGMS

INTERMEDIATE DIAPHRAGMS



DIAPHRAGM LOCATION PLAN

Span Length	Sets of Diaphragms Required
28'-0" through 43'	1
44'-0" 69'-0"	2
70'-0" 84'-0"	3
85'-0" 99'-0"	4

* If this dimension is less than 1'-0" the diaphragms may be placed in a straight line as indicated by dash line. If it is greater than 140 the diaphragms shall be staggered as shown. The maximum unbraced length of beam in all cases shall be 25'-0"

REVISIONS & CORRECTIONS
Added size of Diaphragms on Detail D 6/21/63 M

Drawn By: *M. J. ...* Date: Dec 1, 1962
Traced By: *M. J. ...* Date: Dec 1, 1962
Checked By: *E.E.R.W.M.S. R.S.H.* Date: Dec 1, 1962
Recommended For Approval: *L.M. ...* 12/1/62 Bridge Engineer Date
Recommended For Approval: *R.H. ...* 1/1/63 Assist. Chief Engineer Date
Approved By: *A.D. ...* 1/4/63 Chief Engineer Date

DETAILS OF W F BEAM BRIDGES
STRUCTURAL STEEL DETAILS
A D E DIAPHRAGM DETAILS
B W F BEAM CUT-OFFS
C COVER PLATE DETAILS

VERMONT
DEPARTMENT OF HIGHWAYS
STRUCTURE STANDARDS
SCB-D7-62