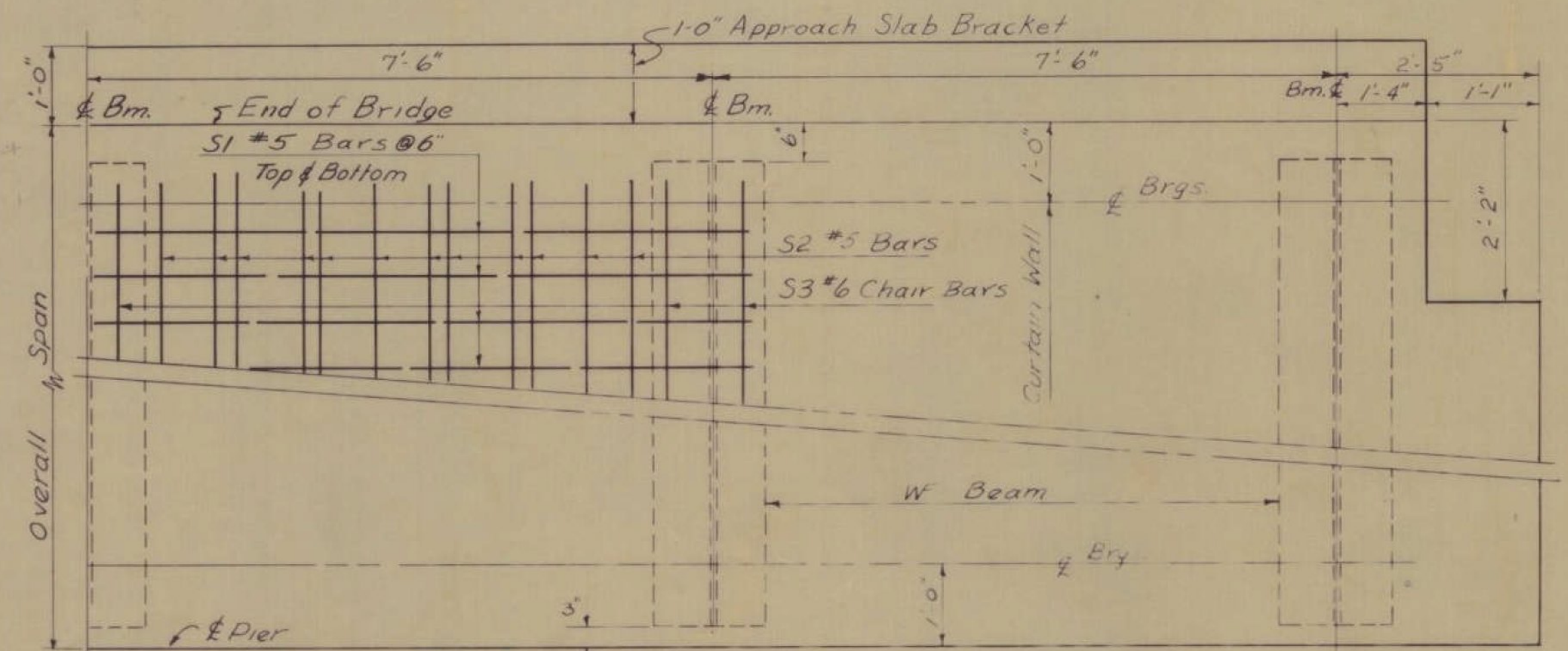
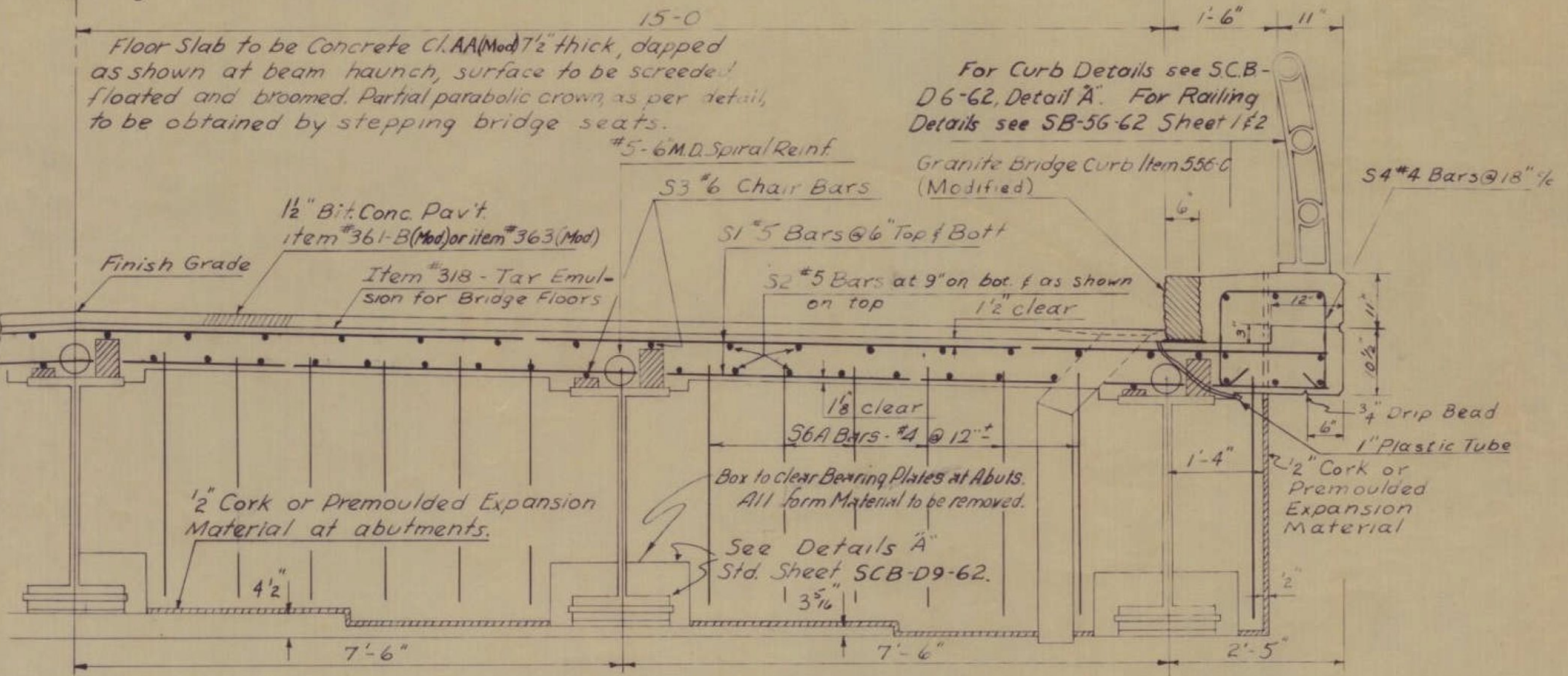


DETAIL OF PARTIAL PARABOLIC CROWN OF SLAB



HALF PLAN



TYPICAL HALF SECTION

Revisions & Corrections

Drawn By: R.S.H. June 1960
 Traced By: R.S.H. June 1960
 Checked By: R.T.B. & R.S.H. July 1960

Recommended For Approval: [Signature] 12/62
 Bridge Engineer Date
 Recommended For Approval: [Signature] 11/63
 Asst. Chief Engineer Date
 Approved By: [Signature] 11/63
 Chief Engineer Date

TYPICAL SECTION, PLAN VIEW, & QUANTITIES
 30 FOOT ROADWAY WF BEAM BRIDGES
 DESIGN LOADING - H-20-S16-44 (A.S.T.M. - A 36-62T STEEL)
 34-44 NON COMPOSITE, 49-99 COMPOSITE
 FOR ADDITIONAL DETAILS SEE STANDARD SCB-D-62

TABLE OF QUANTITIES FOR SINGLE (SQUARE) SPAN

Span, Out to Out	99-0	94-0	89-0	84-0	79-0	74-0	69-0	64-0	59-0	54-0	49-0	44-0	39-0	34-0
Span, E to E Brngs.	97-0	92-0	87-0	82-0	77-0	72-0	67-0	62-0	57-0	52-0	47-0	42-0	37-0	32-0
Length of Bms.	98-0	93-0	88-0	83-0	78-0	73-0	68-0	63-0	58-0	53-0	48-0	43-0	38-0	33-0
Size WF Beam	36WF280	36WF245	36WF230	36WF230	36WF194	36WF170	36WF150	36WF135	36WF135	36WF135	36WF135	36WF135	33WF118	30WF108
Lgth of Size Cover Pl. (Bot. only)	6'-1 1/2"	6'-7 1/2"	5'-9 1/2"	4'-9 1/2"	4'-9 1/2"	4'-9 1/2"	4'-9 1/2"	4'-9 1/2"	4'-9 1/2"	4'-9 1/2"	4'-9 1/2"	4'-9 1/2"	4'-9 1/2"	4'-9 1/2"
Dead Load Deflection	3 1/2"	3 1/8"	2 7/8"	2 1/2"	1 7/8"	1 5/8"	1 1/2"	1 1/8"	1 1/8"	1 1/8"	1 1/8"	1 1/8"	1 1/8"	1 1/8"
Dia. of Spiral Bars	5"	5"	5"	5"	5"	5"	5"	5"	5"	5"	5"	5"	5"	5"
Mean Dia. of Spiral	6"	6"	6"	6"	6"	6"	6"	6"	6"	6"	6"	6"	6"	6"
Spiral Pitch 0'-10" from Brng.	Double @ 5 1/2"	Double @ 5 1/2"	Double @ 5 1/2"	Double @ 5 1/2"	Double @ 5"	Double @ 5"	Double @ 5"	Double @ 5"	Double @ 5"	Double @ 5"	Double @ 5 1/2"	Double @ 5 1/2"	"	"
" " 10'-20" or E Span	Double @ 6 1/2"	Double @ 6 1/2"	Double @ 6 1/2"	Double @ 6 1/2"	Double @ 7"	Double @ 7 1/2"	Double @ 7 1/2"	Double @ 7 1/2"	Double @ 7 1/2"	Double @ 7 1/2"	Double @ 7 1/2"	Double @ 7 1/2"	"	"
" " 20'-30" or E Span	4"	4"	4 1/2"	4 1/2"	4 1/2"	4 1/2"	4 1/2"	5"	5 1/2"	6"	6"	"	"	"
" " 30'-40" or E Span	5"	5"	5"	6"	6"	6"	6"	5"	"	"	"	"	"	"
" " 40'-E Span	6 1/2"	6 1/2"	6"	6"	"	"	"	"	"	"	"	"	"	"
Tot. Struct. Steel (1 span) (lbs.)	169,590	145,670	126,840	112,050	92,150	76,670	62,740	52,610	45,490	41,150	35,830	32,390	24,240	19,280
Reinforcing Bars - S1	376	376	356	336	316	296	276	256	236	216	196	176	156	136
" " - S2	225	225	225	225	225	225	225	150	150	150	150	150	150	75
" " - S3	30	30	30	30	30	30	30	20	20	20	20	20	20	10
" " - S4	132	126	120	112	106	100	92	86	80	72	66	60	52	46
" " - S5	16	16	16	16	16	16	16	16	16	16	16	16	16	16
" " - S6A	52	52	52	52	52	52	52	52	52	52	52	52	52	52
" " - S7	44	44	44	44	44	44	44	44	44	44	44	44	44	44
Tot. Weight - Reinf. Bars (lbs.)	25,300	24,100	22,900	21,700	20,400	19,300	18,000	16,600	15,400	14,200	13,000	11,800	10,600	9,200
Approx. Wt. Spiral Reinf. (lbs.)	2,580	2,550	2,380	2,190	2,160	2,040	1,990	1,860	1,700	1,560	1,440	1,300	1,160	1,000
Tot. Cu Yds. Conc. Class AA (cu yds.)	116	111	106	101	95	90	85	79	73	68	63	58	51	45
Tot. Wt. Bitum. Conc. Pavt. (Med.) (tons)	32	30	29	27	26	24	22	21	19	18	16	15	13	12
Tar Emulsion for Bridge Floors (gals)	132	125	119	112	105	99	92	85	79	72	65	59	52	45
Approx. Quantity 3/4" x 7 Studs	3180	3120	2940	2680	2640	2500	2440	2280	2120	1900	1760	1600	1400	1200
Approx. Quantity 6" x 7 Studs	2,110	2,080	1,960	1,790	1,760	1,670	1,630	1,520	1,410	1,270	1,170	1,060	920	780

REINFORCING STEEL SCHEDULE

Span	S1 - #5 34'-4" Straight	S2 - #5 33'-6" Straight	S3 - #6 20'-6" Straight	S4 - #4 20'-6" Straight	S5 - #5 32'-2" Straight	S6A - #4 20'-6" Straight	S7 - #6 20'-6" Straight	S8P - #5 20'-6" Straight
34	33'-6"	33'-6"	2'-6"	6'-6"	6'-6"	6'-6"	6'-6"	6'-6"
39	20'-3"	20'-6"	2'-9"	7'-0"	7'-0"	7'-0"	7'-0"	7'-0"
44	22'-9"	23'-0"	3'-0"	7'-6"	7'-6"	7'-6"	7'-6"	7'-6"
49	25'-3"	25'-6"	3'-0"	7'-6"	7'-6"	7'-6"	7'-6"	7'-6"
54	27'-9"	28'-0"	3'-0"	7'-6"	7'-6"	7'-6"	7'-6"	7'-6"
59	30'-3"	30'-6"	3'-0"	7'-6"	7'-6"	7'-6"	7'-6"	7'-6"
64	32'-9"	33'-0"	3'-0"	7'-6"	7'-6"	7'-6"	7'-6"	7'-6"
69	24'-3"	24'-6"	3'-2"	7'-10"	7'-10"	7'-10"	7'-10"	7'-10"
74	26'-0"	26'-3"	3'-2"	7'-10"	7'-10"	7'-10"	7'-10"	7'-10"
79	27'-6"	28'-0"	3'-3"	8'-0"	8'-0"	8'-0"	8'-0"	8'-0"
84	29'-3"	29'-6"	3'-3"	8'-0"	8'-0"	8'-0"	8'-0"	8'-0"
89	31'-0"	31'-3"	3'-3"	8'-0"	8'-0"	8'-0"	8'-0"	8'-0"
94	32'-6"	33'-0"	3'-4"	8'-2"	8'-2"	8'-2"	8'-2"	8'-2"
99	34'-3"	34'-6"	3'-4"	8'-2"	8'-2"	8'-2"	8'-2"	8'-2"

DEPARTMENT OF HIGHWAYS
 STANDARD STRUCTURES
SCB-30-62