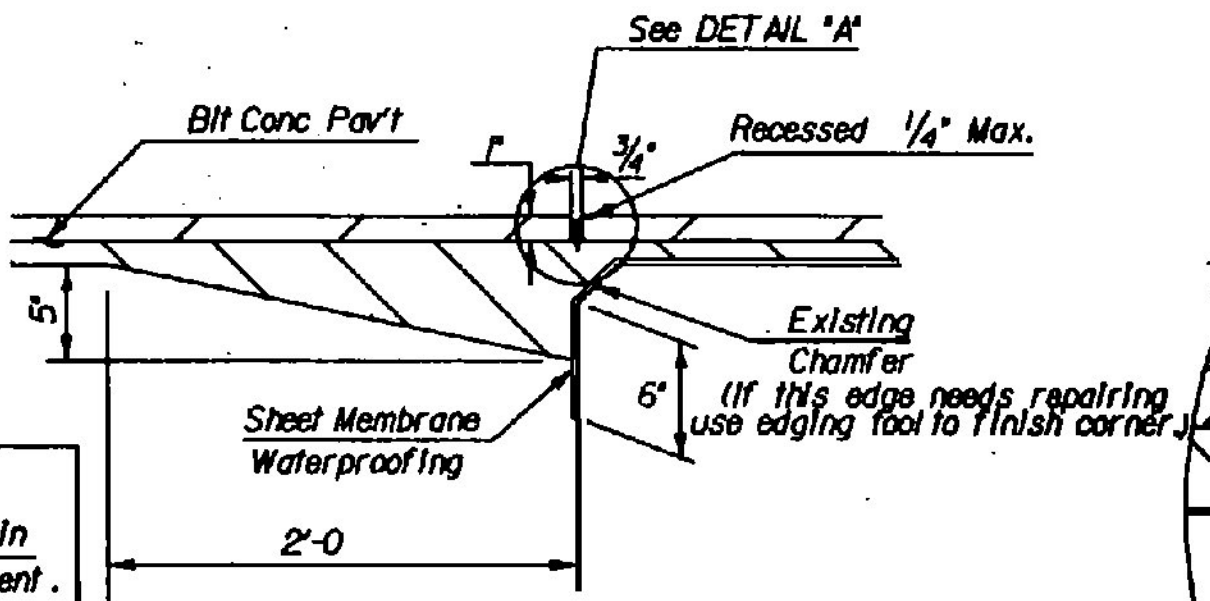


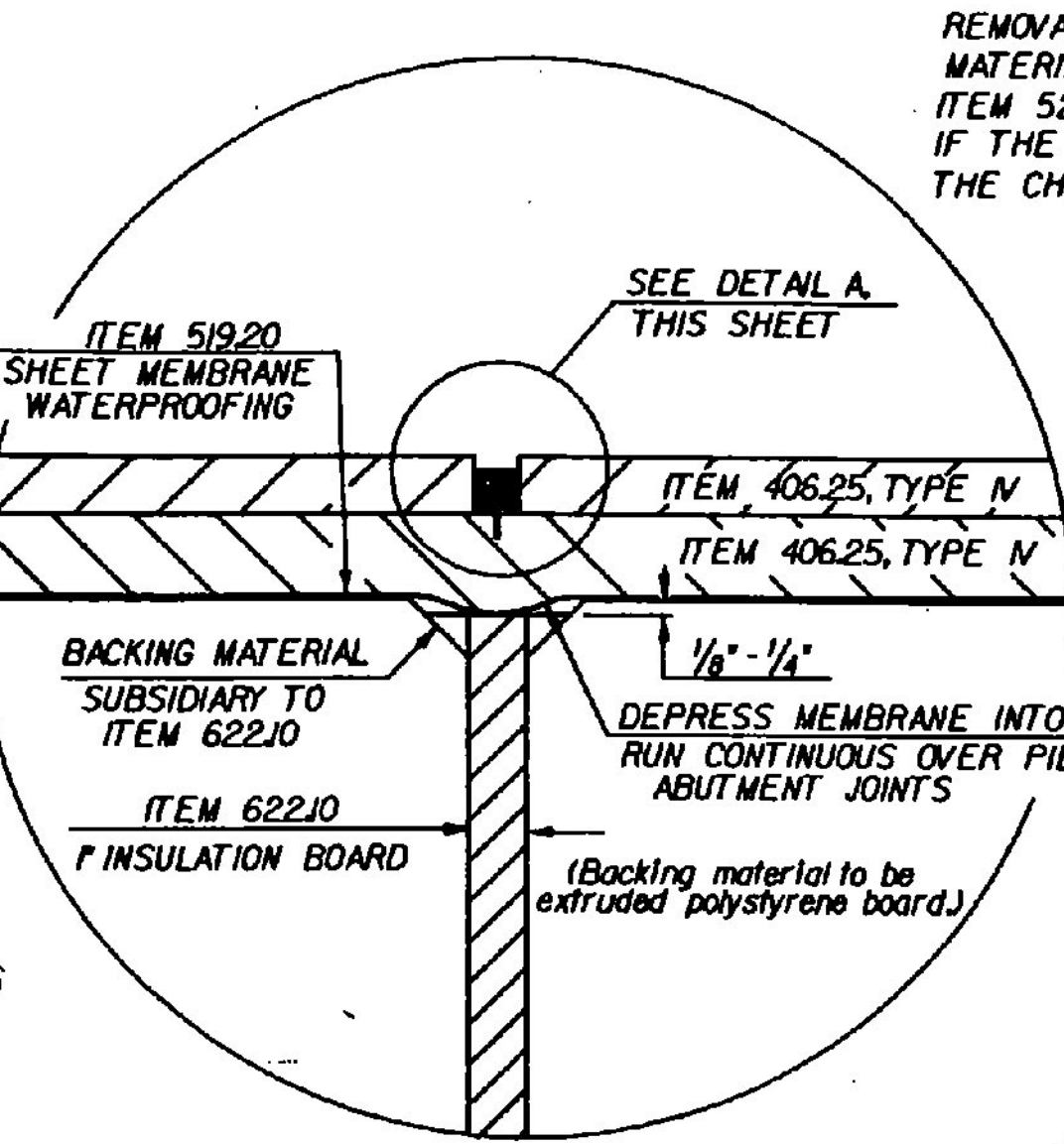
DETAIL A
Scale 1" = 1'

Note: Clean sawing dust and other foreign material from the sawed joint before applying the Hot Poured Joint Sealer. See VT.SPEC. 524.05 ①



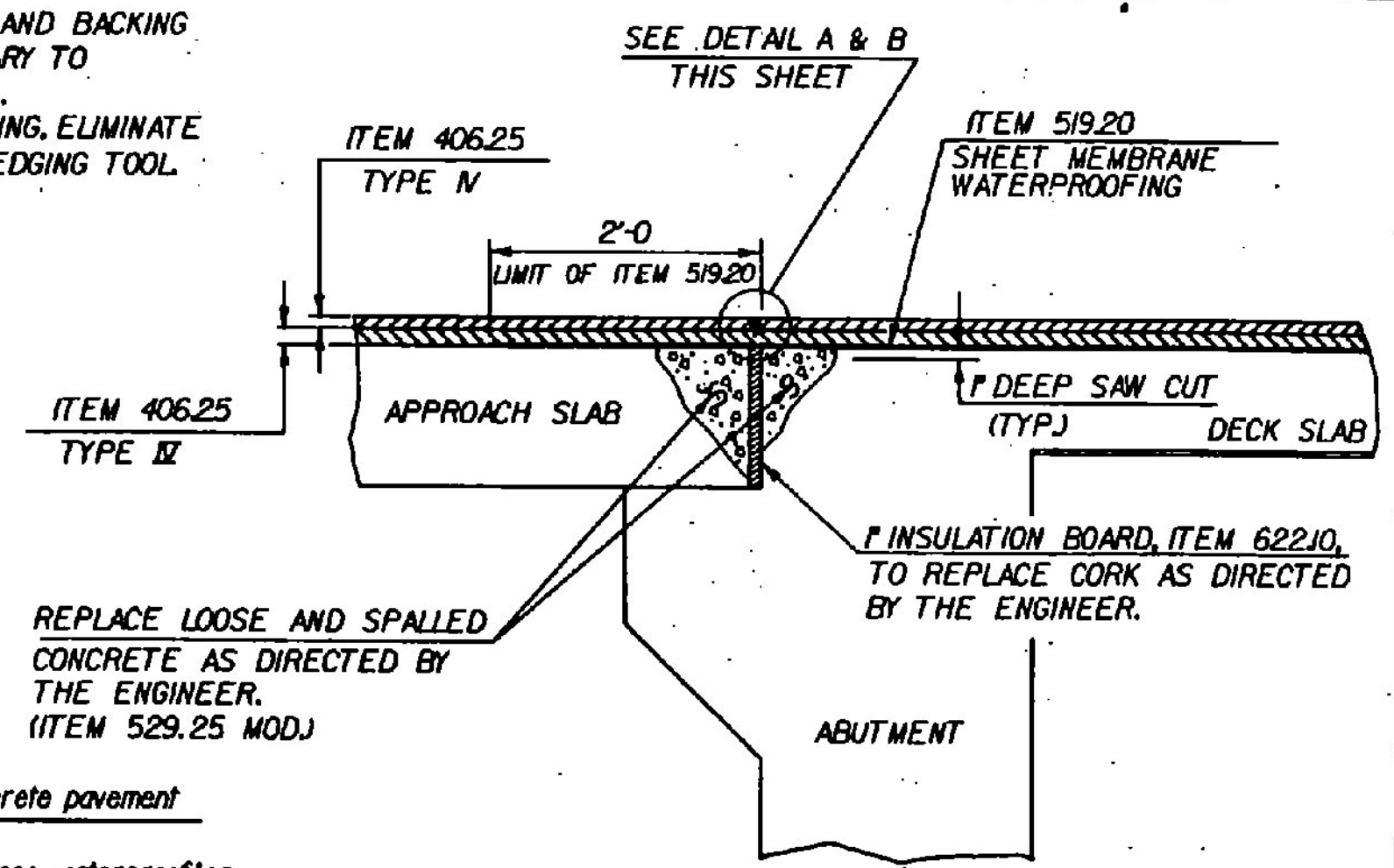
JOINT SEALER DETAIL WITHOUT SURFACE APPROACH SLAB
Scale 1/2" = 1'-0"

MEMBRANE WILL BE DEPRESSED INTO DECK JOINTS AND RUN CONTINUOUS OVER PIER AND ABUTMENT JOINTS. ON BRIDGES WITH APPROACH SLABS, THE MEMBRANE WILL EXTEND TWO (2) FEET ONTO THE SLAB FROM THE END OF THE BRIDGE.



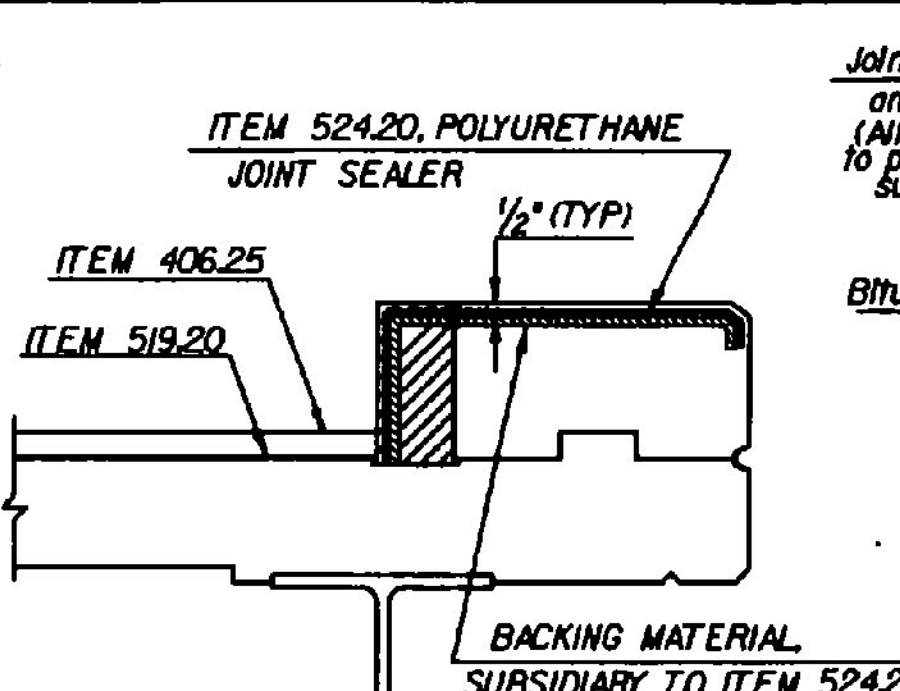
DETAIL B
NTS

REMOVAL OF EXISTING JOINT AND BACKING MATERIAL SHALL BE SUBSIDIARY TO ITEM 524.15 OR ITEM 622.10. IF THE JOINT NEEDS REPAIRING, ELIMINATE THE CHAMFER BY USING AN EDGING TOOL.

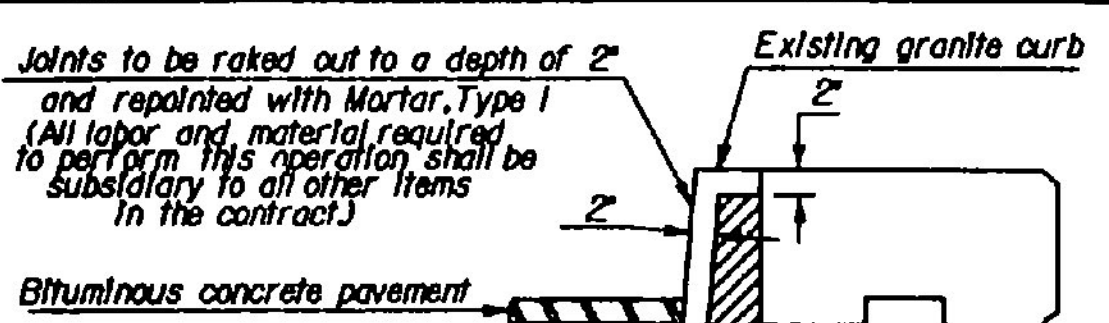


TYPICAL ABUTMENT JOINT DETAIL WITH SURFACE APPROACH SLAB
NTS

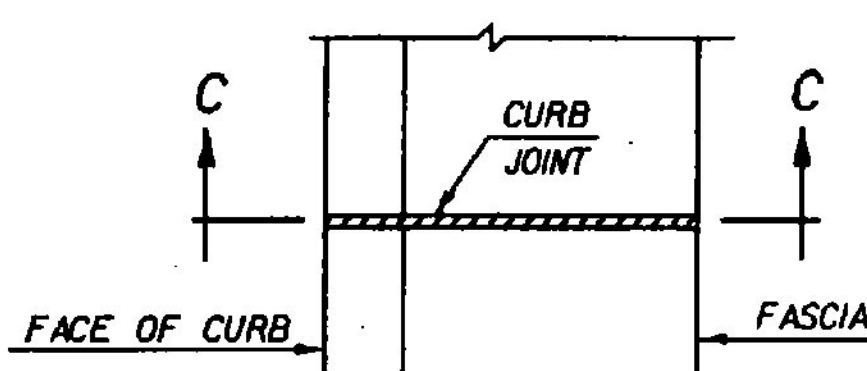
REPLACE LOOSE AND SPALLED CONCRETE AS DIRECTED BY THE ENGINEER. (ITEM 529.25 MOD.)



SECTION C - C

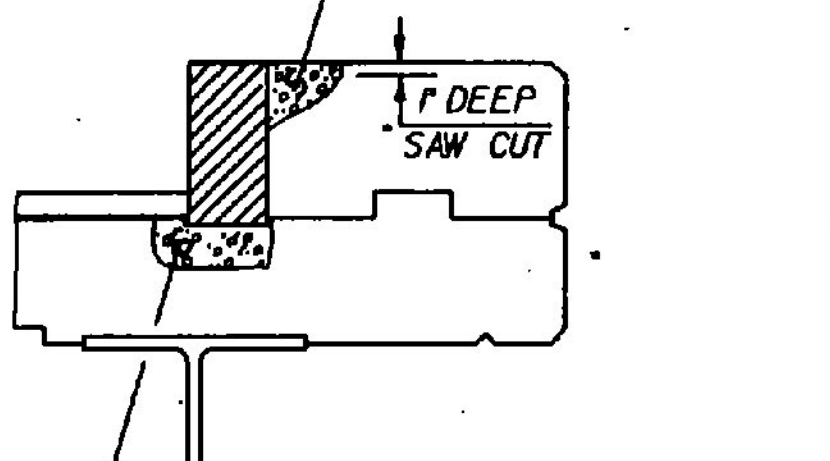


REPLACE LOOSE AND SPALLED CONCRETE AS DIRECTED BY THE ENGINEER, USING ITEM 529.25 MOD.

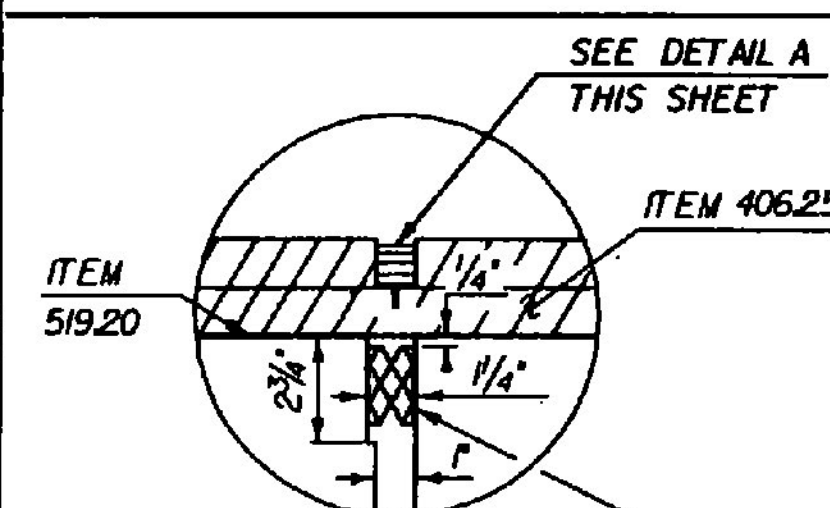


PLAN VIEW

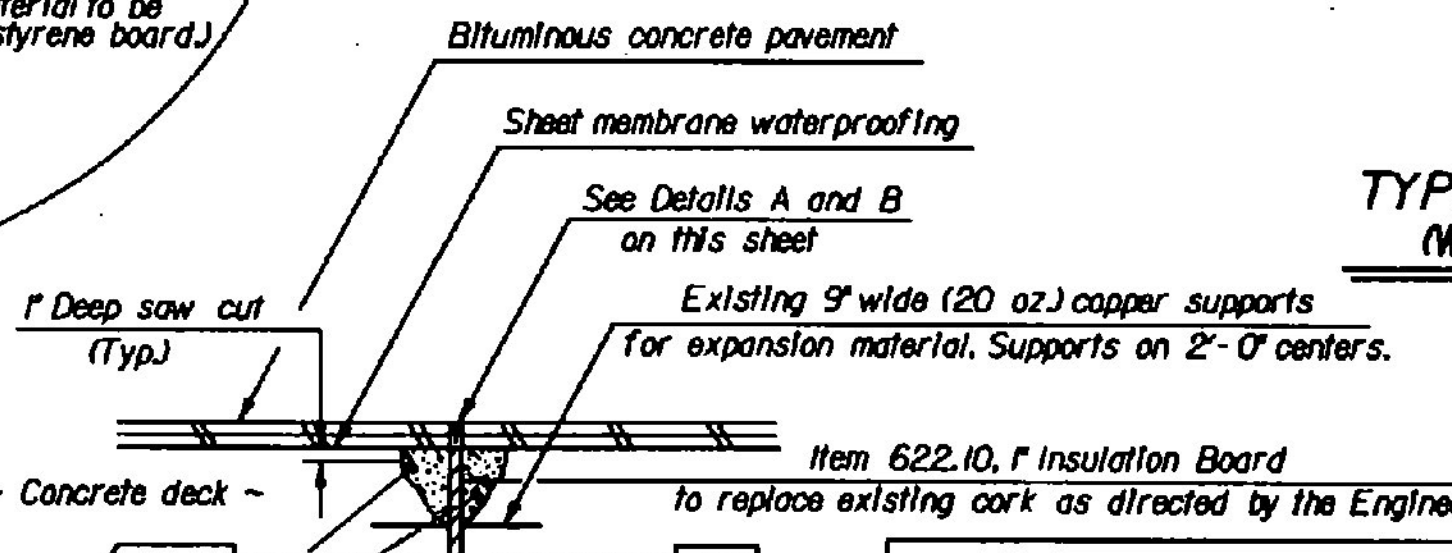
CURB JOINT DETAIL
NTS



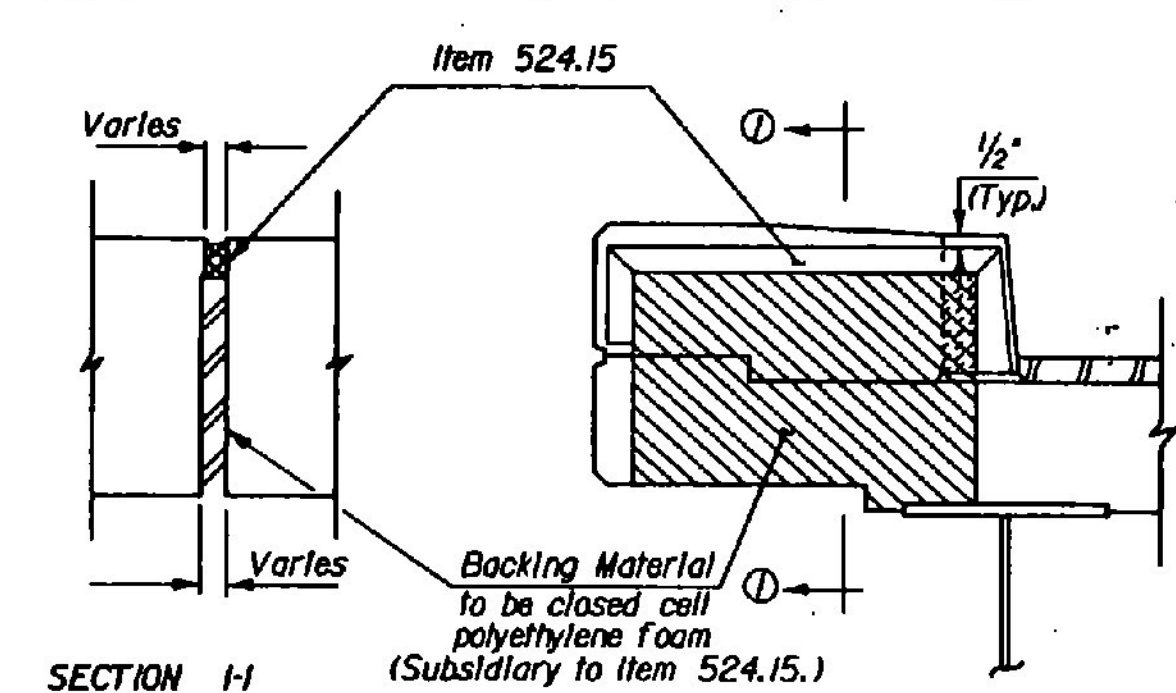
REPLACE LOOSE AND SPALLED CONCRETE OR MORTAR AS DIRECTED BY THE ENGINEER, USING ITEM 501.45 MOD.



TYPICAL PIER JOINT DETAIL
NTS



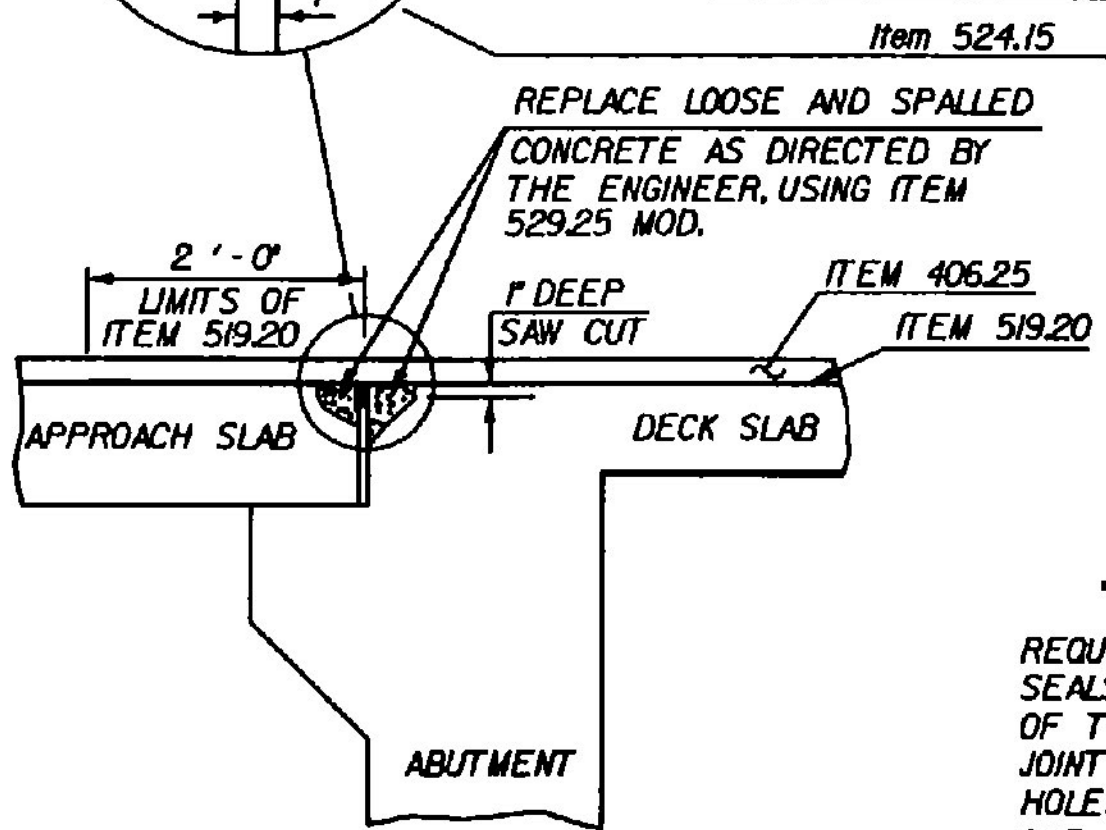
REPLACE LOOSE AND SPALLED CONCRETE AS DIRECTED BY THE ENGINEER, USING ITEM 529.25 MOD.



SECTION H - H

Any existing Joint Sealer, Performed Neoprene, If removed, shall not be reused but shall be replaced with new material.

CURB JOINT DETAIL A
NTS



COMPRESSION SEAL DETAILS
NTS

ADHESIVE SPECIFICATION

REQUIRED ADHESIVE FOR STRUCTURAL JOINT SEALS SERVES AS A LUBRICANT FOR INSERTION OF THE COMPRESSION SEALS IN STEEL AND CONCRETE JOINTS; PRIMES THE JOINT FACES; SEALS SMALL HOLES AND IMPERFECTIONS IN CONCRETE WALLS. ONE PART MOISTURE CURING POLYURETHANE AND AROMATIC HYDROCARBON SOLVENT MIXTURE. SOLID CONTENT 72% ± 3% BY WEIGHT. APPROXIMATE WEIGHT 8 1/2 ± POUNDS PER GALLON. COLOR, CONCRETE GRAY. ④

STATE OF VERMONT AGENCY OF TRANSPORTATION	
Town Of LUDLOW - MT. HOLLY	Bridge No. _____
Highway No. VT. 100 & VT. 103	Log Sta. _____
DECK REHABILITATION	
TYPICAL DETAILS	
Designed By G.S. ROGERS	Drawn By G. Schalley/D. Newton
Checked By G.S. ROGERS	Bridge Design Supervisor
Date 6/87	Date _____
PROJECT LUDLOW - MT. HOLLY	PROJECT NO. F-DECK (22)S
L&C info. OSAL130.33/DECKREHAB	Sheet 13 of 40