

GPS CONTROL POINTS

"ESSEX"  
 NORTH = 736098.28  
 EAST = 1495748.41  
 ELEV. = 620.40

TO REACH FROM THE INTERSECTION OF VT ROUTES 128 NORTH AND 15 IN ESSEX CENTER GO EAST ALONG VT ROUTE 128 NORTH FOR 0.1 MI (0.2 KM) TO THE INTERSECTION OF BIXBY HILL ROAD AT A CROSSROADS. TURN LEFT AND GO NORTH-NORTHEAST ALONG BIXBY HILL ROAD FOR 0.45 MI (0.72KM) TO THE CREST OF A HILL AND THE MARK ON THE LEFT, ABOUT 74 M (242.8FT) NORTHWEST OF AND ACROSS THE ROAD FROM THE NORTHWEST CORNER OF THE 2 STORY HOUSE OF MAGNANT. THE MARK IS A U.S. CORPS OF ENGINEERS ARMY MAP SERVICE DISK SET IN THE NORTH END OF A MASSIVE ROCK OUTCROP. IT IS 35.3 M (115.8 FT) WEST OF AND ABOUT 10 M (32.8 FT) HIGHER THAN THE CENTERLINE OF BIXBY HILL ROAD, 19.7 M (64.6 FT) EAST OF THE SOUTHEAST CORNER OF A CHAIN LINK FENCE SURROUNDING A MUNICIPAL WATER TANK, 12.0M (39.4 FT) WEST OF THE WEST FACE OF A LARGE PIECE OF DETACHED LEDGE WHICH PROJECTS ABOUT 2 M, (6.6 FT) AND 6.6 M (21.7 FT) SOUTHWEST OF A FIBERGLASS WITNESS POST.

"EVANS"  
 NORTH = 733124.962  
 EAST = 1486286.307  
 ELEV. = 482.278

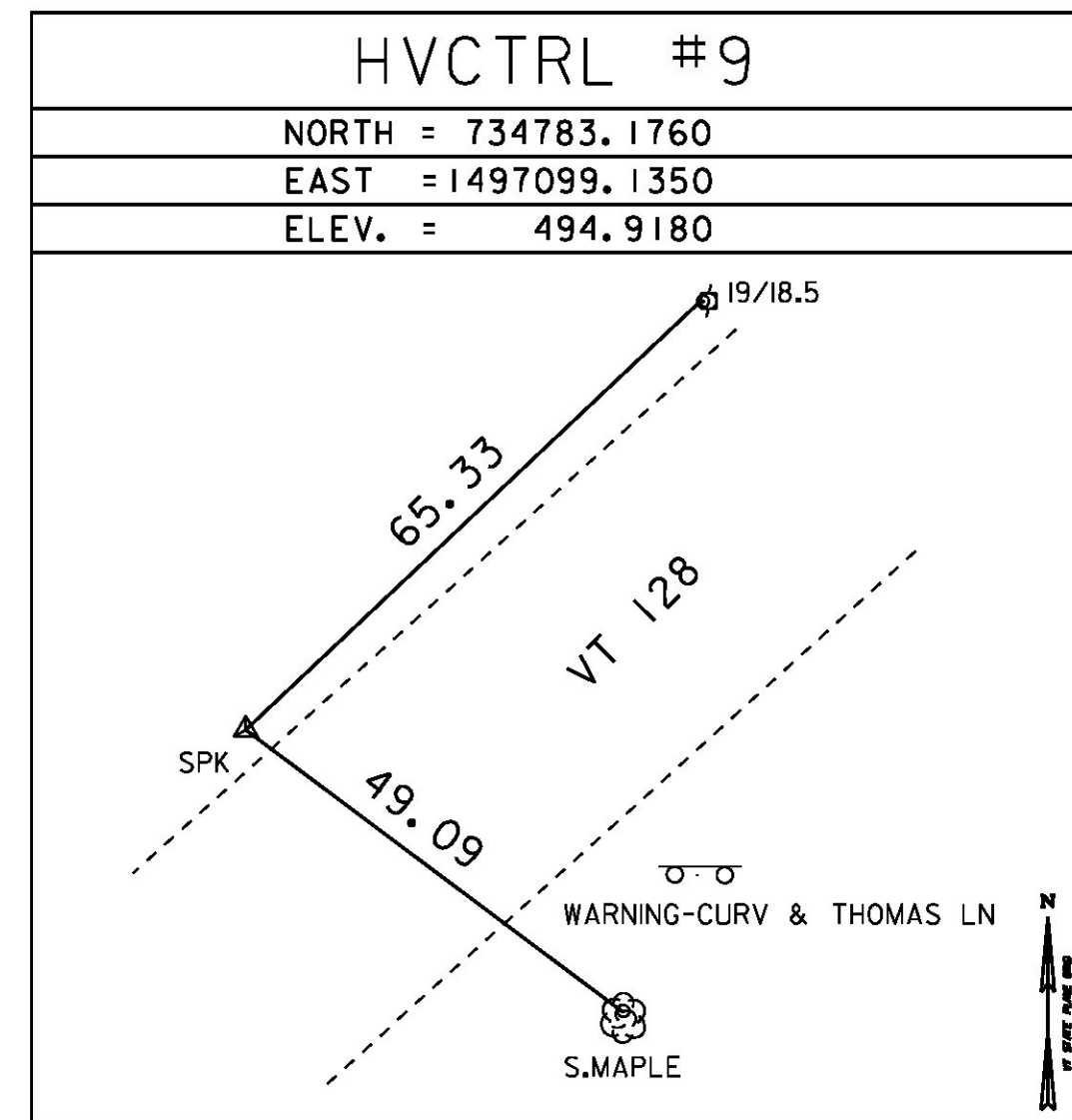
TO REACH FROM THE VT ROUTE 15 BRIDGE OVER VT ROUTE 289, GO NORTHWEST ALONG VT ROUTE 289 FOR 0.2 MI (0.3 KM) TO THE INTERSECTION OF VT ROUTE 289 AND THE NORTHWEST END OF THE NORTHBOUND ON-RAMP AND PARK VEHICLE. WALK NORTHEAST UP THE EMBANKMENT TO THE SITE OF THE MARK JUST BEYOND THE RIGHT-OF-WAY FENCE. THE MARK IS SET ON THE EDGE OF A FIELD 10 CM (4 INCHES) BELOW GROUND SURFACE IN THE TOP OF A ROCK OUTCROP. IT IS 56.0 M (183.7 FT) NORTHEAST OF AND ABOUT 7 M (23.0 FT) HIGHER THAN THE CENTERLINE OF VT ROUTE 289, 8.4 M (27.6 FT) WEST OF A 25 CM (10 INCH) CHERRY AT THE CORNER OF A BRUSH LINE, 18.7 M (61.4 FT) NORTHWEST OF A 4 CM (2 INCH) SPRUCE AND 1.2 M (3.9 FT) NORTHEAST OF A FIBERGLASS WITNESS POST AND THE RIGHT-OF-WAY FENCE.

"RONALD PERRY"  
 NORTH = 759471.920  
 EAST = 1505360.836  
 ELEV. = 411.724

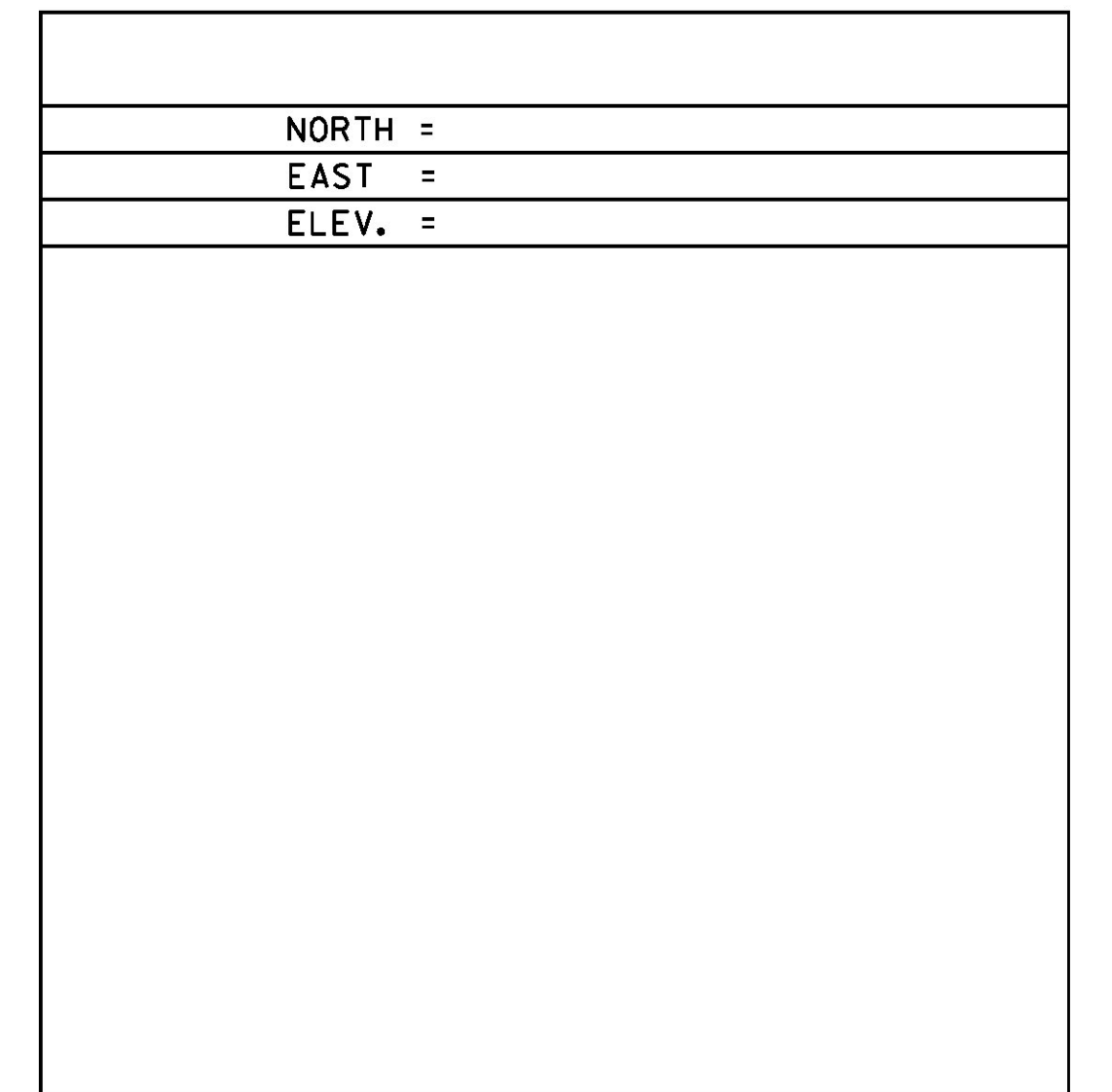
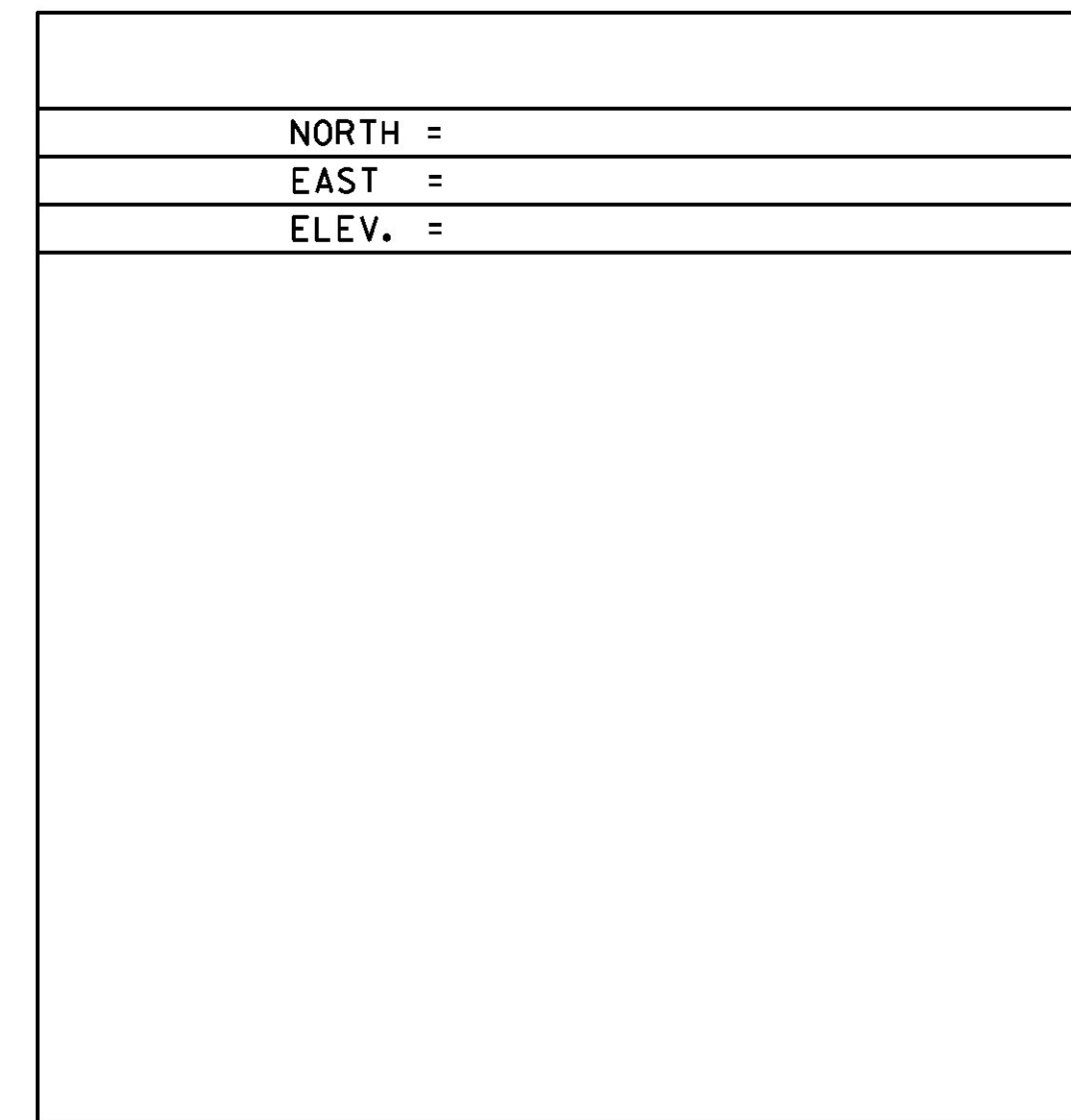
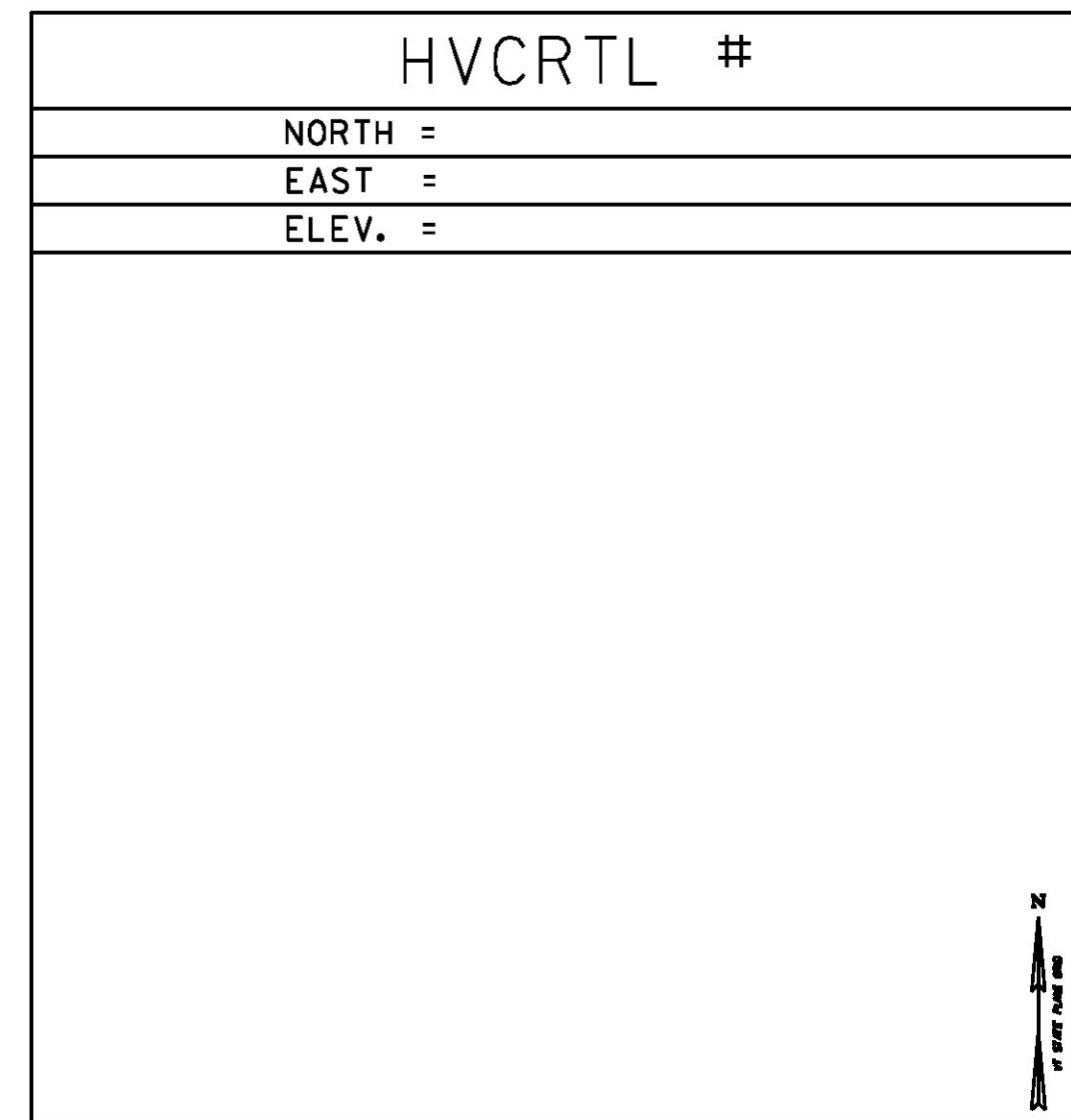
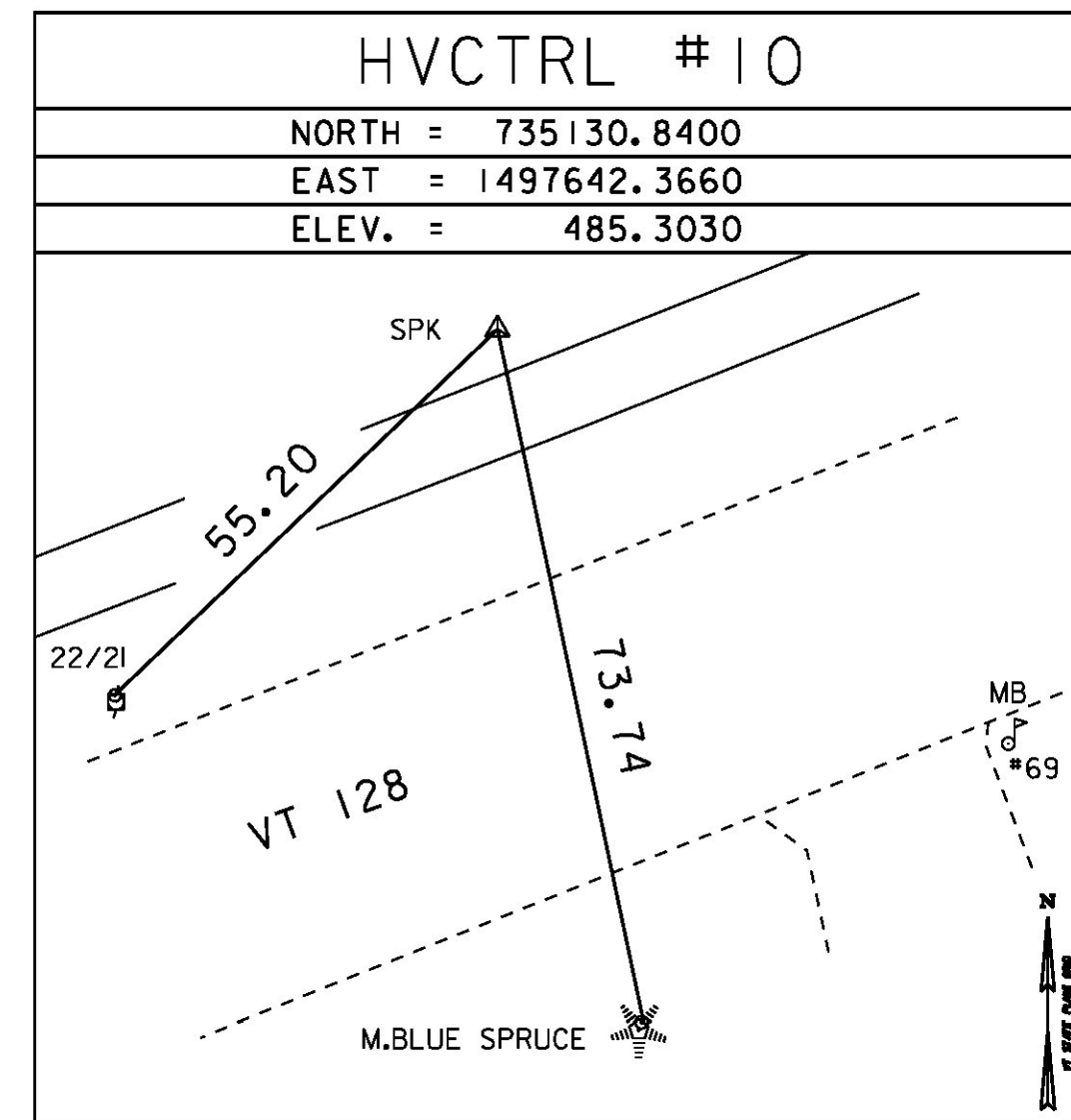
GENERAL LOCATION, WESTFORD, VT. OWNERSHIP, RONALD PERRY, 1292 VT ROUTE 128, WESTFORD VT 05494. THE MARK IS SET FLUSH WITH THE GROUND SURFACE IN THE TOP OF A 3.0 M X 0.4 M ROCK OUTCROP. IT IS 90.4 M NW OF AND ABOUT 2 M LOWER THAN THE CENTERLINE OF VT ROUTE 128, 81.3 M ESE OF A 70 CM WHITE PINE, 20.2 M SW OF THE PEAK OF A 10.5 M X 4.0 M ROCK OUTCROP WHICH PROJECTS ABOUT 1.0 M ABOVE GROUND SURFACE, 103.6 M SW OF THE CENTERLINE OF THE FIELD DRIVE AND 61.9 M NORTH OF A 45 CM MAPLE AND A FWP.

\*GPS CONTROL TAKEN FROM ESSEX-WESTFORD STP 2912 (I) [10C226]

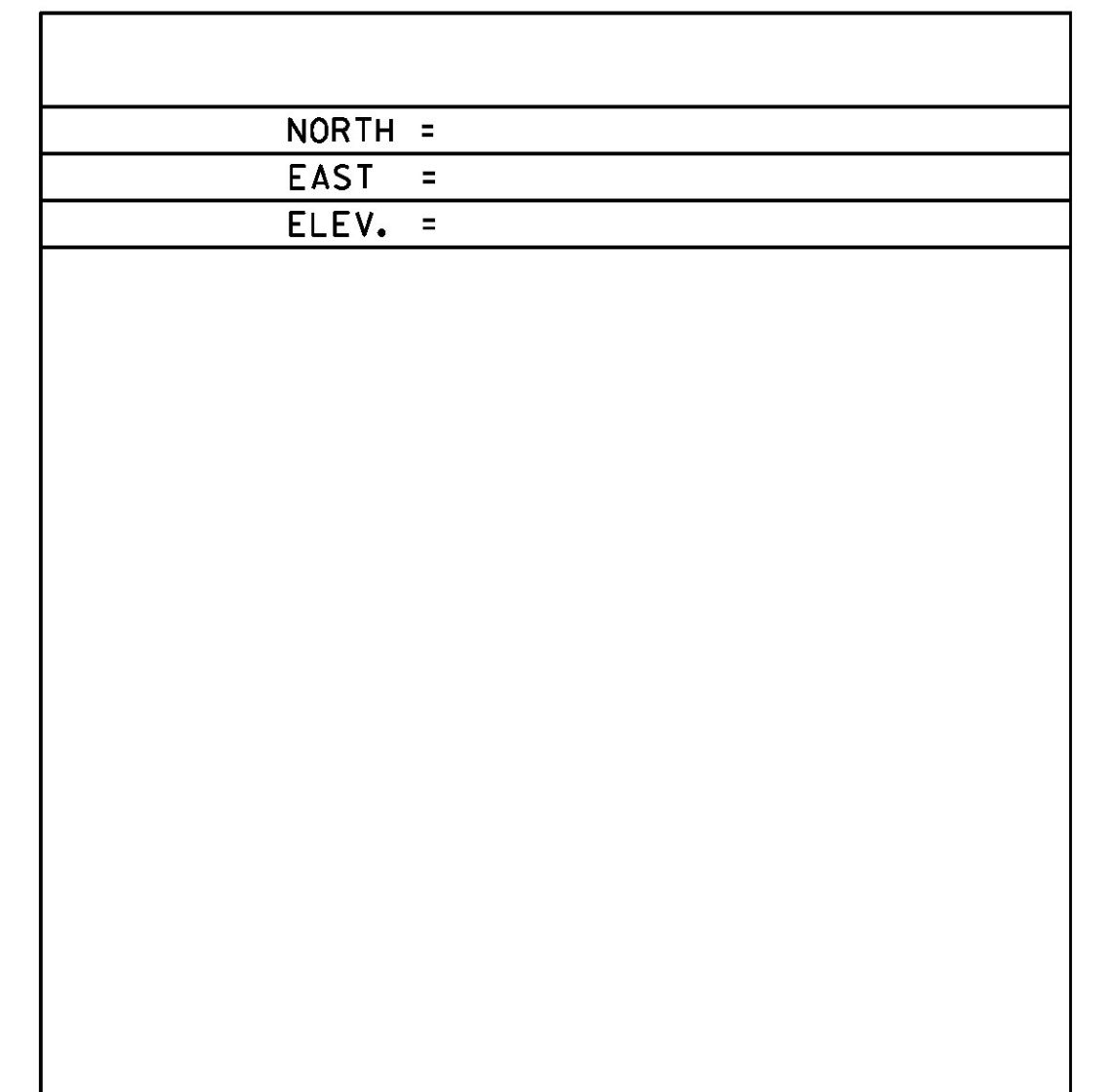
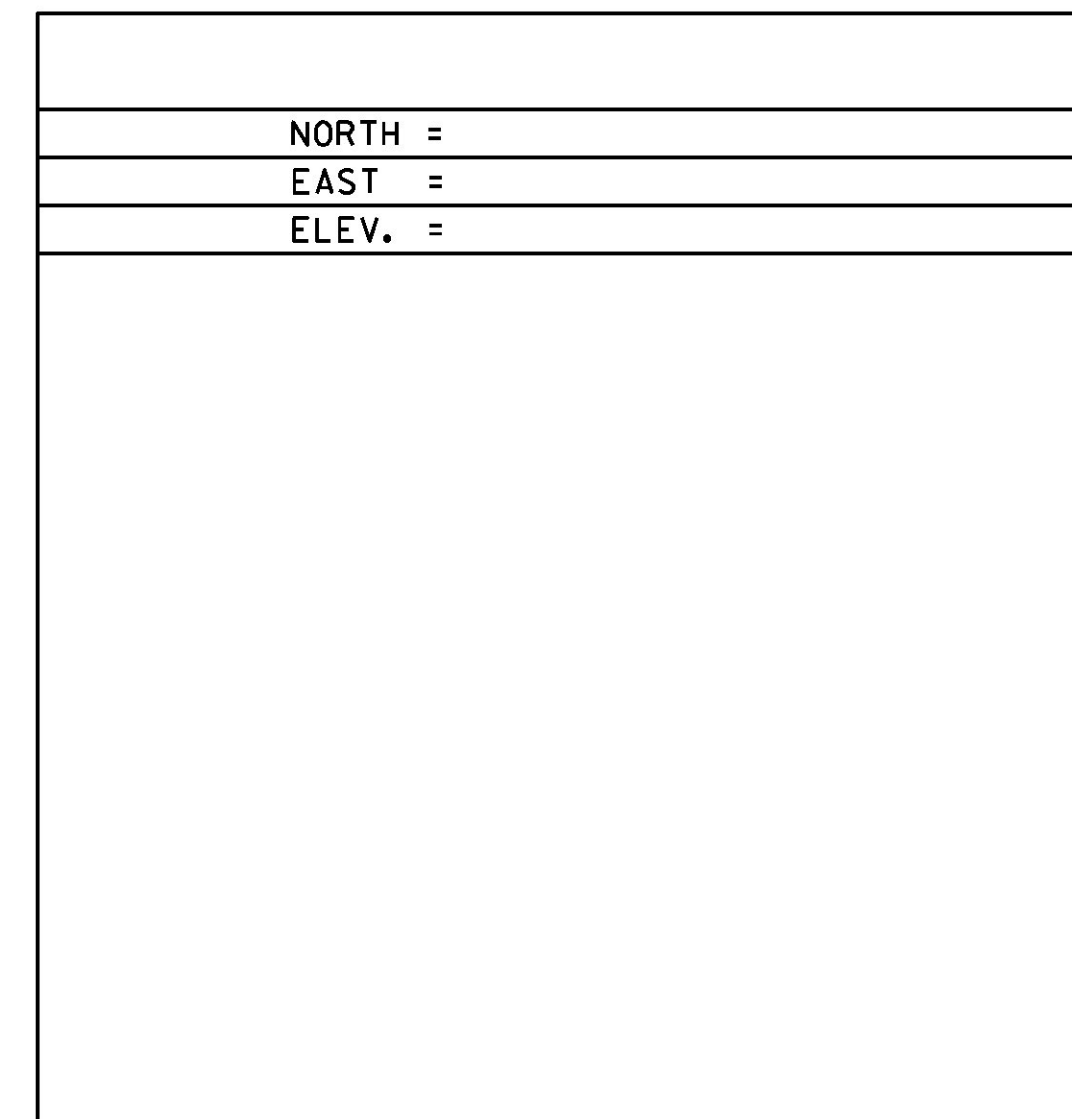
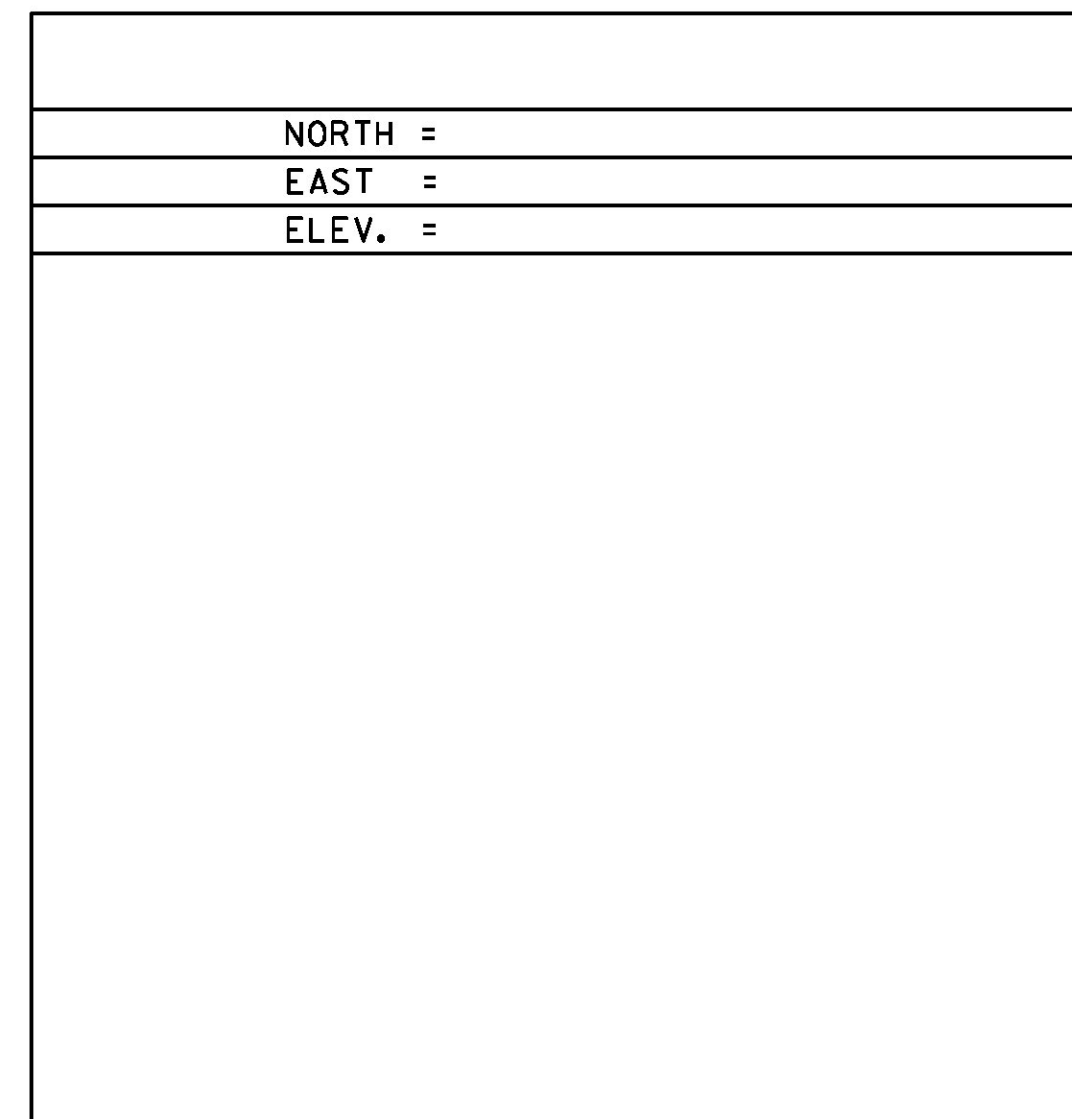
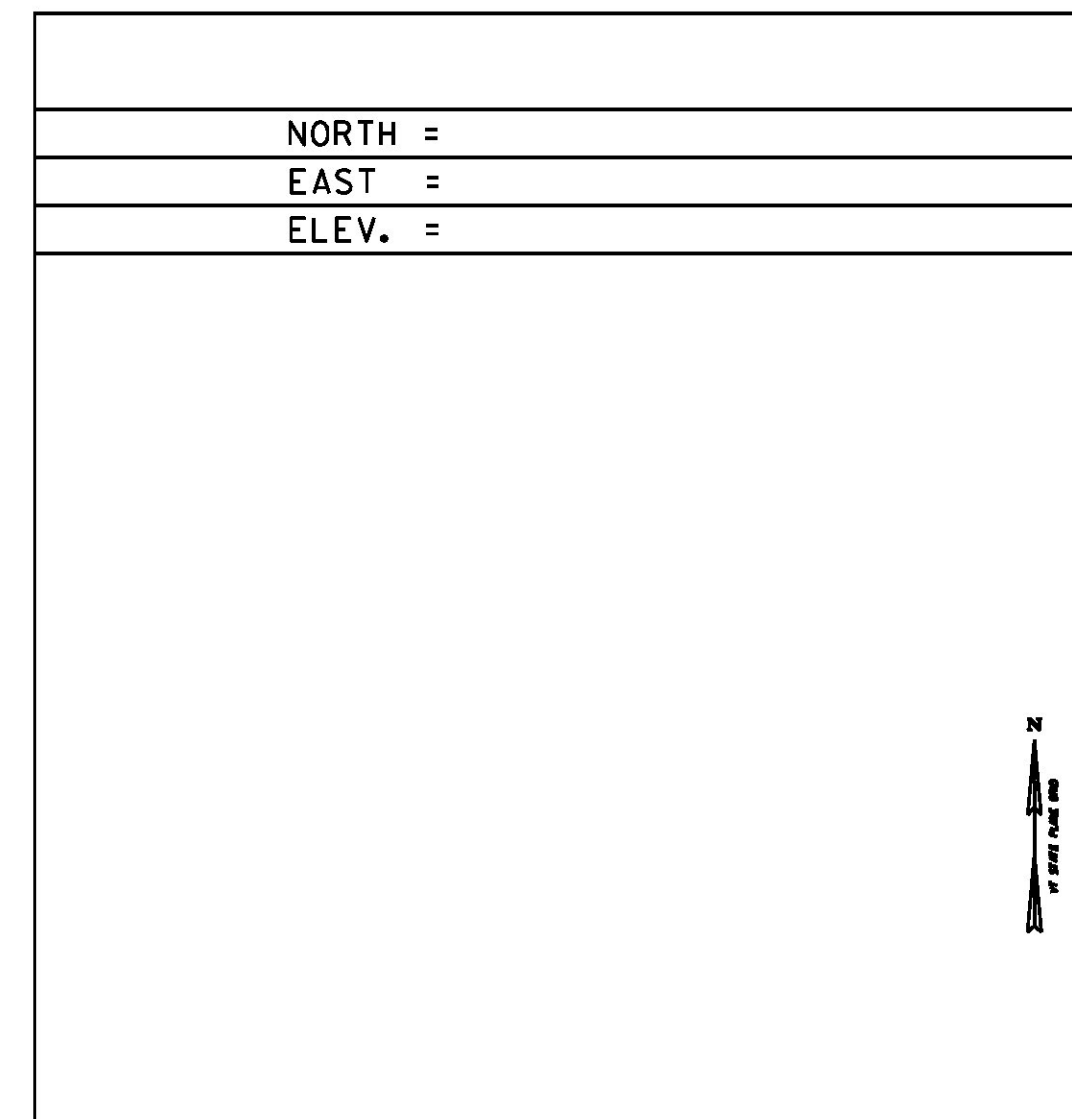
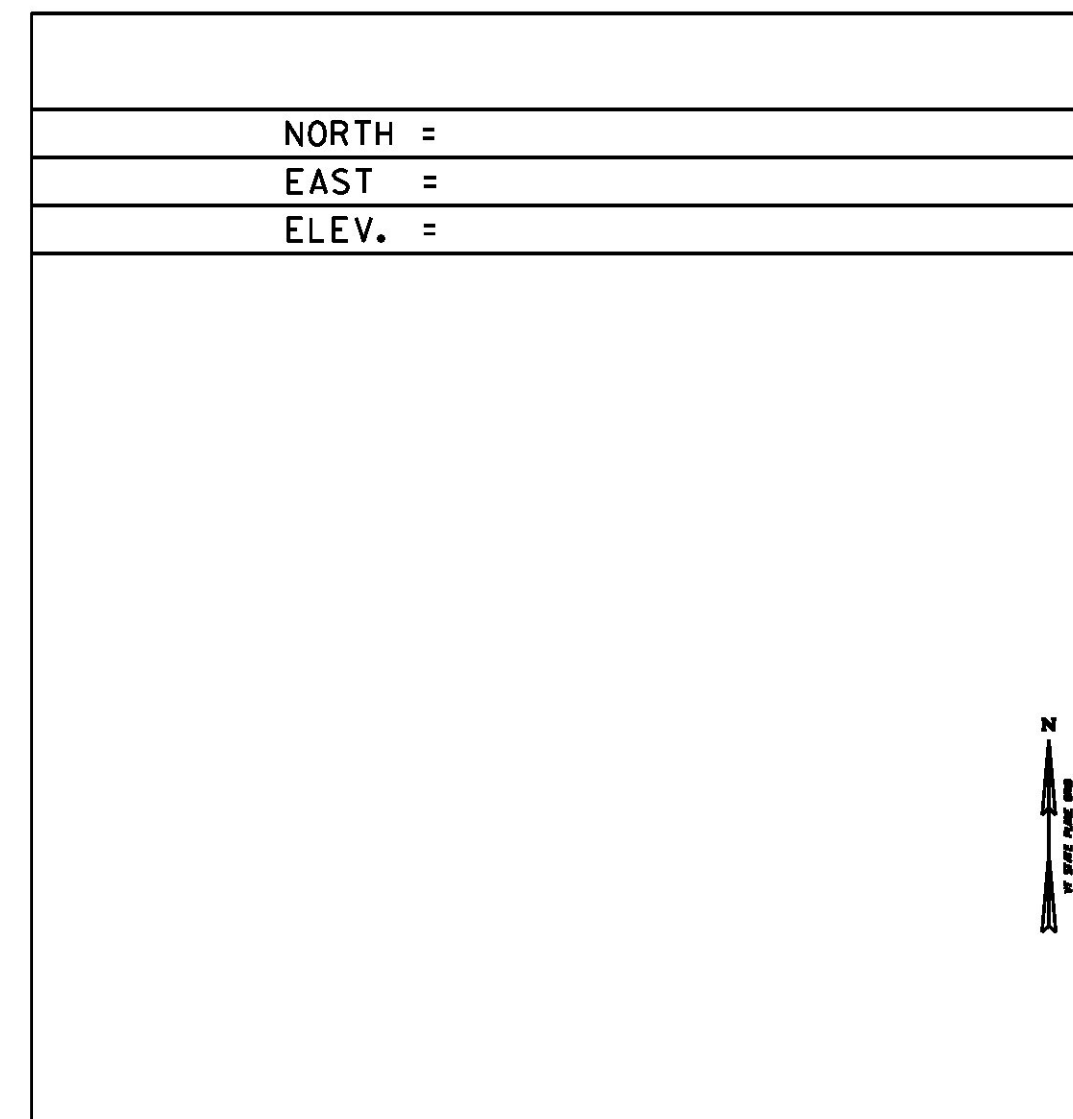
TRAVERSE TIES



\*TRAVERSE COMPLETED BY VSE



ALIGNMENT TIES



DATUM  
 VERTICAL NAVD 88  
 HORIZONTAL NAD 83  
 ADJUSTMENT N/A

PROJECT NAME: ESSEX	
PROJECT NUMBER: STP 2912(2)	
FILE NAME: X14V256T1.DGN	PLOT DATE: 08-JUN-2015
PROJECT LEADER: M. FOWLER	DRAWN BY: G. HITCHCOCK
DESIGNED BY: VTRANS	CHECKED BY: P. BEYOR
TIE SHEET	SHEET 3 OF 17