

MILLED RUMBLE STRIPS
STA. A 576+50 - STA. A 582+25 CTR

STEEL BEAM GUARDRAIL, GALVANIZED
STA. A 576+94 - STA. A 579+22.5 RT
STA. A 577+24 - STA. A 577+61.5 LT

ANCHOR FOR STEEL BEAM GUARDRAIL
AS SHOWN - 3
(SEE STD G1-D) **A 576+94 RT**
A 577+22.5 RT
A 577+24 LT

REMOVE AND RESET GUARDRAIL
STA. A 577+61.5 - STA. A 582+25 LT

REPLACE GUARDRAIL POST ASSEMBLY
SEE ITEM DETAIL SHEETS

REPLACE GUARDRAIL BEAM UNIT
SEE ITEM DETAIL SHEETS

REMOVAL AND DISPOSAL OF GUARDRAIL
STA. A 577+24 - STA. A 577+61.5 LT
STA. A 577+86 - STA. A 578+60 RT

DURABLE 4 INCH WHITE LINE, (SEE OPTION ITEMS) &
TEMPORARY 4 INCH WHITE LINE, PAINT

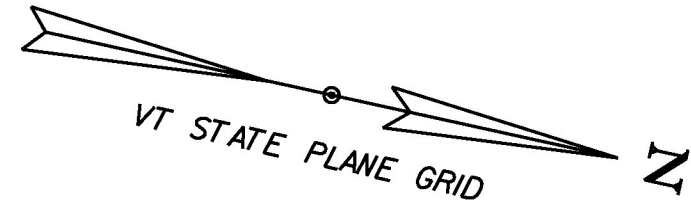
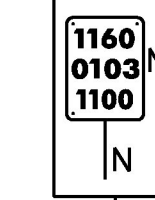
(ALL LINES WILL INCLUDE EDGE LINE BREAKS AND
RADII FOR SIDE ROADS)
STA. A 576+50 - STA. A 582+25 (SOLID LT & RT)

DURABLE 4 INCH YELLOW LINE, (SEE OPTION ITEMS) &
TEMPORARY 4 INCH YELLOW LINE, PAINT

(ALL LINES WILL INCLUDE CENTERLINE BREAKS FOR SIDE ROADS)
STA. A 576+50 - STA. A 579+80 (SOLID LT & RT)
STA. A 579+80 - STA. A 582+25 (SOLID LT, DASHED RT)

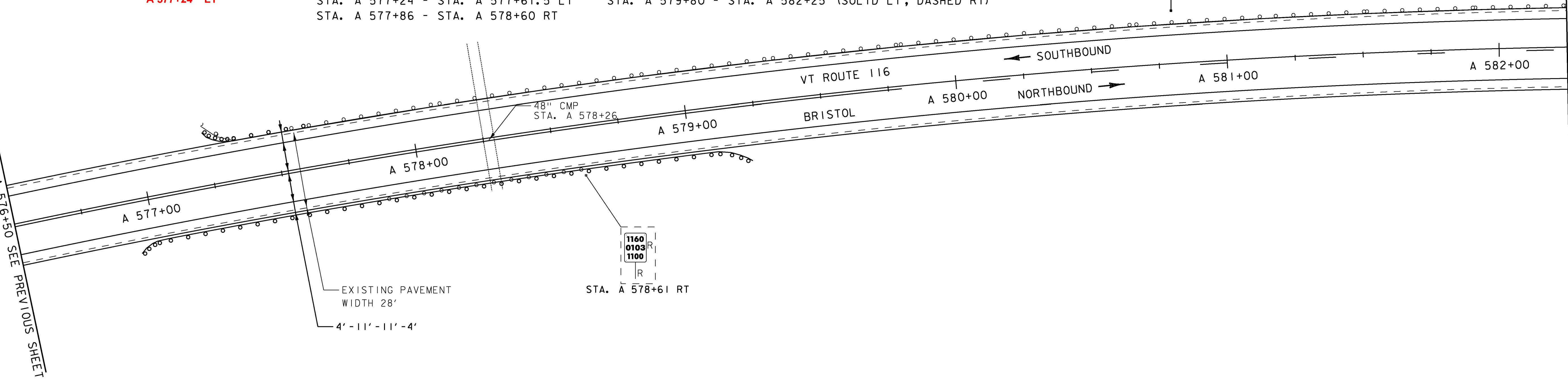
REMOVING SIGNS
AS SHOWN - 1

STA. A 580+80 LT



MATCHLINE STA. A 582+25 SEE NEXT SHEET

MATCHLINE STA. A 576+50 SEE PREVIOUS SHEET



MILLED RUMBLE STRIPS
STA. A 582+25 - STA. A 587+75 CTR

STEEL BEAM GUARDRAIL, GALVANIZED
STA. A 583+52.5 - STA. A 583+90 LT

ANCHOR FOR STEEL BEAM GUARDRAIL
AS SHOWN - 1
(SEE STD G1-D) **A 583+90 LT**

REMOVE AND RESET GUARDRAIL
STA. A 582+25 - STA. A 583+52.5 LT

REPLACE GUARDRAIL POST ASSEMBLY
SEE ITEM DETAIL SHEETS

REPLACE GUARDRAIL BEAM UNIT
SEE ITEM DETAIL SHEETS

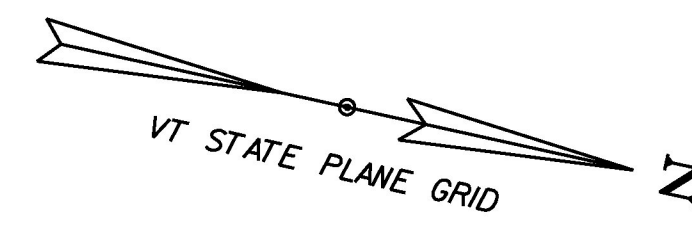
REMOVAL AND DISPOSAL OF GUARDRAIL
STA. A 583+52.5 - STA. A 583+90 LT

DURABLE 4 INCH WHITE LINE, (SEE OPTION ITEMS) &
TEMPORARY 4 INCH WHITE LINE, PAINT

(ALL LINES WILL INCLUDE EDGE LINE BREAKS AND
RADII FOR SIDE ROADS)
STA. A 582+25 - STA. A 587+75 (SOLID LT & RT)

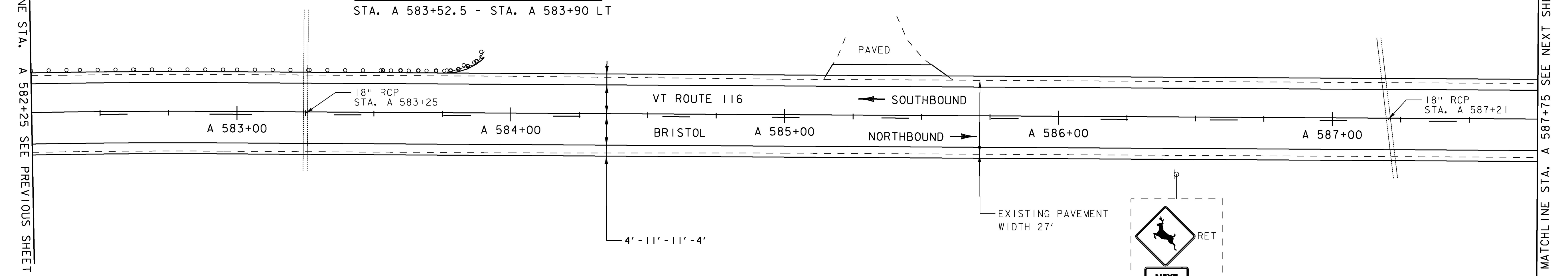
DURABLE 4 INCH YELLOW LINE, (SEE OPTION ITEMS) &
TEMPORARY 4 INCH YELLOW LINE, PAINT

(ALL LINES WILL INCLUDE CENTERLINE BREAKS FOR SIDE ROADS)
STA. A 582+25 - STA. A 587+75 (SOLID LT, DASHED RT)

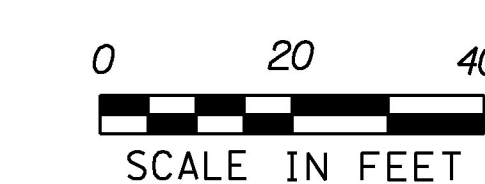
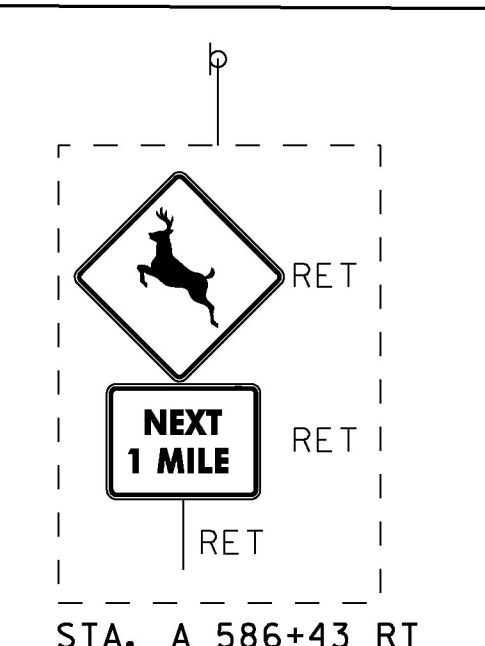


MATCHLINE STA. A 587+75 SEE NEXT SHEET

MATCHLINE STA. A 582+25 SEE PREVIOUS SHEET



SIGN LEGEND
R = REMOVE
R&S = REMOVE AND SALVAGE
RET = RETAIN
S = SALVAGED
N = NEW
B-B = BACK TO BACK
- - = EXISTING
— = NEW



PROJECT NAME: MIDDLEBURY-STARKSBORO	PLOT DATE: 5/4/2017
PROJECT NUMBER: STP 2953(I)	DRAWN BY: J. GOODALL
FILE NAME: z14V227bdr.dgn	CHECKED BY: C.LATHROP
DESIGNED BY: J. GOODALL	SHEET 110 OF 186
PLAN SHEET 84	