

REPLACE GUARDRAIL POST ASSEMBLY
SEE ITEM DETAIL SHEETS

REPLACE GUARDRAIL BEAM UNIT
SEE ITEM DETAIL SHEETS

ADJUST HEIGHT OF GUARDRAIL
SEE ITEM DETAIL SHEETS

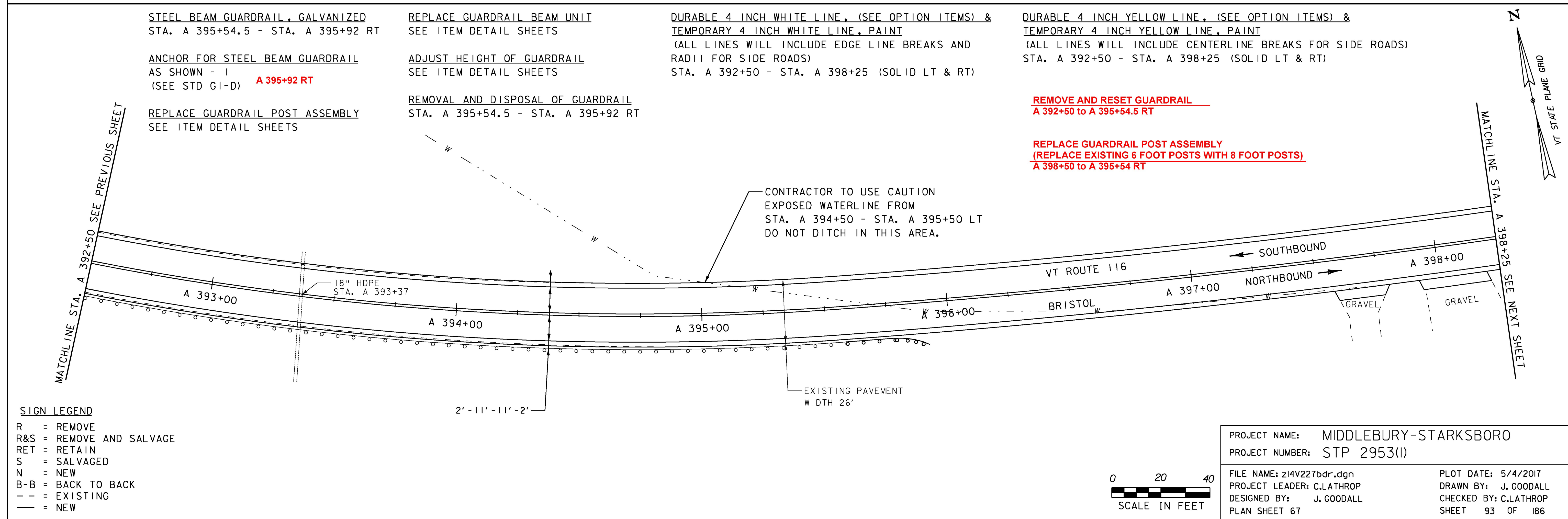
DURABLE 4 INCH WHITE LINE, (SEE OPTION ITEMS) &
TEMPORARY 4 INCH WHITE LINE, PAINT
(ALL LINES WILL INCLUDE EDGE LINE BREAKS AND
RADI FOR SIDE ROADS)
STA. A 386+75 - STA. A 392+50 (SOLID LT & RT)

DURABLE 4 INCH YELLOW LINE, (SEE OPTION ITEMS) &
TEMPORARY 4 INCH YELLOW LINE, PAINT
(ALL LINES WILL INCLUDE CENTERLINE BREAKS FOR SIDE ROADS)
STA. A 386+75 - STA. A 392+50 (SOLID LT & RT)

REMOVE AND RESET GUARDRAIL
A 386+75 to A 388+12.5 RT
A 388+12.5 to A 392+50 RT

STONE FILL, TYPE 1
A 386+97 to A 387+42 RT
A 387+68 to A 387+87 RT
A 390+90 to A 391+22 RT

REPLACE GUARDRAIL POST ASSEMBLY
(REPLACE EXISTING 6 FOOT POSTS WITH 8 FOOT POSTS)
A 386+75 to A 392+50 RT



STEEL BEAM GUARDRAIL, GALVANIZED
STA. A 395+54.5 - STA. A 395+92 RT

ANCHOR FOR STEEL BEAM GUARDRAIL
AS SHOWN - I
(SEE STD G1-D) **A 395+92 RT**

REPLACE GUARDRAIL POST ASSEMBLY
SEE ITEM DETAIL SHEETS

REPLACE GUARDRAIL BEAM UNIT
SEE ITEM DETAIL SHEETS

ADJUST HEIGHT OF GUARDRAIL
SEE ITEM DETAIL SHEETS

REMOVAL AND DISPOSAL OF GUARDRAIL
STA. A 395+54.5 - STA. A 395+92 RT

DURABLE 4 INCH WHITE LINE, (SEE OPTION ITEMS) &
TEMPORARY 4 INCH WHITE LINE, PAINT
(ALL LINES WILL INCLUDE EDGE LINE BREAKS AND
RADI FOR SIDE ROADS)
STA. A 392+50 - STA. A 398+25 (SOLID LT & RT)

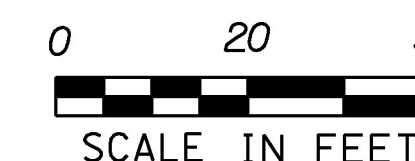
DURABLE 4 INCH YELLOW LINE, (SEE OPTION ITEMS) &
TEMPORARY 4 INCH YELLOW LINE, PAINT
(ALL LINES WILL INCLUDE CENTERLINE BREAKS FOR SIDE ROADS)
STA. A 392+50 - STA. A 398+25 (SOLID LT & RT)

REMOVE AND RESET GUARDRAIL
A 392+50 to A 395+54.5 RT

REPLACE GUARDRAIL POST ASSEMBLY
(REPLACE EXISTING 6 FOOT POSTS WITH 8 FOOT POSTS)
A 398+50 to A 395+54 RT

CONTRACTOR TO USE CAUTION
EXPOSED WATERLINE FROM
STA. A 394+50 - STA. A 395+50 LT
DO NOT DITCH IN THIS AREA.

- SIGN LEGEND**
- R = REMOVE
 - R&S = REMOVE AND SALVAGE
 - RET = RETAIN
 - S = SALVAGED
 - N = NEW
 - B-B = BACK TO BACK
 - - = EXISTING
 - = NEW



PROJECT NAME: MIDDLEBURY-STARKSBORO
PROJECT NUMBER: STP 2953(I)

FILE NAME: z14v227bdr.dgn
PROJECT LEADER: C.LATHROP
DESIGNED BY: J. GOODALL
PLAN SHEET 67

PLOT DATE: 5/4/2017
DRAWN BY: J. GOODALL
CHECKED BY: C.LATHROP
SHEET 93 OF 186