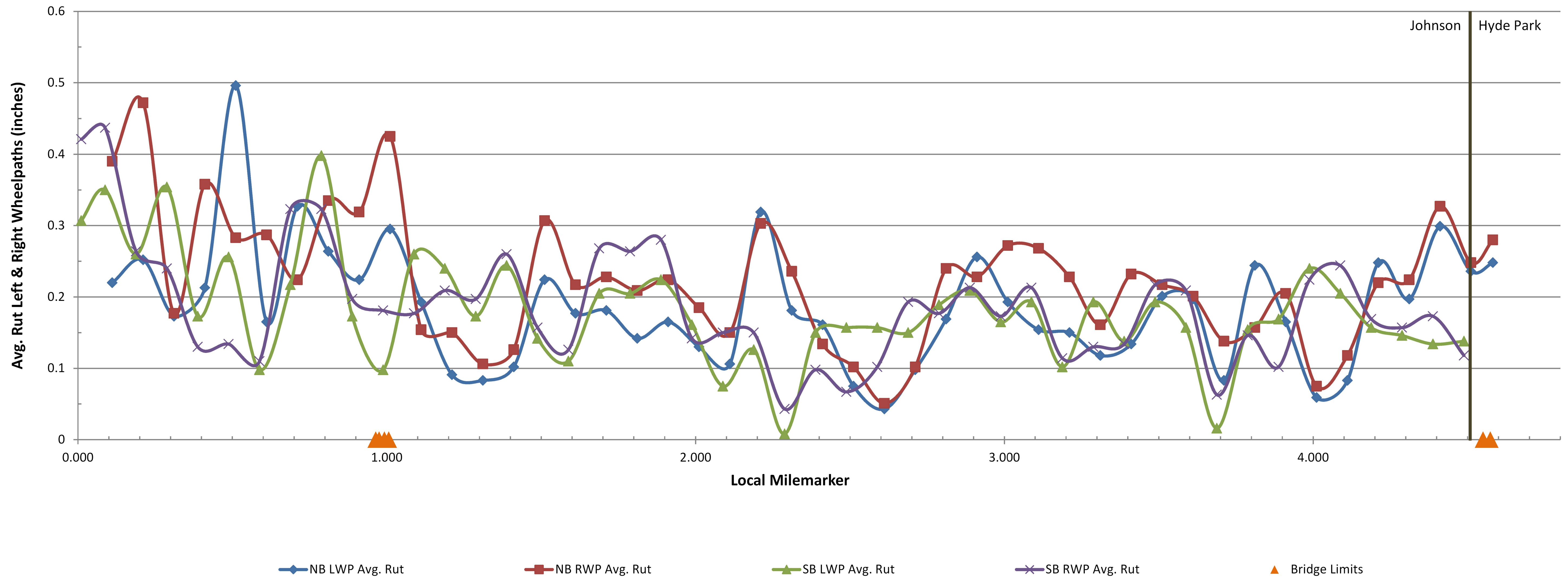


VT 100C Johnson-Hyde Park STP SURF(52) PreCon Ruts
 Profiled 10/1/2015



FOR INFORMATIONAL PURPOSES ONLY

| | |
|--|------------------------|
| PROJECT NAME: | JOHNSON - HYDE PARK |
| PROJECT NUMBER: | STP SURF(52) |
| FILE NAME: I4v204\pl4v204.dgn\pl4v204_21.i | PLOT DATE: 04-NOV-2015 |
| PROJECT LEADER: M. FOWLER | DRAWN BY: K. LOCKE |
| DESIGNED BY: K. LOCKE | CHECKED BY: M. FOWLER |
| RUTTING DATA INFORMATION SHEET | SHEET 21 OF 45 |