

**CHANGING ELEVATION OF DROP INLETS,
CATCH BASINS, OR MANHOLES**

WILMINGTON:
MM 3.569 RT
MM 3.582 RT
MM 3.846 RT

CHANGING ELEVATION OF SEWER MANHOLES

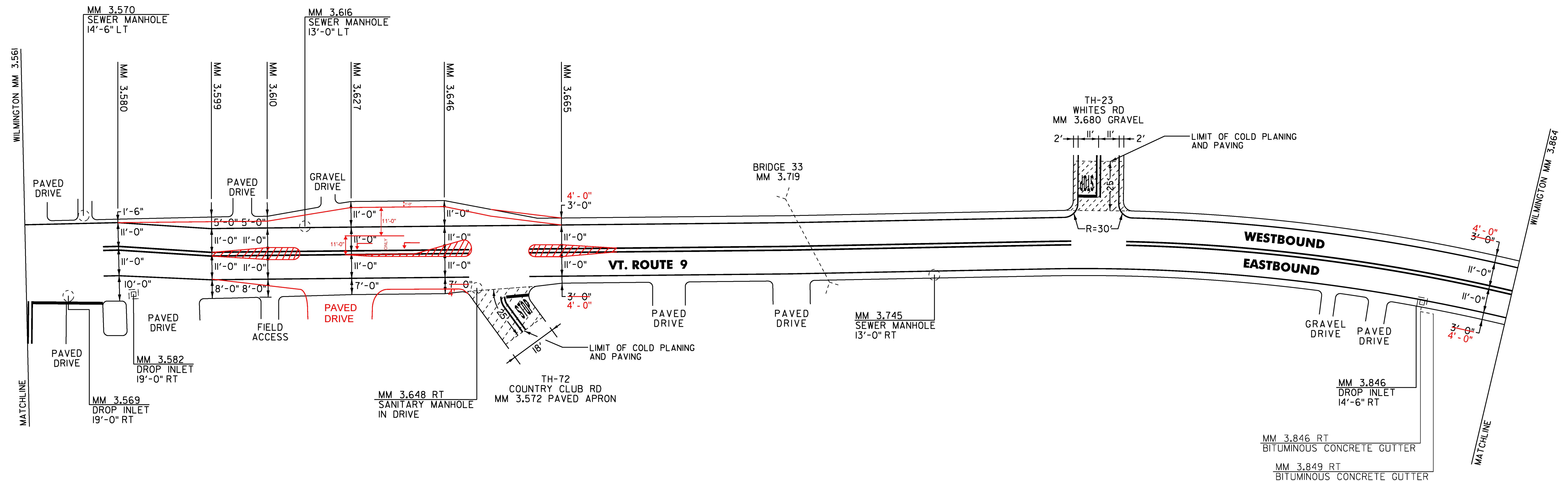
WILMINGTON:
MM 3.570 LT
MM 3.616 LT
MM 3.648 RT
MM 3.745 RT

TEMPORARY 4 INCH WHITE LINE, PAINT &
DURABLE 4 INCH WHITE LINE (OPTION BID ITEM)
(ALL LINES WILL INCLUDE EDGE LINE BREAKS AND
RADIUS FOR TOWN HIGHWAYS)
WILMINGTON:
MM 3.561 - 3.864 EDGE LINE LT & RT
MM 3.562 RT DRIVE

TEMPORARY 4 INCH YELLOW LINE, PAINT &
DURABLE 4 INCH YELLOW LINE (OPTION BID ITEM)
(ALL LINES WILL INCLUDE C/L BREAKS FOR
TOWN HIGHWAYS)
WILMINGTON:
MM 3.561 - 3.864 C/L SOLD LT & RT
MM 3.562 RT DRIVE
MM 3.680 DOUBLE SOLID LT TH-23

TEMPORARY 24 INCH STOP BAR, PAINT &
DURABLE 24 INCH STOP BAR (OPTION BID ITEM)
WILMINGTON:
MM 3.562 RT DRIVE
MM 3.679 LT TH-23

TEMPORARY LETTER OR SYMBOL, PAINT &
DURABLE LETTER OR SYMBOL (OPTION BID ITEM)
WILMINGTON:
MM 3.679 LT - "STOP" (4 EACH)
MM 3.572 RT - "STOP" (4 EACH)



NOT TO SCALE

PROJECT NAME:	BENNINGTON-WILMINGTON
PROJECT NUMBER:	NH SURF (51)
FILE NAME:	p14v201Bennington-Wilmington.dg
PROJECT LEADER:	M. FOWLER
DESIGNED BY:	N. PAPPAS
LAYOUT SHEET 21	
PLOT DATE:	28-MAR-2017
DRAWN BY:	N. PAPPAS
CHECKED BY:	M. FOWLER
SHEET	40 OF 64