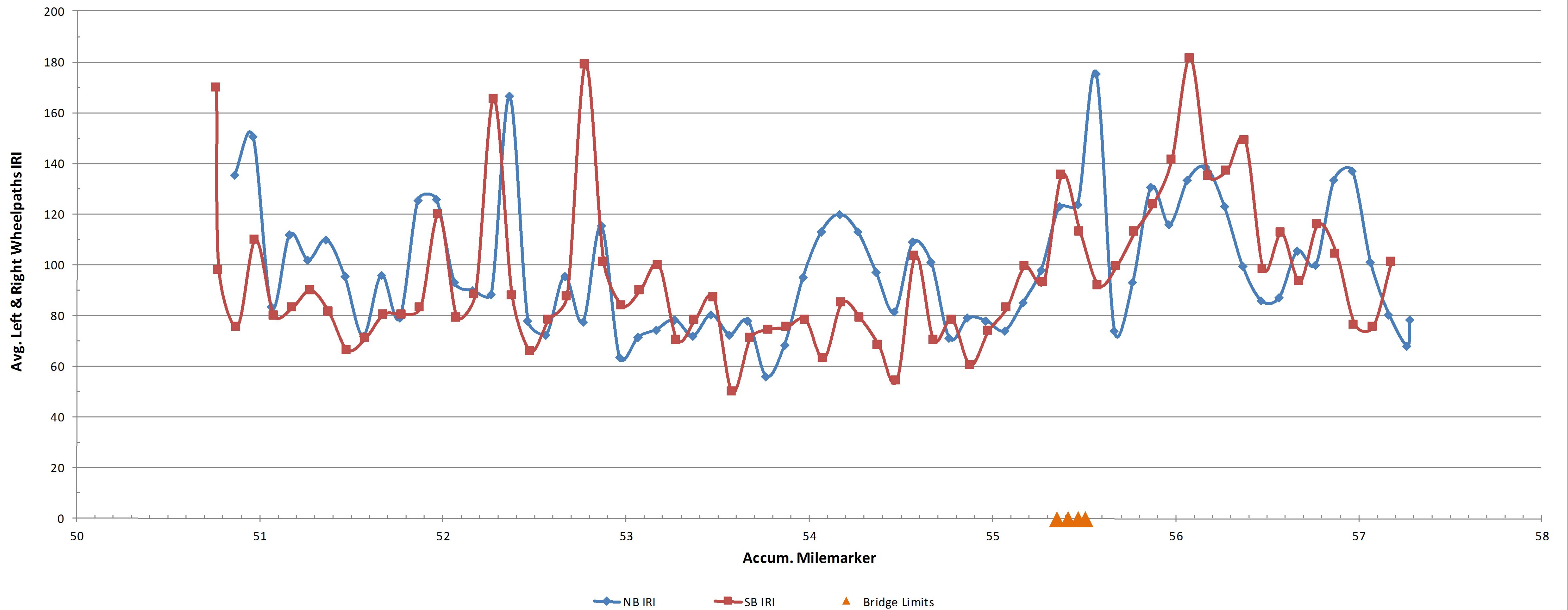


US 7 Wallingford (part of Manchester-Rutland) NH SURF(50) PreCon IRI

Profiled 12/2/2014

NB Avg. IRI = 98.5 SB Avg. IRI = 95.4



PROJECT NAME:	MANCHESTER-RUTLAND TOWN
PROJECT NUMBER:	NH SURF(50)
FILE NAME: p14v200.dgn	PLOT DATE: 1/14/2016
PROJECT LEADER: M. FOWLER	DRAWN BY: B. KIPP
DESIGNED BY: B. KIPP	CHECKED BY: M. FOWLER
ROUGHNESS DATA INFORMATION SHEET 2	SHEET 103 OF 105