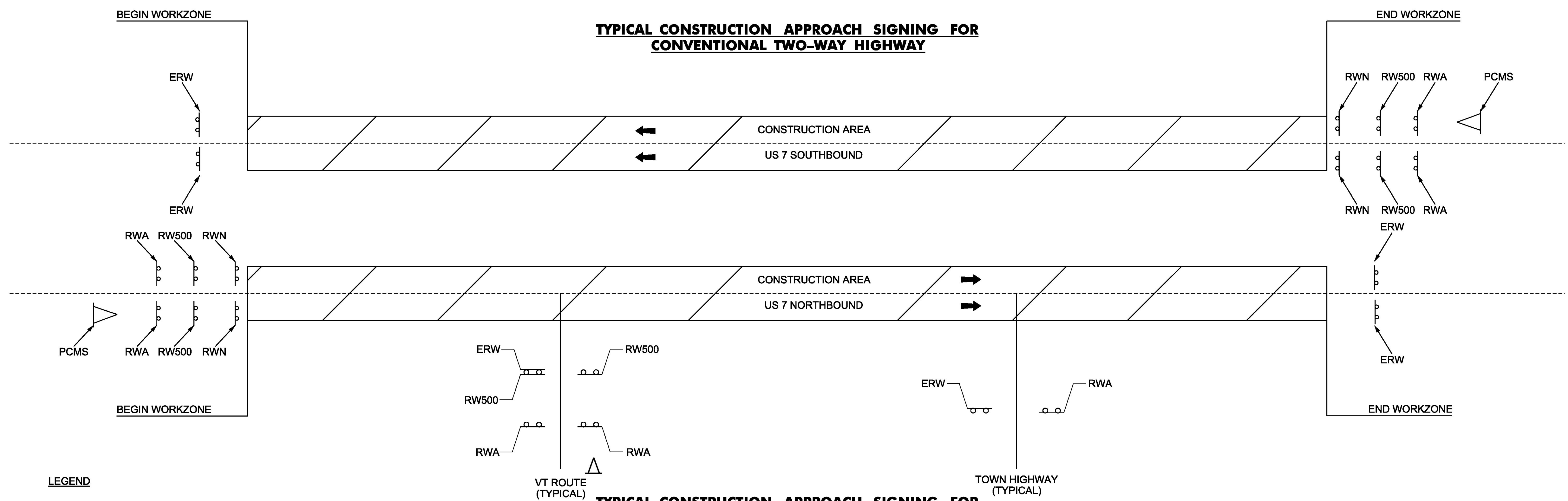


**TYPICAL CONSTRUCTION APPROACH SIGNING FOR  
CONVENTIONAL TWO-WAY HIGHWAY**



**TYPICAL CONSTRUCTION APPROACH SIGNING FOR  
LIMITED ACCESS HIGHWAY**

**LEGEND**

- RWA = ROAD WORK AHEAD
- RW500 = ROAD WORK IN 500 FEET
- RWN = ROAD WORK NEXT (XX MILES)
- ERW = END ROAD WORK
- SRWA = SIDE ROAD WORK AHEAD
- SRW500 = SIDE ROAD WORK 500 FEET
- △ = PORTABLE CHANGEABLE MESSAGE SIGN
- [Hatched Box] = WORK AREA
- ← = DIRECTION OF TRAFFIC FLOW

**NOTE:**  
SEE VAOT STANDARDS T-1, T-10, T-11 AND T-13 FOR SIGN PLACEMENT.  
CONSTRUCTION APPROACH SIGNING SHALL BE PLACED AS NOT TO INTERFERE WITH EXISTING TRAFFIC CONTROL DEVICES.  
SEE TRAFFIC CONTROL NOTES SHEET.

PROJECT NAME:	MANCHESTER-RUTLAND TOWN
PROJECT NUMBER:	NH SURF(50)
FILE NAME: cas sheet.dgn	PLOT DATE: 1/14/2016
PROJECT LEADER: M. FOWLER	DRAWN BY: B. KIPP
DESIGNED BY: B. KIPP	CHECKED BY: M. FOWLER
CONSTRUCTION APPROACH SIGNING SHEET	SHEET 97 OF 105